

Highway GIS Portal Project Locator

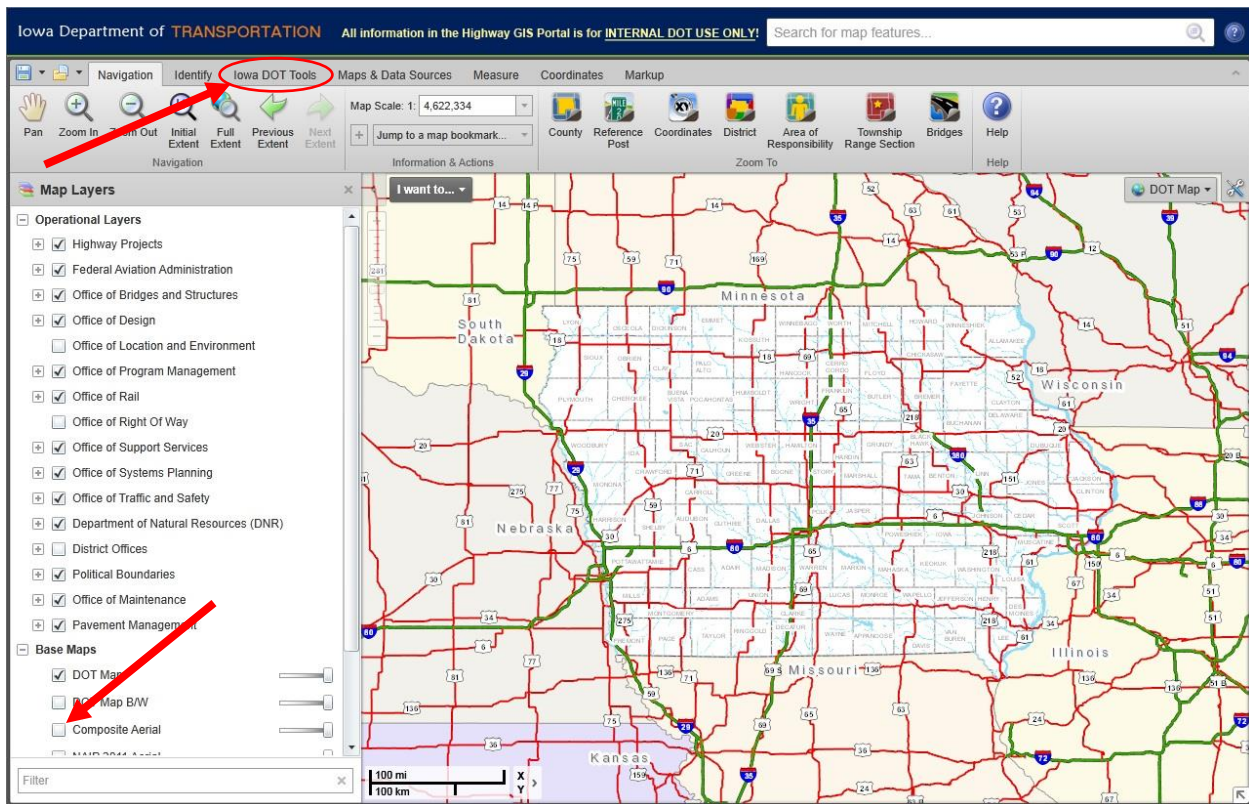
Design Manual
Chapter 20
Project Automation
Information

Originally Issued: 07-18-13
Revised: 06-25-19

The Project Locator tool is used to graphically store project locations coordinates that have not been set in Project Scheduling System (PSS). Only projects that do not currently have coordinates stored in PSS will be available to set coordinates using this tool. Coordinates can still be stored manually into PSS; however, this tool is to be used to help prevent errors in storing coordinates correctly. This tool is only accessible internally to Iowa Department of Transportation personnel.

Accessing Project Locator

First open the Highway GIS portal. To do this, open Internet Explorer and navigate to <https://egis.iowadot.gov/Html5Viewer/?viewer=dotportal>.

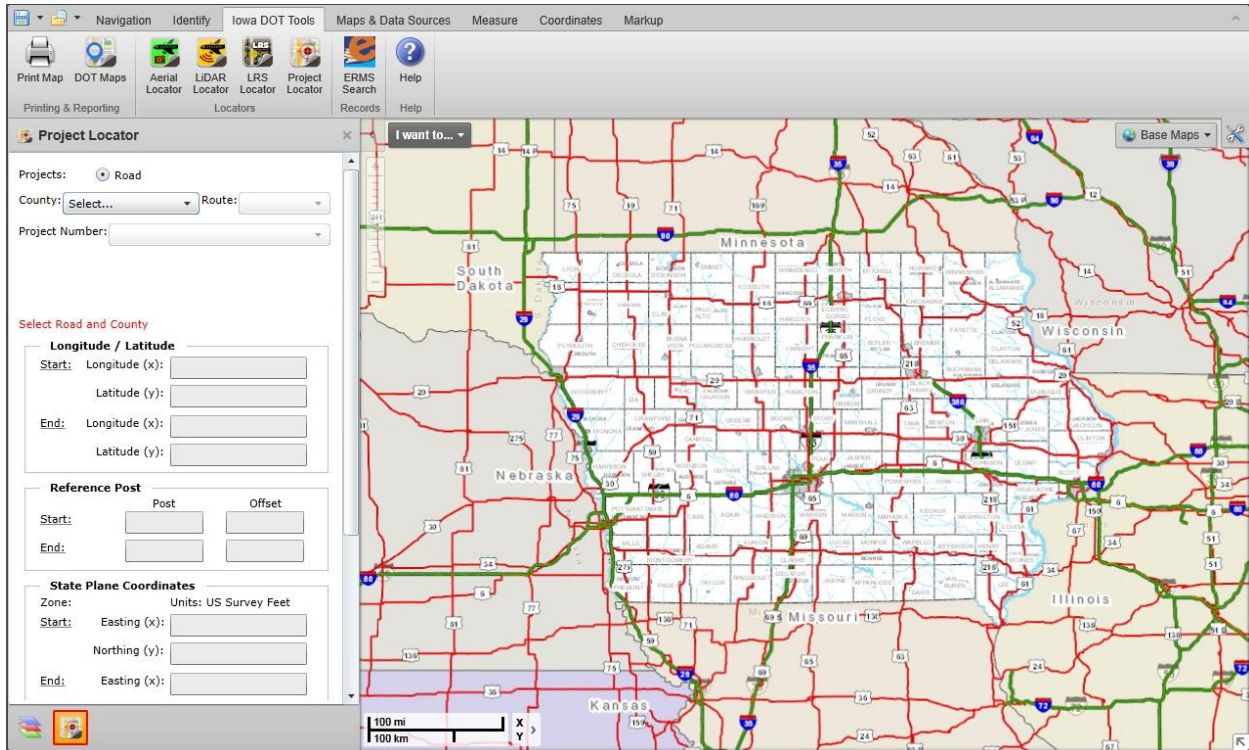


Above is the default view when the portal is first opened. By default, aerial photography is turned off. To turn on aerials, *click* on the check-box next to **Composite Aerial** as shown above.

To access the Project Locator tool, *click* on the **Iowa DOT Tools** navigation ribbon. *Click* on **Project Locator**.

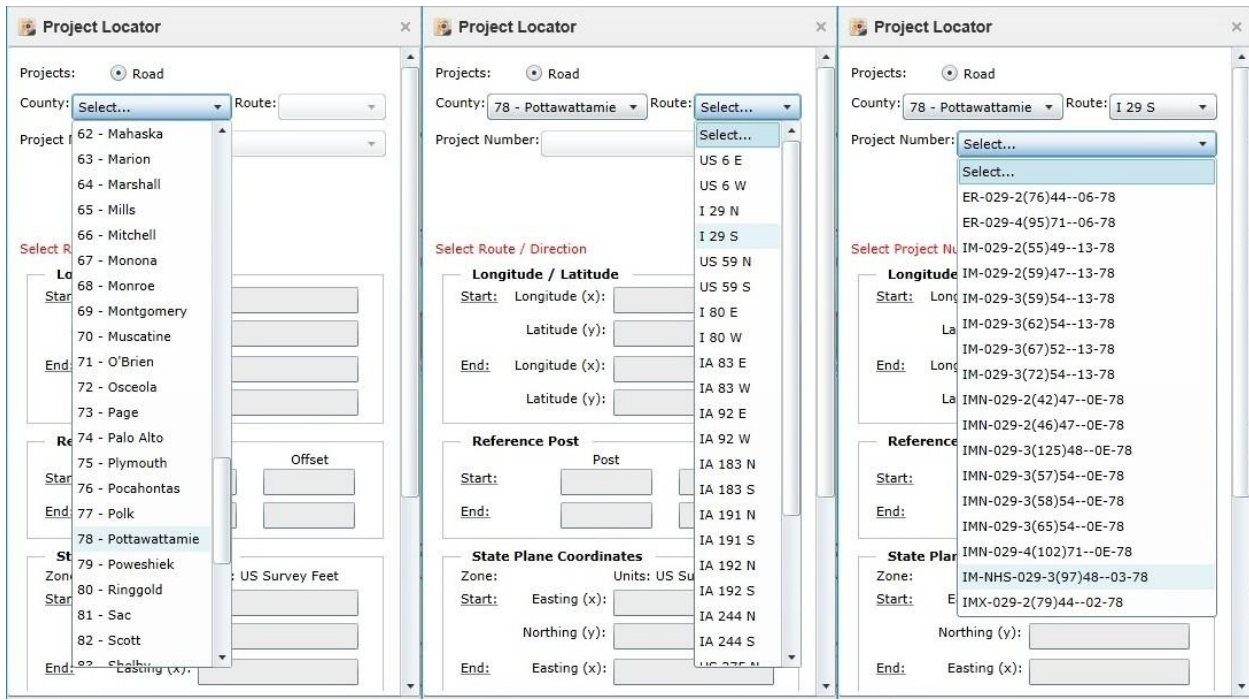


The following screen will appear:



Selecting Project Location and Number

Start begin by *clicking* on the dropdown box for **County**. Select the county with which the project is associated (see below). After selecting a county, the map will zoom into the extent of that county. Retrieving route data may take a little time, during which the Project Locator area will be temporarily grayed out. Continue on by *clicking* on the **Route** dropdown box and selecting the appropriate route (see below). When selecting the route for a project on a multilane road that is not exclusive to one direction, select the cardinal direction (meaning the eastbound or northbound lane). Finally, *click* on the **Project Number** dropdown box and select the project (see below).



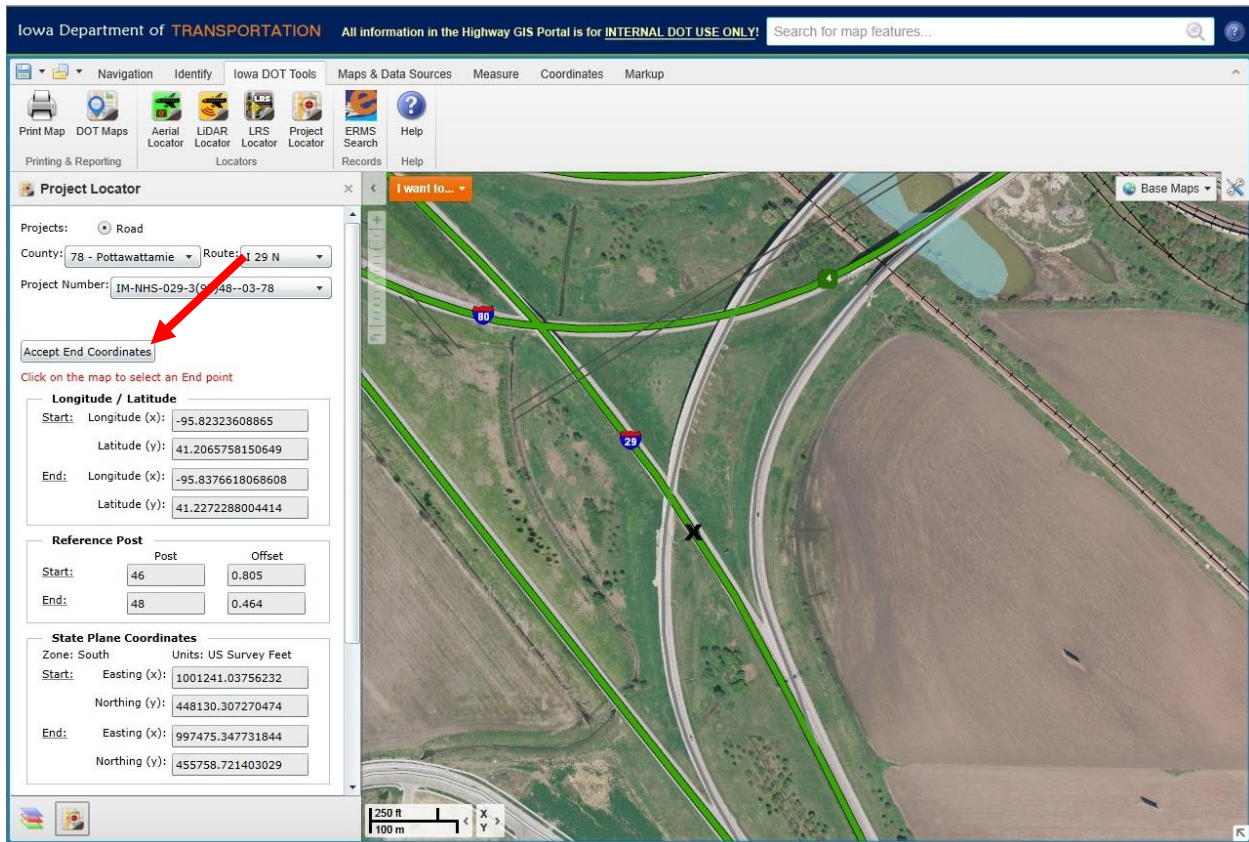
Note: If your project number is not displayed in the list coordinates, they have already been stored into PSS.

Inputting Project Coordinates

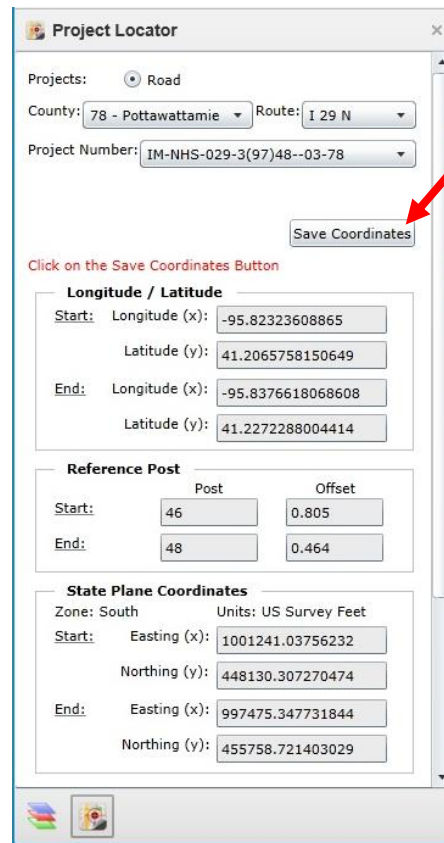
To input project coordinates, first select the starting coordinates of the project by navigating the map to the start location of the project. The map can be moved around by *clicking and dragging* and zooming in and out using the scroll wheel on your mouse or *clicking* on the + or – buttons in the top left corner of the map. To select the starting location, *click* on the map in the appropriate start location for your project. A black X will appear on the map in the location that was clicked. If the location is not correct, simply click again on the correct location to set the starting location coordinates. When the proper location has been selected and confirmed visually with the black X on the start location, *click* on **Accept Start Coordinates** as shown below.



Once starting coordinates have been input, project end coordinates are input. To do this, *click* on the end location. A black X will appear on the coordinates. Once the appropriate location is confirmed visually, *click* **Accept End Coordinates** as shown on the next page.



Once Start and End coordinates have been saved, both project coordinates can be saved into PSS by *clicking* on **Save Coordinates**. The completed a message will pop up as shown below indicating that the coordinates have been saved into PSS.



Chronology of Changes to Design Manual Section:

020J-071 Project Locator

6/25/2019	Revised Updated hyperlinks. Updated header logo and text.
7/18/2013	NEW NEW. Provides instructions for adding project coordinates to PSS using the GIS portal.