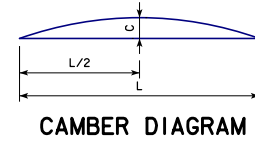
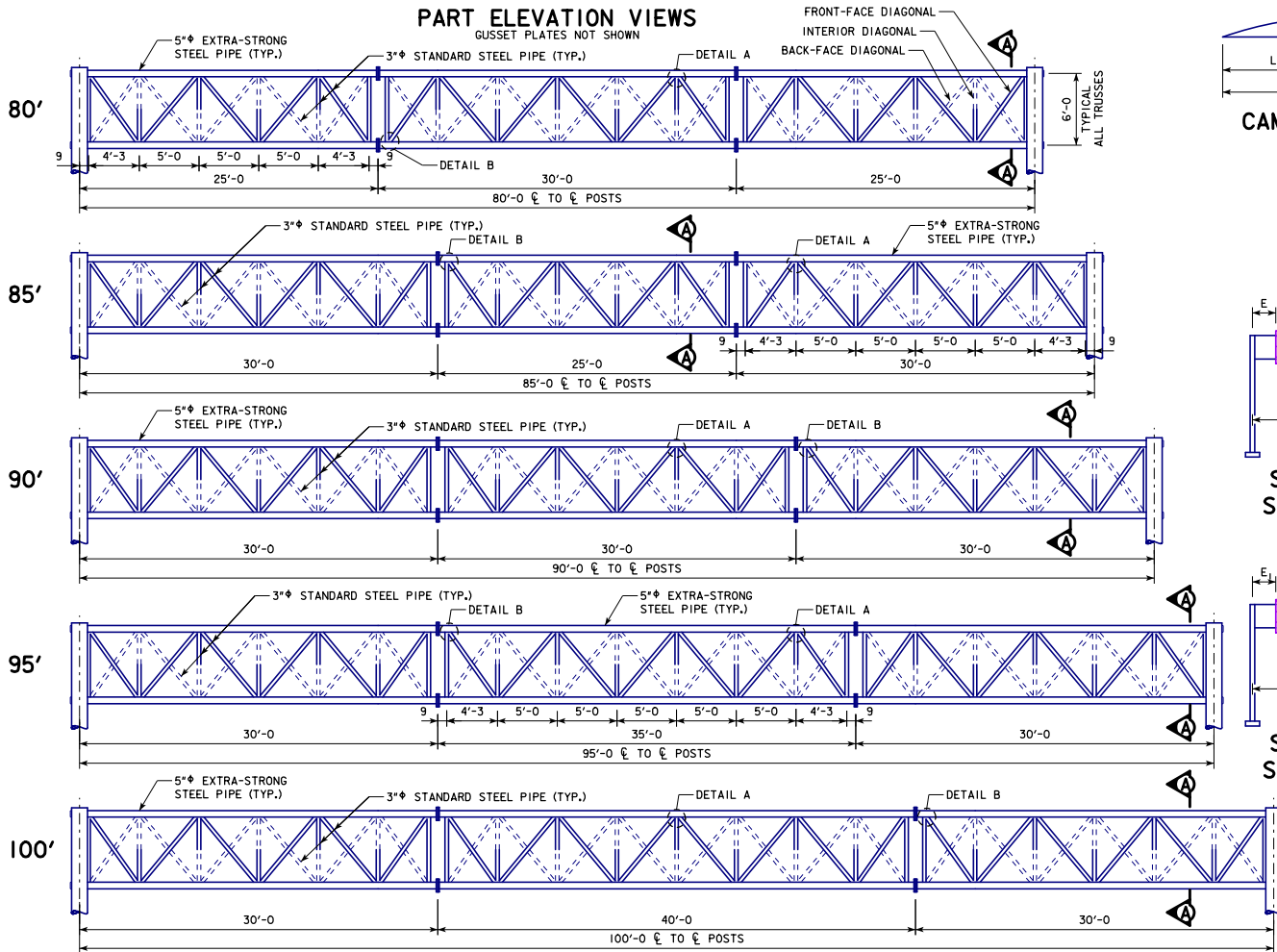


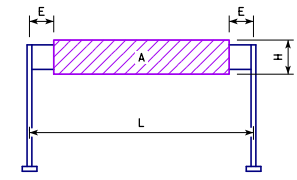
REVISION 07-2017: MODIFIED NOTES, CHANGED CALLOUT "SIMILAR TO DETAIL A" (WAS "DETAIL D") TO CONFORM TO CHANGE OF DETAIL D ON SOST-08-11. REFERENCE TO DETAIL D WAS REMOVED FROM THIS STANDARD SHEET.
 REVISION 03-2019: UPDATED BRIDGE ENGINEER SIGNATURE.
 STEEL OVERHEADS (TRUSS).DGN - SOST-03-11 - THIS SHEET ISSUED 09-2011.

PART ELEVATION VIEWS

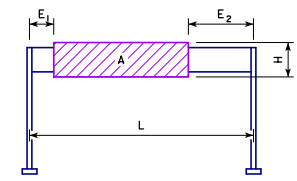


| SPAN L | CAMBER C |
|--------|----------|
| 80' | 1 3/4" |
| 85' | 1 1/2" |
| 90' | 1 3/4" |
| 95' | 1 1/2" |
| 100' | 2 1/4" |

BACK-FACE DIAGONALS AND BOTTOM-FACE DIAGONALS ARE SHOWN WITH DASHED LINES. INTERIOR DIAGONALS ARE SHOWN SOLID NEAR THE FRONT FACE AND TOP FACE. INTERIOR DIAGONALS ARE SHOWN DASHED TOWARDS THE BACK FACE AND BOTTOM FACE.



SIGN AREA FOR STEEL OVERHEAD SIGN TRUSS
CENTERED



SIGN AREA FOR STEEL OVERHEAD SIGN TRUSS
OFFSET

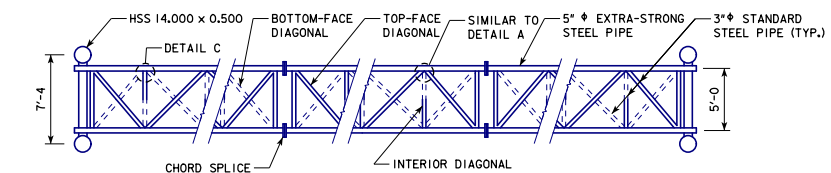
SIGN OFFSET MAY BE MIRRORED (E1 AND E2 VALUES REVERSED).

ALLOWABLE SIGN AREA

| CENTERED | | | | |
|----------|------------------|----------------|--|----------------|
| SPAN | MAX. SIGN HEIGHT | MIN. END DIST. | | MAX. SIGN AREA |
| L | H | E | | A |
| 80' | 19'-0" | 15'-0" | | 950 S.F. |
| 85' | 19'-0" | 17'-6" | | 950 S.F. |
| 90' | 19'-0" | 20'-0" | | 950 S.F. |
| 95' | 19'-0" | 22'-6" | | 950 S.F. |
| 100' | 19'-0" | 25'-0" | | 950 S.F. |
| 80' | 14'-9" | 8'-0" | | 944 S.F. |
| 85' | 14'-9" | 10'-6" | | 944 S.F. |
| 90' | 14'-9" | 13'-0" | | 944 S.F. |
| 95' | 14'-9" | 15'-6" | | 944 S.F. |
| 100' | 14'-9" | 18'-0" | | 944 S.F. |
| 85' | 12'-0" | 5'-0" | | 900 S.F. |
| 90' | 12'-0" | 5'-6" | | 948 S.F. |
| 95' | 12'-0" | 8'-0" | | 948 S.F. |
| 100' | 12'-0" | 10'-6" | | 948 S.F. |

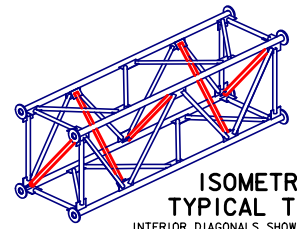
| OFFSET | | | | |
|--------|------------------|---------------------|----------------------|----------------|
| SPAN | MAX. SIGN HEIGHT | MIN. LEFT END DIST. | MIN. RIGHT END DIST. | MAX. SIGN AREA |
| L | H | E1 | E2 | A |
| 80' | 19'-0" | 10'-0" | 30'-0" | 760 S.F. |
| 85' | 19'-0" | 10'-0" | 38'-0" | 703 S.F. |
| 90' | 19'-0" | 10'-0" | 44'-0" | 684 S.F. |
| 95' | 19'-0" | 10'-0" | 50'-0" | 665 S.F. |
| 100' | 19'-0" | 10'-0" | 56'-0" | 646 S.F. |
| 85' | 14'-9" | 10'-0" | 13'-0" | 915 S.F. |
| 90' | 14'-9" | 10'-0" | 25'-0" | 811 S.F. |
| 95' | 14'-9" | 10'-0" | 34'-0" | 752 S.F. |
| 100' | 14'-9" | 10'-0" | 41'-0" | 723 S.F. |
| 100' | 12'-0" | 10'-0" | 14'-0" | 912 S.F. |

SEE STANDARD SHEET SOST-08-11 FOR SECTION A-A AND DETAILS A, B AND C.



PART TOP VIEW

INTERIOR DIAGONALS HAVE SAME ORIENTATION AT CHORD SPLICE LOCATIONS



ISOMETRIC VIEW TYPICAL TRUSS UNIT

INTERIOR DIAGONALS SHOWN IN RED FOR CLARITY

03-2019
LATEST REVISION DATE
[Signature]
APPROVED BY BRIDGE ENGINEER



STANDARD DESIGN

STEEL OVERHEAD SIGN TRUSS

SEPTEMBER, 2011

ELEVATION VIEWS FOR TRUSS SPANS 80'-100' SPANS

SOST-03-11