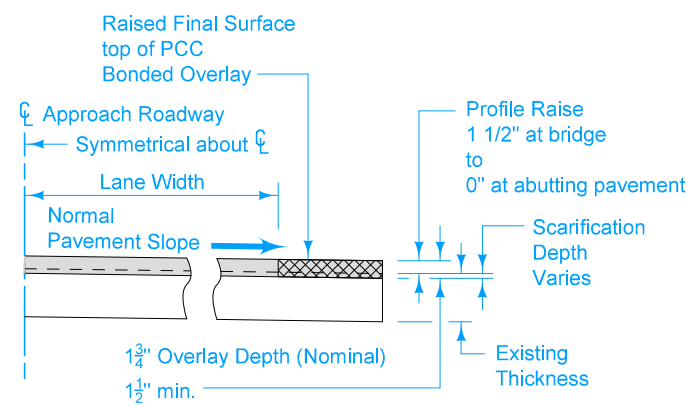
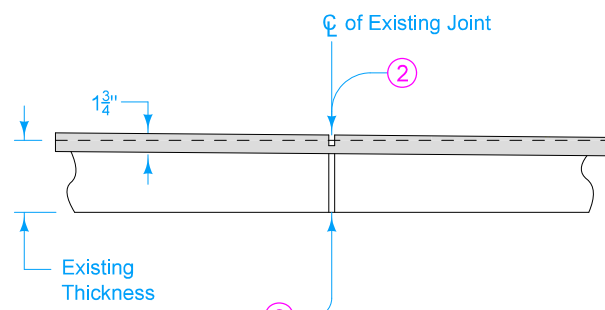


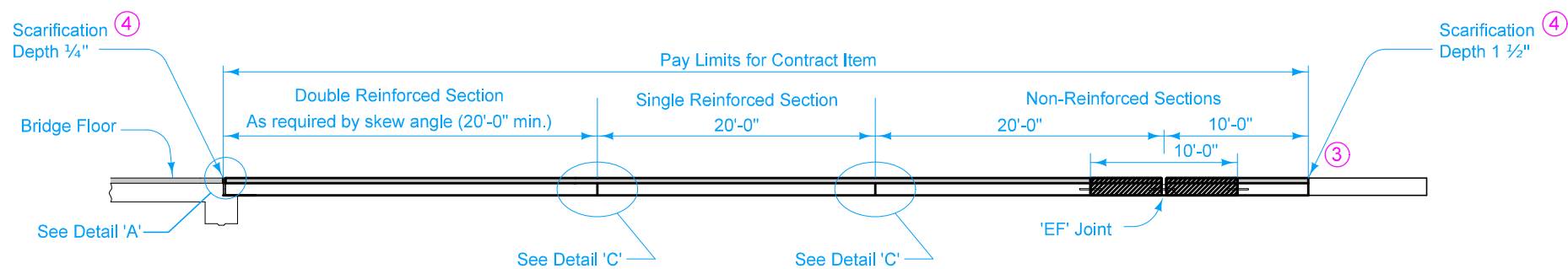
APPROACH PAVEMENT



SECTION A-A

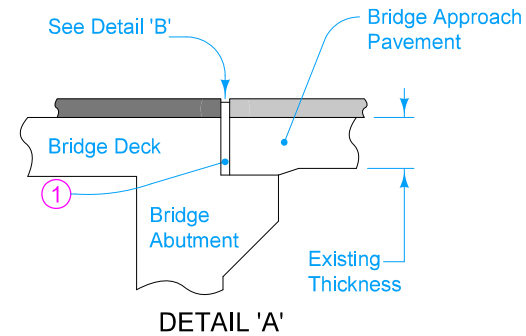


DETAIL 'C'

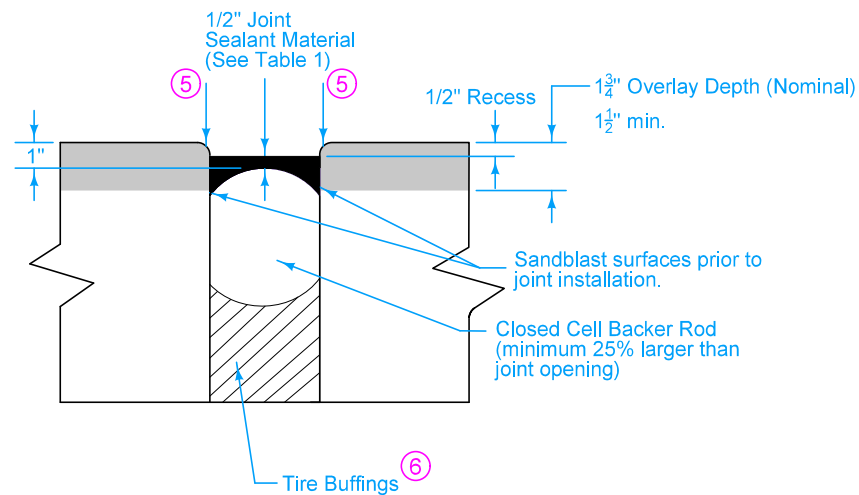


SECTION THRU CENTERLINE

- Possible full depth patch to replace EF joint (if present). To be done after overlay. Refer to PR-101
- Possible shoulder.



DETAIL 'A'



DETAIL 'B'

Table 1	
Approved List of Sealant	
Dow - Dowsil 902 RCS	
Sika - Sikasil 728 RCS	
Watson Bowman Acme - Wabo SiliconeSeal	
Pecora - 322FC	

Remove all HMA within pay limits if present. Removal of previous HMA overlays will be incidental to "Deck Overlay" and will not be paid for separately. Full depth patch may be required to remove HMA, see project plans.

Overlaying of the bridge approach pavement with PCC will be paid for at the contract unit price for "Deck Overlay" according to Section 2413 of the Standard Specifications. Scarification to the depth required and joint sealing is incidental to "Deck Overlay".

This standard may be used with bridge overlays resulting in a profile change of up to 1.5 inches.

- ① Existing joint. Remove all expansion material and clean joint area. Do not overlay and saw cut.
- ② Saw and seal over existing joint. Refer to Detail 'C' on PV-101.
- ③ Existing joint. Remove debris and clean joint prior to overlay.
- ④ Depth of scarification shall transition evenly between ends of bridge approach.
- ⑤ Edge with 1/4 inch tool for length of joint indicated if formed; edging not required when cut with diamond blade saw.
- ⑥ Tire buffings required when joint is 2 inches or greater. Compact tire buffings by spading with a square-nose shovel. Tire buffings shall not be larger than 1/2 inch.

 STANDARD ROAD PLAN	REVISION
	New 10-15-24
BR-110	
SHEET 1 of 1	

REVISIONS: New. Replaces BR-111.

APPROVED BY DESIGN METHODS ENGINEER

**PCC OVERLAY OF
BRIDGE APPROACH SECTION**