

LEGEND

- ▬ PROPOSED BRIDGE REPAIR
- ▬ PROPOSED DETOUR ROUTE
- - - TEMPORARY ROAD CLOSURE

N
0 100 200
FEET

Photo taken in 2009

PUBLIC INFORMATION MEETING
 March 6, 2014
IA Highway 415 over Saylorville Lake
Mile Long Bridge Repairs
 Project Number: BRFN-415-1(43)--39-77

MILE LONG BRIDGE

Polk City

Saylorville Lake

City of Ankeny

City of Johnston

NW 66TH AVENUE

NW 26TH STREET

NW BEAVER DRIVE

NW BEAVER DRIVE

NW BEAVER DRIVE

NW BEAVER DRIVE

415

415

415

415

415

415

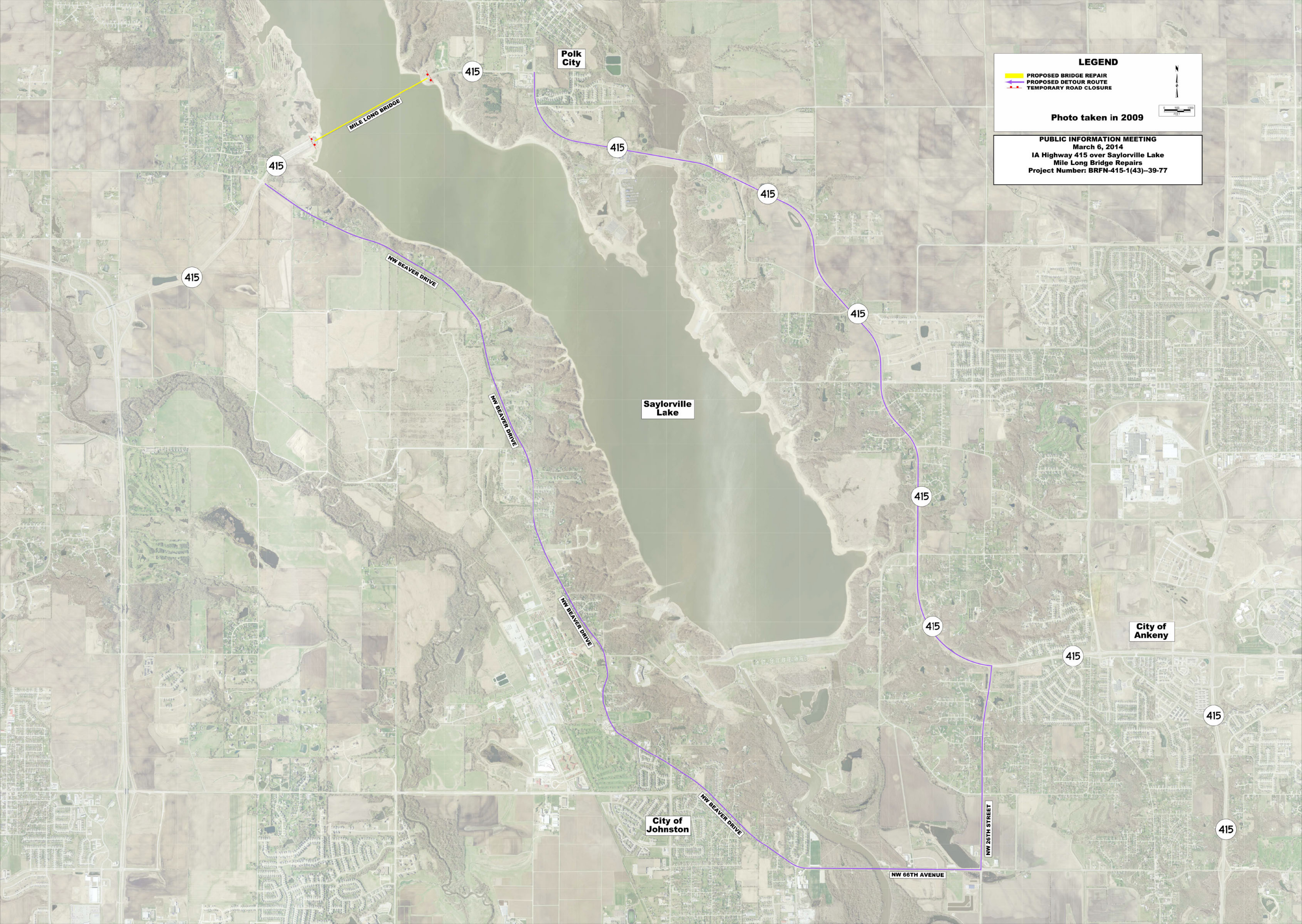
415

415

415

415

415



LEGEND

- ▬ PROPOSED BRIDGE REPAIR
- ▬ PROPOSED DETOUR ROUTE
- - - TEMPORARY ROAD CLOSURE

N
0 100 200
FEET

Photo taken in 2009

PUBLIC INFORMATION MEETING
 March 6, 2014
IA Highway 415 over Saylorville Lake
Mile Long Bridge Repairs
 Project Number: BRFN-415-1(43)--39-77

Polk City

Saylorville Lake

City of Johnston

City of Ankeny

MILE LONG BRIDGE

NW BEAVER DRIVE

NW BEAVER DRIVE

NW BEAVER DRIVE

NW BEAVER DRIVE

NW 66TH AVENUE

NW 26TH STREET

415

415

415

415

415

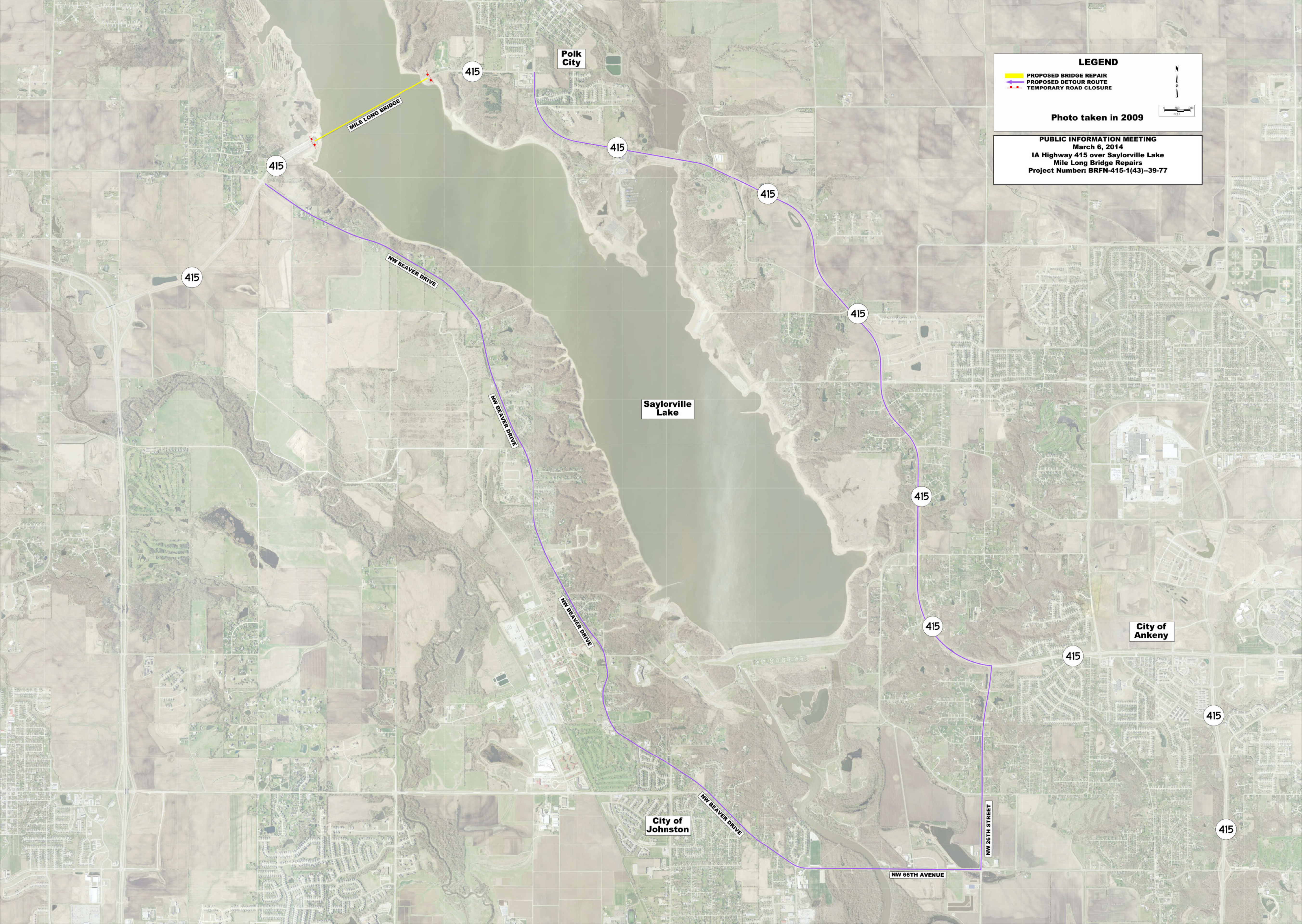
415

415

415

415

415



LEGEND

- █ PROPOSED BRIDGE REPAIR
- █ PROPOSED DETOUR ROUTE
- - - TEMPORARY ROAD CLOSURE

N
0 100 200
FEET

Photo taken in 2009

PUBLIC INFORMATION MEETING
 March 6, 2014
IA Highway 415 over Saylorville Lake
Mile Long Bridge Repairs
 Project Number: BRFN-415-1(43)--39-77

MILE LONG BRIDGE

Polk City

Saylorville Lake

City of Ankeny

City of Johnston

NW BEAVER DRIVE

NW BEAVER DRIVE

NW BEAVER DRIVE

NW BEAVER DRIVE

NW 66TH AVENUE

NW 26TH STREET

415

415

415

415

415

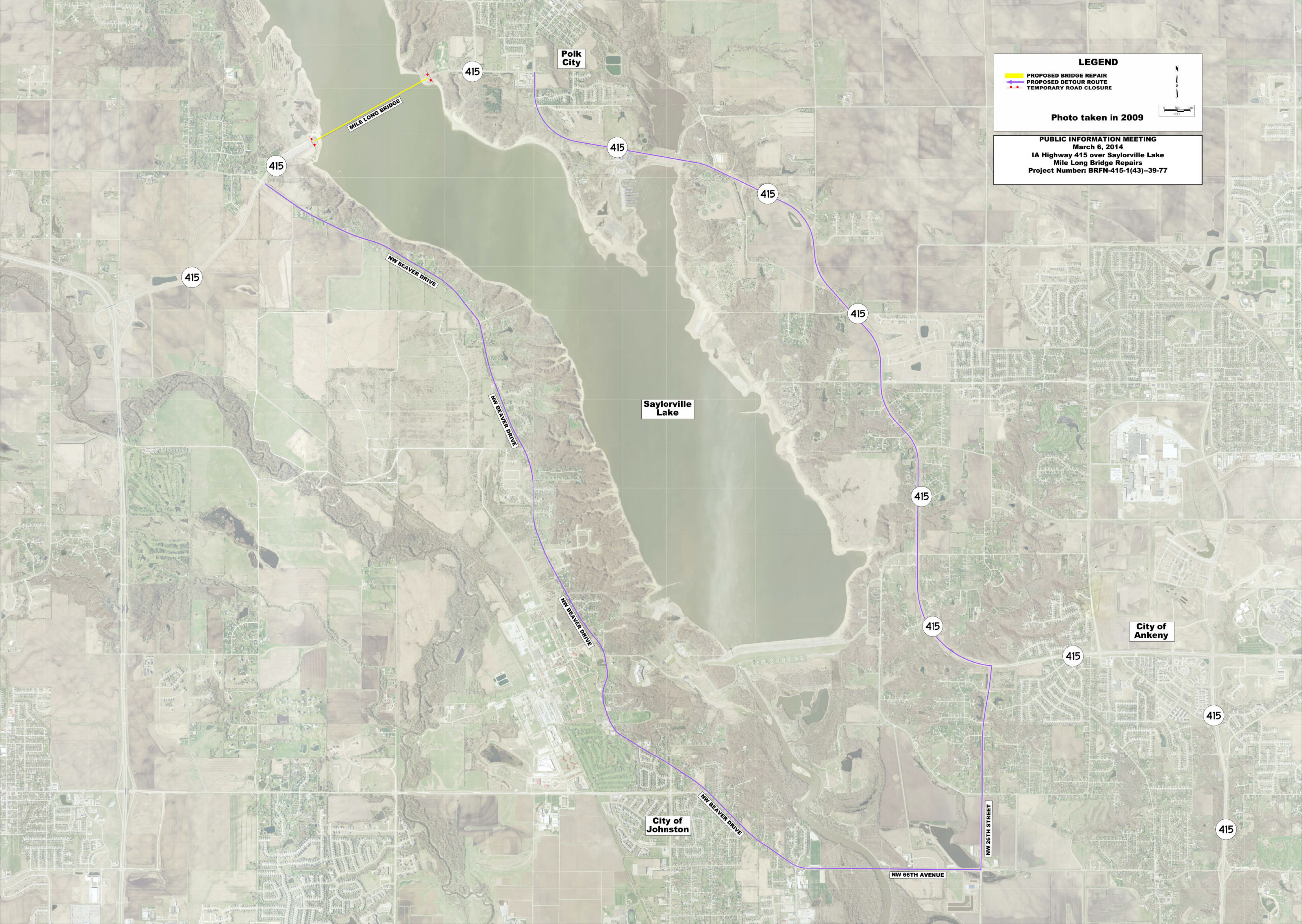
415

415

415

415

415



LEGEND

- ▬ PROPOSED BRIDGE REPAIR
- ▬ PROPOSED DETOUR ROUTE
- - - TEMPORARY ROAD CLOSURE



Photo taken in 2009

PUBLIC INFORMATION MEETING
 March 6, 2014
 IA Highway 415 over Saylorville Lake
 Mile Long Bridge Repairs
 Project Number: BRFN-415-1(43)--39-77

Polk City

Saylorville Lake

City of Johnston

City of Ankeny

MILE LONG BRIDGE

NW BEAVER DRIVE

NW BEAVER DRIVE

NW BEAVER DRIVE

NW BEAVER DRIVE

NW 66TH AVENUE

NW 26TH STREET

415

415

415

415

415

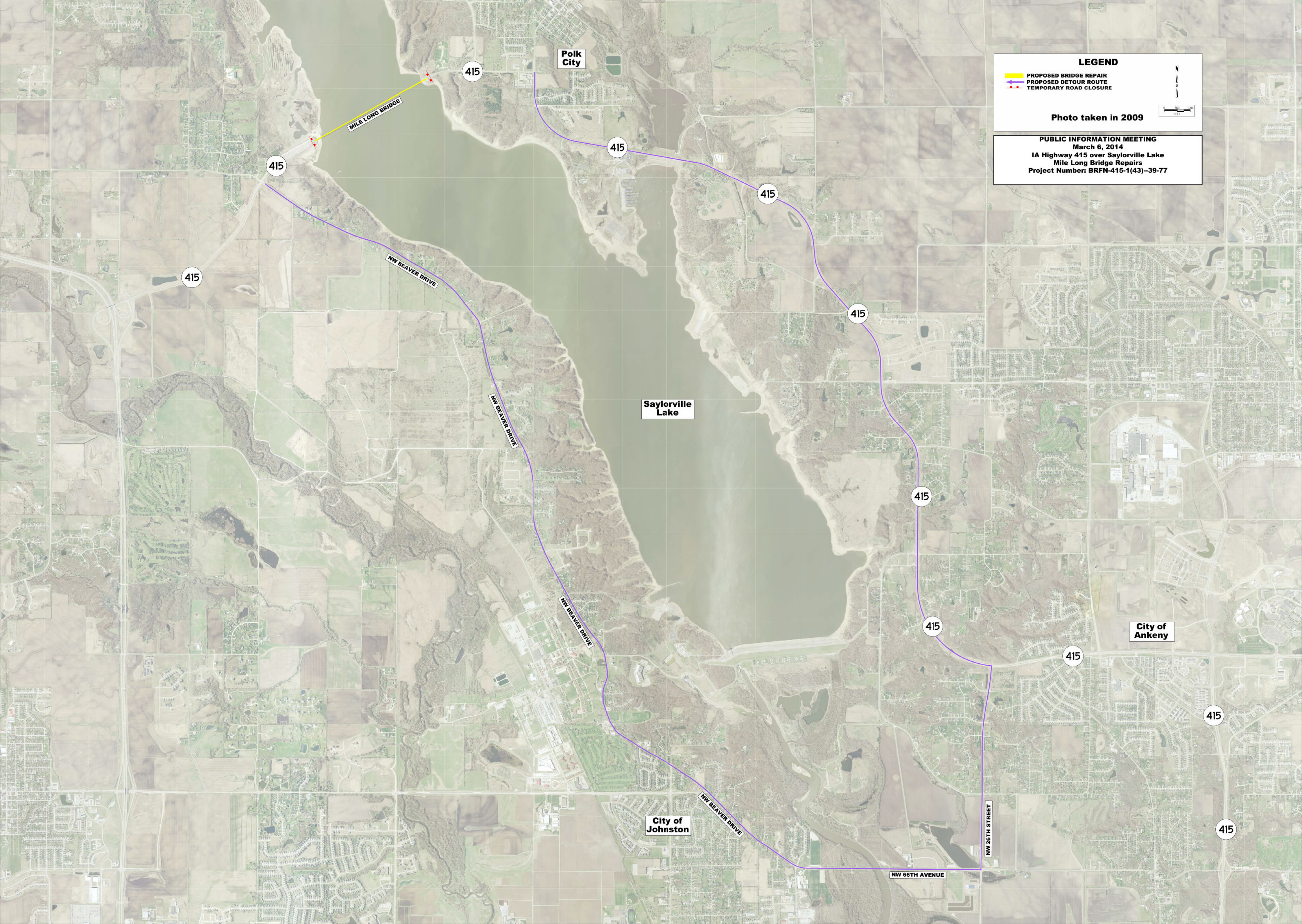
415

415

415

415

415



LEGEND

- ▬ PROPOSED BRIDGE REPAIR
- ▬ PROPOSED DETOUR ROUTE
- - - TEMPORARY ROAD CLOSURE



Photo taken in 2009

PUBLIC INFORMATION MEETING
 March 6, 2014
IA Highway 415 over Saylorville Lake
Mile Long Bridge Repairs
 Project Number: BRFN-415-1(43)--39-77

Polk City

Saylorville Lake

City of Ankeny

City of Johnston

MILE LONG BRIDGE

NW BEAVER DRIVE

NW BEAVER DRIVE

NW BEAVER DRIVE

NW BEAVER DRIVE

NW 66TH AVENUE

NW 26TH STREET

415

415

415

415

415

415

415

415

415

415