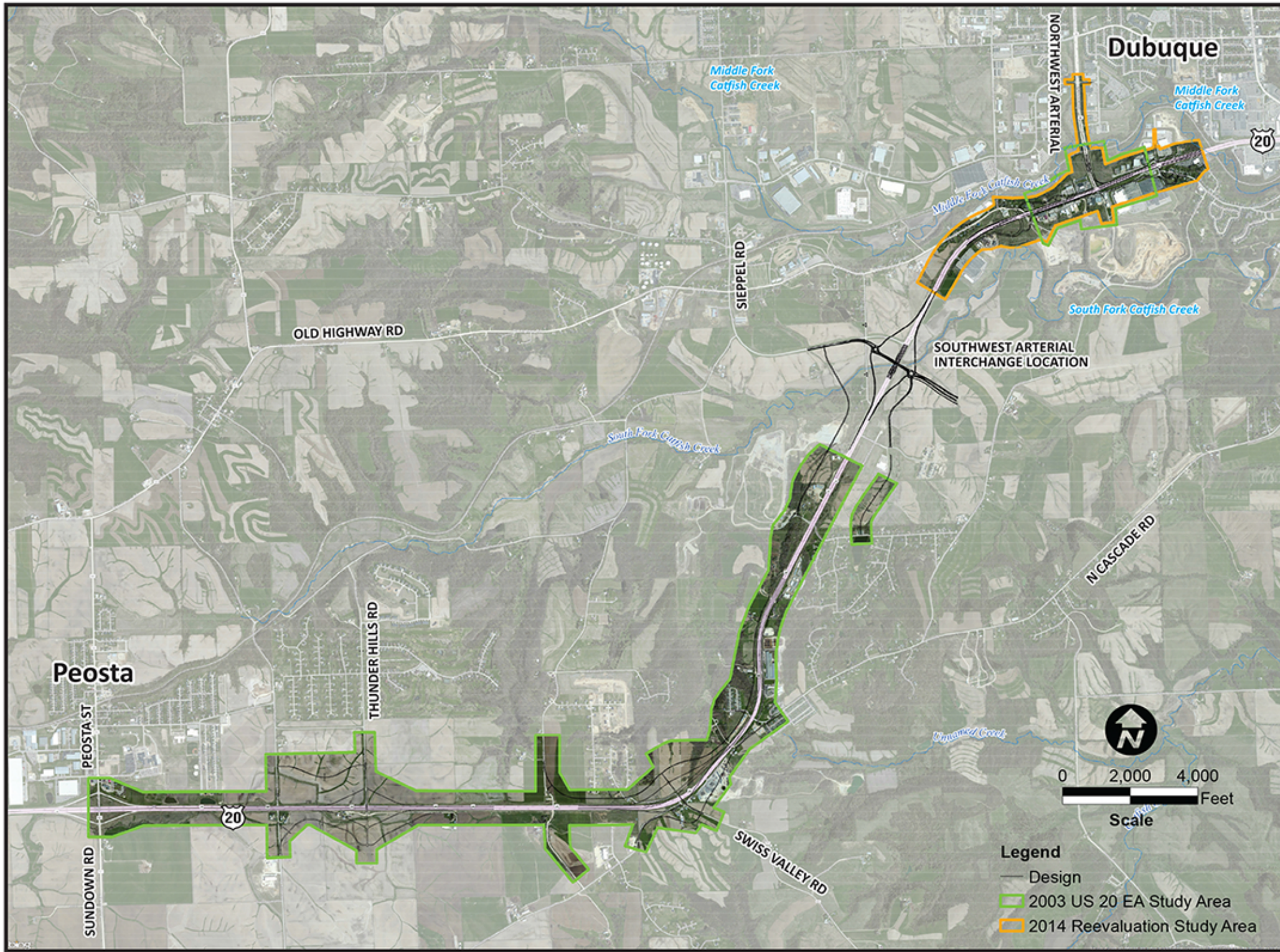




# US 20 Location Study



## Total Project Study Area



# US 20 Location Study



## Right-of-Way Comparison

Refined Alternative	Potential Right-Of-Way / Property Impacts	
Alternative A	<ul style="list-style-type: none"> <li>• 11 Full Residential Properties</li> <li>• 20 Acres Partial Commercial</li> <li>• 16 Full Commercial Properties</li> </ul>	
Alternative B (Preferred Alternative)	<ul style="list-style-type: none"> <li>• 3 Full Residential Properties</li> <li>• 12.4 Acres Partial Commercial</li> <li>• 4 Full Commercial Properties</li> </ul>	

Source: HDR based on proposed Alternatives, October 2012

This display identifies a preliminary number of potential right-of-way (ROW) impacts. The final determination of partial versus full ROW acquisitions will be identified during final design.