

Preliminary, Subject to Change



# Iowa 2 Fremont County Overflow Bridge

AGC Update

May 9, 2019

Preliminary, Subject to Change

# Project Location

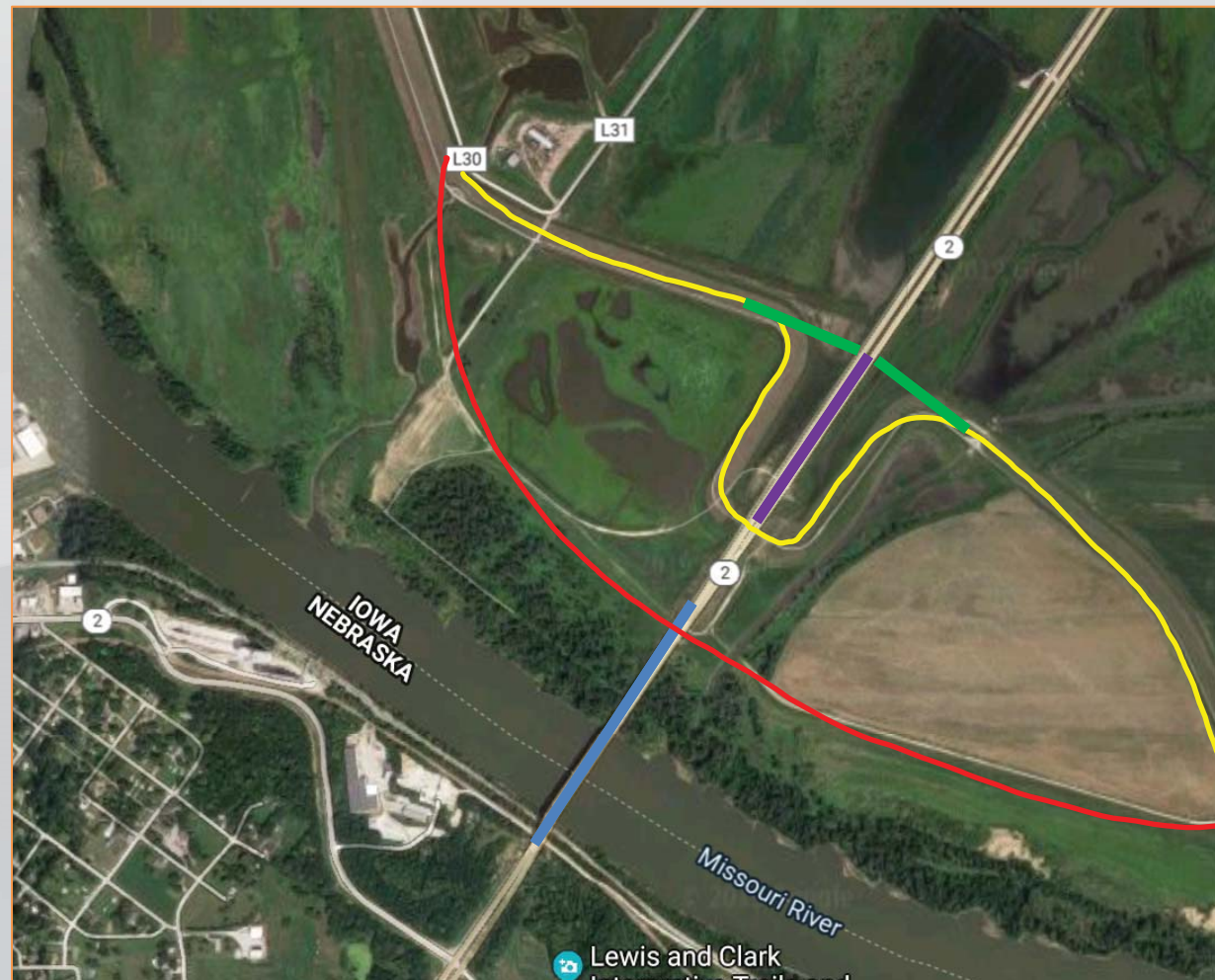
---



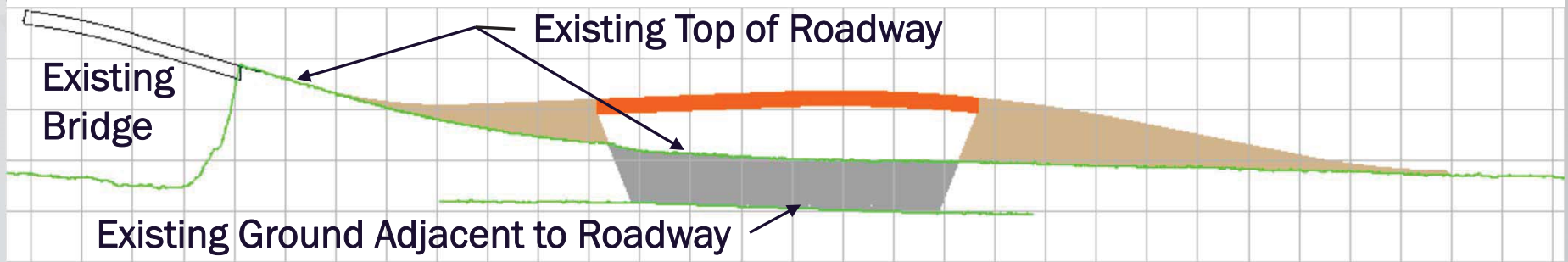
Preliminary, Subject to Change

# Proposed Project Concept

- Construct two 40' wide x 1100' long overflow bridges (shown in purple)
- Realign the levee (shown in green)
- Minimize closure times as much as possible



# Preliminary, Subject to Change Conceptual Plan and Profile



- New Pavement
- New Multi-span Bridge
- New Embankment
- Removal of existing Roadbed and levee



# Goals

---

- Provide a functional overflow by March 1, 2020
- Maintain traffic
- Continuous levee protection



Preliminary, Subject to Change

# Schedule

2019								
April	M	J	July	A	S	O	Nov	D
Preliminary Engineering								
	Final Road Design							
	Bridge Design							
		Advertise	Letting					
				Critical Construction				
		ROW Acquisition						
		408 Permit						





# Preliminary, Subject to Change

**NL1**

Do we care about showing AGC the ROW and Permitting rows?

Narigon, Linda, 5/8/2019

# Schedule - continued

2020										
J	F	M	A	May	J	July	A	S	O	Nov
		Remaining Construction								





# Preliminary, Subject to Change

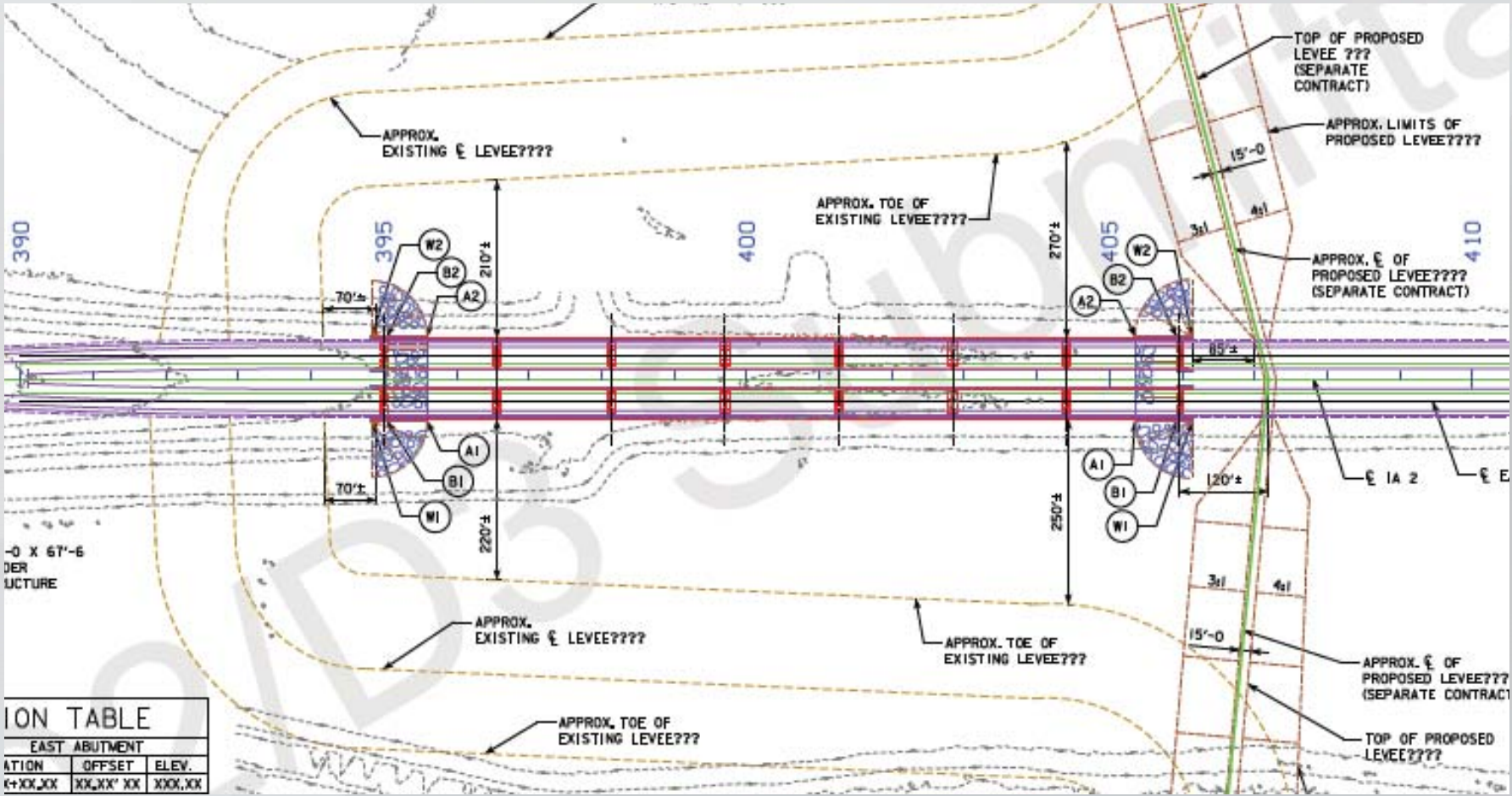
**NL1**

Do we care about showing AGC the ROW and Permitting rows?

Narigon, Linda, 5/8/2019

Preliminary, Subject to Change

# Bridge Information



ION TABLE

EAST ABUTMENT

STATION	OFFSET	ELEV.
←XXX.XX	XX.XX' XX	XXX.XX



# Bridge Information

---

- **Knowns at this stage of development**
  - 7 spans, BTE155 beams, 6 beams per cross-section.
  - Conventional deck with option for full depth precast deck panels.
  - 34" tall F-shape barriers.
  - Stub abutments.
  - Finger plate expansion devices with neoprene troughs.
  - Bridges will be designed for downdrag



# Bridge Information

---

- **Unknowns at this stage of development**
  - Potential scour depth currently unknown.
  - As-builts in the area indicate primarily sandy soil down to rock. Boring information is being collected.
  - Two column frame piers are probable pending consultant review of ice and debris potential.  
*Pier designs will be repetitive.*



# Bridge Information

---

- **Unknowns at this stage of development**
  - Foundations design is pending. Steel H-piles driven to rock are probable.
  - Cofferdams with seal coats are likely.



Preliminary, Subject to Change

# Bridge Information

---

- Do you see any proactive approaches we should be considering at this time?



Preliminary, Subject to Change

# Roadway Information

- Knowns at this stage of development
  - Will be maintaining 2 lanes of traffic – 1 each EB and WB
  - Estimated Quantities
    - Contractor furnished borrow will be needed

Preliminary Earthwork

	Cut cy	Fill + 30% cy	Need
Stage 1			
Widen WB	2,100	140	-1,960
Stage 2			
West	1,140	21,510	
East	2,180	55,230	
Subtotal	3,320	76,740	73,420
Stage 3			
West	1,400	26,140	
East	1,150	46,510	
Subtotal	2,550	72,650	70,100
Total:	7,970	149,530	141,560

Other Quantities:

Pavement/Shoulders:	17,500	SY
Granular Shoulders:	16,600	SY
Temporary Pavement:	4200	SY



# Roadway Information

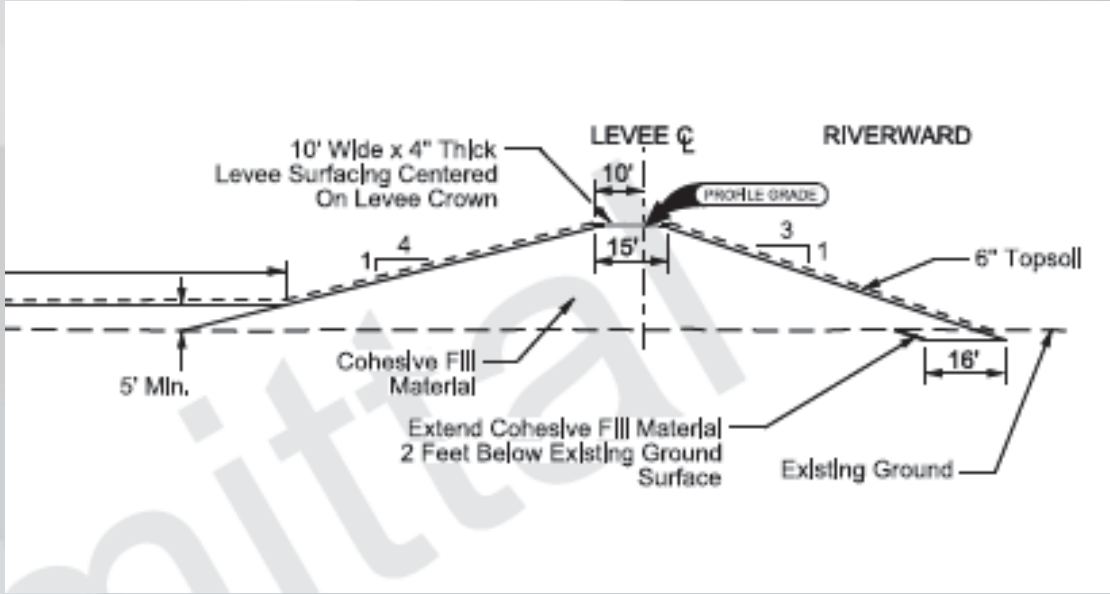
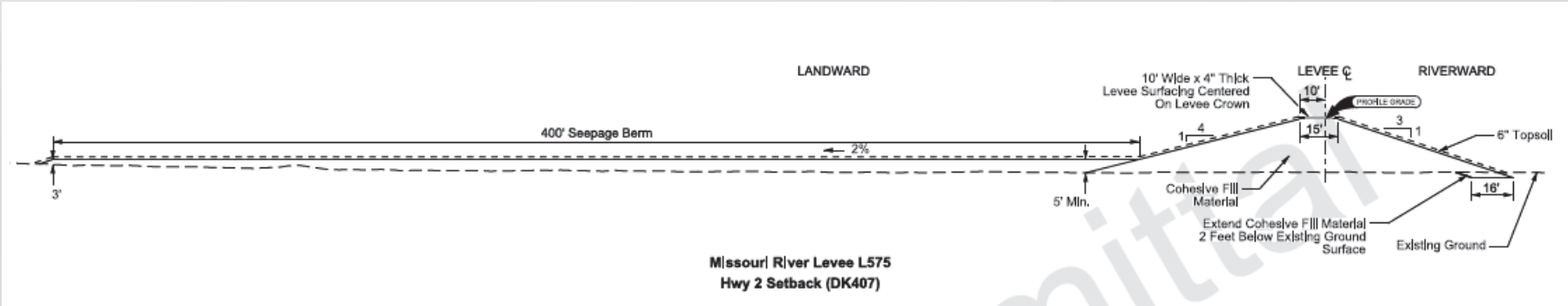
---

- **Unknowns at this stage of development**
  - Settlement is expected . Sacrificial pavement may be our approach.
  - There is one utility affected by the project. Relocation plans are being developed.
- Do you see any proactive approaches we should be considering at this time?



Preliminary, Subject to Change

# Levee Information



# Levee Information

---

- **Knowns at this stage of development**
  - Two fill materials are required
    - Cohesive Fill for the levee core
    - Loose/Random Fill for the seepage berm
  - Will be contractor furnished materials
  - Levee core is required to be built through the roadway embankment.
  - Remove the old levee after the new levee is complete.



# Levee Information

---

- Unknowns at this stage of development
  - Extent of seepage berms
  - Requirements for dewatering the area for construction of the levee core



# Contracting

---

- Anticipated letting is early July 2019
- Anticipated advertisement is mid June 2019
  - 3 week time period
- Federal participation
- Proposal and preliminary plans will be available
- March 1, 2020 completion date for EB Bridge, EB Roadway, Levee, and embankment removals



# Contracting

---

- Plans may be updated during advertising period by addendum.
- After letting, plan updates will be provided as they become available with full plans by the 1<sup>st</sup> week of August.
- Quantity changes will be handled per specifications.



Preliminary, Subject to Change

## Additional Information

---

- Possible early June Constructability Meeting
- May post For-Information-Only plans





Preliminary, Subject to Change

# Questions?

