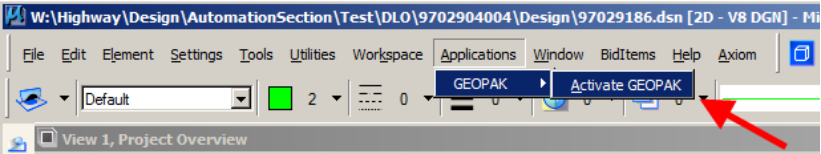


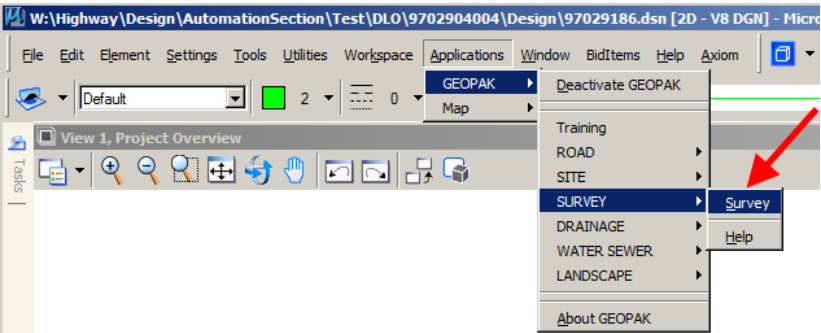
Survey Preferences

Design Manual
Chapter 40
Design Survey
Specifications
Originally Issued: 09-30-11

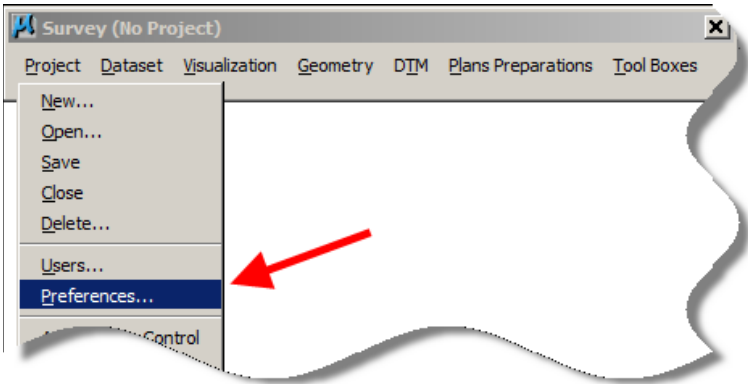
Start GEOPAK from the MicroStation menu by selecting **Applications > GEOPAK > Activate GEOPAK**, as shown at the right.



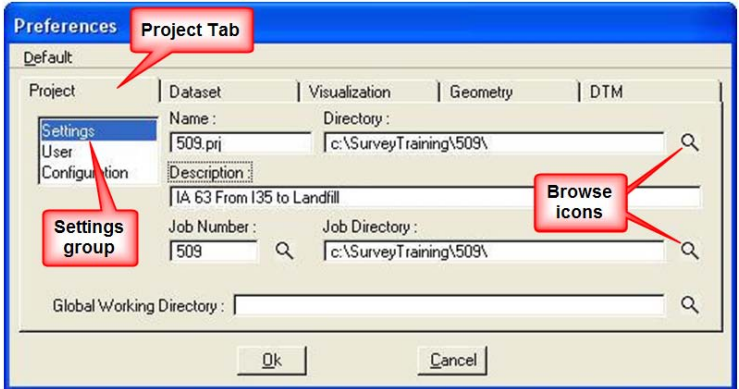
After GEOPAK has been activated, access the GEOPAK Survey menu from the MicroStation menu by selecting **Applications > GEOPAK > SURVEY > Survey**, as shown at the right.



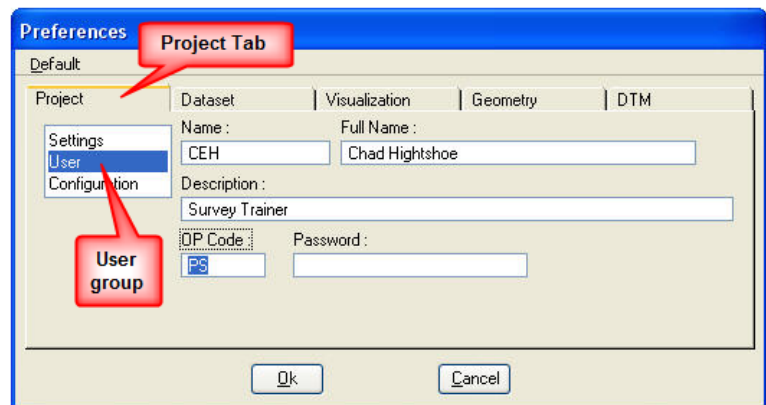
From the GEOPAK Survey menu tool bar, select **Projects > Preferences**.



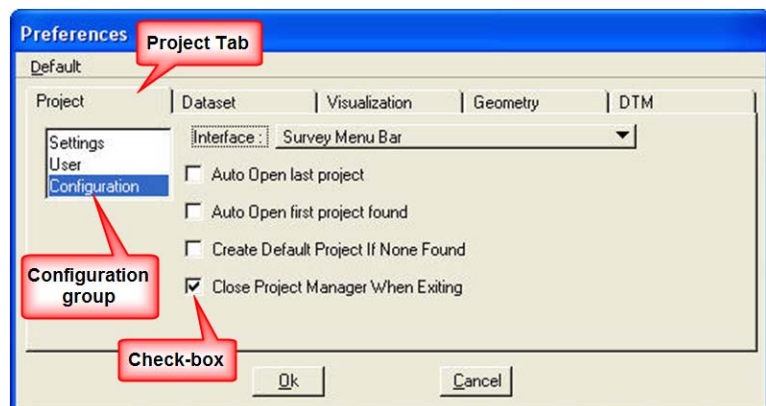
Complete the **Project > Settings** based on the Survey And Photogrammetry Number (**SAP#**); e.g. **509** in this example. Use the Browse icons to locate the appropriate **Directories** (folders).



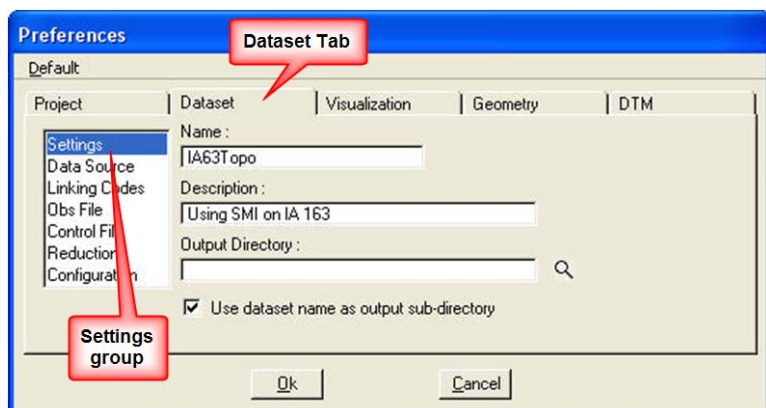
Fill in the **Project > User** information based on the party chief.



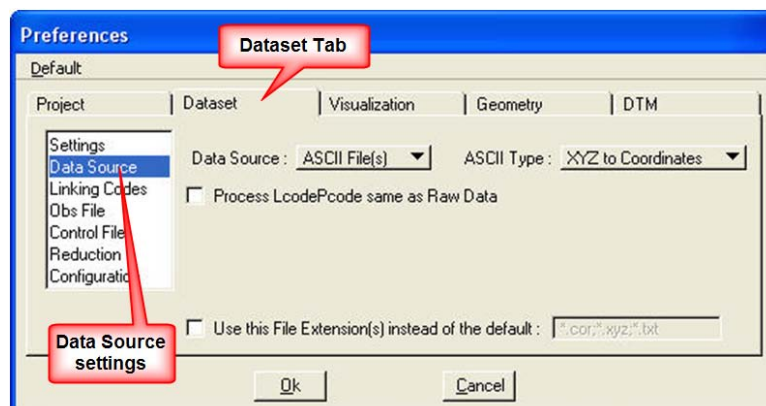
For the **Project > Configuration** information, the *check-box* for “Close Project Manager When Exiting” can be checked () , as shown at the right.



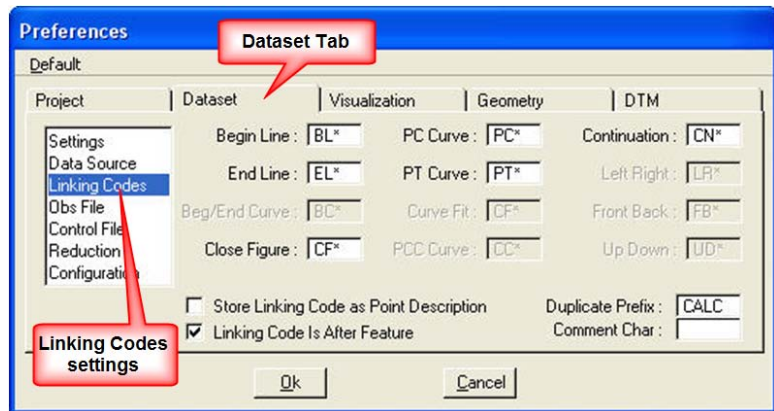
The **Dataset > Settings** preferences: The data entered here will be used as the defaults for the dataset names and descriptions that will be created later in the process.



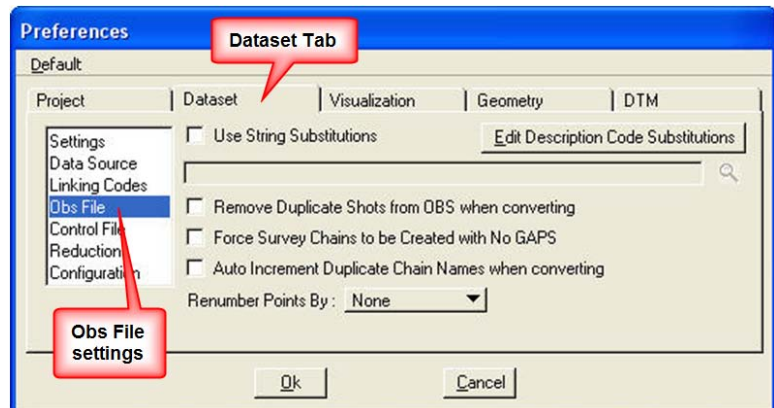
The **Dataset > Data Source** information sets the type of file the dataset will use.



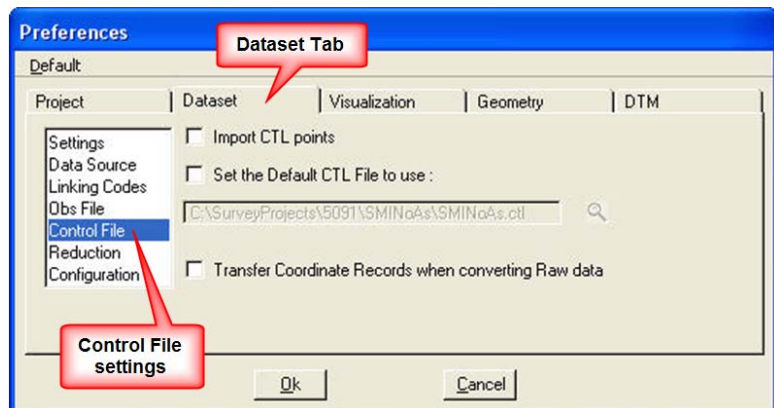
Dataset > Linking Codes will not be used. Therefore, the settings in this dialog do not matter.



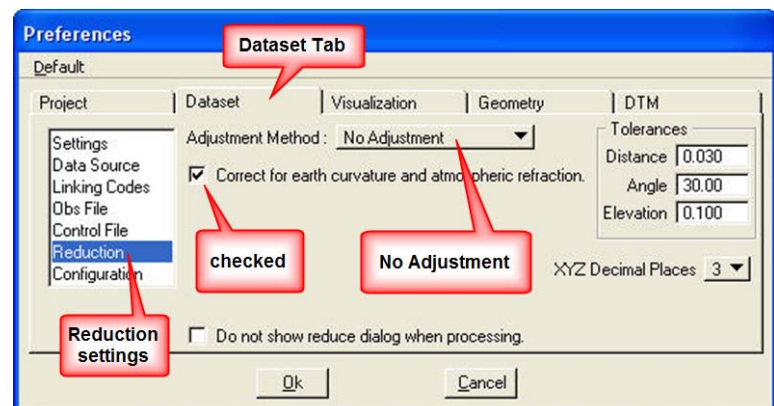
The default **Dataset > Obs File** settings should be used as shown.



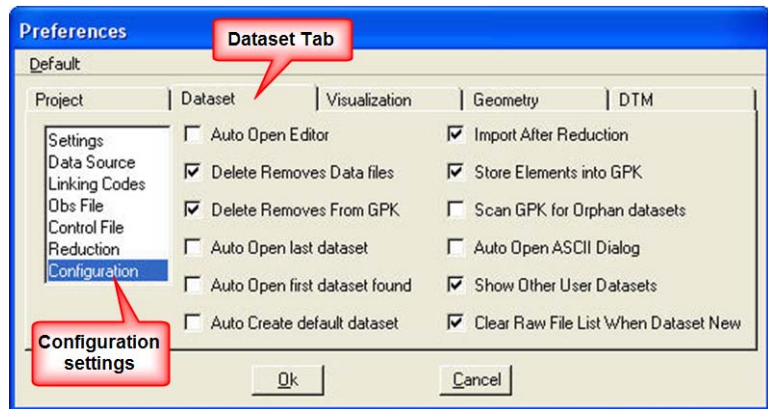
Use the default **Dataset > Control File** settings, as shown.



In the **Dataset > Reduction** preference settings dialog, the **Adjustment Method** should be set to **No Adjustment**, and the “**Correct for earth curvature ...**” check-box should be checked (☑).



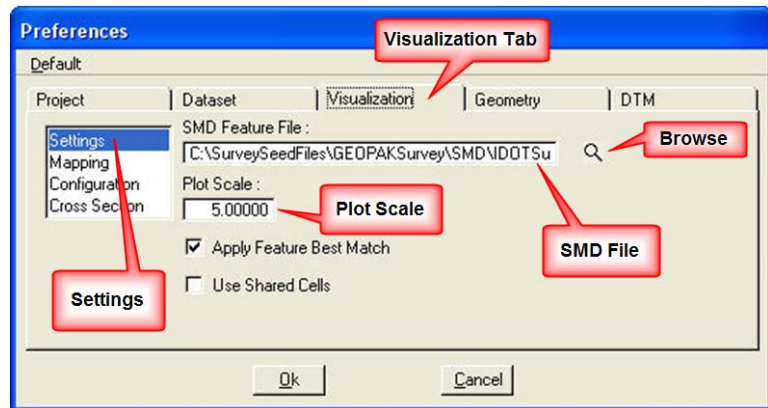
The **Dataset > Configuration** *checkboxes* values determine how the Dataset operations run.



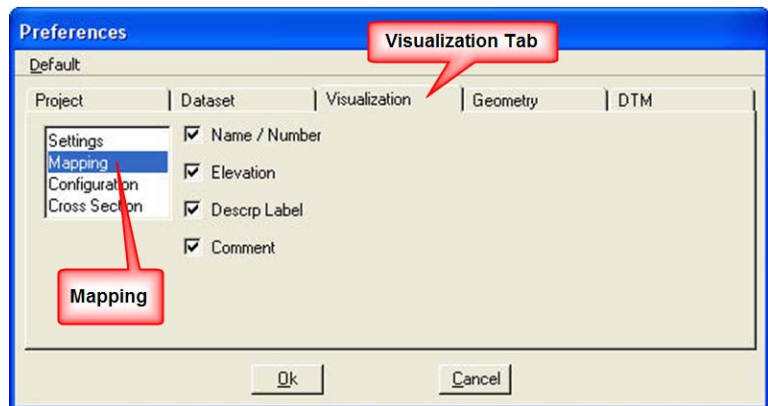
The **Visualization > Settings** determines what “SMD Feature File” to use and what **Plot Scale** is to be used to draw the objects.

Use the **Plot Scale** of 5, and an **SMD File location** as shown below. Use the browse button (🔍) to locate the SMD file location.

C:\SurveySeedFiles\GEOPAKSurvey\SMD\IDOTSurvey.smd

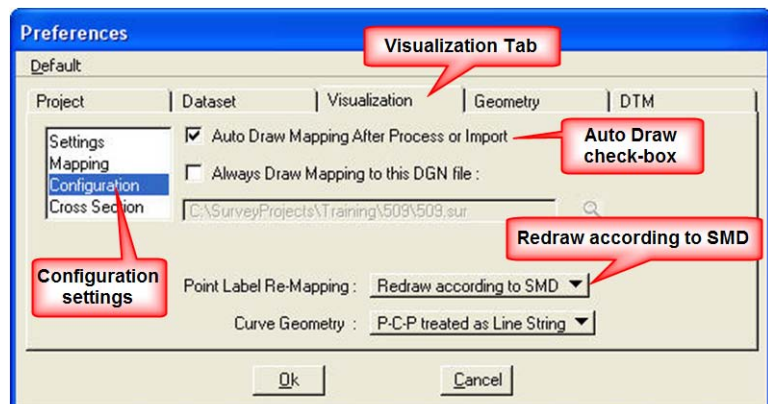


All settings *checkboxes* should be *checked* (☑) on the **Visualization > Mapping Preferences** dialog. This will give you the ability to plot these items in MicroStation.

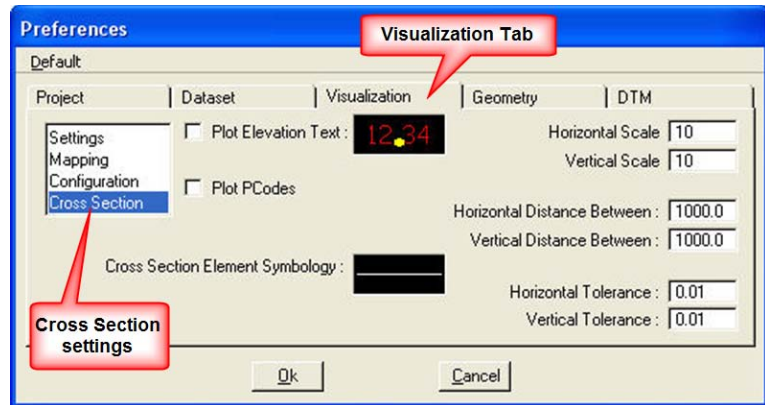


For the **Visualization > Configuration** preference settings, the “Auto Draw ...” *checkbox* should be *checked* (☑), which will cause the survey information to automatically draw after processing.

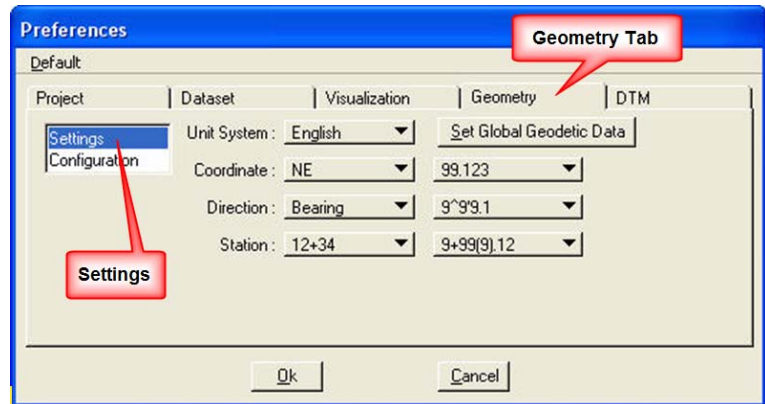
The **Point Label Re-Mapping** should be set to **Redraw according to SMD**.



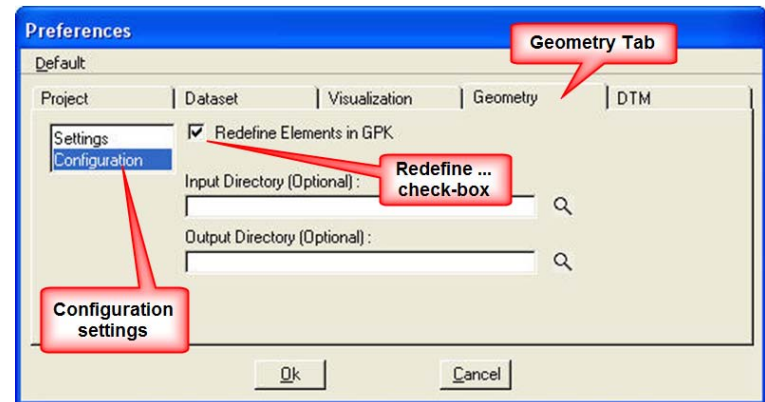
Use the default values for the **Visualization > Cross Section** preference settings.



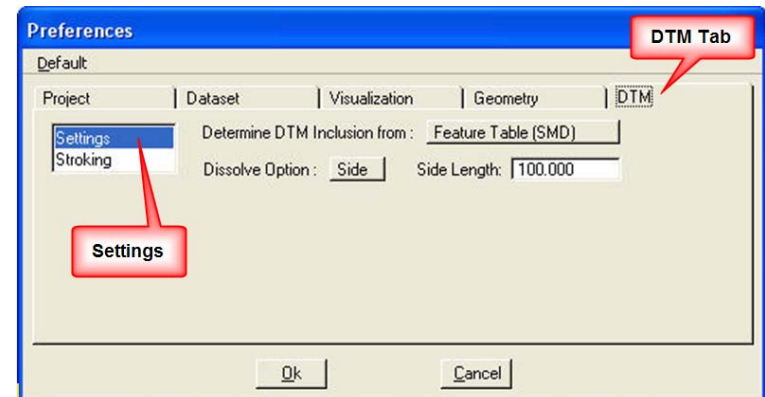
Use the values as shown at the right for the **Geometry > Settings** preferences for an English project,



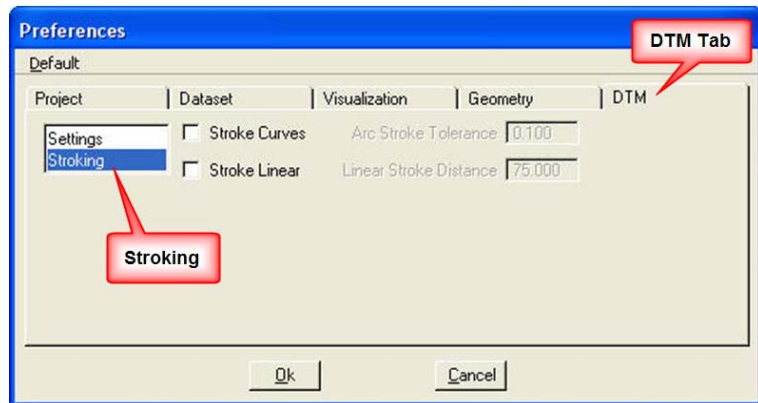
For the **Geometry > Configuration** settings, the “Redefine Elements in GPK” check-box should be checked (☑). This will allow for the editing of information after it has already been processed.



The **DTM > Settings** preferences should be set as shown at the right. These settings determine how the “tin” file is created.

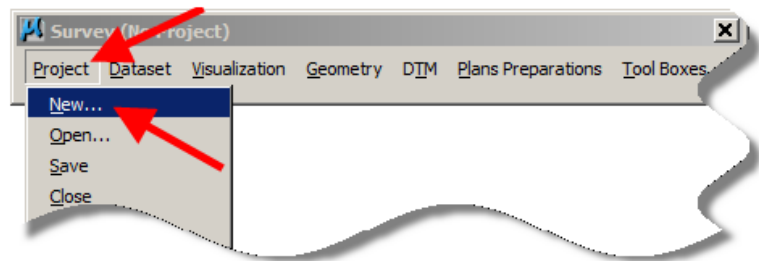


Use the default settings for the **DTM > Stroking** preferences, as shown at the right.



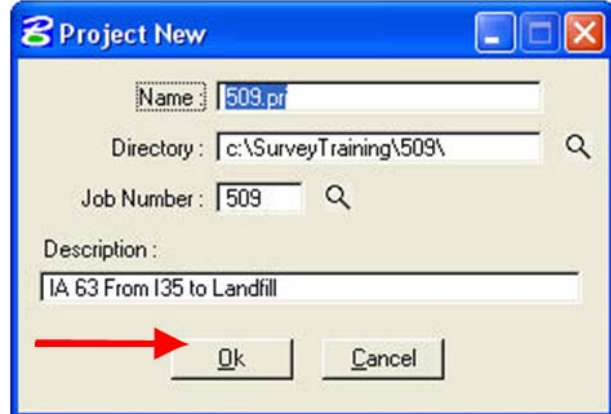
Now that the Preferences have been set you can create the GEOPAK Survey project.

From the GEOPAK **Survey** menu tool bar, select **Project > New**.



The **Project New** dialog will appear. It should contain the correct information from the **Preferences** that have been set.

When the values are correct, *click* the **OK** button.



Chronology of Changes to Design Manual Section:

040D-002 Survey Preferences

9/30/2011	NEW
	New