

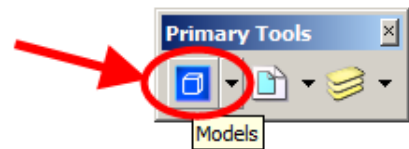
Processing Datasets in Models and Zones

Design Manual
Chapter 40
Design Survey
Specifications
Originally Issued: 09-30-11

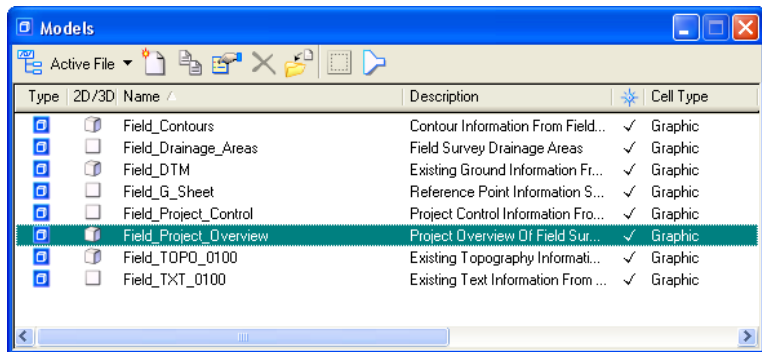
1. Models

Each MicroStation file contains numerous models. Models allow the information contained in the file to be categorized for easier use by the customer. You can think of the MicroStation file as a notebook and the models as sheets within this notebook. When you open the “.sur” file for the first time you should be in the **Field_Project_Overview** model. When first creating your datasets and importing the field information into GEOPAK, this is where everything will be drawn. After the field survey is done and all of the information is correctly loaded into GEOPAK, you can delete all of the elements from this model. You are now ready to place the survey information into its correct and final model.

To change models, *click* the blue **Models** button on the **Primary Tools** tool bar.



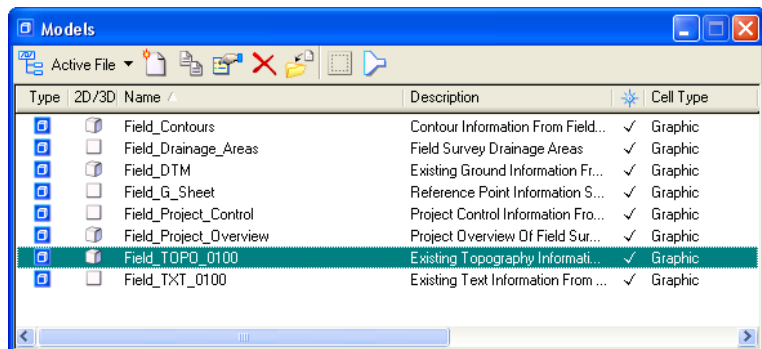
This will open the **Models** dialog. The model highlighted in green is the active model and should initially be the **Field_Project_Overview** model when the file is opened for the first time.



2. Field_TOPO_0100 model

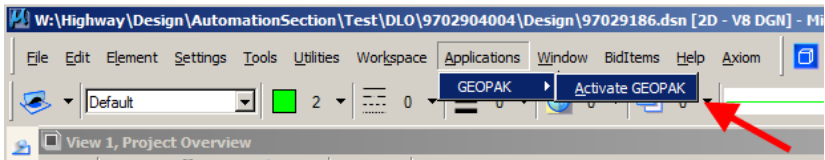
In the **Models** dialog box, *double-click* on **Field_TOPO_0100** to open the model.

Double-clicking the model name should open the model and also cause it to become the active model. We will now draw all of the field collected survey data related to the TOPO (plan view) model.

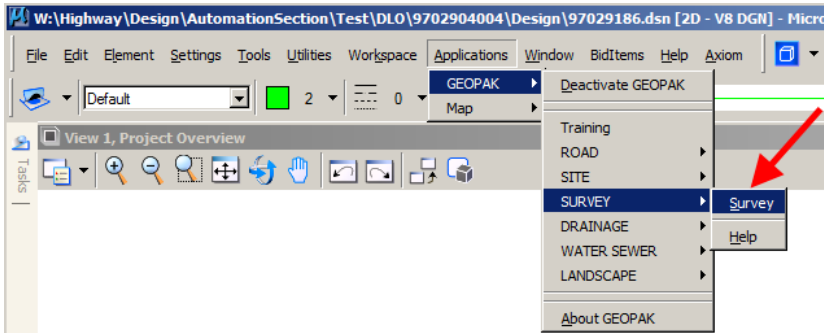


3. Geopak Survey menu

Start GEOPAK from the MicroStation menu by selecting **Applications > GEOPAK > Activate GEOPAK**, as shown at the right.



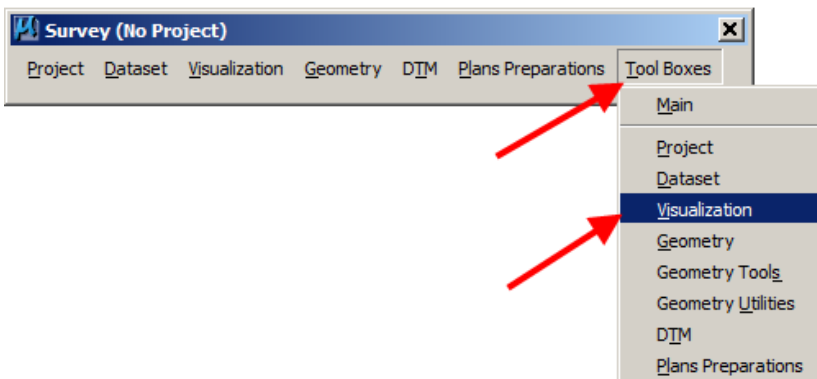
After GEOPAK has been activated, access the GEOPAK **Survey** menu from the MicroStation menu by selecting **Applications > GEOPAK > SURVEY > Survey**, as shown at the right.



The **Survey** menu should display, as shown below.

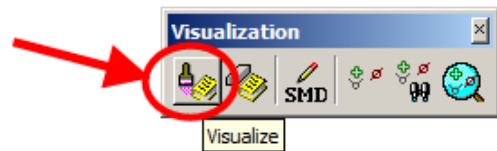
4. Visualization

- A) From the **Survey** menu tool bar, *select Tool Boxes > Visualization*, as shown at the right.



The **Visualization** tool will open, as shown below.

- B) On the **Visualization** tool bar *click the Visualize* tool.

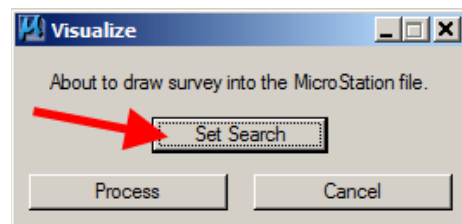


This will open the **Visualize** dialog box, as shown below.

5. Set Search

Click the **Set Search** button on the **Visualize** dialog.

This will open the **Set Search** dialog box, as shown below.



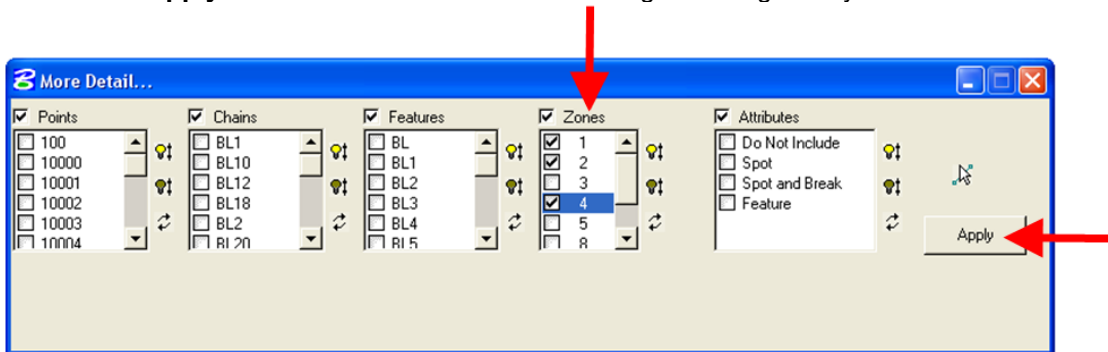
6. Select Datasets

On the **Set Search** dialog, select the datasets that you want to draw into this model. You can usually *click* the **Mark All** button to select all of the datasets because we want to draw all of the items related to this model. After selecting the correct datasets, *click* the **More Detail** button. This will open the **More Detail...** dialog box, as shown below.



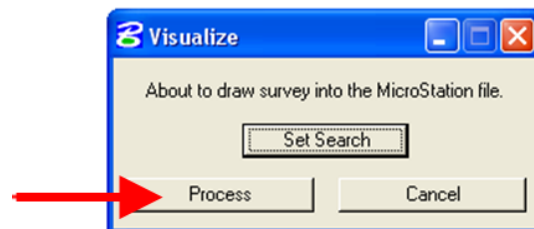
7. More Detail

Now it is time to pick what **Zones** belong in this model. “**Zones**” is a GEOPAK term and it means “**a group of like objects**”. For a full description of which zones are placed in which model(s), see the instruction file [ZoneAndColorDesc.pdf](#). For the **Field_TOPO_0100** model, you want to select zones **1, 2, 4** and **8**. *Click* the **Apply** button and the **More Detail...** dialog box will go away.



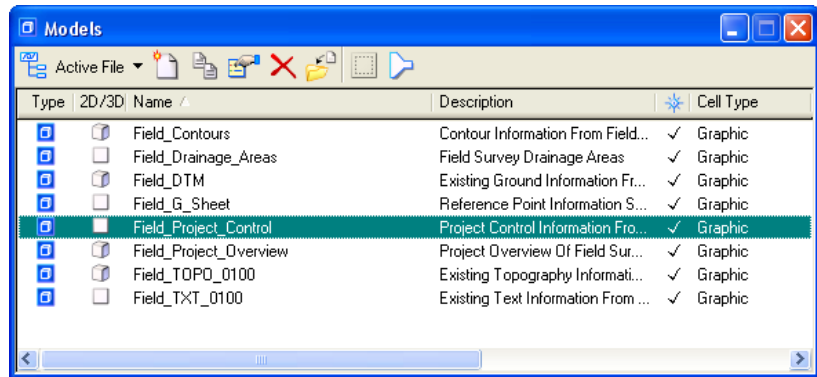
8. Process

Click the **Process** button on the **Visualize** dialog box. All of the survey items from **Zones 1, 2 and 4** will now be drawn into the MicroStation model.



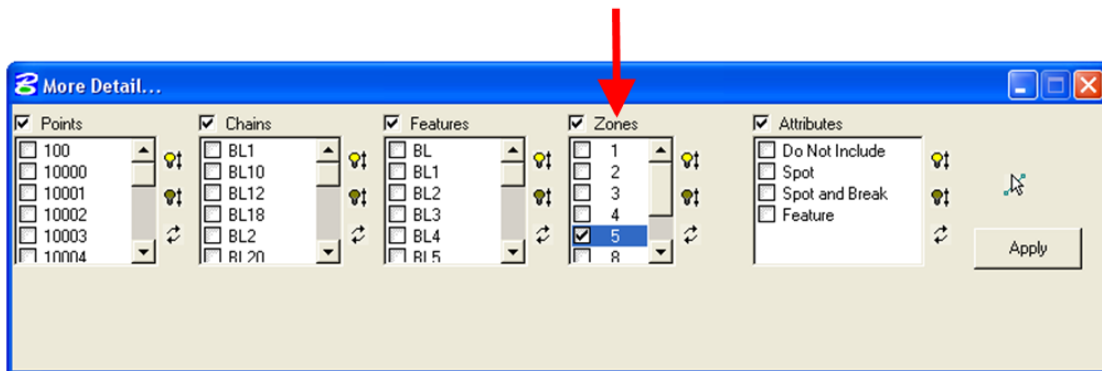
9. Field_Project_Control model

In the **Models** dialog box, *double-click* on **Field_Project_Control** to open the model.



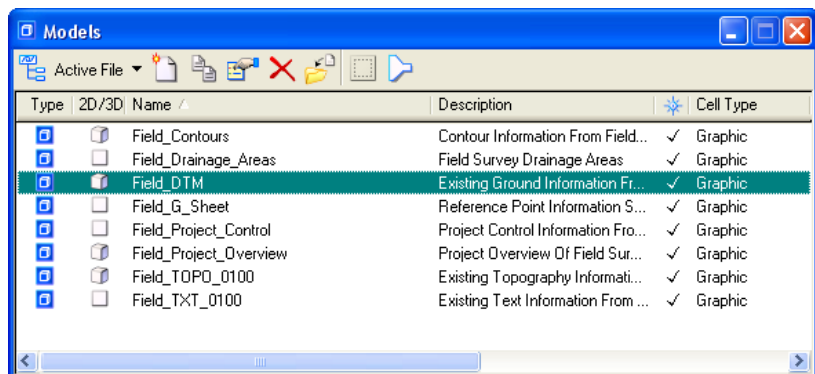
Repeat steps 4B, 5, 6, 7, and 8 for the Field_Project_Control Model

Click on the **Visualize** button, **Set Search**, **select datasets**, and press **More Details** as in **steps 4B, 5, 6, 7, and 8**, above. Then make sure that zone **5** is the only one *checked* () for the **Field_Project_Control** model. *Click* the **Apply** button. Then *click* **Visualize > Process**, as in step 8, above. All of the survey information from zone 5 is now drawn into this model.



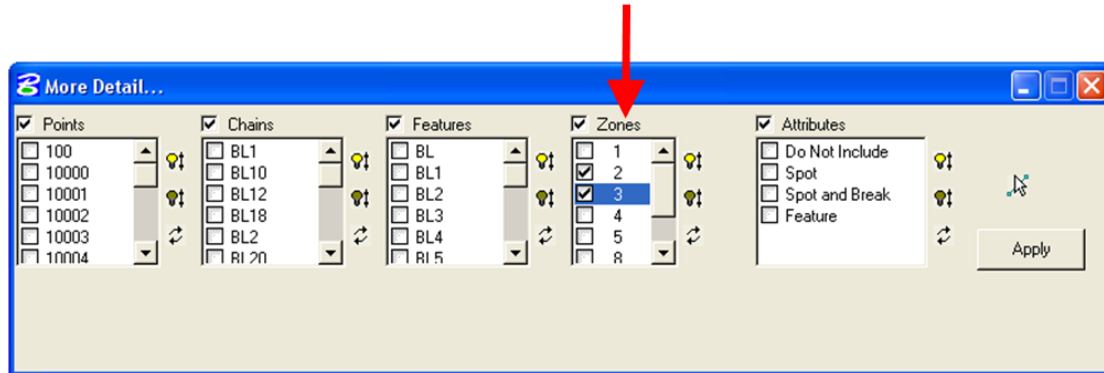
10. Field_DTM model

In the **Models** dialog box, *double-click* on **Field_DTM** to open the model.



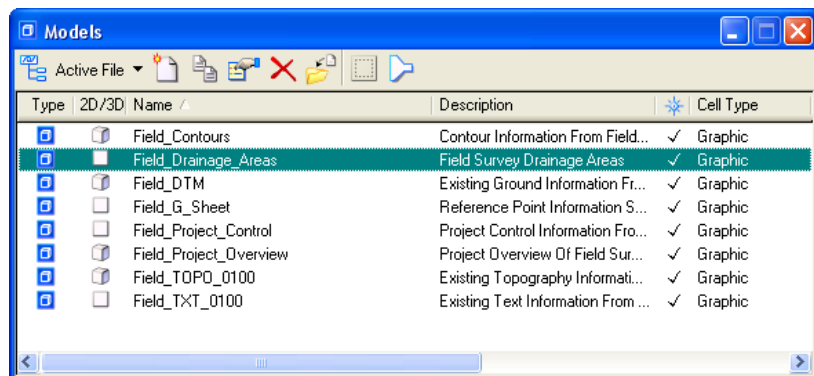
Repeat steps 4B, 5, 6, 7, and 8 for the Field_DTM model

Click on the **Visualize** button, **Set Search**, **select datasets**, and press **More Details** as in **steps 4B, 5, 6, 7, and 8**, above. Then make sure that zones **2** and **3** are the only ones *checked* () for the **DTM** model. Click the **Apply** button. Then *click Visualize > Process*, as in step 8, above. All of the survey information from zones 2 and 3 are now drawn into this model.



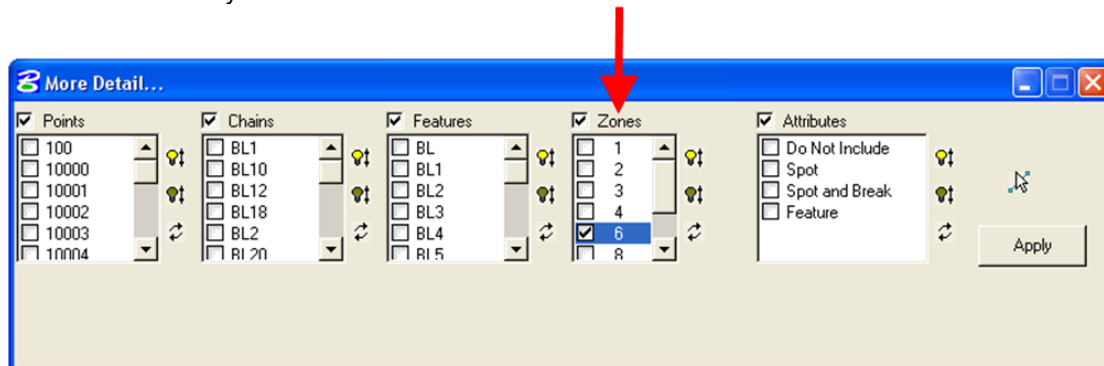
11. Field_Drainage_Areas model

In the **Models** dialog box, *double-click* on **Field_Drainage_Areas** to open the model.



Repeat steps 4B, 5, 6, 7, and 8 for the Field_Drainage_Areas model

Click on the **Visualize** button, **Set Search**, **select datasets**, and press **More Details** as in **steps 4B, 5, 6, 7, and 8**, above. Then make sure that zone 6 is the only one *checked* () for the **Field_Drainage_Areas** model. Click the **Apply** button. Then *click Visualize > Process*, as in step 8, above. All of the survey information from zone 6 is now drawn into this model.



Chronology of Changes to Design Manual Section:

040D-007 Processing Datasets in Models and Zones

9/30/2011 NEW
New