



Statewide Iowa's Transportation Alternatives Program
Funding Recommendation



Statewide Iowa's Transportation Alternatives Program

- **Current version of former Transportation Enhancement program that has existed since 1991.**
- **Majority of funding is distributed to Iowa's RPAs and MPOs with \$1 million reserved for statewide projects**
- **Eligible activities include:**
 - On-road and off-road non-motorized trail facilities, safe routes for non-drivers, conversion of abandoned rail corridors for trails, preservation/rehabilitation of historic transportation facilities among others
 - Federal Recreational Trails Program eligible activities
 - Infrastructure-related or non-infrastructure related Safe Routes to School Projects (if local TAP funds are used as well)
 - Scenic Byways (if local TAP funds are used as well)

Project Evaluation Criteria

- **Statewide or multi-regional impact of the project (35 points)**
- **Degree of enhancement of the quality or utility of the state surface transportation system (20 points)**
- **State or multi-regional tourism benefits (10 points)**
- **Degree of statewide or multi-regional planning implemented (35 points)**

Available Funding and Application Summary

- **Estimated FY 2022 Appropriation: \$10,764,227**
 - \$1,374,817 set aside for Recreational Trails.
 - Half (\$4,694,705) reserved for local projects, half stays at the state level.
 - The set-aside for Statewide TAP is \$1,000,000
 - Remaining \$3,694,705 of state level funding is reserved for eligible local projects:
 - Transportation Alternatives Program
 - Highway
 - Bridge
 - Transit

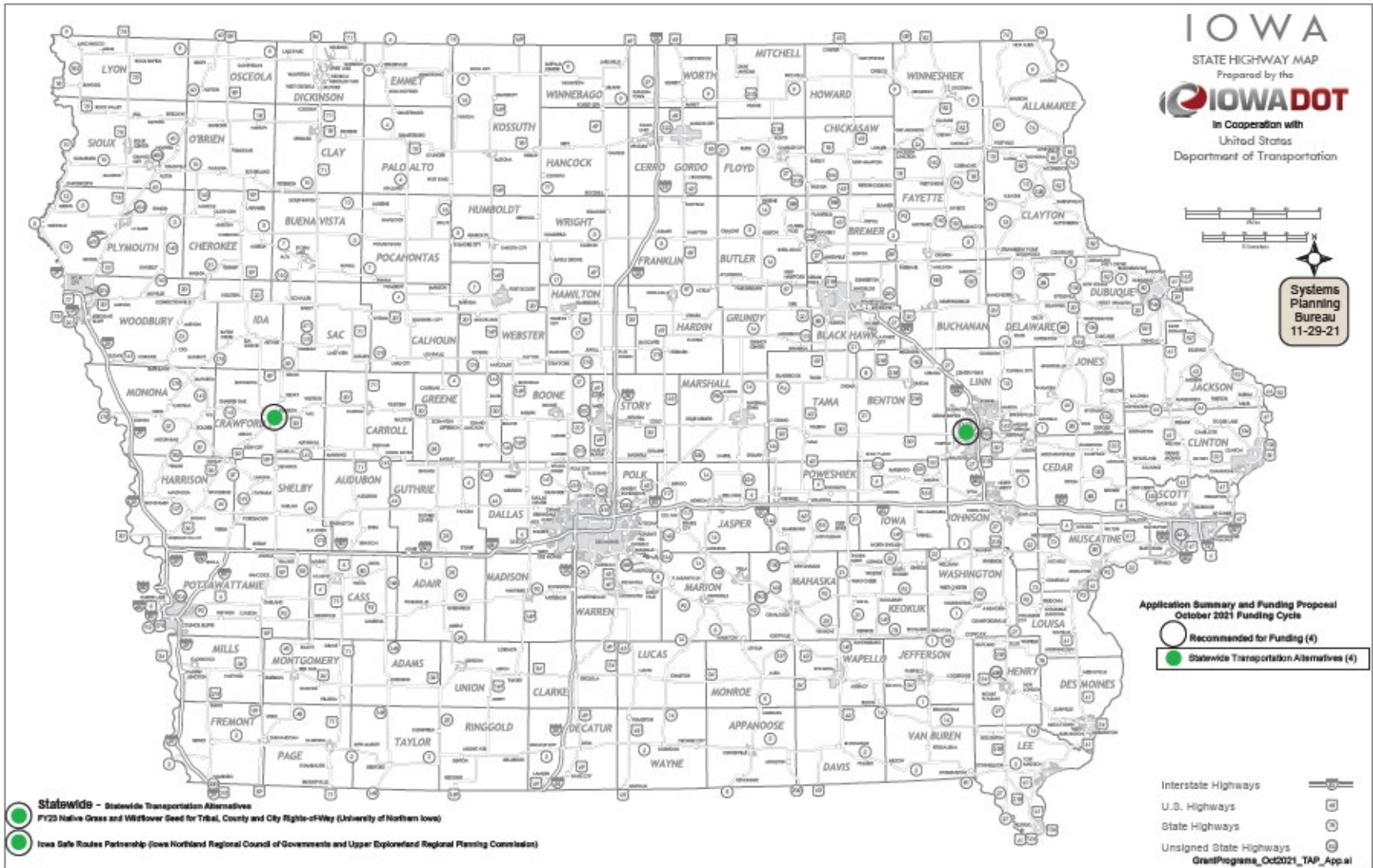
Available Funding and Application Summary

- **Available Funding:**
 - Statewide Iowa's TAP funds available: \$1,000,000 plus previous years under runs
- **Application Summary**
 - Total number of projects: 4
 - Total project costs: \$2,224,387
 - Total amount requested: \$984,213

List of Applications Recommended

PROJECT NAME	SPONSOR	SCORE	TOTAL PROJECT COST	REQUESTED AMOUNT (% of Total Project Cost)	RECOMMENDED AMOUNT (% of Total Project Cost)
<u>UNI Integrated Roadside Vegetation Management</u>	University of Northern Iowa/Tallgrass Prairie Center	90	\$1,046,870	\$482,200 (46%)	\$482,200 (46%)
<u>Iowa Safe Routes to School Partnership</u>	Iowa Northland Regional Council of Governments	85	\$297,517	\$238,013 (80%)	\$238,013 (80%)
<u>Coolidge Elementary School & Taft Middle School Project</u>	Cedar Rapids	20	\$480,000	\$144,000 (30%)	\$144,000 (30%)
<u>Weiss Family Safe Routes to Schools Trail</u>	Denison	20	\$400,000	\$120,000 (30%)	\$120,000 (30%)

Map of Applications Received





QUESTIONS?



Susan Hollenkamp
Transportation Alternatives program manager
Susan.hollenkamp@iowadot.us

UNI Integrated Roadside Vegetation Management (University of Northern Iowa/Tallgrass Prairie Center)

Native grass and wildflower seed are to be planted in tribal, county, or city rights-of-way. This allows jurisdictions that apply Integrated Roadside Vegetation Management to more cost effectively establish native roadside vegetation for habitat, biodiversity, erosion control and improved hydrology across Iowa's landscape.



Total Cost: \$1,046,870
Requested: \$482,200 (46%)

Iowa Safe Routes to School Partnership (Iowa Northland Regional Council of Governments and Upper Explorerland Regional Planning Commission)

A comprehensive program that provides support to communities by implementing SRTS initiatives, including pedestrian and bicycle safety education through encouragement activities both inside and outside the classroom.

Total Cost: \$297,517
Requested: \$238,013 (80%)



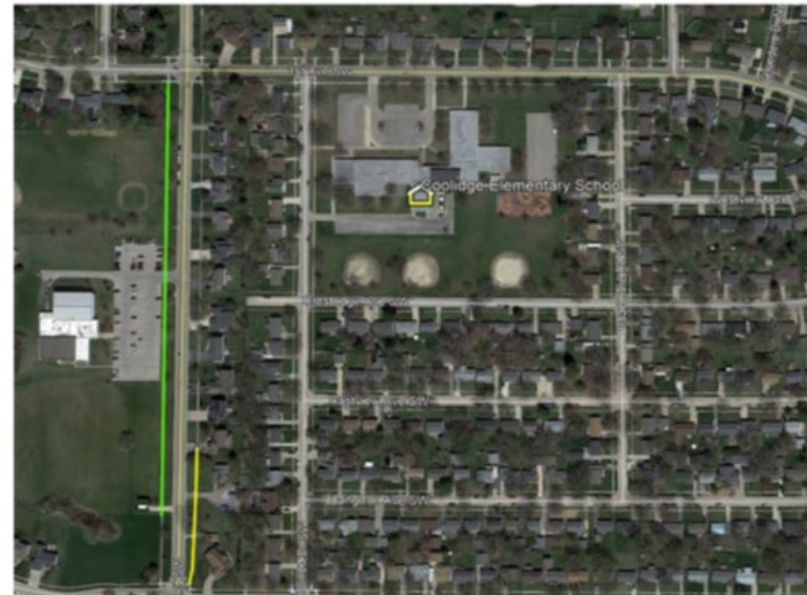
Coolidge Elementary School & Taft Middle School Sidewalk Project (Cedar Rapids)

The project is designed to provide continual safe walking and biking paths for students and other pedestrians through and around Coolidge Elementary and Taft Middle School neighborhoods. An enhanced pedestrian crossing on F Avenue NW will also be provided with the use of a rectangular rapid-flashing beacon (RRFB).

Total Cost: \$480,000
Requested: \$144,000 (30%)

COOLIDGE ELEMENTARY SAFE ROUTES TO SCHOOL

PROJECT LOCATION MAP



Weiss Family Safe Routes to Schools Trail (Denison)

The trail is proposed on land owned by the Weiss family on the west side of N. 20th Street. The project will grade and pave a 10-foot wide trail and set an 85-foot steel truss bridge. The north end of the route terminates across from the existing north sidewalk on Frontier Road. From there it proceeds south across the bridge and along the west side of N. 20th Street to 8th Avenue North where it will turn west along 8th Avenue North to the schools on 16th Street.



Total Cost: \$400,000
Requested: \$120,000 (30%)

