

Lidar Survey for 3D Design Modeling

Working with Lidar Technology
Jonathan Miranda



Safety

The screenshot displays the Leica TruView software interface. The main window shows a 3D point cloud of a landscape, likely a utility site, with a yellow line representing a utility line or fence. The interface includes a top toolbar with various tools like 'Snapshots', 'Snapshot Markup', and '3D Measure & Hotlink'. On the left, there is a 'Control' panel with sections for 'Snapshots' (0), 'Snapshot Markups' (0), and 'Measurements' (0). Below this is the 'Measurement Properties' section, which includes fields for 'Type', 'Color', 'Units' (set to 'US Survey Feet'), 'Distance', and coordinate differences (ΔX , ΔY , ΔZ). At the bottom left, there are 'Hotlinks' (0) and 'Neighbors / File Mgmt' (6) sections. The current station is identified as 'Station-002_SW-002'. The right side of the interface features navigation controls for the 3D view, including a compass and zoom in/out buttons.

Bridge Notes

The screenshot displays the Leica TruView software interface. The main window shows a 3D perspective view of a bridge structure over a railway track. The bridge is rendered in a semi-transparent green color, revealing its internal support structure. Several magenta lines with arrows indicate survey measurements taken from the bridge deck to the ground level. The measurements are labeled as follows:

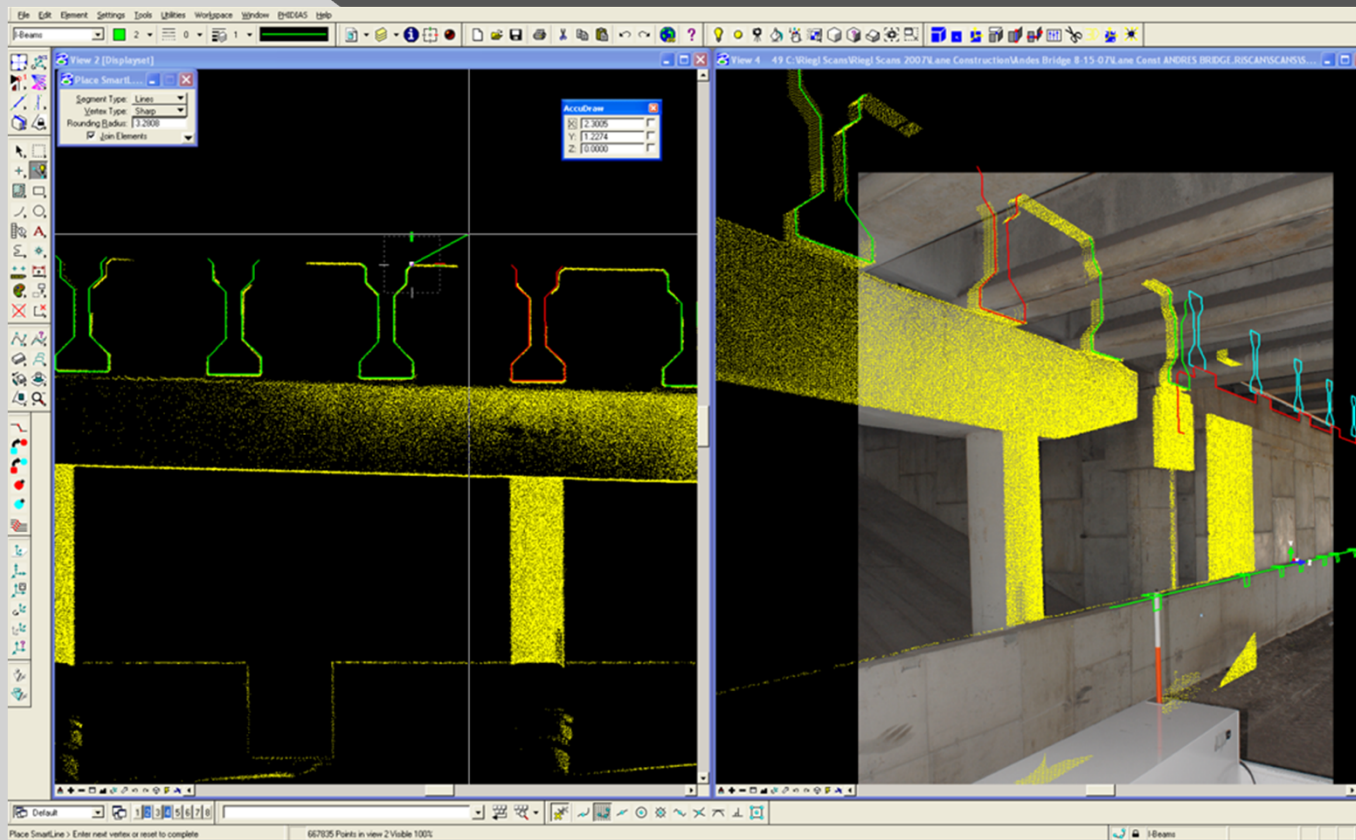
- 43.421 ft (US-Survey)
- 24.436 ft (US-Survey)
- 77.968 ft (US-Survey)
- 23.285 ft (US-Survey)

The left sidebar contains a 'Control' panel with the following sections:

- Snapshots:** 3 (Snapshot#100, Snapshot#101, Snapshot#102)
- Snapshot Properties:** Name: Snapshot#100, User: limirand, Date Created: 11/3/2014
- Snapshot Markups:** 4
- Measurements:** 0
- Hotlinks:** 0
- Neighbors / File Mgmt:** 6
- Current: Station-005_SW-005

The bottom of the screen shows a Windows taskbar with various application icons and a system tray displaying the time as 12:33 PM on 3/25/2015.

As-built



Lidar Animation



Photo Lidar



Google Earth



What to expect

