

LISTING OF PROJECT REVISIONS

DATE	SHEET NUMBER	DESCRIPTION OF REVISIONS	DATE	SHEET NUMBER	DESCRIPTION OF REVISIONS
11-20-07	IA	REVISION SHEET ADDED.			
11-20-07	65-76	WALL ELEVATIONS REVISED. REASON: GRADING CHANGES TO ACCOMMODATE 3' BERM IN FRONT OF ABUTMENTS.			
11-20-07	80 & 81	SUBDRAIN ELEVATIONS REVISED. REASON: REVISED WALL ELEVATIONS.			

**POTTAWATTAMIE COUNTY
DESIGN NOS. 508 & 708
REVISION SHEET**
IOWA DEPARTMENT OF TRANSPORTATION - HIGHWAY DIVISION



CURVE DATA

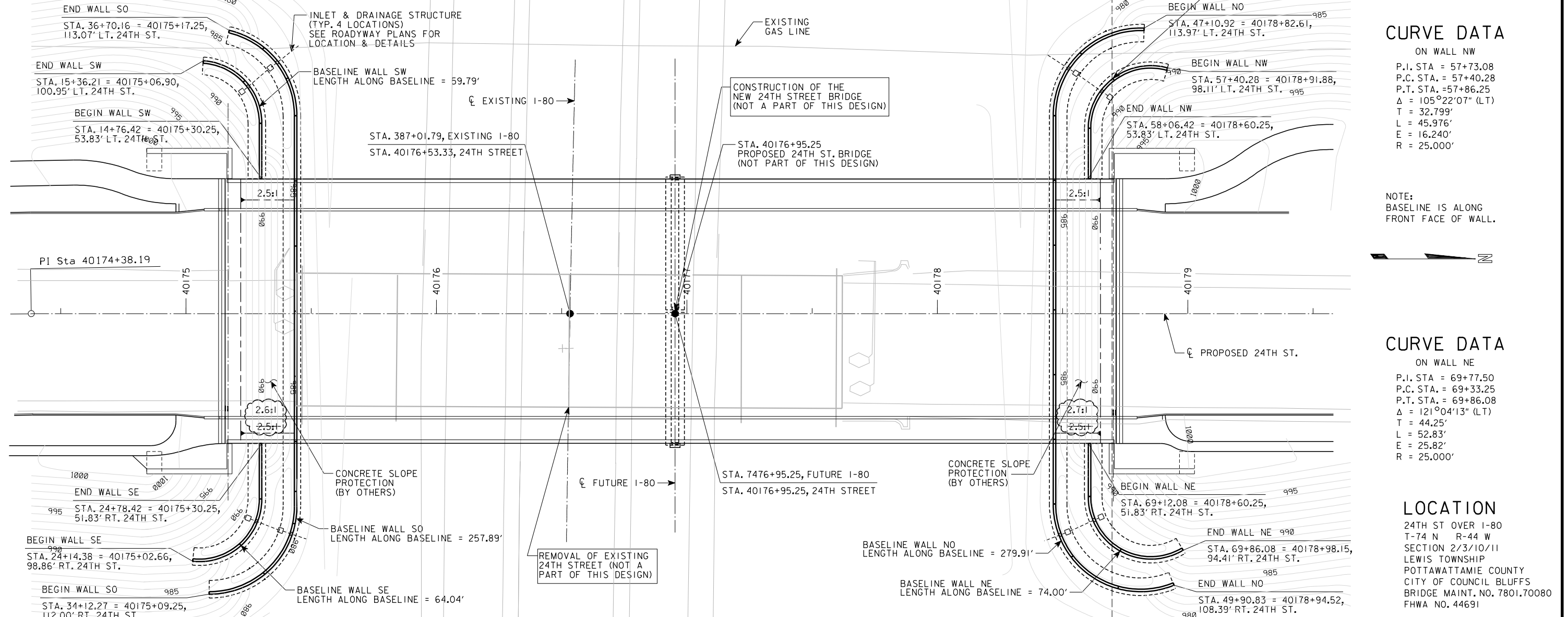
ON WALL SW
 P.I. STA. = 15+21.99
 P.C. STA. = 14+98.59
 P.T. STA. = 15+36.21
 $\Delta = 86^\circ 13' 50''$ (LT)
 T = 23.407'
 L = 37.625'
 E = 9.248'
 R = 25.000'

ON WALL SE
 P.I. STA. = 24+14.38
 P.C. STA. = 24+78.42
 P.T. STA. = 24+78.42
 $\Delta = 86^\circ 13' 50''$ (LT)
 T = 23.407'
 L = 37.625'
 E = 9.248'
 R = 25.000'

CURVE DATA

ON WALL NW
 P.I. STA. = 57+73.08
 P.C. STA. = 57+40.28
 P.T. STA. = 57+86.25
 $\Delta = 105^\circ 22' 07''$ (LT)
 T = 32.799'
 L = 45.976'
 E = 16.240'
 R = 25.000'

ON WALL NE
 P.I. STA. = 69+77.50
 P.C. STA. = 69+33.25
 P.T. STA. = 69+86.08
 $\Delta = 121^\circ 04' 13''$ (LT)
 T = 44.25'
 L = 52.83'
 E = 25.82'
 R = 25.000'



CURVE DATA

ON WALL SE
 P.I. STA. = 24+42.13
 P.C. STA. = 24+14.38
 P.T. STA. = 24+56.25
 $\Delta = 95^\circ 57' 40''$ (LT)
 T = 27.746'
 L = 41.871'
 E = 12.348'
 R = 25.000'

CURVE DATA

ON WALL SO
 P.I. STA. = 34+47.27
 P.C. STA. = 34+12.27
 P.T. STA. = 34+67.25
 $\Delta = 90^\circ 00' 00''$ (LT)
 T = 35.000'
 L = 54.978'
 E = 14.498'
 R = 35.000'

SITUATION PLAN

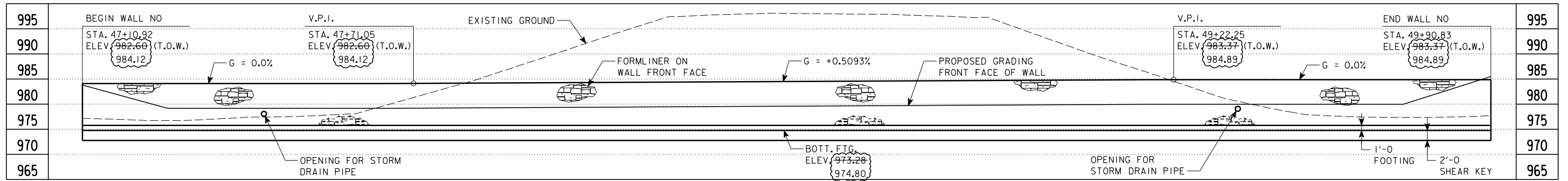
REVISED 11-20-07; TOP OF WALL ELEVATIONS REVISED

CURVE DATA

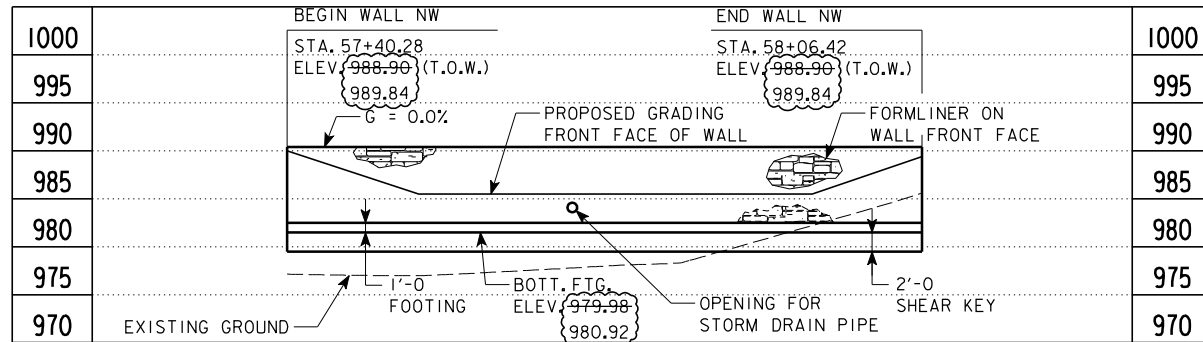
ON WALL NO
 P.I. STA. = 47+47.30
 P.C. STA. = 47+10.92
 P.T. STA. = 47+67.25
 $\Delta = 92^\circ 13' 28''$ (LT)
 T = 36.386'
 L = 56.337'
 E = 15.487'
 R = 35.000'

257'-11 x VAR, 64'-0 x 7'-11, 59'-10 x 7'-11,
 279'-11 x VAR, 74'-0 x 7'-11, 66'-2 x 7'-11

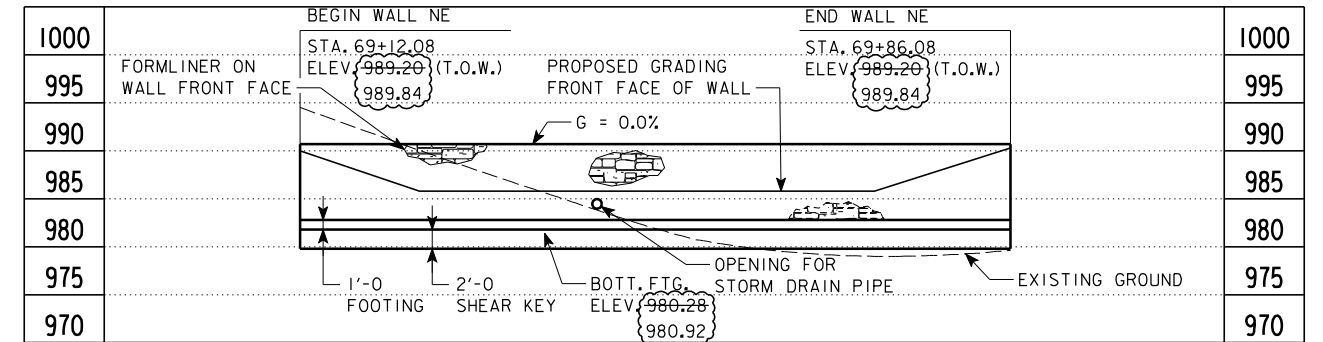
CONCRETE RETAINING WALLS SITUATION PLAN
 STA. 40176+95.25 (24TH STREET) JUNE, 2007
POTTAWATTAMIE COUNTY
 IOWA DEPARTMENT OF TRANSPORTATION - HIGHWAY DIVISION
 DESIGN SHEET NO. 2 OF 18 FILE NO. 30169 DESIGN NO. 708



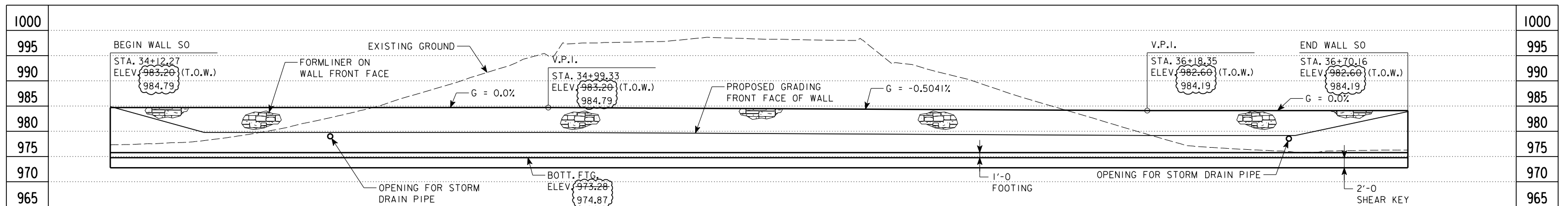
LONGITUDINAL SECTION ALONG \perp WALL NO



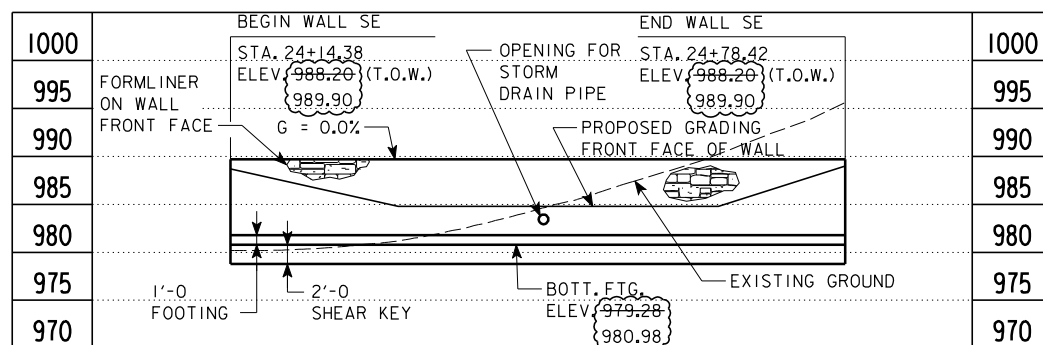
LONGITUDINAL SECTION ALONG \perp WALL NW



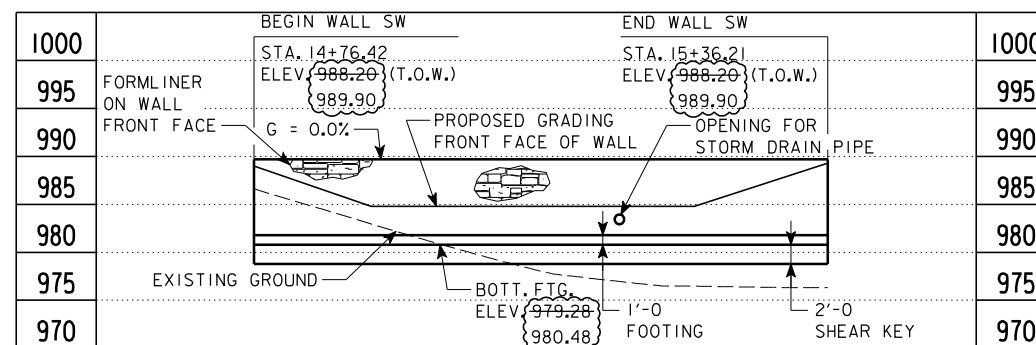
LONGITUDINAL SECTION ALONG \perp WALL NE



LONGITUDINAL SECTION ALONG \perp WALL SO



LONGITUDINAL SECTION ALONG \perp WALL SE

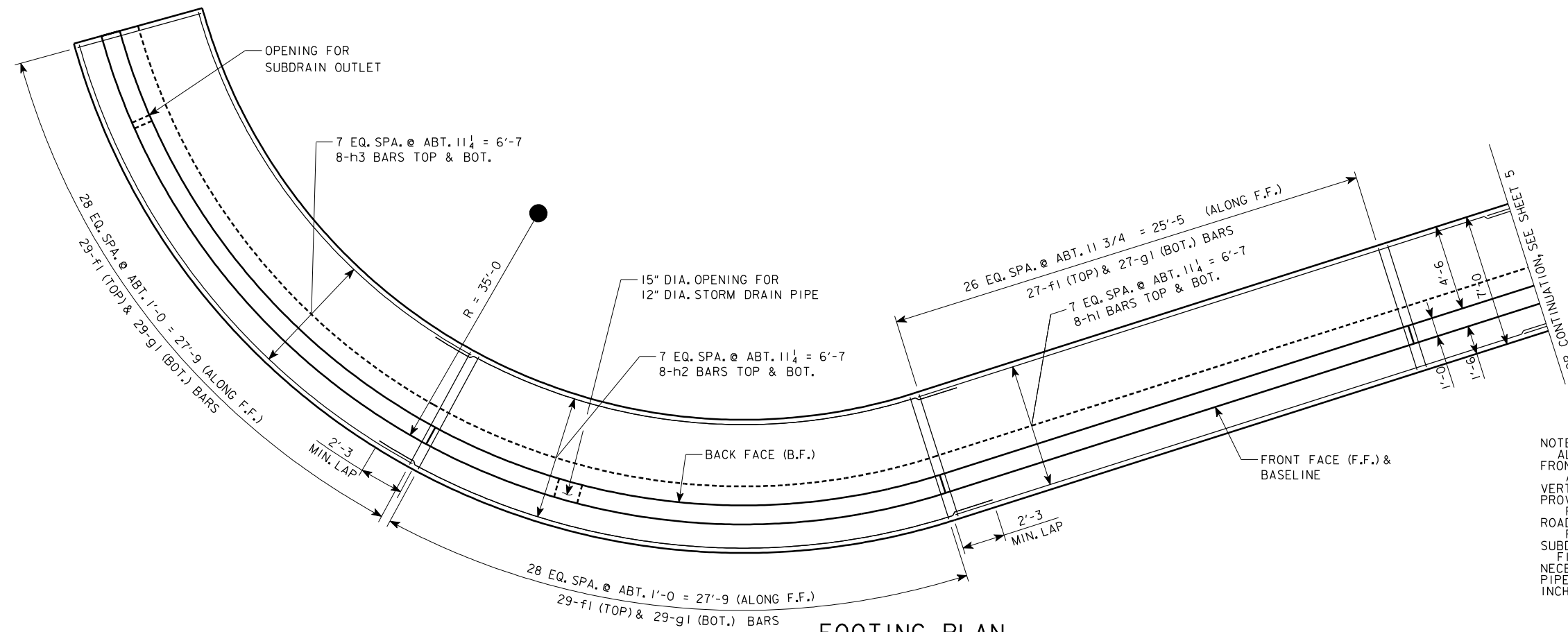


LONGITUDINAL SECTION ALONG \perp WALL SW

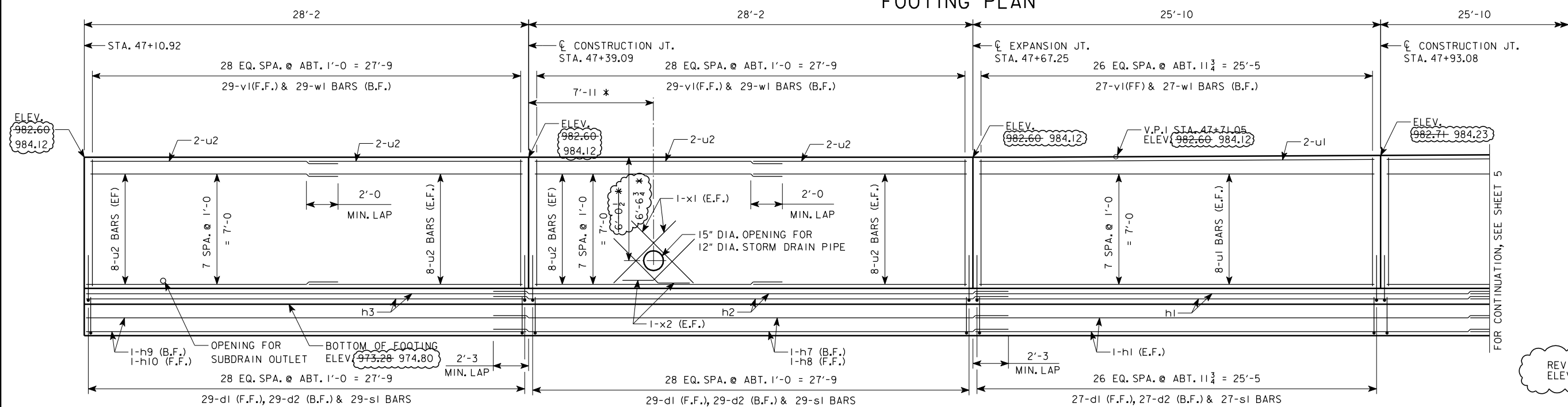
NOTE:
FORMLINER PLACED ON WALL FRONT FACE FROM TOP OF WALL TO WITHIN APPROXIMATELY TWO INCHES FROM TOP OF FOOTING FROM BEGIN OF WALL TO END OF WALL (TYP.).

REVISED 11-20-07; WALL ELEVATIONS REVISED

257'-11 x VAR, 64'-0 x 7'-11, 59'-10 x 7'-11,
279'-11 x VAR, 74'-0 x 7'-11, 66'-2 x 7'-11
CONCRETE RETAINING WALLS
RETAINING WALL ELEVATIONS
STA. 40176+95.25 (24TH STREET) JUNE, 2007
POTTAWATTAMIE COUNTY
IOWA DEPARTMENT OF TRANSPORTATION - HIGHWAY DIVISION
DESIGN SHEET NO. 3 OF 18 FILE NO. 30169 DESIGN NO. 708



NOTES:
 ALL REINFORCING DIMENSIONED ALONG FRONT FACE OF WALL & WALL BASELINE. ADJUST SPACING OF HORIZONTAL AND VERTICAL BARS AROUND PIPE OPENINGS. PROVIDE 2" MIN. CLR. AROUND OPENINGS. FOR STORM DRAIN PIPE DETAILS, SEE ROADWAY PLANS. FOR SUBDRAIN OUTLET DETAILS, SEE SUBDRAIN DETAILS SHEET. FIELD BEND d1 AND d2 BARS AS NECESSARY TO CLEAR STORM DRAIN PIPE OPENING BY A MINIMUM OF 2 INCHES.



REVISED 11-20-07; WALL ELEVATIONS REVISED

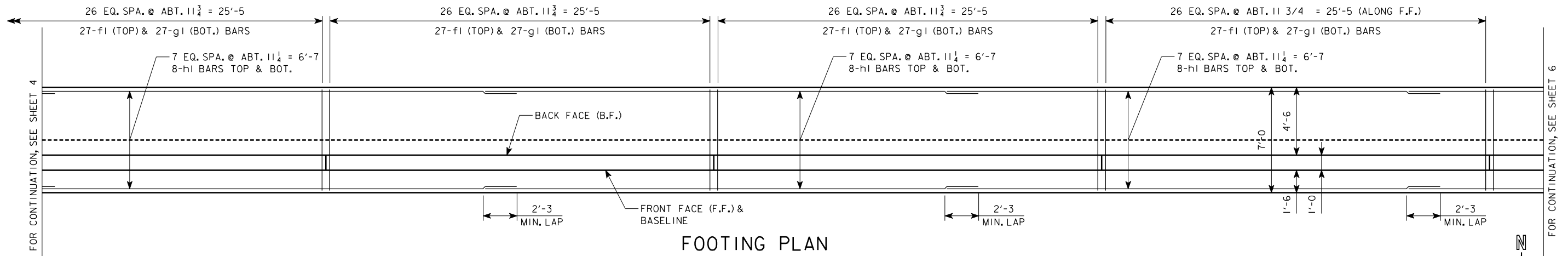
DEVELOPED ELEVATION

* COORDINATE LOCATION AND ELEVATIONS OF STORM DRAIN PIPE WITH ROADWAY SHEETS.

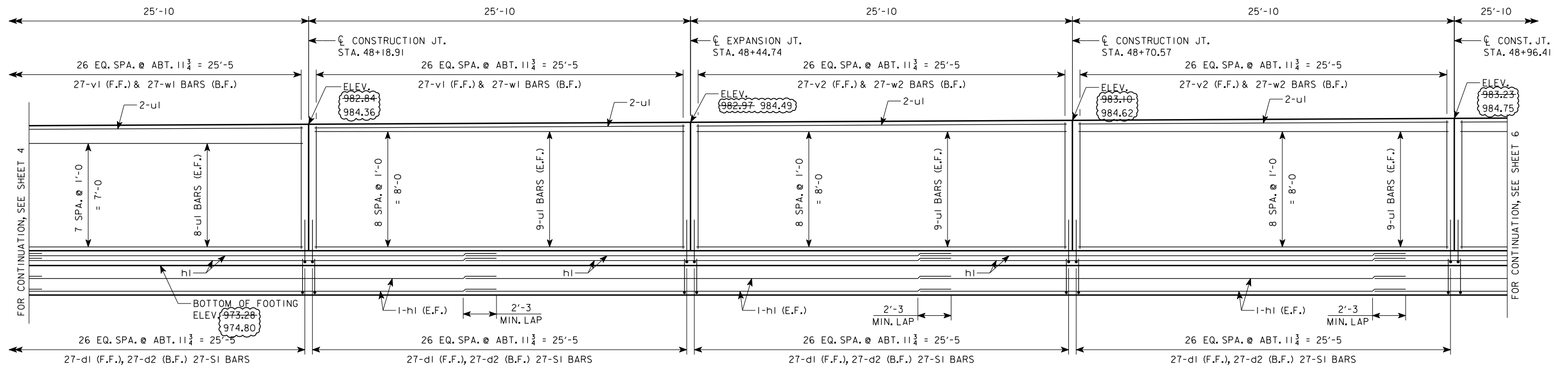
NOTES:
 ALL EXPOSED CORNERS 90° OR SHARPER ARE TO BE FILLETED WITH A 3/8" INCH DRESSED AND BEVELED STRIP.
 MINIMUM CLEAR DISTANCE FROM FACE OF CONCRETE TO NEAR REINFORCING BAR IS TO BE 2 INCHES UNLESS OTHERWISE NOTED OR SHOWN.
 REINFORCING STEEL IS TO BE SECURELY WIRED IN PLACE BEFORE CONCRETE IS POURED.

BACKFILL BEHIND AND BELOW THE RETAINING WALL IS TO BE AS SHOWN ON THE SUBDRAIN DETAIL SHEET. THE REMAINDER OF RETAINING WALL EXCAVATION IS TO BE BACKFILLED WITH SOIL.
 ALL ELEVATIONS AND STATIONS ARE IN FEET.
 B.F. = BACK FACE
 E.F. = EACH FACE
 F.F. = FRONT FACE

257'-11 x VAR, 64'-0 x 7'-11, 59'-10 x 7'-11,
 279'-11 x VAR, 74'-0 x 7'-11, 66'-2 x 7'-11
 CONCRETE RETAINING WALLS
 WALL NO DETAILS
 STA. 40176+95.25 (24TH STREET) JUNE, 2007
 POTTAWATTAMIE COUNTY
 IOWA DEPARTMENT OF TRANSPORTATION - HIGHWAY DIVISION
 DESIGN SHEET NO. 4 OF 18 FILE NO. 30169 DESIGN NO. 708



FOOTING PLAN

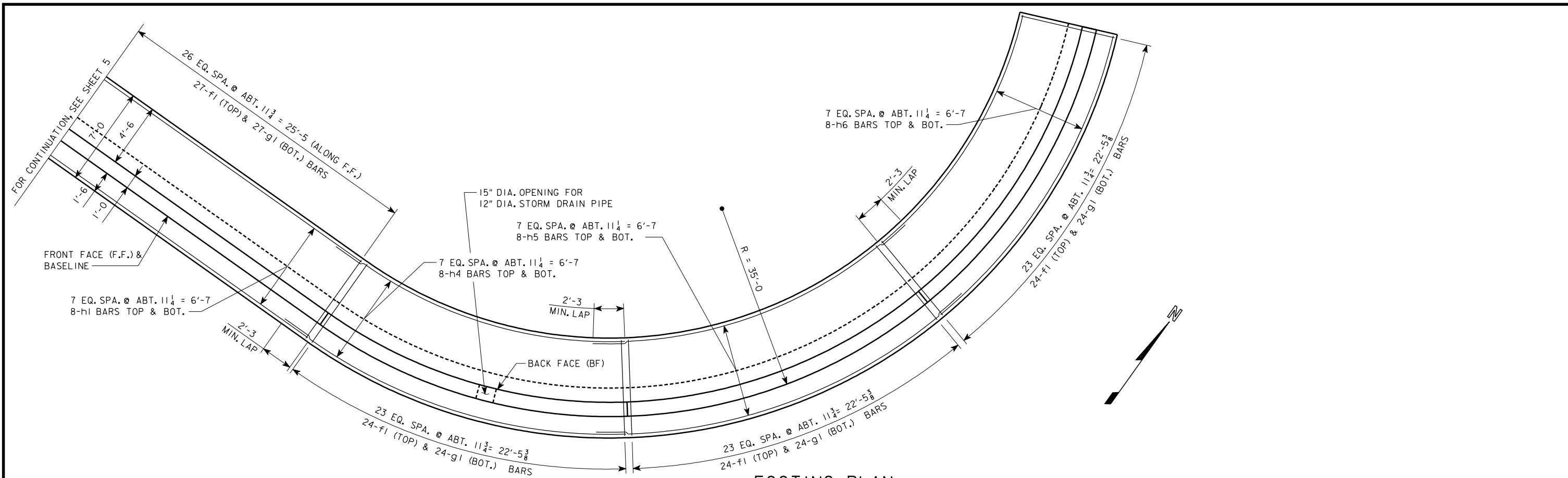


DEVELOPED ELEVATION

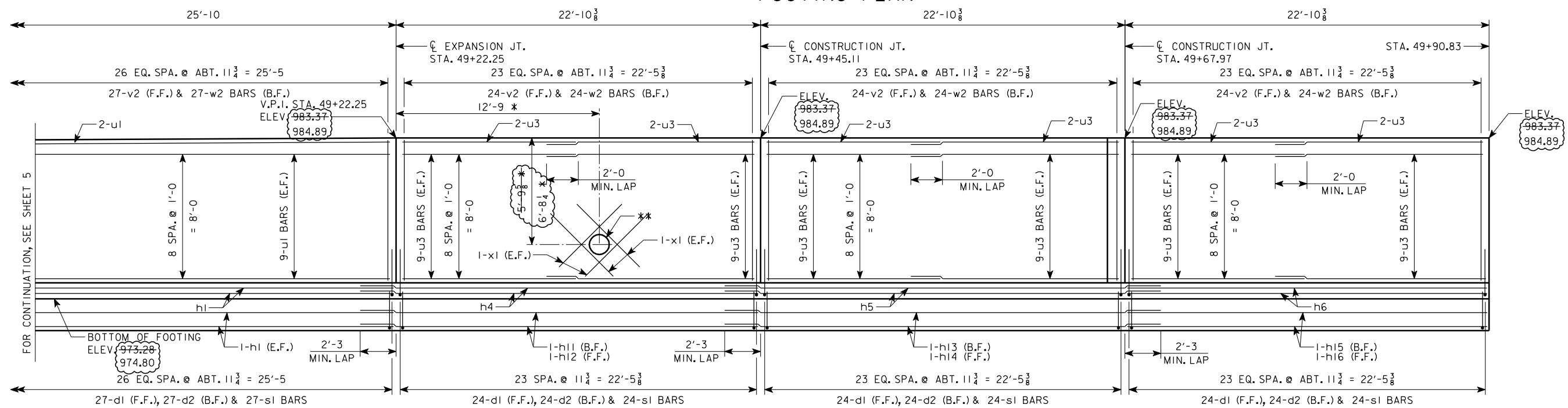
REVISED 11-20-07; WALL ELEVATIONS REVISED

NOTE: ALL REINFORCING DIMENSIONED ALONG FRONT FACE OF WALL & WALL BASELINE.

257'-11 x VAR, 64'-0 x 7'-11, 59'-10 x 7'-11,
 279'-11 x VAR, 74'-0 x 7'-11, 66'-2 x 7'-11
 CONCRETE RETAINING WALLS
 WALL NO DETAILS
 STA. 40176+95.25 (24TH STREET) JUNE, 2007
 POTTAWATTAMIE COUNTY
 IOWA DEPARTMENT OF TRANSPORTATION - HIGHWAY DIVISION
 DESIGN SHEET NO. 5 OF 18 FILE NO. 30169 DESIGN NO. 708



FOOTING PLAN



DEVELOPED ELEVATION

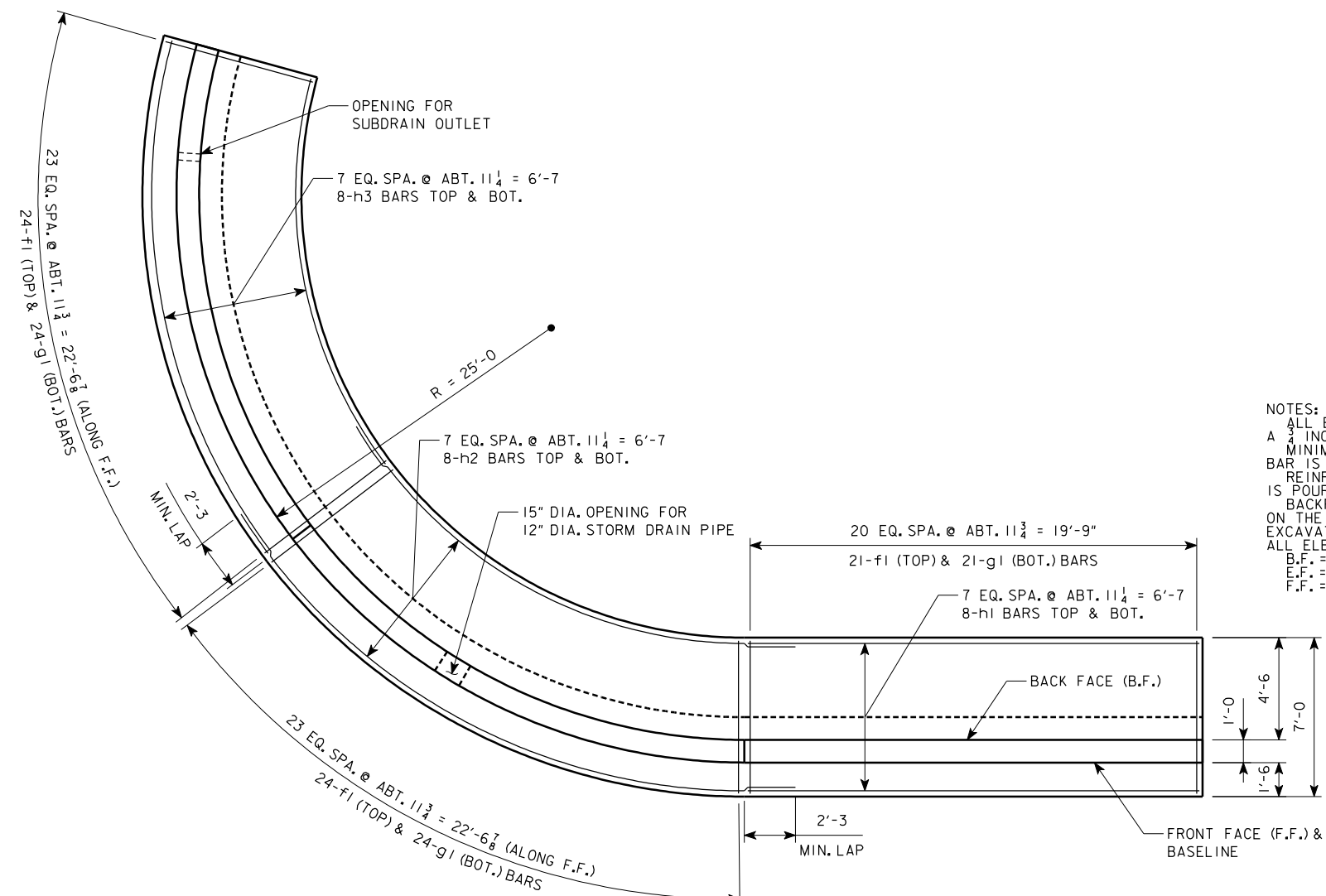
** 15" DIA. OPENING FOR 12" DIA. STORM DRAIN PIPE.

* COORDINATE LOCATION AND ELEVATIONS OF STORM DRAIN PIPE WITH ROADWAY SHEETS.

REVISED 11-20-07; WALL ELEVATIONS REVISED

NOTES:
 ALL REINFORCING DIMENSIONED ALONG FRONT FACE OF WALL & WALL BASELINE.
 ADJUST SPACING OF HORIZONTAL AND VERTICAL BARS AROUND PIPE OPENING. PROVIDE 2" MIN. CLR. AROUND OPENING.
 FOR STORM DRAIN PIPE DETAILS, SEE ROADWAY PLANS.
 FIELD BEND d1 AND d2 BARS AS NECESSARY TO CLEAR STORM DRAIN PIPE OPENING BY A MINIMUM OF 2 INCHES.

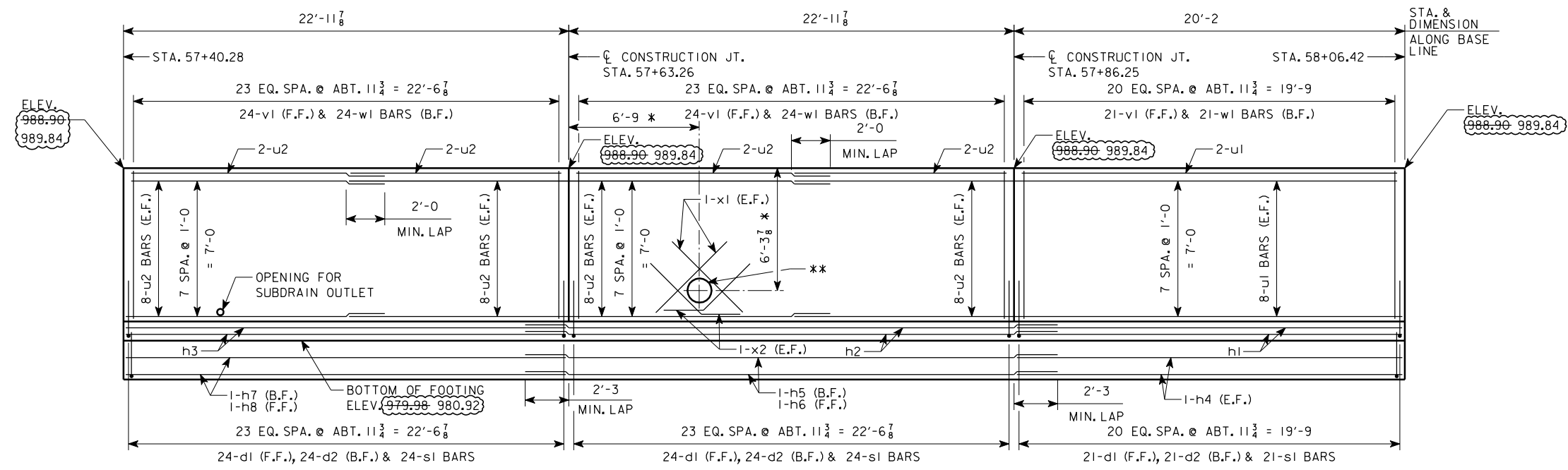
257'-11 x VAR, 64'-0 x 7'-11, 59'-10 x 7'-11,
 279'-11 x VAR, 74'-0 x 7'-11, 66'-2 x 7'-11
CONCRETE RETAINING WALLS
WALL NO DETAILS
 STA. 40176+95.25 (24TH STREET) JUNE, 2007
POTTAWATTAMIE COUNTY
 IOWA DEPARTMENT OF TRANSPORTATION - HIGHWAY DIVISION
 DESIGN SHEET NO. 6 OF 18 FILE NO. 30169 DESIGN NO. 708



NOTES:
 ALL EXPOSED CORNERS 90° OR SHARPER ARE TO BE FILLETED WITH A 3/4" INCH DRESSED AND BEVELED STRIP.
 MINIMUM CLEAR DISTANCE FROM FACE OF CONCRETE TO NEAR REINFORCING BAR IS TO BE 2 INCHES UNLESS OTHERWISE NOTED OR SHOWN.
 REINFORCING STEEL IS TO BE SECURELY WIRED IN PLACE BEFORE CONCRETE IS POURED.
 BACKFILL BEHIND AND BELOW THE RETAINING WALL IS TO BE AS SHOWN ON THE SUBDRAIN DETAIL SHEET. THE REMAINDER OF RETAINING WALL EXCAVATION IS TO BE BACKFILLED WITH SOIL.
 ALL ELEVATIONS AND STATIONS ARE IN FEET.
 B.F. = BACK FACE
 E.F. = EACH FACE
 F.F. = FRONT FACE

NOTES:
 ALL REINFORCING DIMENSIONED ALONG FRONT FACE OF WALL & WALL BASELINE.
 ADJUST SPACING OF HORIZONTAL AND VERTICAL BARS AROUND PIPE OPENINGS. PROVIDE 2" MIN. CLR. AROUND OPENINGS.
 FOR STORM DRAIN PIPE DETAILS, SEE ROADWAY PLANS.
 FOR SUBDRAIN OUTLET DETAILS, SEE SUBDRAIN DETAILS SHEET.
 FIELD BEND d1 AND d2 BARS AS NECESSARY TO CLEAR STORM DRAIN PIPE OPENING BY A MINIMUM OF 2 INCHES.

FOOTING PLAN

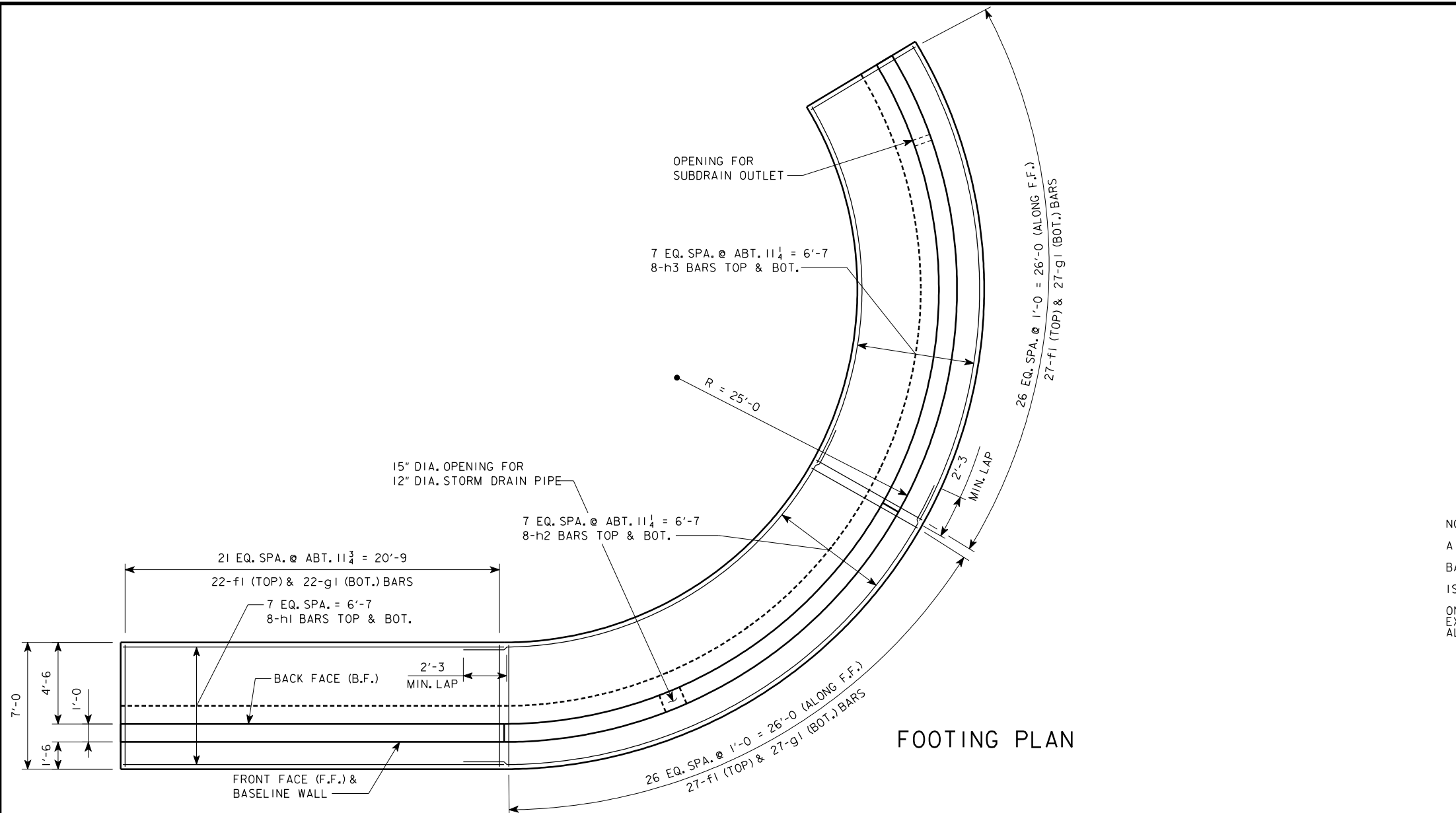


DEVELOPED ELEVATION

* COORDINATE LOCATION AND ELEVATIONS OF STORM DRAIN PIPE WITH ROADWAY SHEETS.
 ** 15" DIA. OPENING FOR 12" DIA. STORM DRAIN PIPE

REVISED 11-20-07; WALL ELEVATIONS REVISED

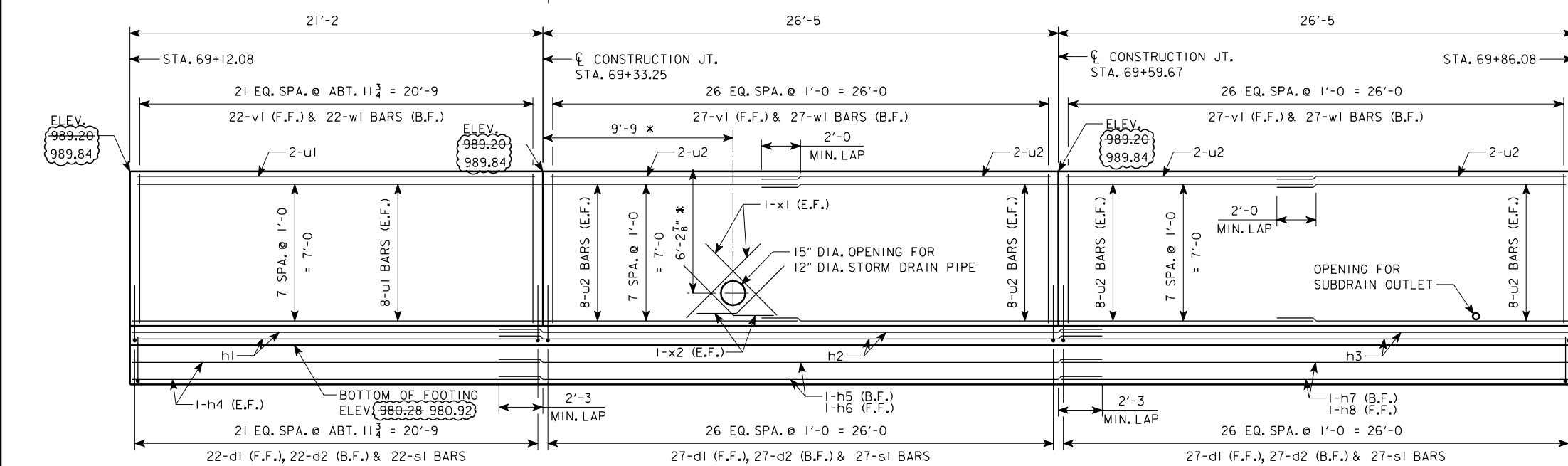
257'-11 x VAR, 64'-0 x 7'-11, 59'-10 x 7'-11,
 279'-11 x VAR, 74'-0 x 7'-11, 66'-2 x 7'-11
 CONCRETE RETAINING WALLS
 NW WALL PLAN & ELEVATION
 STA. 40176+95.25 (24TH STREET) JUNE, 2007
 POTTAWATTAMIE COUNTY
 IOWA DEPARTMENT OF TRANSPORTATION - HIGHWAY DIVISION
 DESIGN SHEET NO. 7 OF 18 FILE NO. 30169 DESIGN NO. 708



FOOTING PLAN

NOTES:
 ALL EXPOSED CORNERS 90° OR SHARPER ARE TO BE FILLETED WITH A 3/4 INCH DRESSED AND BEVELED STRIP.
 MINIMUM CLEAR DISTANCE FROM FACE OF CONCRETE TO NEAR REINFORCING BAR IS TO BE 2 INCHES UNLESS OTHERWISE NOTED OR SHOWN.
 REINFORCING STEEL IS TO BE SECURELY WIRED IN PLACE BEFORE CONCRETE IS POURED.
 BACKFILL BEHIND AND BELOW THE RETAINING WALL IS TO BE AS SHOWN ON THE SUBDRAIN DETAIL SHEET. THE REMAINDER OF RETAINING WALL EXCAVATION IS TO BE BACKFILLED WITH SOIL.
 ALL ELEVATIONS AND STATIONS ARE IN FEET.
 B.F. = BACK FACE
 E.F. = EACH FACE
 F.F. = FRONT FACE

NOTES:
 ALL REINFORCING DIMENSIONED ALONG FRONT FACE OF WALL & WALL BASELINE.
 ADJUST SPACING OF HORIZONTAL AND VERTICAL BARS AROUND PIPE OPENING. PROVIDE 2" MIN. CLR. AROUND OPENING.
 FOR STORM DRAIN PIPE DETAILS, SEE ROADWAY PLANS.
 FOR SUBDRAIN OUTLET DETAILS, SEE SUBDRAIN DETAILS SHEET.
 FIELD BEND d1 AND d2 BARS AS NECESSARY TO CLEAR STORM DRAIN PIPE OPENING BY MINIMUM OF 2 INCHES.

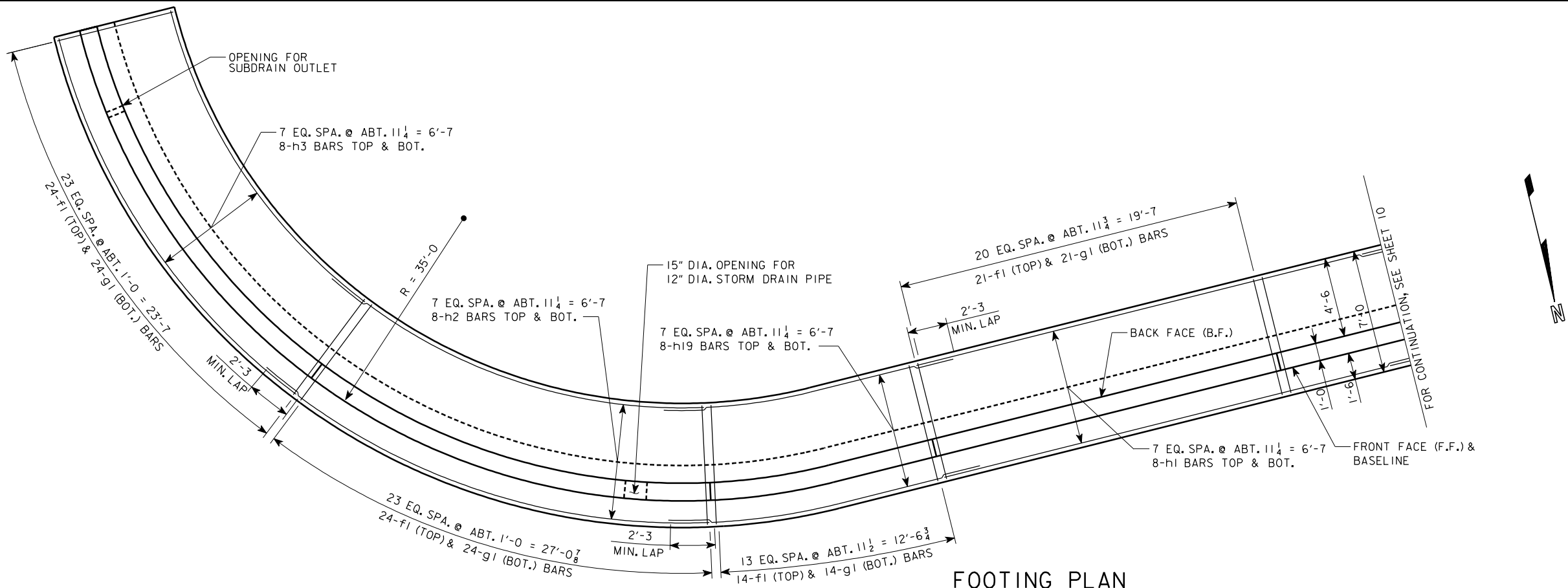


DEVELOPED ELEVATION

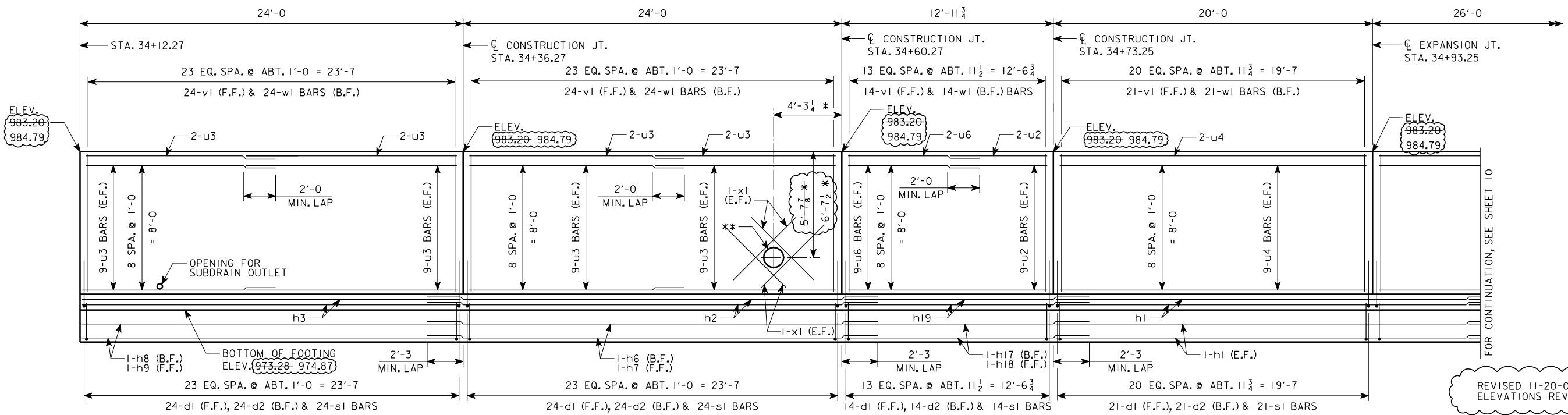
REVISED 11-20-07; WALL ELEVATIONS REVISED

257'-11 x VAR, 64'-0 x 7'-11, 59'-10 x 7'-11,
 279'-11 x VAR, 74'-0 x 7'-11, 66'-2 x 7'-11
CONCRETE RETAINING WALLS
NE WALL PLAN & ELEVATION
 STA. 40176+95.25 (24TH STREET) JUNE, 2007
POTTAWATTAMIE COUNTY
 IOWA DEPARTMENT OF TRANSPORTATION - HIGHWAY DIVISION
 DESIGN SHEET NO. 8 OF 18 FILE NO. 30169 DESIGN NO. 708

* COORDINATE LOCATION AND ELEVATIONS OF STORM DRAIN PIPE WITH ROADWAY SHEETS.



FOOTING PLAN



DEVELOPED ELEVATION

NOTES:
 ALL REINFORCING DIMENSIONED ALONG FRONT FACE OF WALL & WALL BASELINE. ADJUST SPACING OF HORIZONTAL AND VERTICAL BARS AROUND PIPE OPENINGS. PROVIDE 2" MIN. CLR. AROUND OPENINGS. FOR STORM DRAIN PIPE DETAILS, SEE ROADWAY PLANS. FOR SUBDRAIN OUTLET DETAILS, SEE SUBDRAIN DETAILS SHEET.

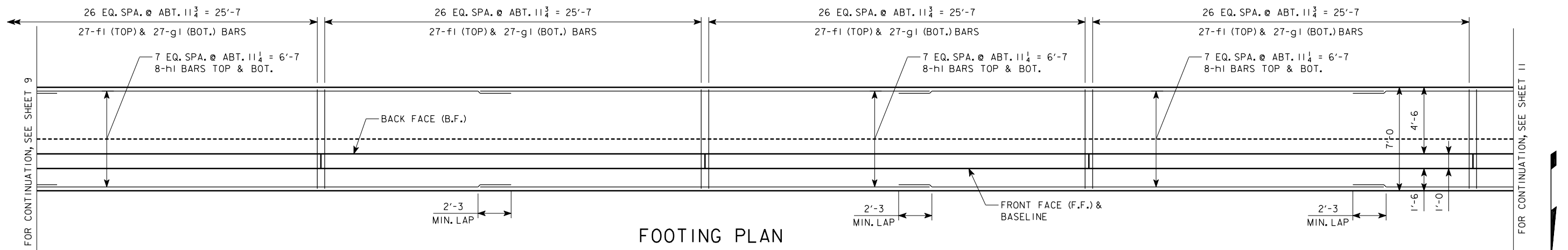
NOTES:
 ALL EXPOSED CORNERS 90° OR SHARPER ARE TO BE FILLETED WITH A 3/8" INCH DRESSED AND BEVELED STRIP. MINIMUM CLEAR DISTANCE FROM FACE OF CONCRETE TO NEAR REINFORCING BAR IS TO BE 2 INCHES UNLESS OTHERWISE NOTED OR SHOWN. REINFORCING STEEL IS TO BE SECURELY WIRED IN PLACE BEFORE CONCRETE IS POURED.

* COORDINATE LOCATION AND ELEVATIONS OF STORM DRAIN PIPE WITH ROADWAY SHEETS.

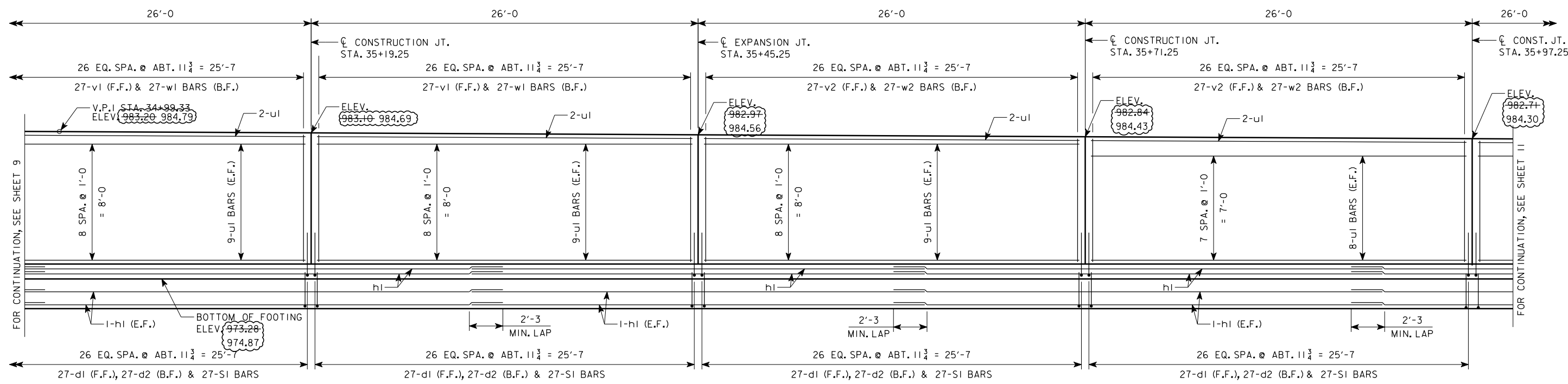
** 15" DIA. OPENING FOR 12" DIA. STORM DRAIN PIPE

BACKFILL BEHIND AND BELOW THE RETAINING WALL IS TO BE AS SHOWN ON THE SUBDRAIN DETAIL SHEET. THE REMAINDER OF RETAINING WALL EXCAVATION IS TO BE BACKFILLED WITH SOIL. ALL ELEVATIONS AND STATIONS ARE IN FEET. B.F. = BACK FACE E.F. = EACH FACE F.F. = FRONT FACE

257'-11 x VAR, 64'-0 x 7'-11, 59'-10 x 7'-11, 279'-11 x VAR, 74'-0 x 7'-11, 66'-2 x 7'-11
CONCRETE RETAINING WALLS
WALL SO DETAILS
 STA. 40176+95.25 (24TH STREET) JUNE, 2007
POTTAWATTAMIE COUNTY
 IOWA DEPARTMENT OF TRANSPORTATION - HIGHWAY DIVISION
 DESIGN SHEET NO. 9 OF 18 FILE NO. 30169 DESIGN NO. 708



FOOTING PLAN

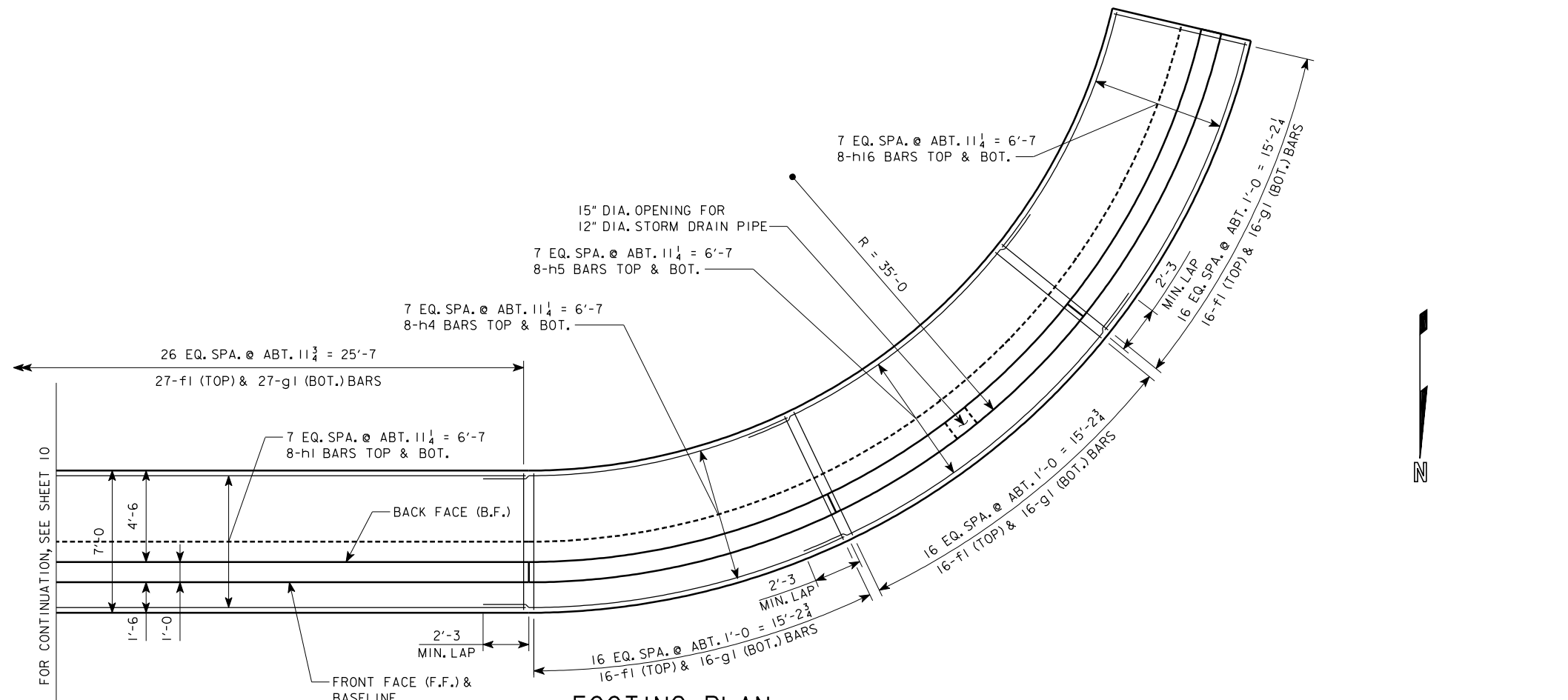


DEVELOPED ELEVATION

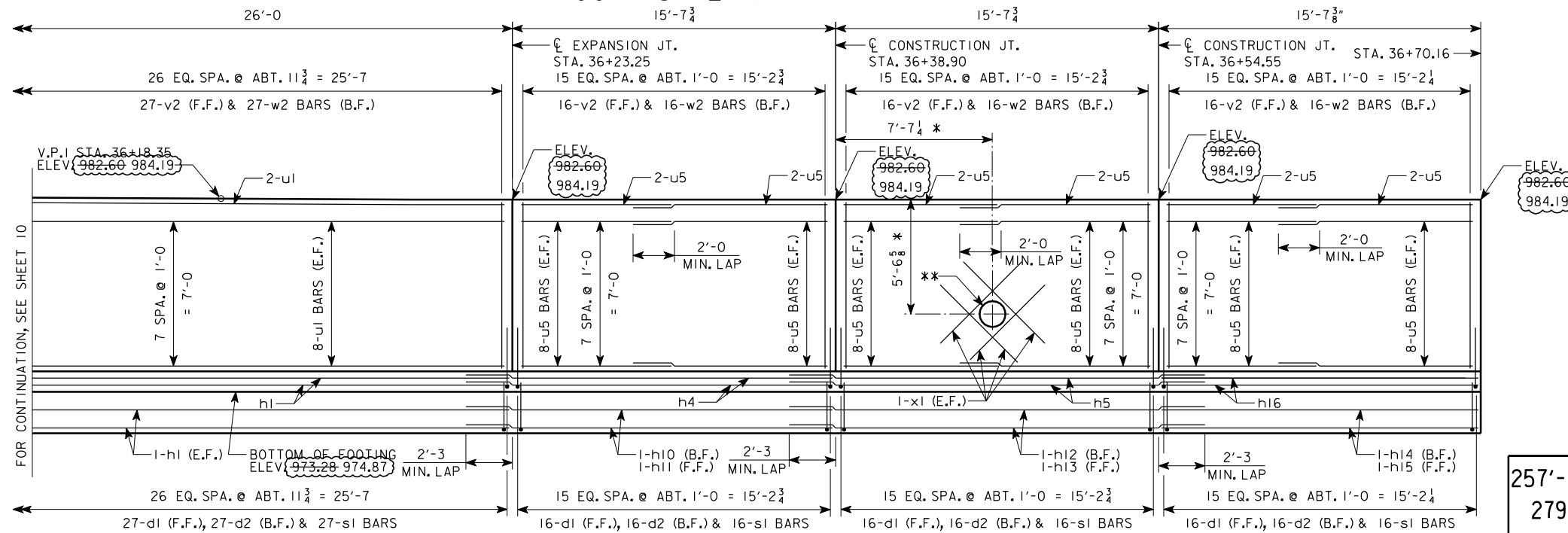
REVISED 11-20-07; WALL ELEVATIONS REVISED

NOTE:
 ALL REINFORCING DIMENSIONED ALONG FRONT FACE OF WALL & WALL BASELINE.
 B.F. = BACK FACE
 E.F. = EACH FACE
 F.F. = FRONT FACE

257'-11 x VAR, 64'-0 x 7'-11, 59'-10 x 7'-11,
 279'-11 x VAR, 74'-0 x 7'-11, 66'-2 x 7'-11
CONCRETE RETAINING WALLS
WALL SO DETAILS
 STA. 40176+95.25 (24TH STREET) JUNE, 2007
POTTAWATTAMIE COUNTY
 IOWA DEPARTMENT OF TRANSPORTATION - HIGHWAY DIVISION
 DESIGN SHEET NO. 10 OF 18 FILE NO. 30169 DESIGN NO. 708



FOOTING PLAN

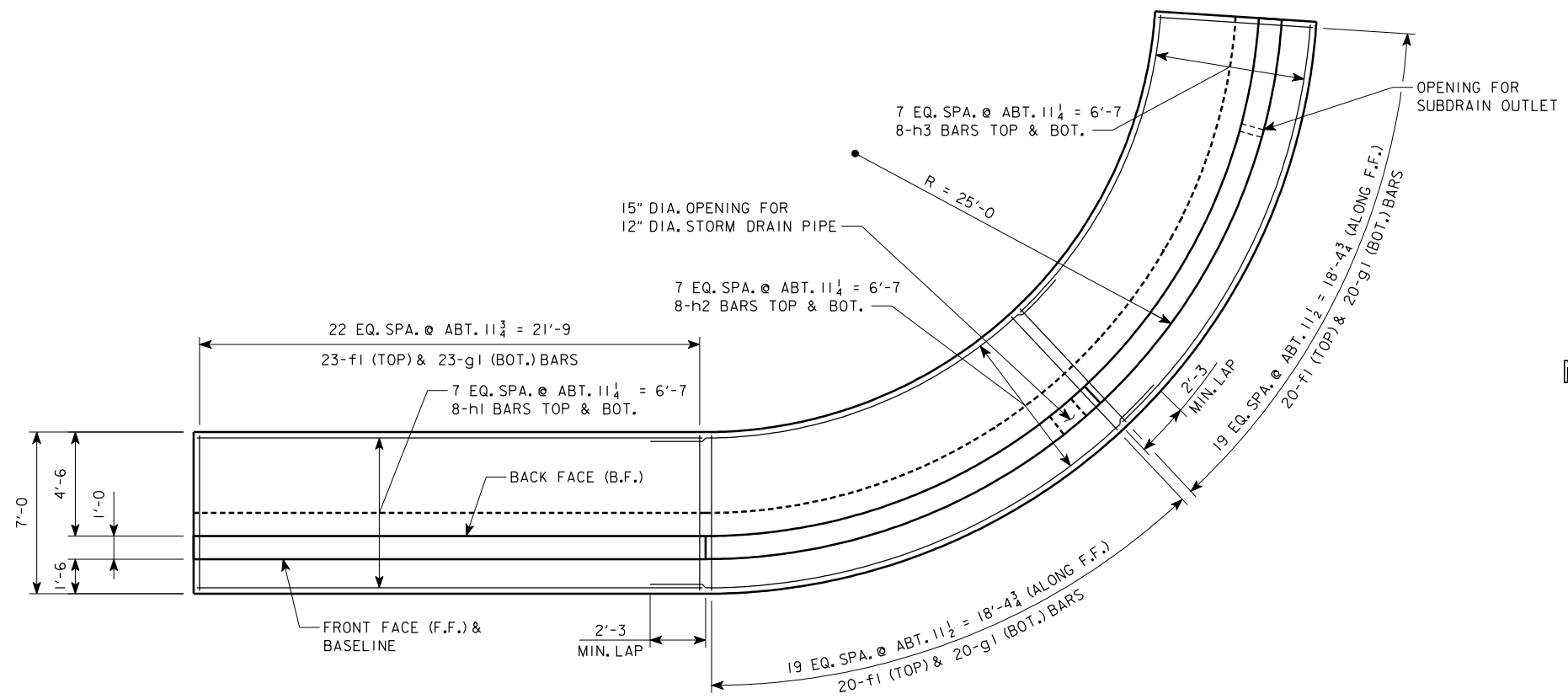


DEVELOPED ELEVATION

NOTES:
 ALL REINFORCING DIMENSIONED ALONG FRONT FACE OF WALL & WALL BASELINE. ADJUST SPACING OF HORIZONTAL AND VERTICAL BARS AROUND PIPE OPENING. PROVIDE 2" MIN. CLR. AROUND OPENING. FOR STORM DRAIN PIPE DETAILS, SEE ROADWAY PLANS. FIELD BEND d1 AND d2 BARS AS NECESSARY TO CLEAR DRAIN PIPE OPENING BY A MINIMUM OF 2 INCHES. FOR SUBDRAIN OUTLET DETAILS, SEE SUBDRAIN DETAILS SHEET.
 B.F. = BACK FACE
 E.F. = EACH FACE
 F.F. = FRONT FACE

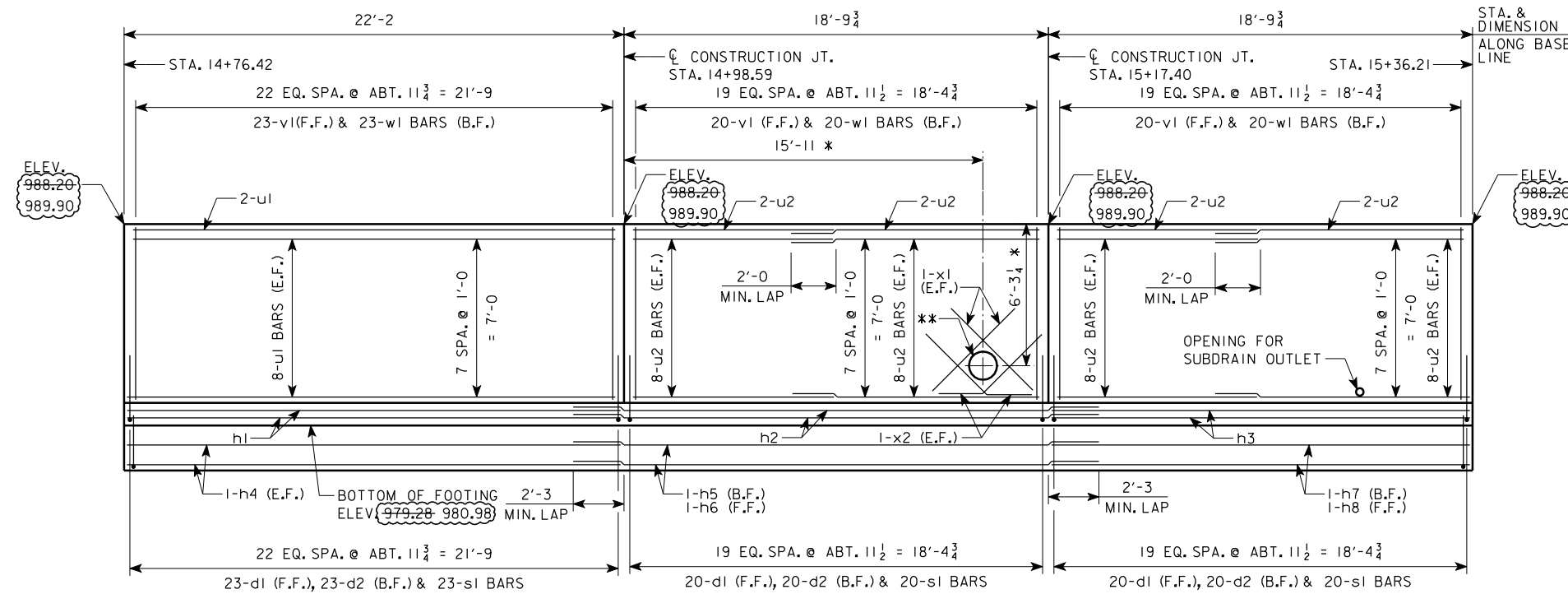
REVISED 11-20-07; WALL ELEVATIONS REVISED

257'-11 x VAR, 64'-0 x 7'-11, 59'-10 x 7'-11,
 279'-11 x VAR, 74'-0 x 7'-11, 66'-2 x 7'-11
CONCRETE RETAINING WALLS
WALL SO DETAILS
 STA. 40176+95.25 (24TH STREET) JUNE, 2007
POTTAWATTAMIE COUNTY
 IOWA DEPARTMENT OF TRANSPORTATION - HIGHWAY DIVISION
 DESIGN SHEET NO. 11 OF 18 FILE NO. 30169 DESIGN NO. 708



FOOTING PLAN

NOTES:
 ALL EXPOSED CORNERS 90° OR SHARPER ARE TO BE FILLETED WITH A 3/4" INCH DRESSED AND BEVELED STRIP.
 MINIMUM CLEAR DISTANCE FROM FACE OF CONCRETE TO NEAR REINFORCING BAR IS TO BE 2 INCHES UNLESS OTHERWISE NOTED OR SHOWN.
 REINFORCING STEEL IS TO BE SECURELY WIRED IN PLACE BEFORE CONCRETE IS POURED.
 BACKFILL BEHIND AND BELOW THE RETAINING WALL IS TO BE AS SHOWN ON THE SUBDRAIN DETAIL SHEET. THE REMAINDER OF RETAINING WALL EXCAVATION IS TO BE BACKFILLED WITH SOIL.
 ALL ELEVATIONS AND STATIONS ARE IN FEET.
 B.F. = BACK FACE
 F.F. = EACH FACE
 F.F. = FRONT FACE



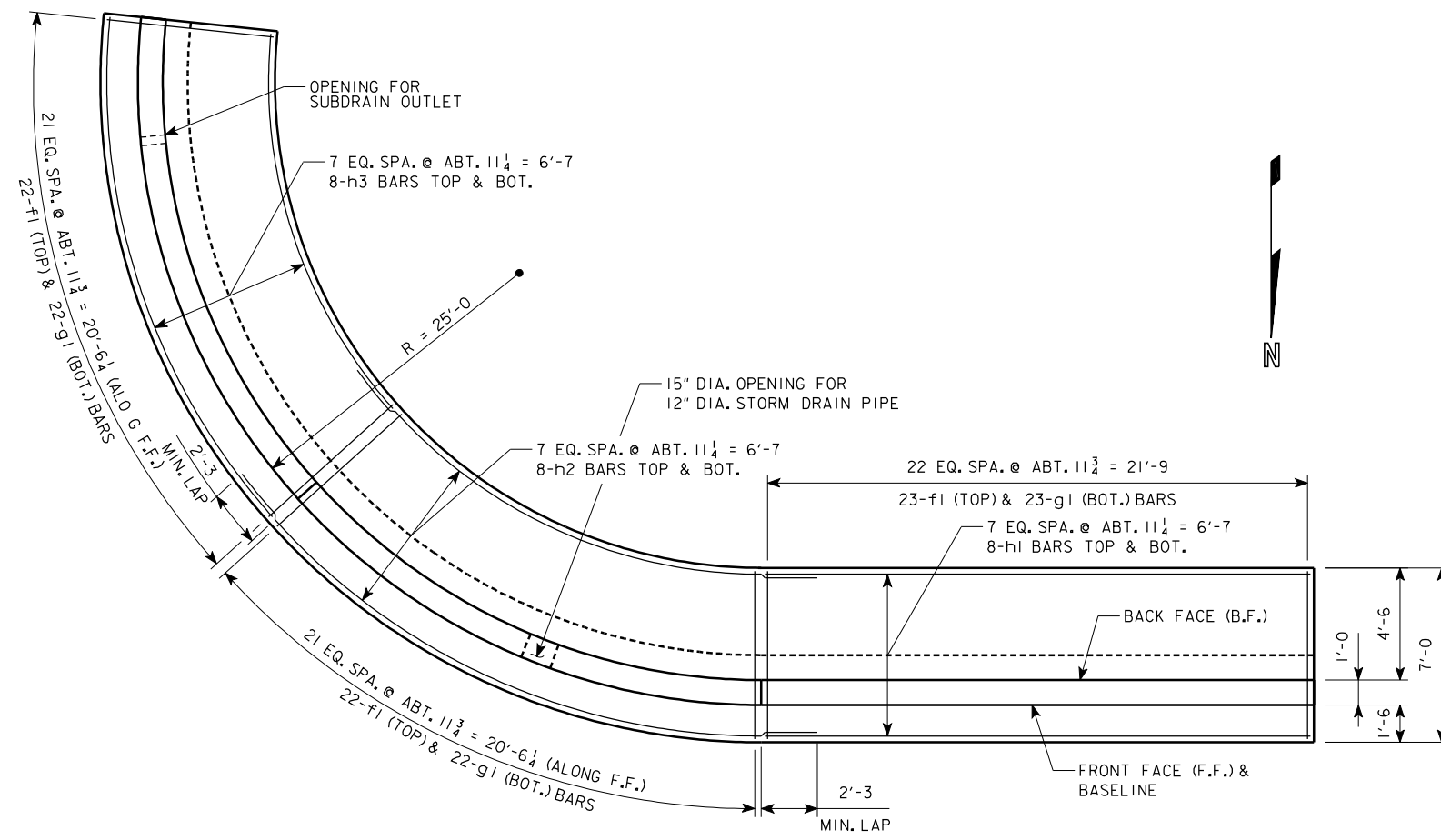
DEVELOPED ELEVATION

NOTES:
 ALL REINFORCING DIMENSIONED ALONG FRONT FACE OF WALL & WALL BASELINE. ADJUST SPACING OF HORIZONTAL AND VERTICAL BARS AROUND PIPE OPENINGS. PROVIDE 2" MIN. CLR. AROUND OPENINGS. FOR STORM DRAIN PIPE DETAILS, SEE ROADWAY PLANS. FOR SUBDRAIN OUTLET DETAILS, SEE SUBDRAIN DETAILS SHEET. FIELD BEND d1 AND d2 BARS AS NECESSARY TO CLEAR STORM DRAIN PIPE OPENING BY A MINIMUM OF 2 INCHES.

REVISED 11-20-07; WALL ELEVATIONS REVISED

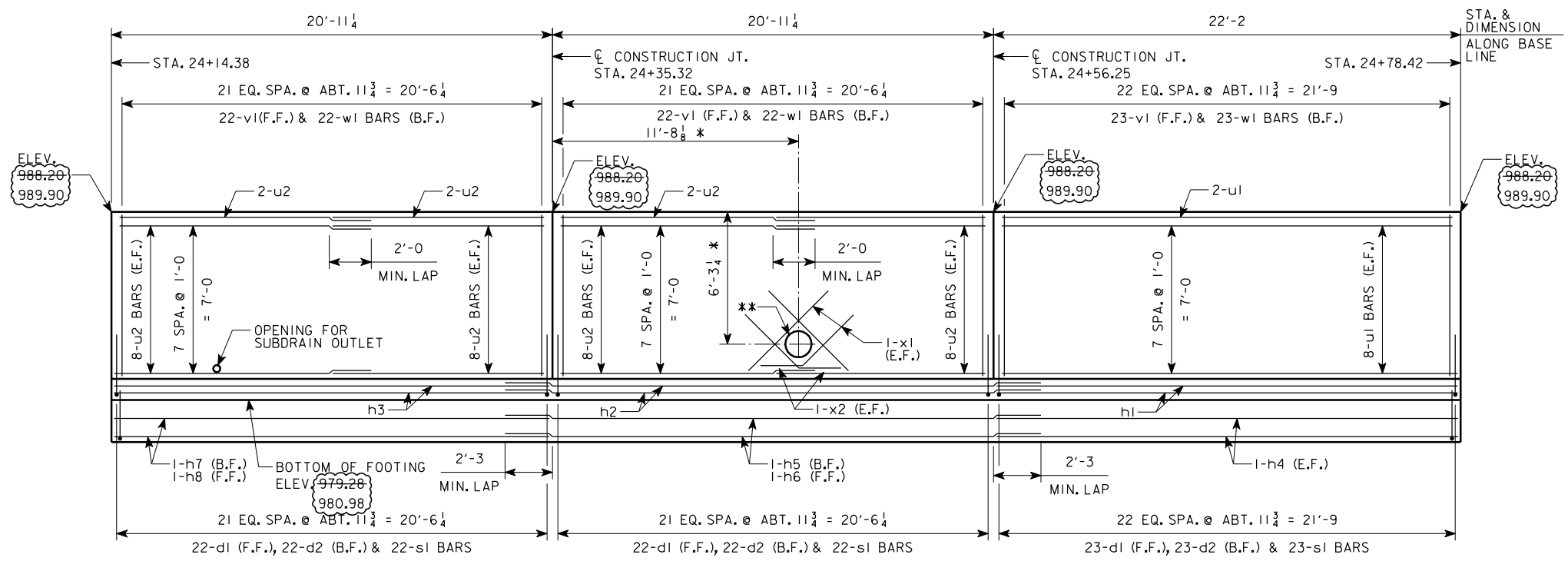
257'-11 x VAR, 64'-0 x 7'-11, 59'-10 x 7'-11,
 279'-11 x VAR, 74'-0 x 7'-11, 66'-2 x 7'-11
CONCRETE RETAINING WALLS
WALL SW DETAILS
 STA. 40176+95.25 (24TH STREET) JUNE, 2007
POTTAWATTAMIE COUNTY
 IOWA DEPARTMENT OF TRANSPORTATION - HIGHWAY DIVISION
 DESIGN SHEET NO. 12 OF 18 FILE NO. 30169 DESIGN NO. 708

* COORDINATE LOCATION AND ELEVATION OF STORM DRAIN PIPE WITH ROADWAY SHEETS.
 ** 15" DIA. OPENING FOR 12" DIA. STORM DRAIN PIPE.



FOOTING PLAN

NOTES:
 ALL EXPOSED CORNERS 90° OR SHARPER ARE TO BE FILLETED WITH A 3/4" INCH DRESSED AND BEVELED STRIP.
 MINIMUM CLEAR DISTANCE FROM FACE OF CONCRETE TO NEAR REINFORCING BAR IS TO BE 2 INCHES UNLESS OTHERWISE NOTED OR SHOWN.
 REINFORCING STEEL IS TO BE SECURELY WIRED IN PLACE BEFORE CONCRETE IS POURED.
 BACKFILL BEHIND AND BELOW THE RETAINING WALL IS TO BE AS SHOWN ON THE SUBDRAIN DETAIL SHEET. THE REMAINDER OF RETAINING WALL EXCAVATION IS TO BE BACKFILLED WITH SOIL.
 ALL ELEVATIONS AND STATIONS ARE IN FEET.
 B.F. = BACK FACE
 E.F. = EACH FACE
 F.F. = FRONT FACE

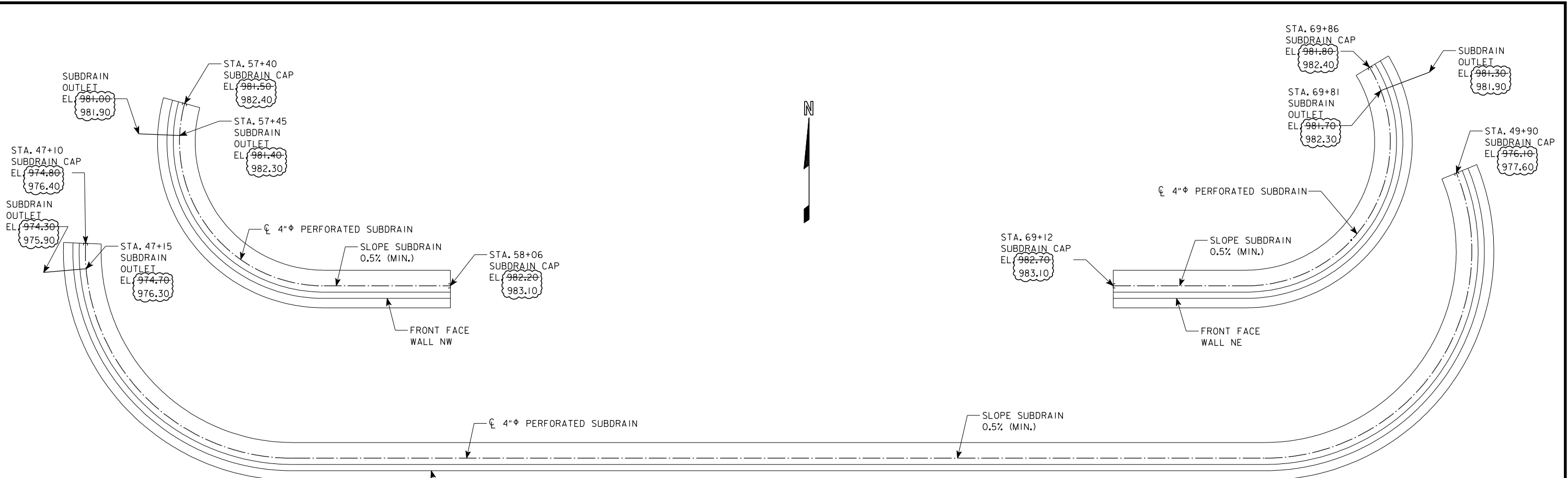


DEVELOPED ELEVATION

NOTES:
 ALL REINFORCING DIMENSIONED ALONG FRONT FACE OF WALL & WALL BASELINE.
 ADJUST SPACING OF HORIZONTAL AND VERTICAL BARS AROUND PIPE OPENINGS. PROVIDE 2" MIN. CLR. AROUND OPENINGS.
 FOR STORM DRAIN PIPE DETAILS, SEE ROADWAY PLANS.
 FOR SUBDRAIN OUTLET DETAILS, SEE SUBDRAIN DETAILS SHEET.
 FIELD BEND d1 AND d2 BARS AS NECESSARY TO CLEAR STORM DRAIN PIPE OPENING BY A MINIMUM OF 2 INCHES.

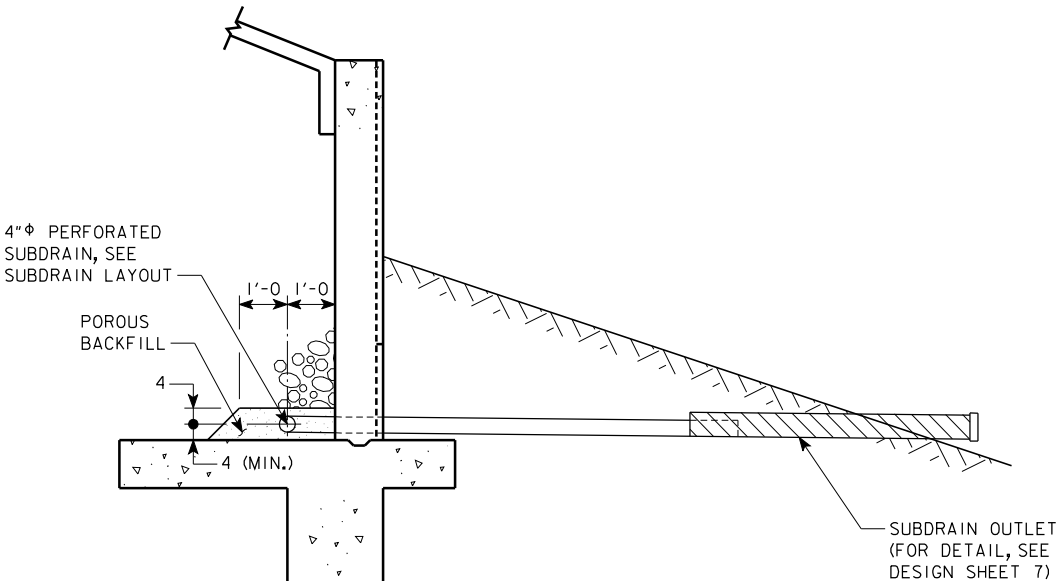
REVISED 11-20-07; WALL ELEVATIONS REVISED

257'-11 x VAR, 64'-0 x 7'-11, 59'-10 x 7'-11,
 279'-11 x VAR, 74'-0 x 7'-11, 66'-2 x 7'-11
CONCRETE RETAINING WALLS
WALL SE DETAILS
 STA. 40176+95.25 (24TH STREET) JUNE, 2007
POTTAWATTAMIE COUNTY
 IOWA DEPARTMENT OF TRANSPORTATION - HIGHWAY DIVISION
 DESIGN SHEET NO. 13 OF 18 FILE NO. 30169 DESIGN NO. 708

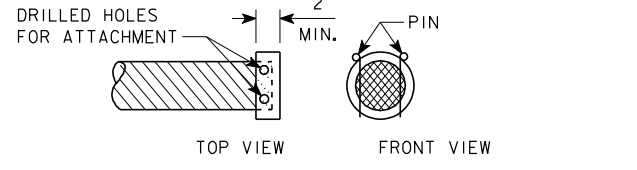
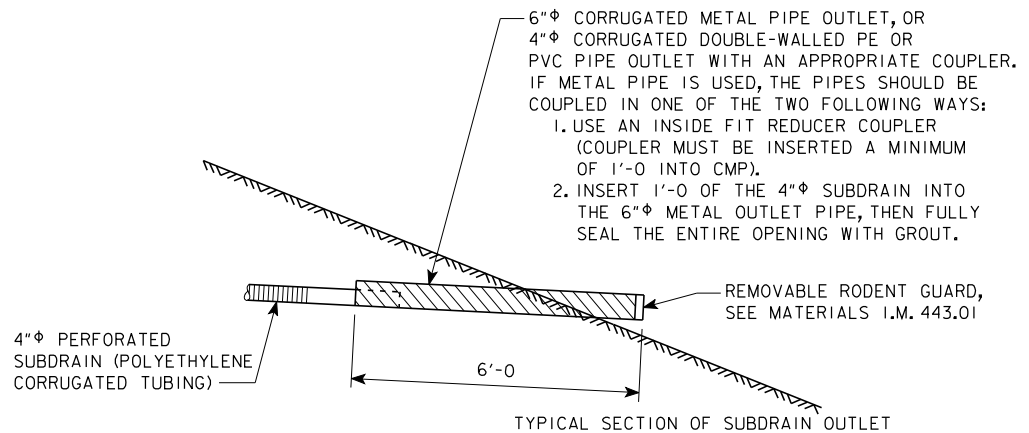


PLAN VIEW WALLS NO, NW & NE
(SHOWING SUBDRAIN LAYOUT, NOT TO SCALE)

NOTE:
SEE ROADWAY PLANS FOR
STORM DRAIN PIPE LOCATION
AND ELEVATIONS. COORDINATE
SUBDRAIN PLACEMENT AND SLOPE
TO DRAIN.



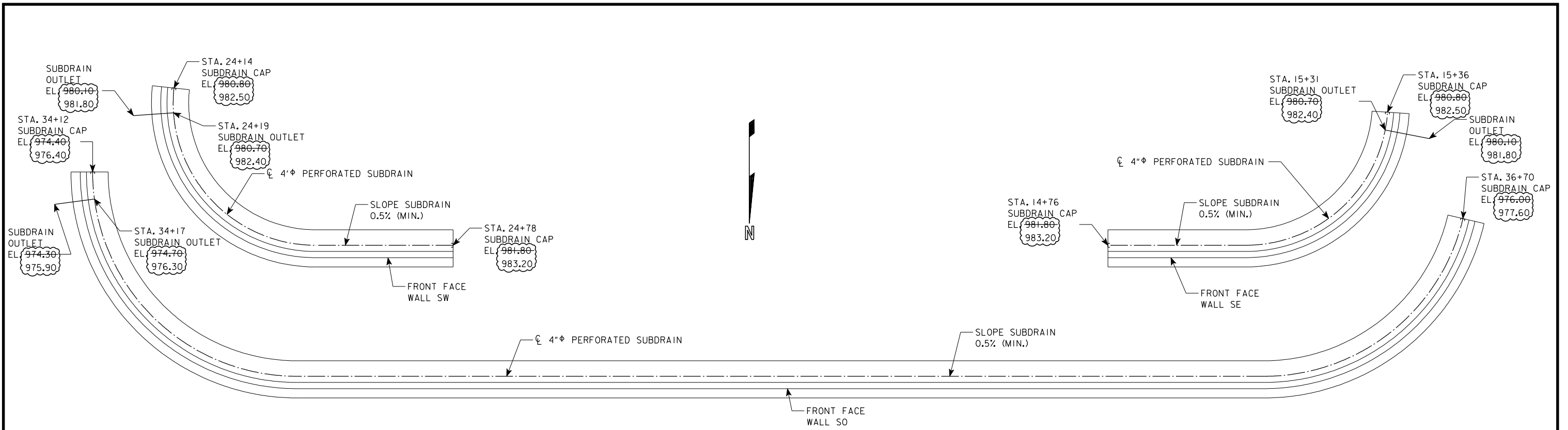
TYPICAL SECTION



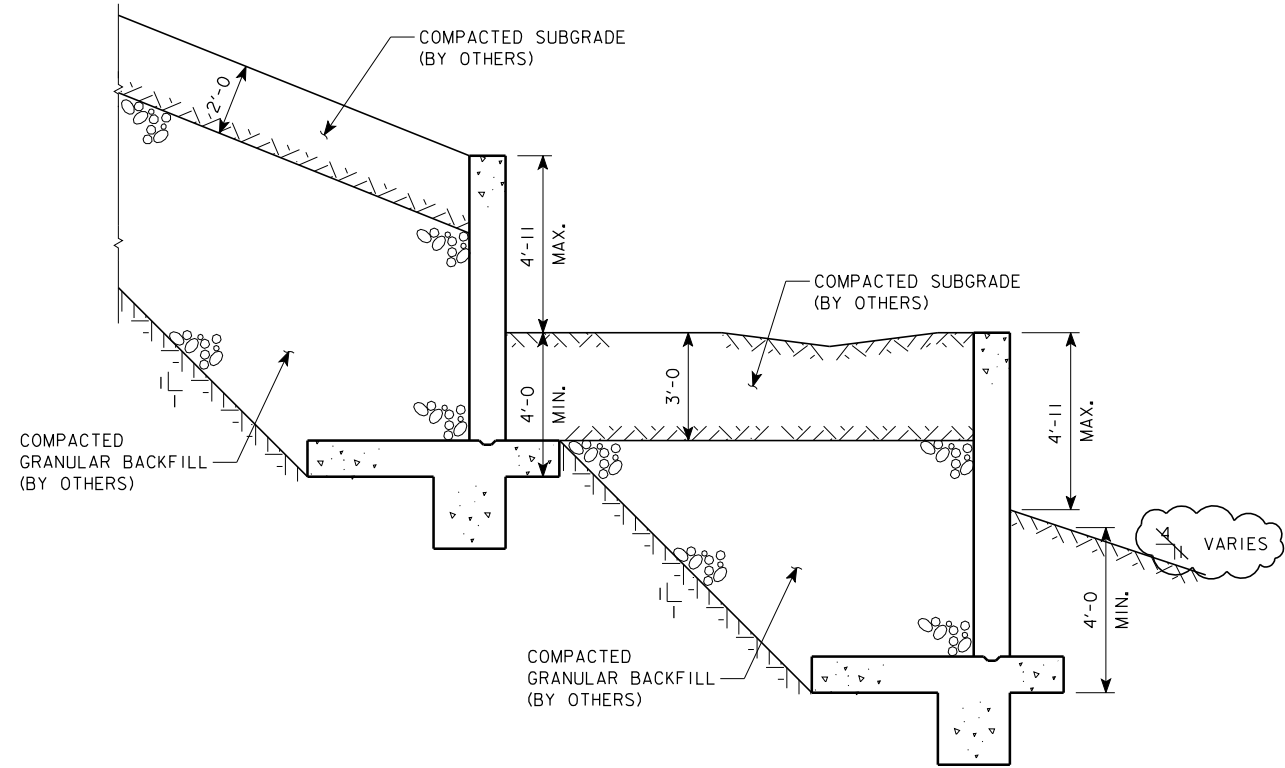
OUTLET DETAILS

REVISED 11-20-07; SUBDRAIN
ELEVATIONS REVISED

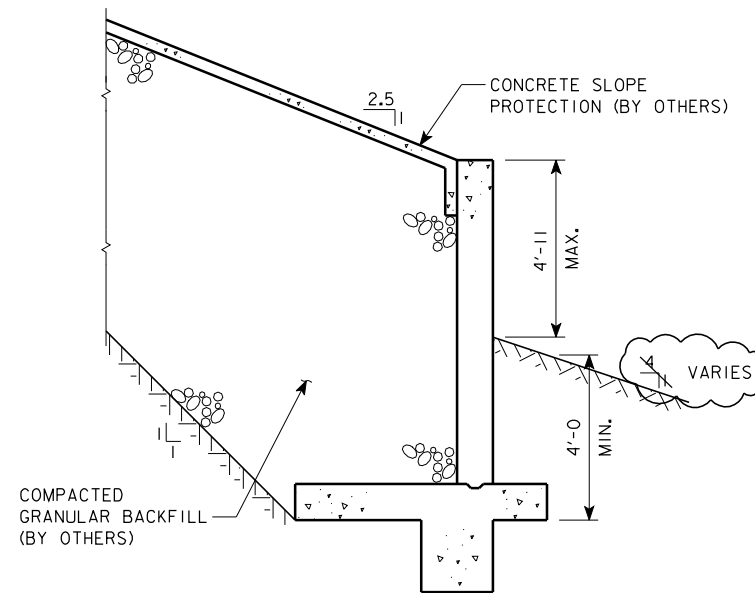
257'-11 x VAR, 64'-0 x 7'-11, 59'-10 x 7'-11,
279'-11 x VAR, 74'-0 x 7'-11, 66'-2 x 7'-11
**CONCRETE RETAINING WALLS
SUBDRAIN DETAILS**
STA. 40176+95.25 (24TH STREET) JUNE, 2007
POTTAWATTAMIE COUNTY
IOWA DEPARTMENT OF TRANSPORTATION - HIGHWAY DIVISION
DESIGN SHEET NO. 17 OF 18 FILE NO. 30169 DESIGN NO. 708



PLAN VIEW WALLS SO, SW & SE
(SHOWING SUBDRAIN LAYOUT, NOT TO SCALE)



TYPICAL SECTION
(OUTSIDE BRIDGE LIMITS)



TYPICAL SECTION
(UNDER BRIDGE)

NOTE:
SEE ROADWAY PLANS FOR
STORM DRAIN PIPE LOCATION
AND ELEVATIONS. COORDINATE
SUBDRAIN PLACEMENT AND SLOPE
TO DRAIN.

REVISED 11-20-07; SUBDRAIN
ELEVATIONS REVISED

257'-11 x VAR, 64'-0 x 7'-11, 59'-10 x 7'-11,
279'-11 x VAR, 74'-0 x 7'-11, 66'-2 x 7'-11
CONCRETE RETAINING WALLS
SUBDRAIN DETAILS

STA. 40176+95.25 (24TH STREET) JUNE, 2007
POTTAWATTAMIE COUNTY
IOWA DEPARTMENT OF TRANSPORTATION - HIGHWAY DIVISION
DESIGN SHEET NO. 18 OF 18 FILE NO. 30169 DESIGN NO. 708