

**IOWA DEPARTMENT OF TRANSPORTATION**

To Office Bridges and Structures

Date July 6, 2005

Attention All Employees

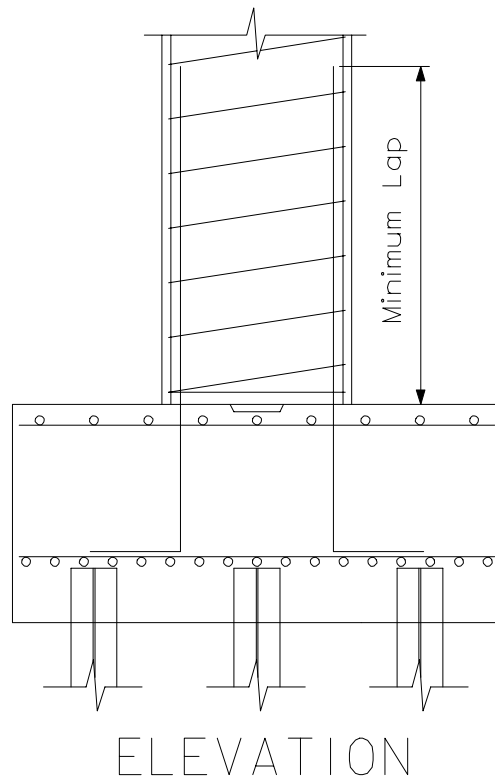
Ref No. 521.1

From Gary Novey

Office Bridges and Structures

Subject Method's Memo No. 75 (End Bar Clearances for Horizontal Construction Joints)

To be consistent in our detailing practices and bar length calculations, please use the following guidelines. When detailing horizontal construction joints, such as joints for column to footing connections or floor to wall connections for box culverts, assume the ends of the vertical bars rest on the construction joint and base the bar length using no clearance. See sample detail below. This policy should be used on projects that have not been detailed.



GAN/dgb/jw