



maximum based on the 2001 edition of the Standard Specification for Structural Supports for Highway Signs, Luminaires and Traffic Signals, and this new dimension will need to be provided to Traffic and Safety for inclusion in their plan set.

## 2. Cantilever Sign Trusses

The review of cantilever sign trusses shall be based on the sign area shown on the plan. If the new sign area is less than or equal to the sign area shown on the plan, then the new sign area may be approved. If the new sign area is greater than the sign area shown on the plan, then the sign area will be limited to the size shown in the tables below. Table 1 applies to cantilevers with a 22" or 24" (559 mm or 610 mm) diameter by 1/2" (12.7 mm) thick steel pipe end support with a maximum height of 27'-0" (8230 mm) and aluminum primary truss members composed of 5 1/2"φ x 5/16" (139 mm x 7.9 mm) and secondary aluminum members 2 1/2"φ x 1/4", 2 1/4"φ x 3/16", 2"φ x 3/16" and 2"φ x 1/4" (63 mm x 6.3 mm, 57 mm x 4.7 mm, 50 mm 4.7 mm, and 50 x 6.3 mm). Table 2 applies to cantilevers with an 18" (457 mm) diameter by 1/2" (12.7 mm) thick steel pipe end support with a maximum height of 27'-0" (8230 mm) and aluminum primary truss members composed of 5 1/2"φ x 5/16" (139 mm x 7.9 mm) and secondary aluminum members 2 1/2"φ x 3/16", 1 3/4"φ x 3/16" and 2"φ x 3/16" (63 mm x 4.7 mm, 44 mm x 4.7 mm, and 50 mm x 4.7 mm).

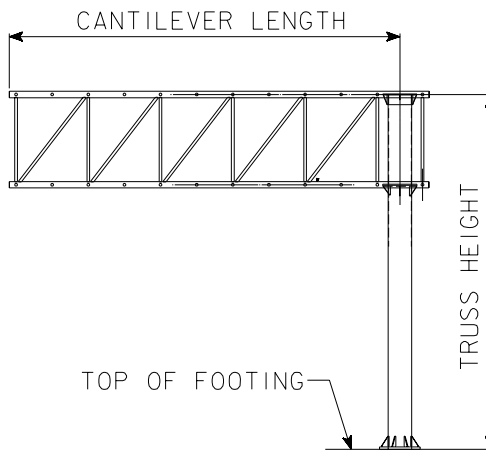


Table No. 1

CANTILEVER LENGTH MAXIMUM	MAXIMUM SIGN HEIGHT	MAXIMUM SIGN AREA (ft <sup>2</sup> )
35'-0 (10 660 mm)	14'-0 (4260 mm)	210 ft <sup>2</sup> (19.5m <sup>2</sup> )
34'-0 (10 360 mm)	14'-0 (4260 mm)	224 ft <sup>2</sup> (20.8m <sup>2</sup> )
33'-0 (10060 mm)	14'-0 (4260 mm)	238 ft <sup>2</sup> (22.1m <sup>2</sup> )

Table No. 2

CANTILEVER LENGTH MAXIMUM	MAXIMUM SIGN HEIGHT	MAXIMUM SIGN AREA
33'-0 (10060 mm)	10'-0 (3050 mm)	150 ft <sup>2</sup> (13.9m <sup>2</sup> )
30'-0 (9100 mm)	11'-0 (3350 mm)	176 ft <sup>2</sup> (16.4m <sup>2</sup> )
27'-6 (8380 mm)	12'-0 (3650 mm)	192 ft <sup>2</sup> (17.8m <sup>2</sup> )

### 3. Bridge Mounted Sign Supports

The review of bridge mounted sign supports will be based on the truss and sign limits in the original plan set. New signs will be allowed to extend one foot (300 mm) above the top of the vertical sign members. This requirement applies to all signs including exit signs and hospital signs added to the top of existing sign configurations.

GAN/dgb/bj