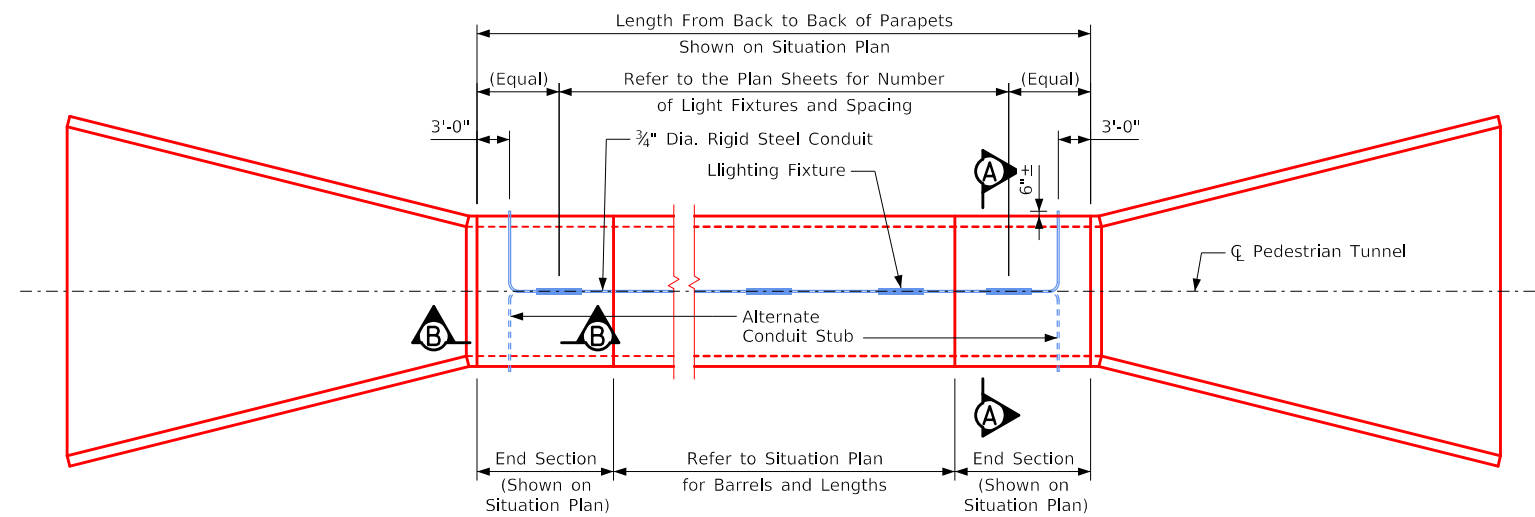




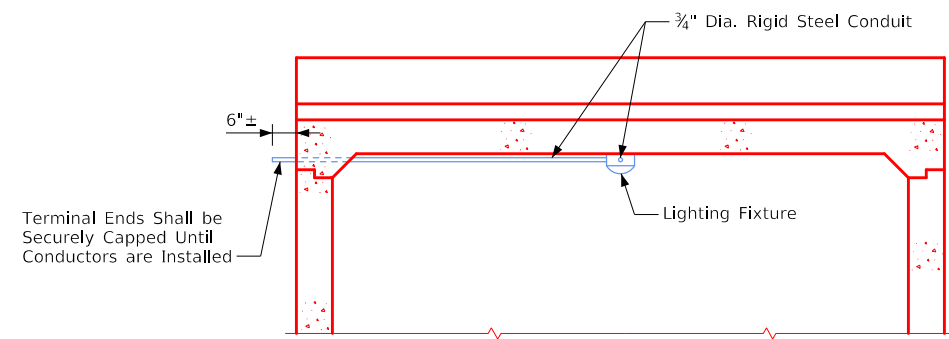
ENGLISH\_LRFD\_SIGNED\_PEDESTRIAN\_TUNNEL\_STANDARDS.DGN - 7010 - THIS SHEET ISSUED 08-2020

**General Lighting Notes:**

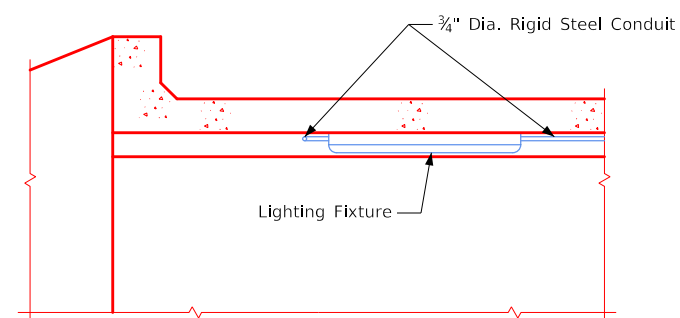
1. Construction shall conform to Section 2523 of the Standard Specifications as applicable to the project.
2. See design plans for project specific details (electrical service routing, handhole locations, control cabinet details, lighting fixture specification, conductor requirements, etc.).
3. Secure conduit and lighting fixtures to concrete with post-installed anchors. Type and size to be approved by the Engineer.



Tunnel Plan



Section A-A



Section B-B

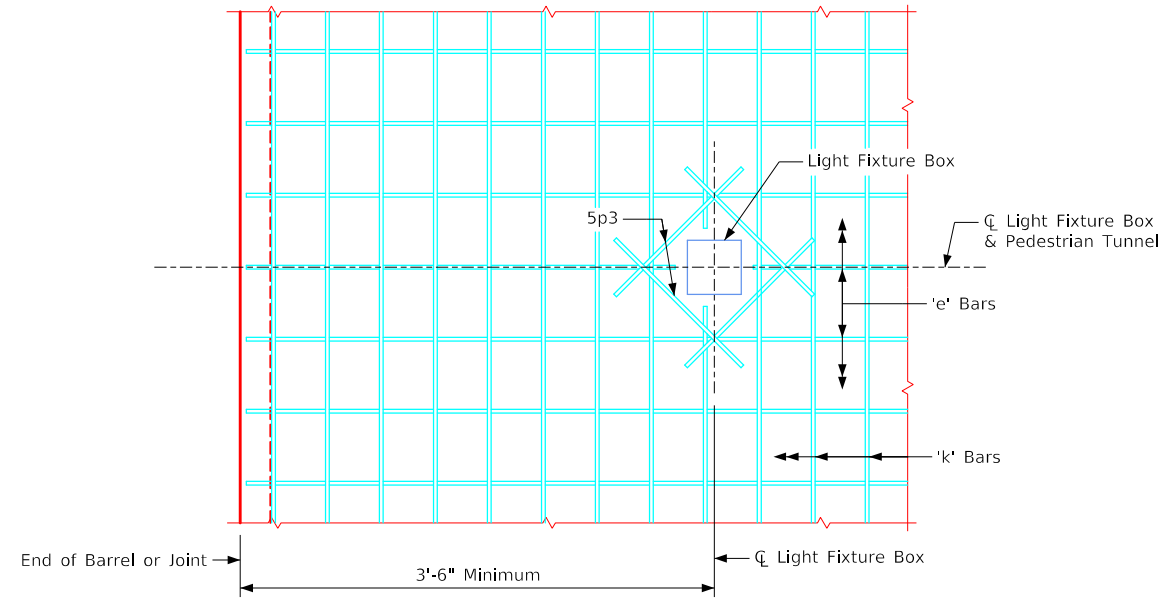
**Lighting Details**

IOWA DEPARTMENT OF TRANSPORTATION - HIGHWAY DIVISION  
 DESIGN SHEET NO. \_\_\_\_ OF \_\_\_\_ FILE NO. \_\_\_\_ DESIGN NO. \_\_\_\_

ENGLISH\_LRFD\_SIGNED\_PEDESTRIAN\_TUNNEL\_STANDARDS.DGN - 7011 - THIS SHEET ISSUED 08-2020

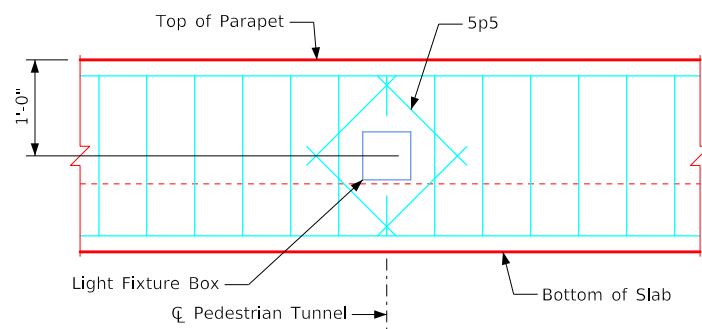
Light Fixture & Junction Box Reinf. Bar List					
Bar	Location	Shape	No.	Length	Weight
5p3	Slab, Bottom, at Light Fixture Box, (One Box)		*4	2'-6"	*10
5p4	Wingwall, F.F., at Junction Box (One Box)		*4	3'-3"	*14
5p5	Front Face of Parapet (One Box)		*4	1'-4"	*6

\* Quantities shown are for the number of boxes listed in this table.  
Actual quantities needed are tabulated on the "General Notes" Sheet in the design plans.

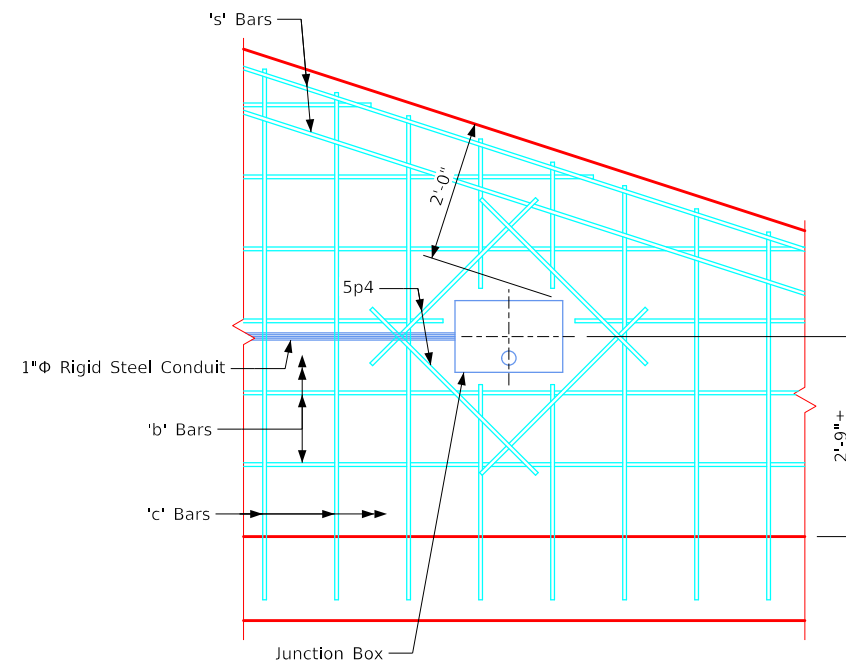


Part Plan View Bottom Slab at Light Fixture Box

Notes:  
Cut e1 and k1 bars in bottom face of barrel slab as necessary to clear light fixture box.  
Provide 2 inches clear from end of bars and light fixture box.



Parapet Location of Light Fixture Box (Showing Front Face of Parapet)



Detail A of Junction Box Reinforcing at Wingwall

Notes:  
Cut 'b' and 'c' bars in front face of wingwall as necessary to clear junction box.  
Provide 2 inches clear from end of bars and junction box.

## Lighting Details

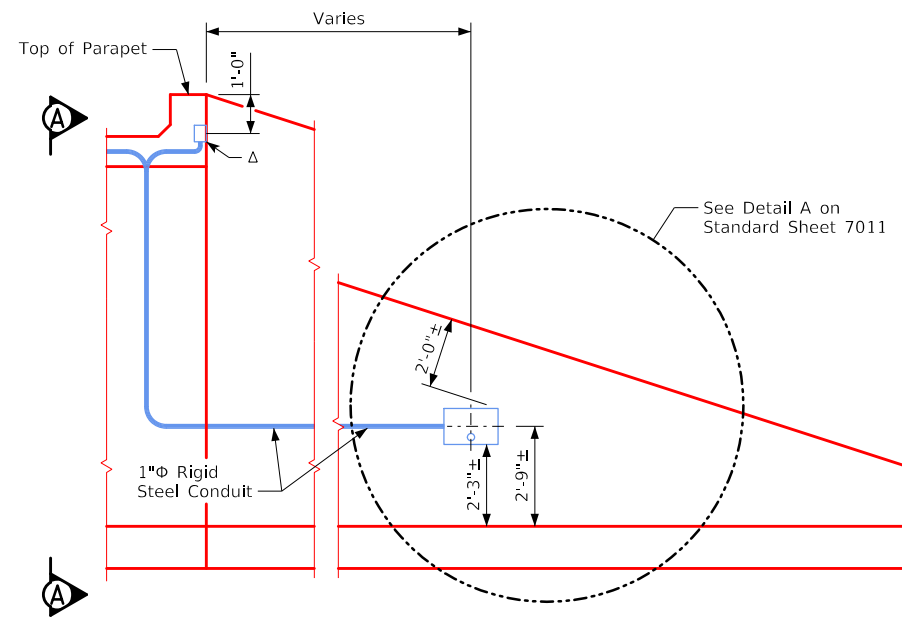
IOWA DEPARTMENT OF TRANSPORTATION - HIGHWAY DIVISION  
DESIGN SHEET NO. \_\_\_\_ OF \_\_\_\_ FILE NO. \_\_\_\_ DESIGN NO. \_\_\_\_

ENGLISH\_LRFD\_SIGNED\_PEDESTRIAN\_TUNNEL\_STANDARDS.DGN - 7012 - THIS SHEET ISSUED 08-2020

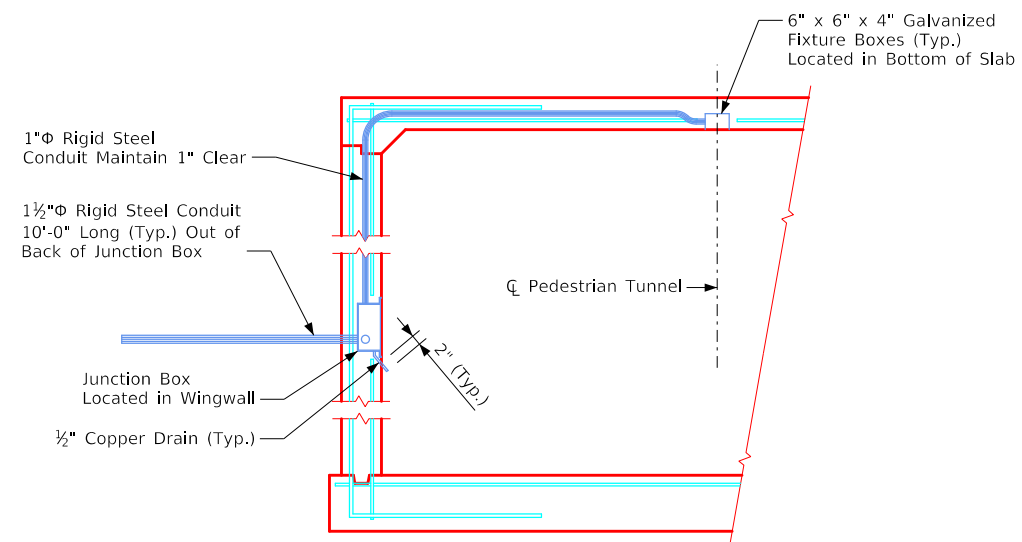
### General Lighting Notes:

If recessed light fixtures selected for the project include accommodations for wiring connections within the fixture housing, conduit stub-outs without 6"x6"x4" fixture box may be used at light fixture locations.

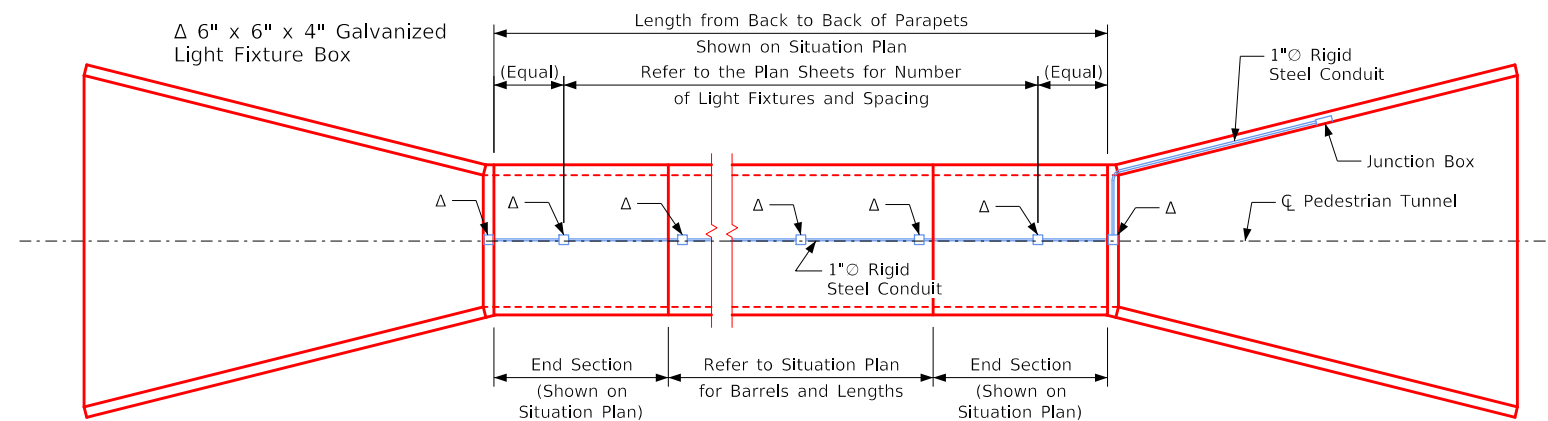
Note:  
Junction boxes shall be LI-104 Type 1.



Front Face View of Wingwall



Barrel Section A-A



Tunnel Plan

## Lighting Details

IOWA DEPARTMENT OF TRANSPORTATION - HIGHWAY DIVISION  
DESIGN SHEET NO. \_\_\_\_ OF \_\_\_\_ FILE NO. \_\_\_\_ DESIGN NO. \_\_\_\_