


LATTICE DETAIL

$\frac{1}{2}$ " bars at 1'-0" @

 3" Lattice bars $\frac{1}{2}$ " bars at 3'-0" @
 DETAIL OF ARCH BARS

Wing Footing Reinforcing
Transverse, $\frac{1}{2}$ " bars at 14" @
top and bottom 4'-0" long.
Longitudinal, $\frac{1}{2}$ " bars as
shown.

General Notes:

Use a 2-0 lap on all splices.

Foundations to be carried a
deeper if necessary.

For Culvert Details see
Sheet 2 of this design.

Standard Specifications
of the Iowa Highway
Commission.

QUANTITIES

Concrete.....	273 Cy.
Reinf. Steel.....	11,700 Lbs.
Piling.....	148

Reinf. Steel.... 11,700 Lbs

Piling 148

*Note: This design supersedes
Design No 14, 1921.*

Design No 14, 1921.

Bridge No.

Section 3

Cooper Twp.

Monona Co.

Design for

20' SKEW ARCH BRIDGE

Reinforced Concrete

ARCH DETAILS

Station 653+31, Primary Project No. 38

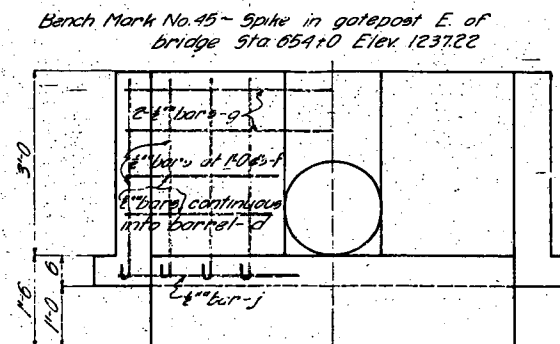
MONONA COUNTY

Iowa Highway Commission

Oct. 11, 1921. Scale: $\frac{3}{16}$ " = 1'-0"

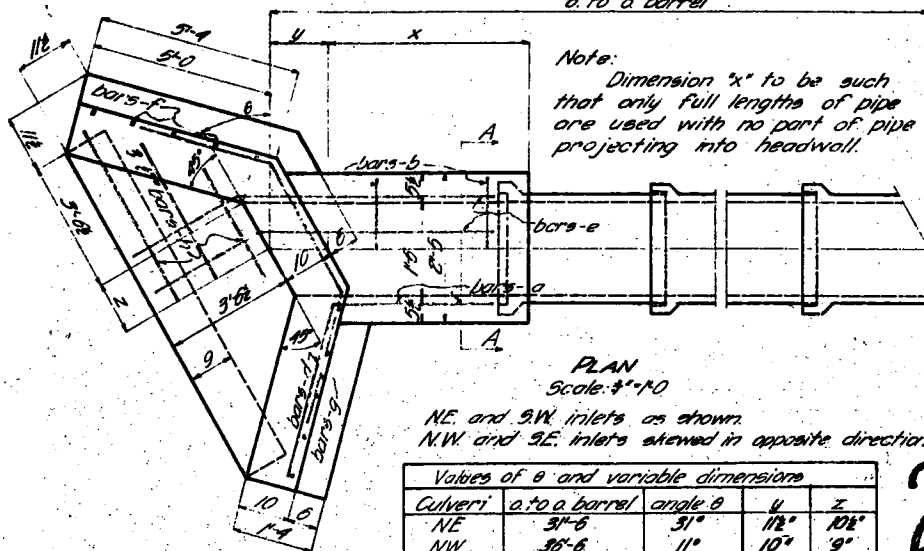
Sheet 1 of 2

Design No. 14a, Menona Co., 1921.



General Notes:
18" Pips shown to
be selected, first class,
vitrified, salt glazed
sewer pipe.
Foundations to be carried
deeper if necessary.
Standard Specifications
of Iowa Highway Commission.

GROSS SECTION A-A
Scale: 1"=1'-0"



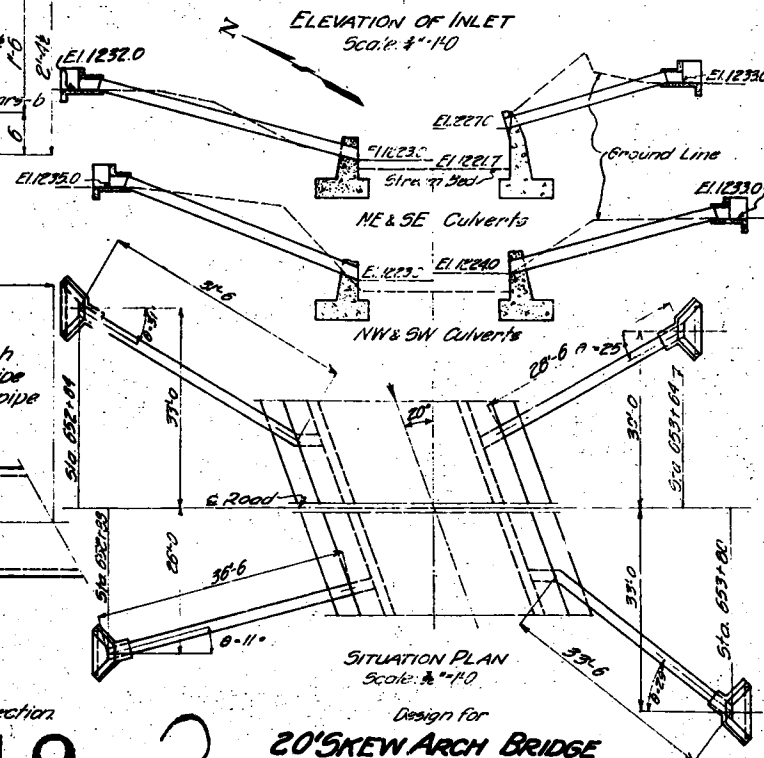
PLAN
Scale: 3"=1'-0"

NE. and SW. inlets as shown.
N.W. and S.E. inlets skewed in opposite direction.

Values of θ and variable dimensions				
Culvert	2. to a barrel	angle θ	u	z
NE	31'-6"	31°	112°	10 1/2"
NW	36'-6"	11°	107°	9°
SW	35'-6"	29°	112°	10 1/2"
SE	28'-6"	25°	111°	10°

Note:
Bends in N.E. and S.W.
culverts to be of concrete
and to conform to Section 4-A

*Note: This sheet revised
Oct. 11, 1921.*



SITUATION PLAN
Score: 100

Design for

20'SKEW ARCH BRIDGE

INTAKE CULVERT DETAILS

INTAKE CULVERT DETAILS

Station 653+31, Primary Project No. 38

MONONA COUNTY

Iowa Highway Commission
March 1, 1921 - Scales as noted

Sheet 2 of 2

Bridge No.
Section 34
Cooper Twp
Morrow Co.

Design No 140; Monrovia Co., 1921