

Use the same concrete for the bridge approach section as is used for the remainder of the project pavement.

For joint details, see [PV-101](#).

- ① If bridge is skewed, place additional #5 bar parallel to skewed face.
- ② T is the same thickness as is required for the remainder of the project pavement.

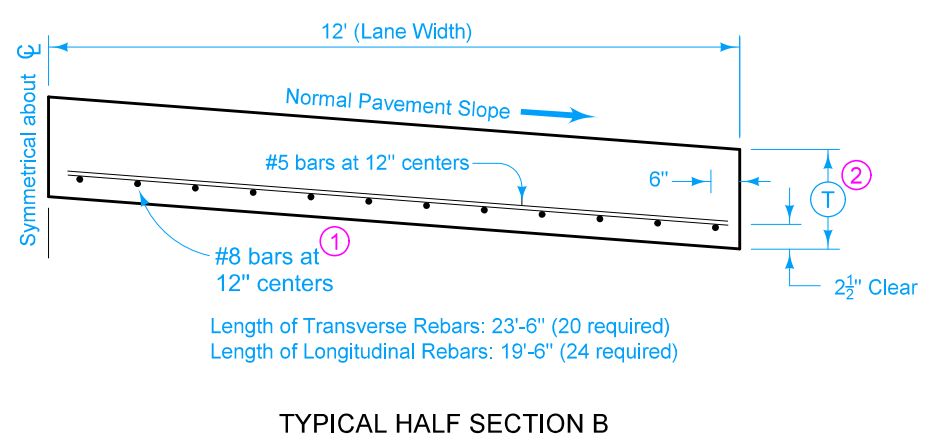
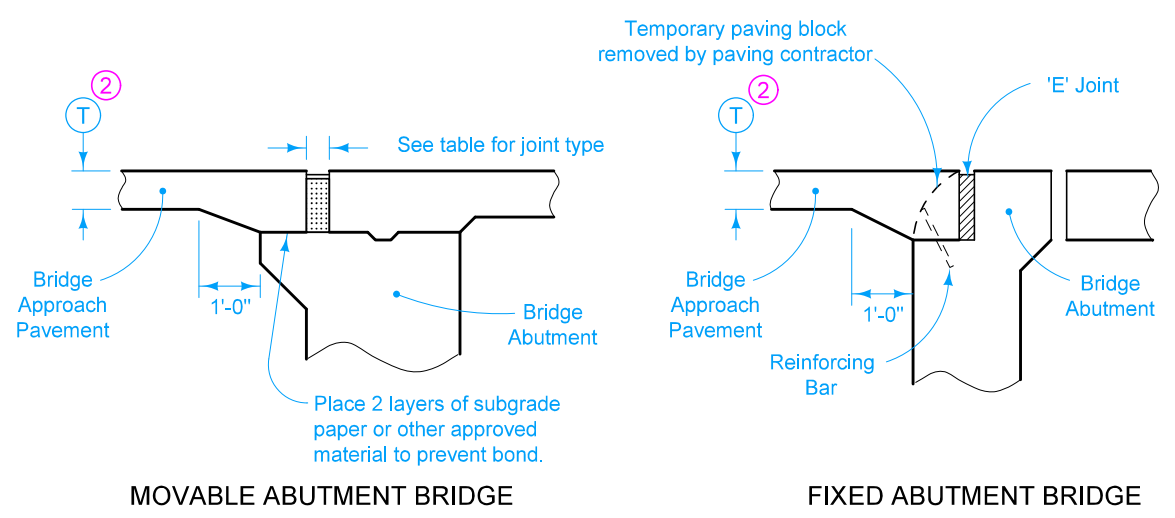
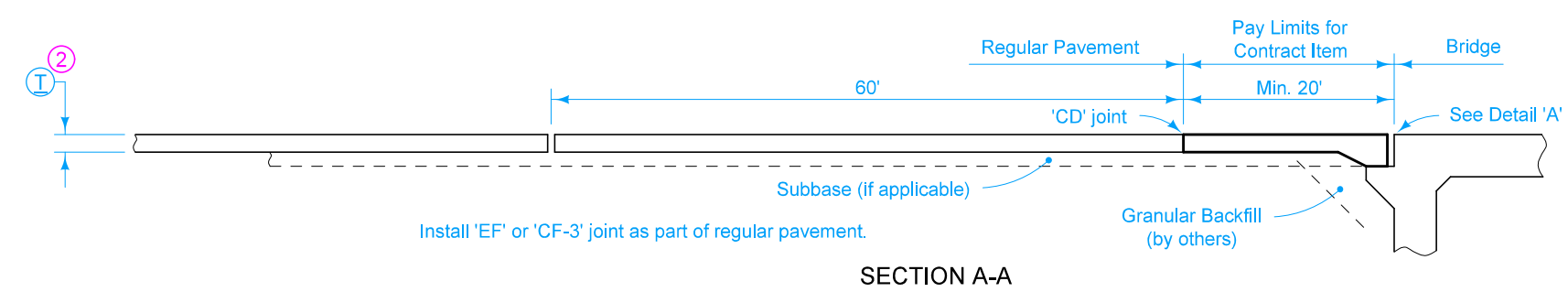
Quantity for 20 foot long approach section for 24 foot pavement is 53.33 square yards of "Bridge Approach."

JOINT TYPE FOR MOVABLE ABUTMENT BRIDGES		
Joint	Concrete Beam Maximum Bridge Length	Steel Girder Maximum Bridge Length
CF-1	370'	250'
CF-2	465'	320'
CF-3	575'	400'

Possible Contract Items:
 Bridge Approach, Secondary Roads
 Standard or Slip-Form PCC Pavement

Possible Tabulation:
 112-6

	REVISION	
	New	04-21-15
STANDARD ROAD PLAN		BR-121
REVISIONS: New. Replaces RK-18.		SHEET 1 of 1
 APPROVED BY DESIGN METHODS ENGINEER		



**BRIDGE APPROACH DETAILS
 (SECONDARY ROADS)**