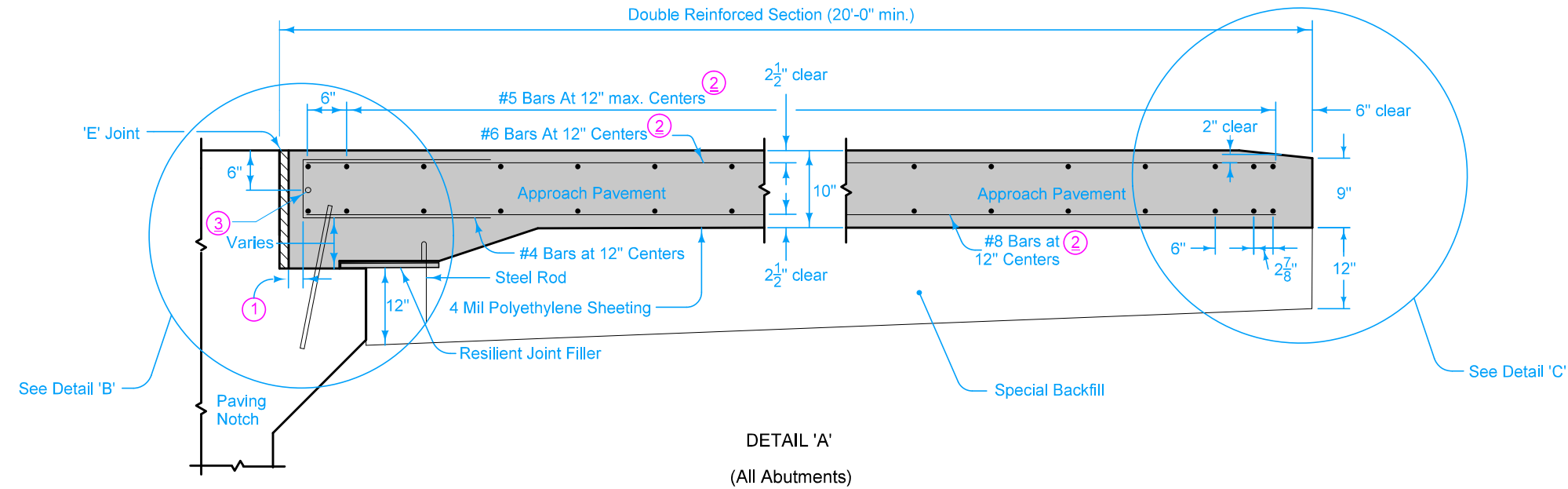


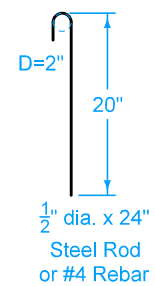
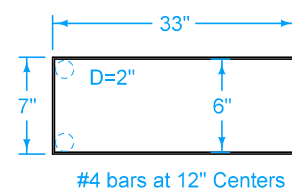
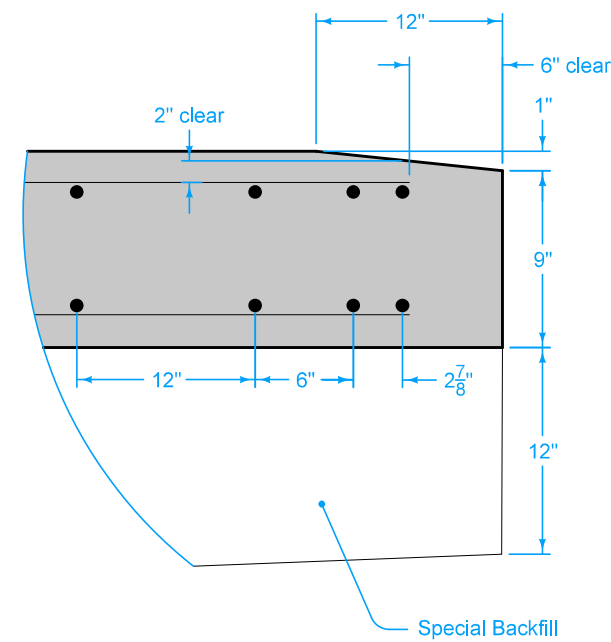
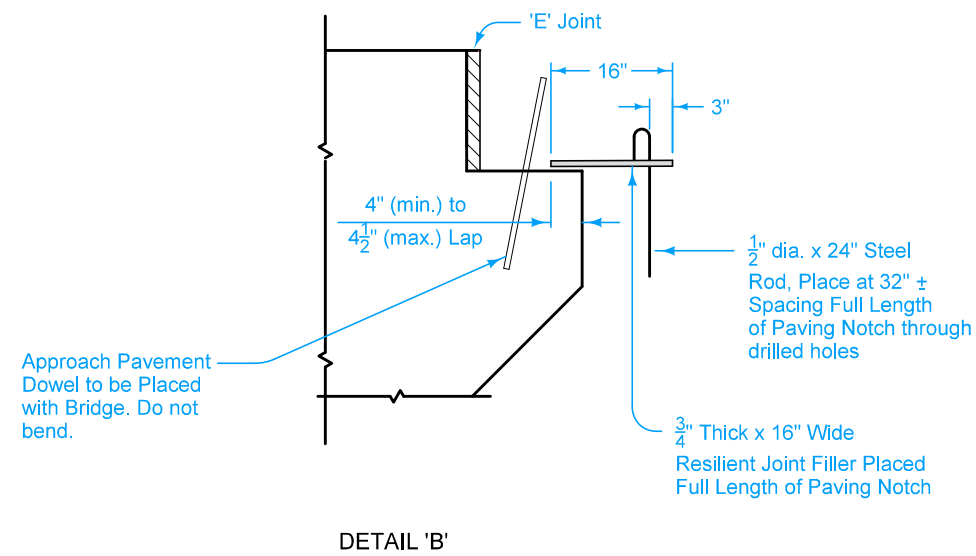
For joint details, refer to PV-101.

For curb details, see Detail 'F'.

All transverse bars are #5.



- ① 2" min. to 2 1/2" max. clear to bent bar.
- ② Minimum lap length: #5 Bars - 38"
#6 Bars - 45"
#8 Bars - 59"
- ③ If bridge is skewed, place additional #5 bar parallel to skewed face.

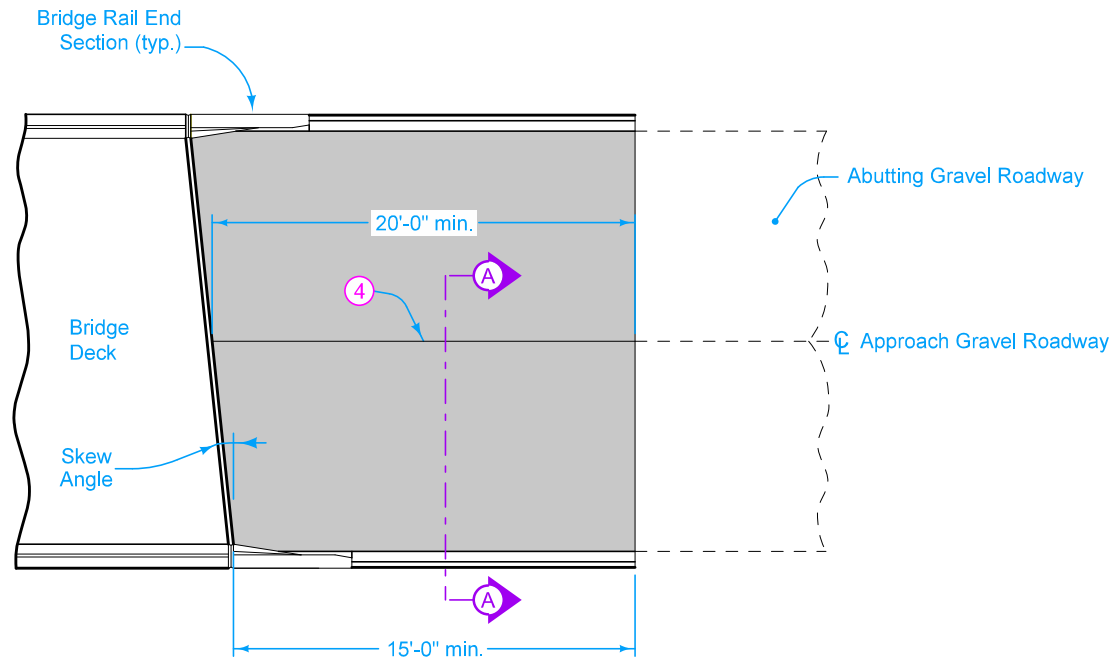


BENT BAR SHAPES

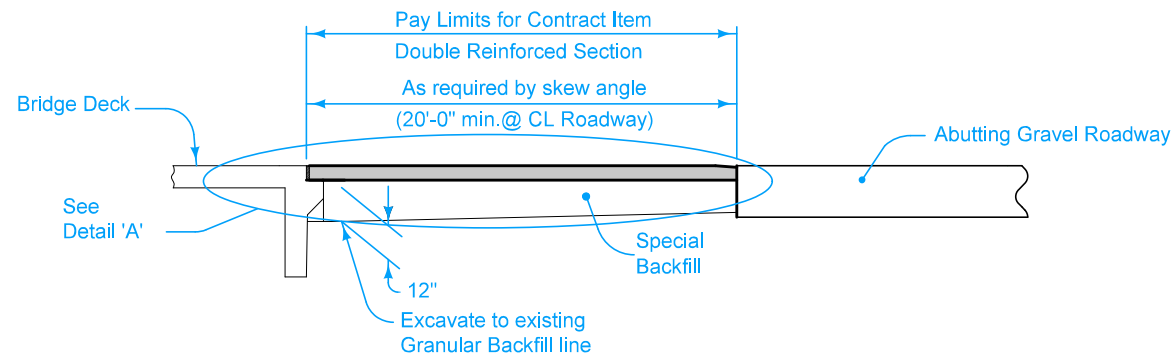
Possible Contract Item:
Bridge Approach, BR-241

Possible Tabulation:
112-6

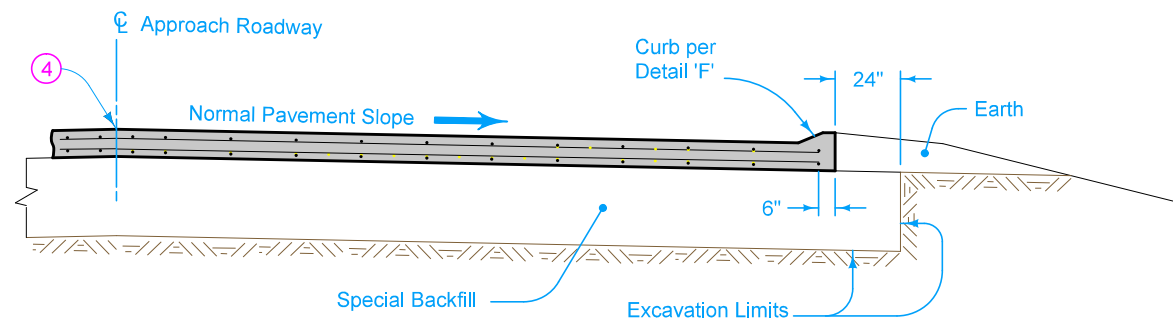
	REVISION	
	New	04-18-17
<h2>STANDARD ROAD PLAN</h2>		<h1>BR-241</h1>
REVISIONS: New.		SHEET 1 of 3
 APPROVED BY DESIGN METHODS ENGINEER		
<h3>DOUBLE REINFORCED 10" APPROACH ON GRAVEL ROADS</h3>		



PLAN VIEW



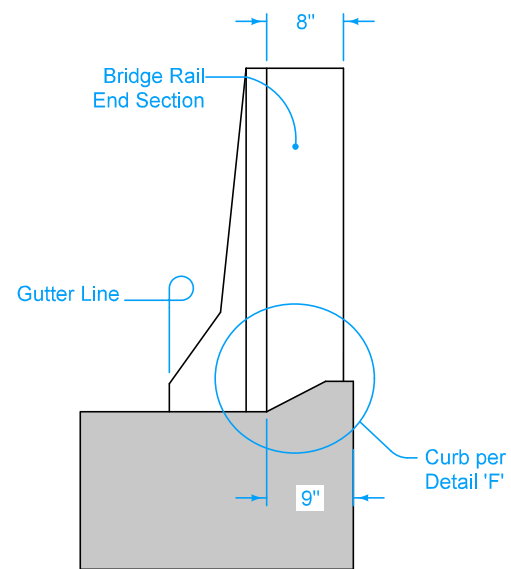
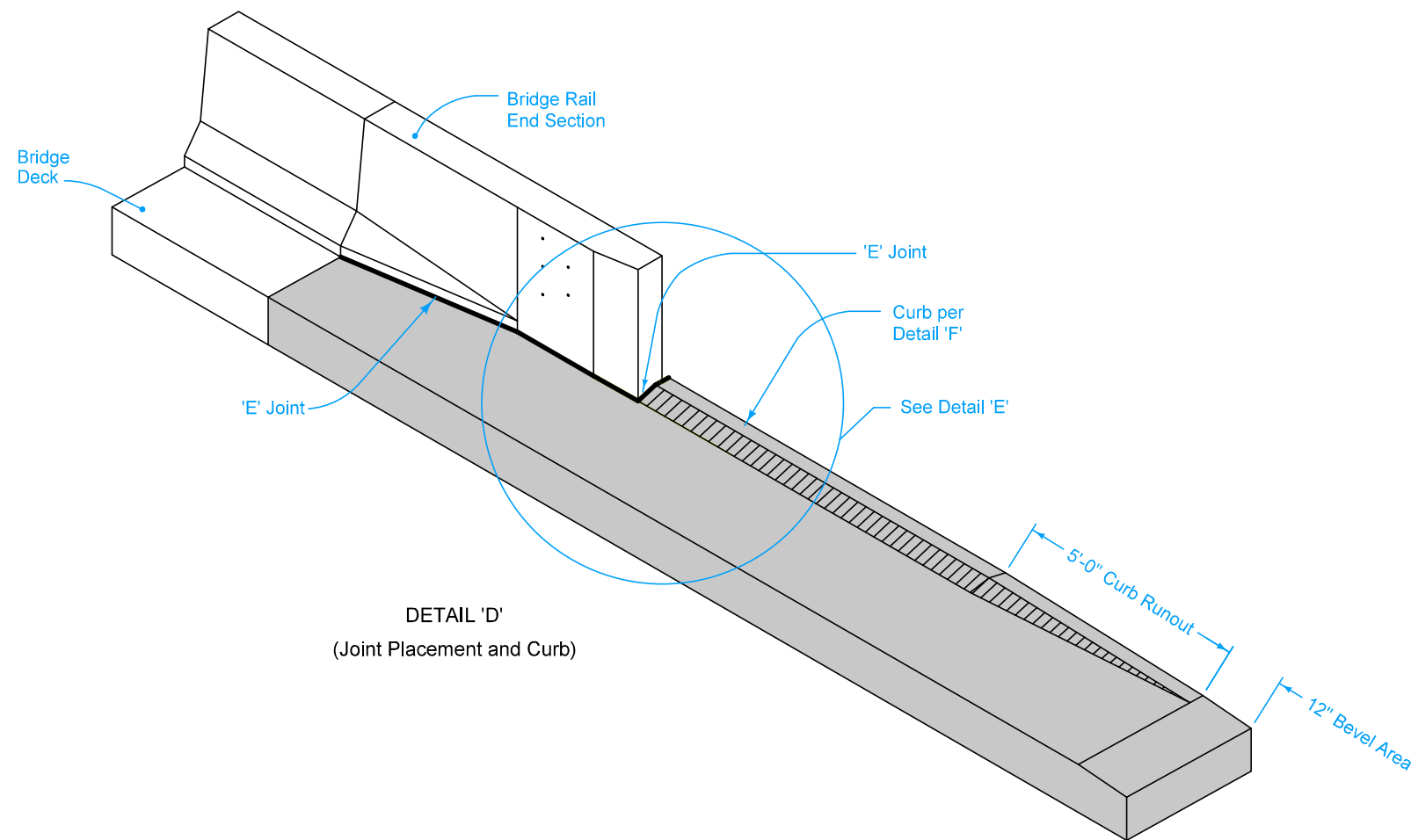
SECTION THRU CENTERLINE



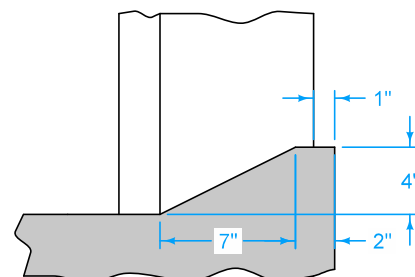
SECTION A-A

- 4 Longitudinal Joint (PV-101):
Single pour - Saw cut joint per Detail B.
Two pours - Use 'KS-2' joint.

	REVISION	
	New	04-18-17
STANDARD ROAD PLAN		BR-241
REVISIONS: New.		SHEET 2 of 3
 APPROVED BY DESIGN METHODS ENGINEER		
DOUBLE REINFORCED 10" APPROACH ON GRAVEL ROADS		



DETAIL 'E'
(Back of Curb Placement)



DETAIL 'F'

	REVISION	
	New	04-18-17
STANDARD ROAD PLAN		BR-241
REVISIONS: New.		SHEET 3 of 3
 APPROVED BY DESIGN METHODS ENGINEER		
DOUBLE REINFORCED 10" APPROACH ON GRAVEL ROADS		