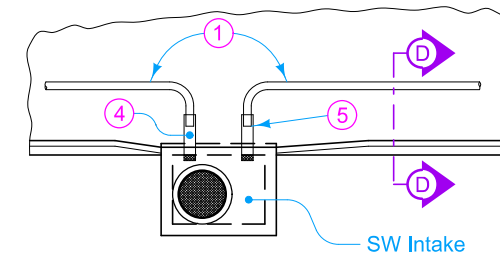
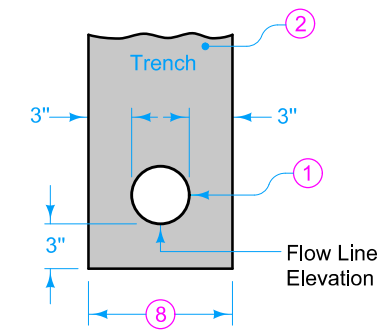


PLAN



INTAKE OUTLET



TUBING PLACEMENT ALL TYPES

When culverts which are less than 1 foot below the trench bottom are encountered within a tabulated subdrain, stop the trench 3 feet from the culvert and resume 3 feet beyond the culvert.

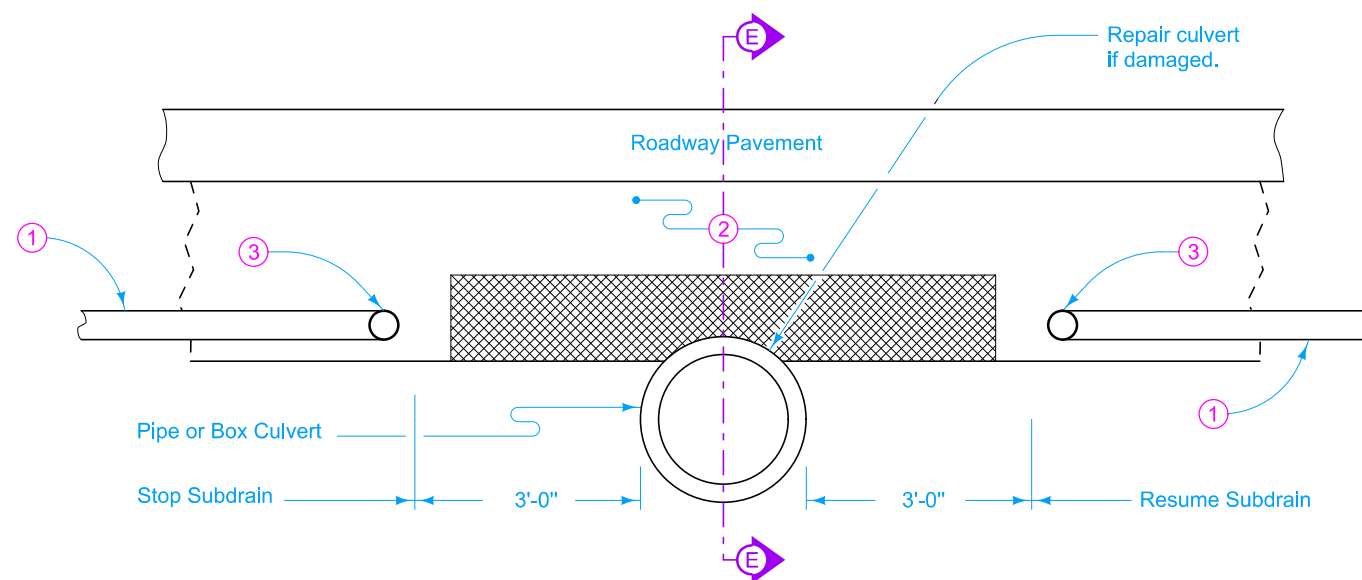
On new construction projects, place the subdrain after the special backfill, if required, and prior to granular or paved shoulder material.

Except for backslope installations, if the Contractor's operations result in a trench, place and compact granular shoulder material in the trench to be level with the adjacent surface prior to opening lanes to traffic.

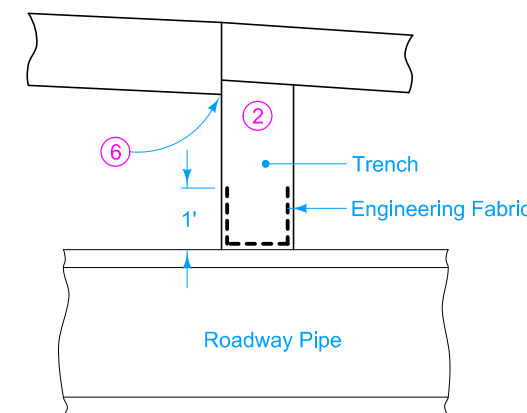
- ① Perforated Subdrain (Corrugated Polyethylene Tubing).
- ② Porous Backfill for Subdrain (compacted).
- ③ Subdrain outlets. See DR-306.
- ④ 2 foot section of corrugated metal pipe of diameter 2" larger than subdrain or 2 foot section of double-walled PE or PVC pipe of the same diameter as subdrain. Pipe will be paid for as "Subdrain Outlet (DR-303)".
- ⑤ Connect PE or PVC outlet with an appropriate coupler. Connect CMP outlet one of two ways: (1) Inside-fit reducer coupler (1 foot minimum fit inside CMP); or (2) Insert 1 foot of the 4 inch subdrain into 6 inch CMP and fully seal entire opening with grout.
- ⑥ Place porous backfill in direct contact with a minimum of 2 inches of pavement and continuous to shoulder material as per note 10 or 11.
- ⑦ If the trench is inadvertently carried over the culvert, repair the trench as detailed on this sheet. If obstruction is 1 foot or more below trench bottom, carry subdrain line over in continuous alignment. No payment will be made for trench repair.
- ⑧ 10 inches for 4 inch subdrain. 12 inches for 6 inch subdrain.

Possible Contract Items:  
 Subdrain, Longitudinal, (Backslope)  
 Subdrain, Longitudinal, (Shoulder)  
 Subdrain Outlet (DR-303)  
 Subdrain Outlet (DR-306)

Possible Tabulation:  
 104-9



TRENCH REPAIR AT PIPE CULVERT ⑦



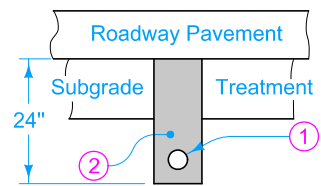
SECTION E-E

<b>IOWA DOT</b>	REVISION	
	3	10-17-17
<b>STANDARD ROAD PLAN</b>		<b>DR-303</b>
		SHEET 1 of 2

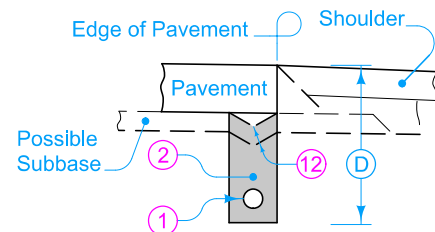
REVISIONS: References to the DR-304 have been changed to the DR-306.

*Shawn Miller*  
 APPROVED BY DESIGN METHODS ENGINEER

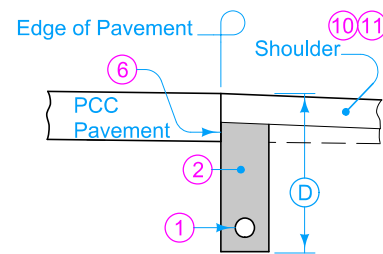
**SUBDRAINS  
 (LONGITUDINAL)**



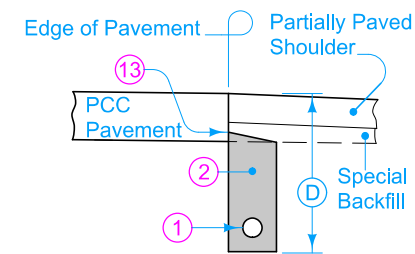
**TYPE 5 INSTALLATION**  
**SECTION A-A**  
Subgrade Treatment Subdrain



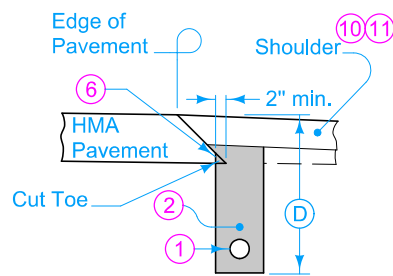
**TYPE 6 INSTALLATION**  
**SECTION C-C**  
For Drain Placement Prior to  
Subbase or Pavement Placement



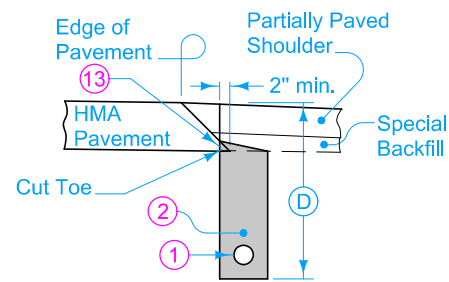
**TYPE 7A INSTALLATION**  
**SECTION C-C**



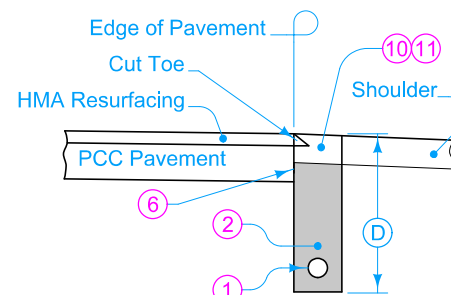
**TYPE 7B INSTALLATION**  
**SECTION C-C**



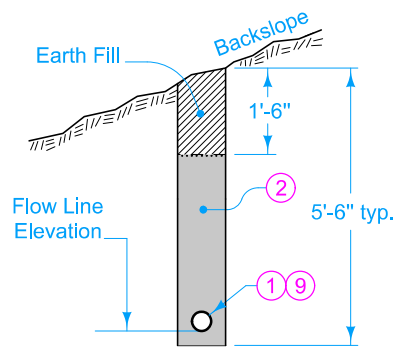
**TYPE 8A INSTALLATION**  
**SECTION C-C**



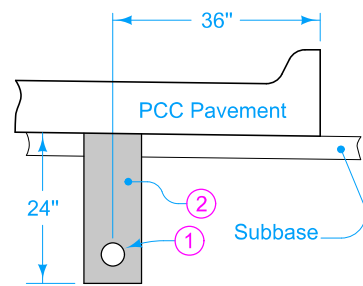
**TYPE 8B INSTALLATION**  
**SECTION C-C**



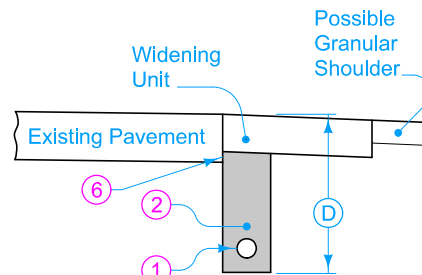
**TYPE 9 INSTALLATION**  
**SECTION C-C**  
Composite Pavement  
with Existing Shoulder



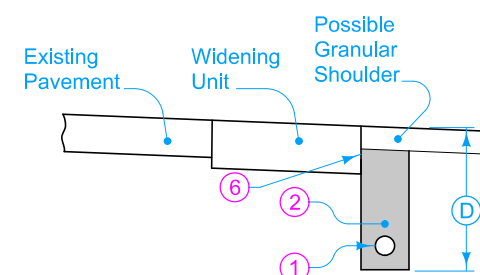
**TYPE 11 INSTALLATION**  
**SECTION B-B**  
Backslope



**TYPE 12 INSTALLATION**  
**SECTION D-D**



**TYPE 13 INSTALLATION**  
**SECTION C-C**  
For New Widening Unit if  
Thinner than Existing Pavement



**TYPE 14 INSTALLATION**  
**SECTION C-C**  
For New Widening Unit if  
Thicker than Existing Pavement

- ① Perforated Subdrain (Corrugated Polyethylene Tubing).
- ② Porous Backfill for Subdrain (compacted).
- ⑥ Place porous backfill in direct contact with a minimum of 2 inches of pavement and continuous to shoulder material as per note 11 or 12.
- ⑨ Install subdrain as cut proceeds.
- ⑩ On existing Granular or Earth Shoulders, replace with 4 inch minimum depth granular shoulder material.
- ⑪ On Paved Shoulders, refer to Section 2502 of the Standard Specifications for finishing shoulder.
- ⑫ Cut "V" notch just prior to subbase (if proposed) or pavement placement to assure uncontaminated contact.
- ⑬ Place top of subdrain trench at the bottom of pavement. Backfill trench so that a wedge of porous backfill has a minimum vertical contact of 2 inches with the pavement.

 <b>STANDARD ROAD PLAN</b>	REVISION	
	3	10-17-17
	<b>DR-303</b> SHEET 2 of 2	
REVISIONS:      References to the DR-304 have been changed to the DR-306.		
 APPROVED BY DESIGN METHODS ENGINEER		
<b>SUBDRAINS</b> <b>(LONGITUDINAL)</b>		