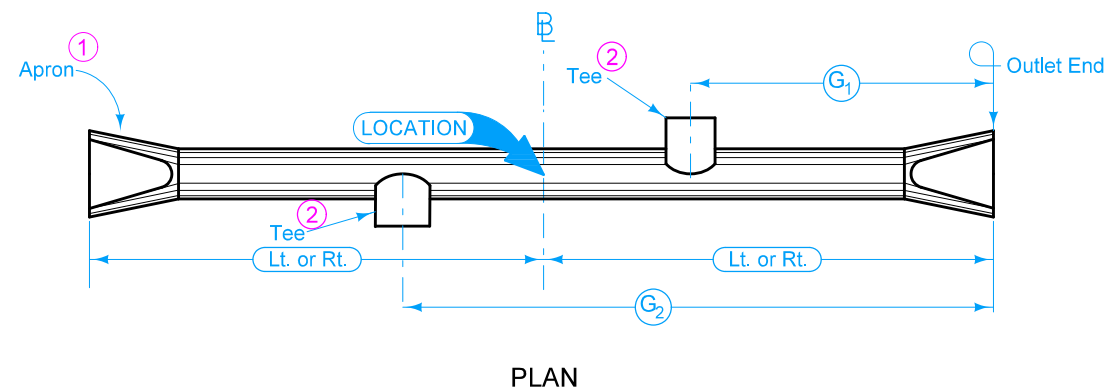
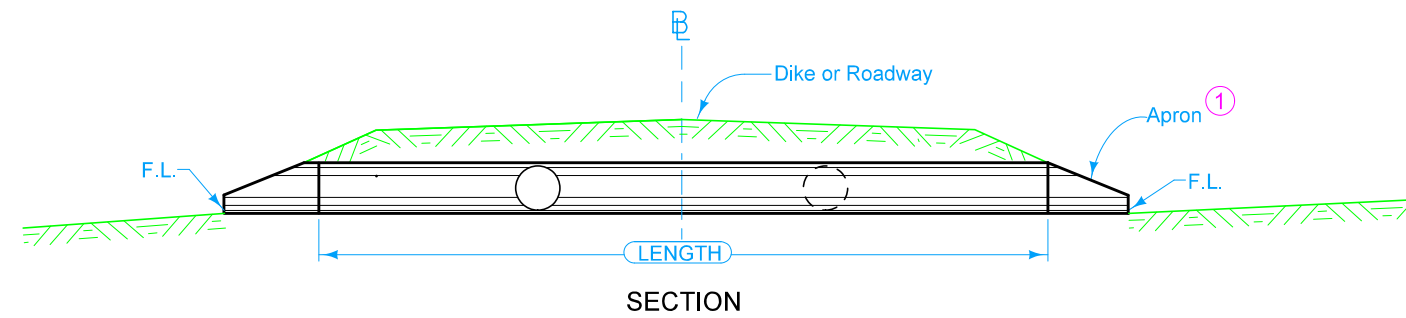


E is C of roadway, dike, survey, or other as detailed on the plans.

Skew angle is the angle which one end of the pipe is ahead (by stationing) of a line perpendicular to the E .
(Example: skew Rt. ahead 30 degrees).



G is the dimension to C of Tee from outlet end of pipe. Either one or two Tees are required as specified.



PLAN
REINFORCED CONCRETE PIPE CULVERT

- ① Refer to the following:
 DR-201 for circular concrete.
 DR-202 for low clearance concrete.
 DR-203 for circular metal.
 DR-205 for circular concrete with end wall.
 DR-206 for low clearance concrete with end wall.
- ② See DR-142.

Possible Tabulation:
104-3

 STANDARD ROAD PLAN	REVISION	
	1	04-18-17
	DR-602	
SHEET 1 of 1		
REVISIONS: Modified note 1 to include references to additional apron types.		
 <small>APPROVED BY DESIGN METHODS ENGINEER</small>		
REINFORCED CONCRETE PIPE CULVERT WITH TEES		