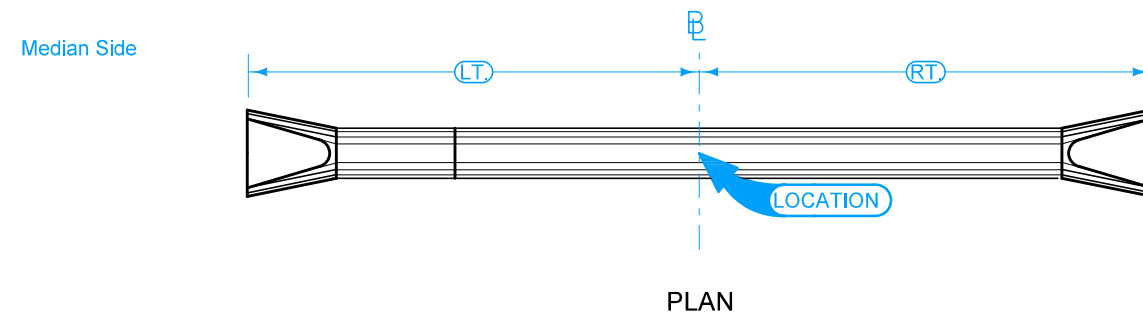
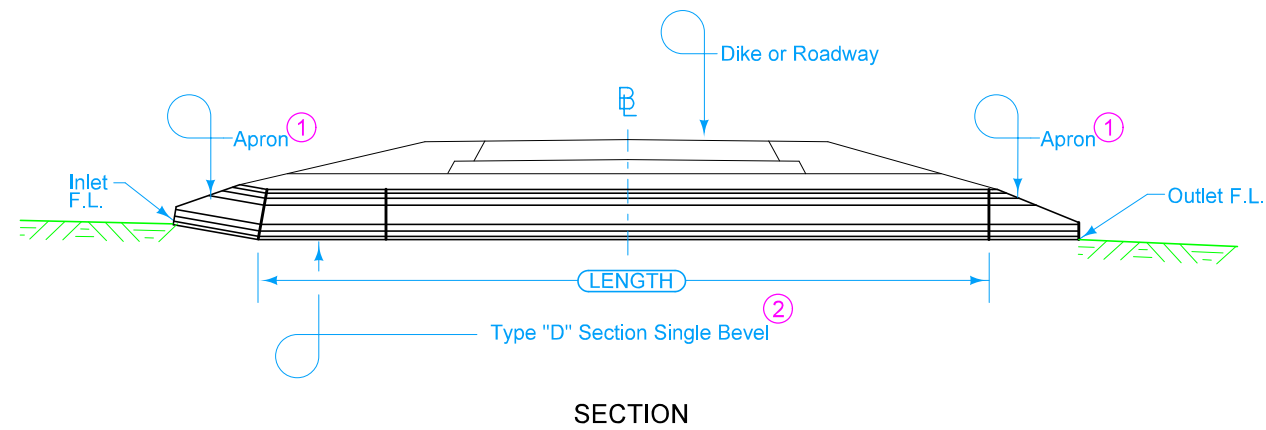




$\mathcal{E}$  is  $\mathcal{C}$  of roadway, dike, survey, or other; as detailed on plans.

- ① Refer to the following:  
 DR-201 for circular concrete.  
 DR-202 for low clearance concrete.  
 DR-205 for circular concrete with end wall.  
 DR-206 for low clearance concrete with end wall.
- ② Type "D" Section with single bevel. See Standard Road Plan DR-141 for details.



Possible Tabulation:  
104-3

 <b>STANDARD ROAD PLAN</b>	REVISION
	New 04-17-18
<b>DR-613</b>	
SHEET 1 of 1	
REVISIONS: New.	
 <small>APPROVED BY DESIGN METHODS ENGINEER</small>	
<b>CONCRETE PIPE WITH "D" SECTION</b>	