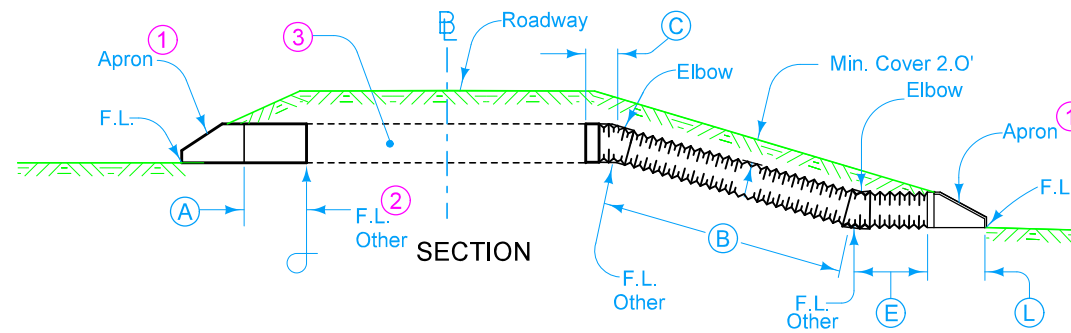


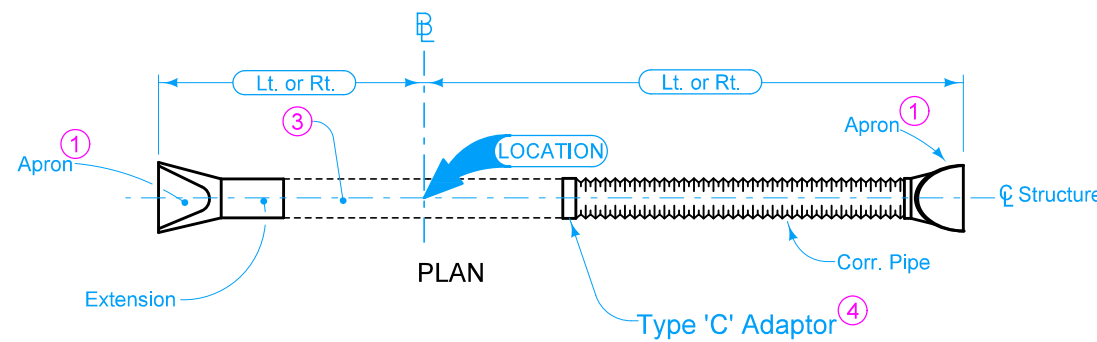
E is C of roadway, dike, survey, or other as detailed on plans.

Extend on line of existing structure to Lt., Rt., or both as specified. Adaptors may be required, see DR-122.



- ① Refer to the following:  
 DR-201 for circular concrete.  
 DR-202 for low clearance concrete.  
 DR-203 for circular metal.  
 DR-204 for arch metal.  
 DR-205 for circular concrete with end wall.  
 DR-206 for low clearance concrete with end wall.
- ② Optional Type "D" section only when specified in tabulation.
- ③ Existing structure.
- ④ See DR-122.



A = Concrete Pipe Length  
 B+C+E = Corr. Pipe Length



Possible Tabulation:  
 104-3

	REVISION	
	1	04-18-17
<b>STANDARD ROAD PLAN</b>		<b>DR-625</b>
		SHEET 1 of 1
REVISIONS: Modified note 1 to include references to additional apron types.		
 APPROVED BY DESIGN METHODS ENGINEER		
<b>PIPE EXTENSION          LETDOWN STRUCTURE          WITH METAL APRON</b>		