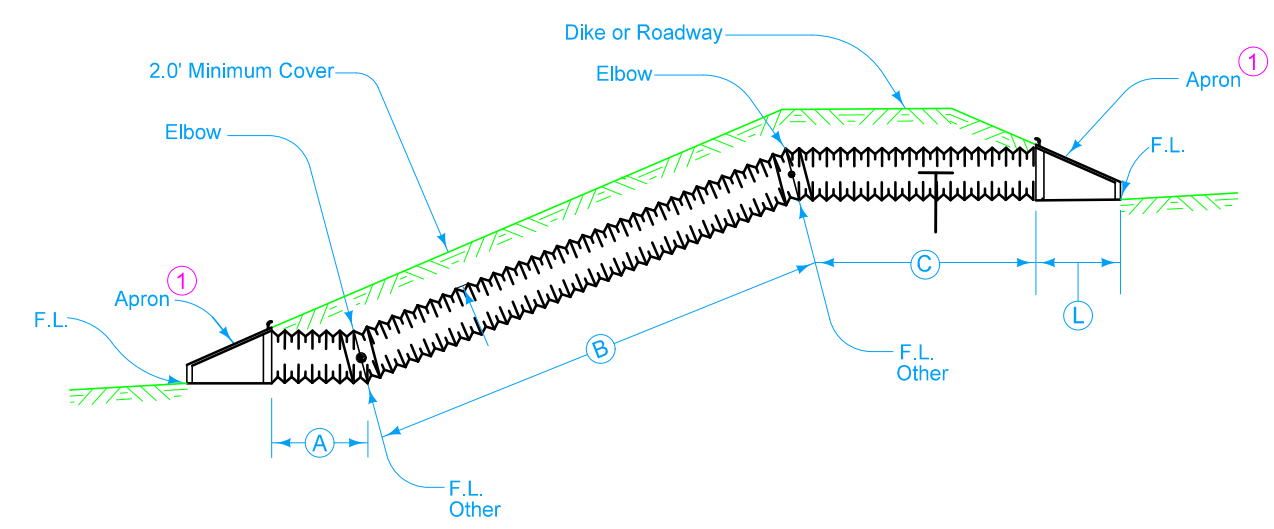


Standard type joint couplings are required. See Materials I.M. 441.

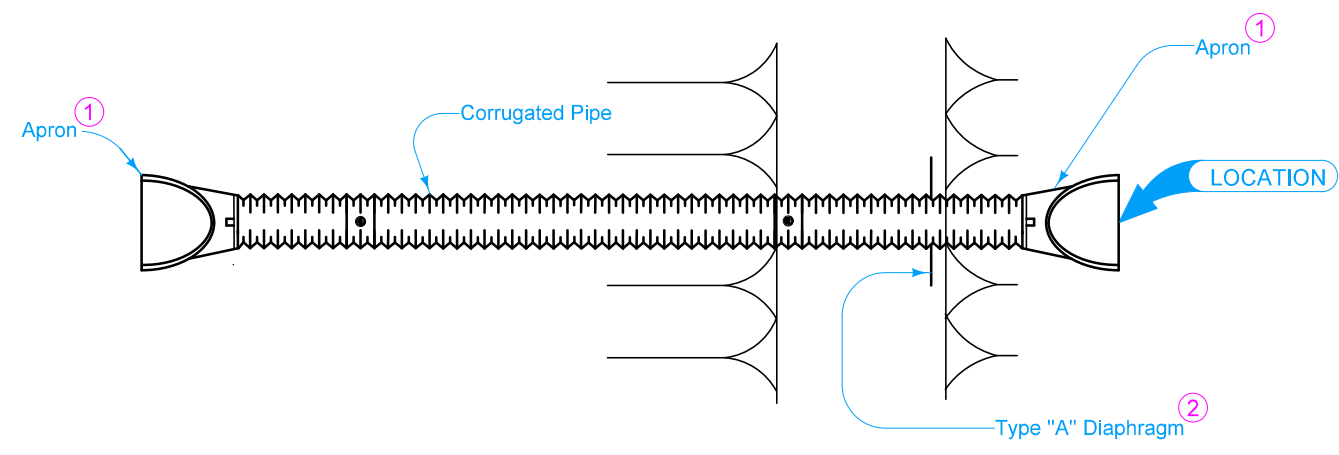
Connection to outlet, if required, is incidental and will not be paid for separately.

- ① Refer to the following:
 DR-203 for the circular metal.
 DR-204 for arch metal.
- ② See DR-501. If more than one diaphragm is specified, install 15 feet apart or as specified.




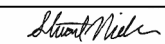
A+B+C = Pipe Length

SECTION



PLAN

Possible Tabulations:
 104-3

 STANDARD ROAD PLAN	REVISION	
	1	04-18-17
DR-632		SHEET 1 of 1
REVISIONS: Modified note 1 to include references to additional apron types.		
 APPROVED BY DESIGN METHODS ENGINEER		
CORRUGATED PIPE CULVERT LETDOWN STRUCTURE WITH DOUBLE ELBOW		