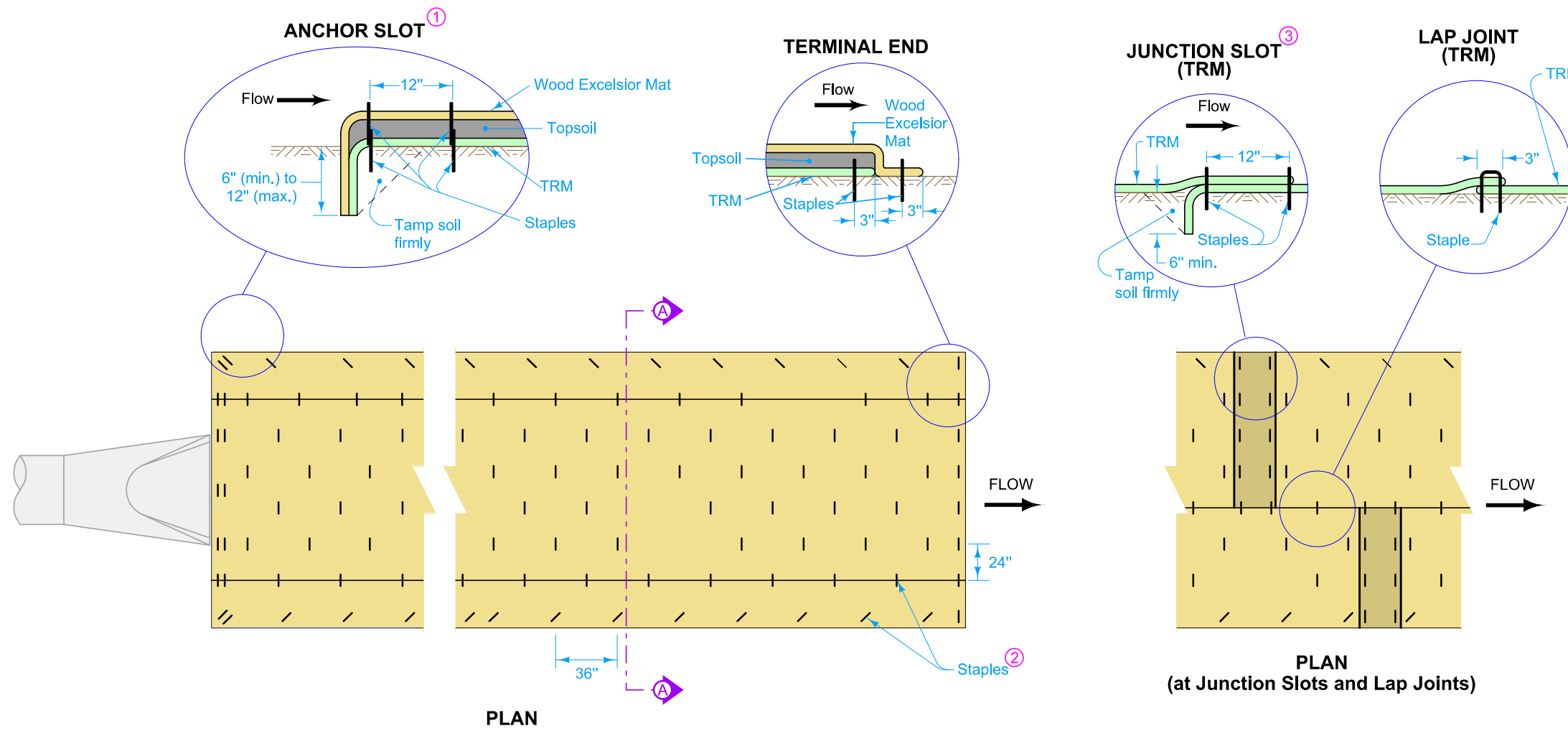
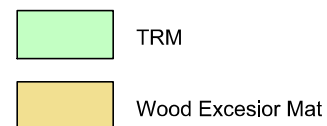
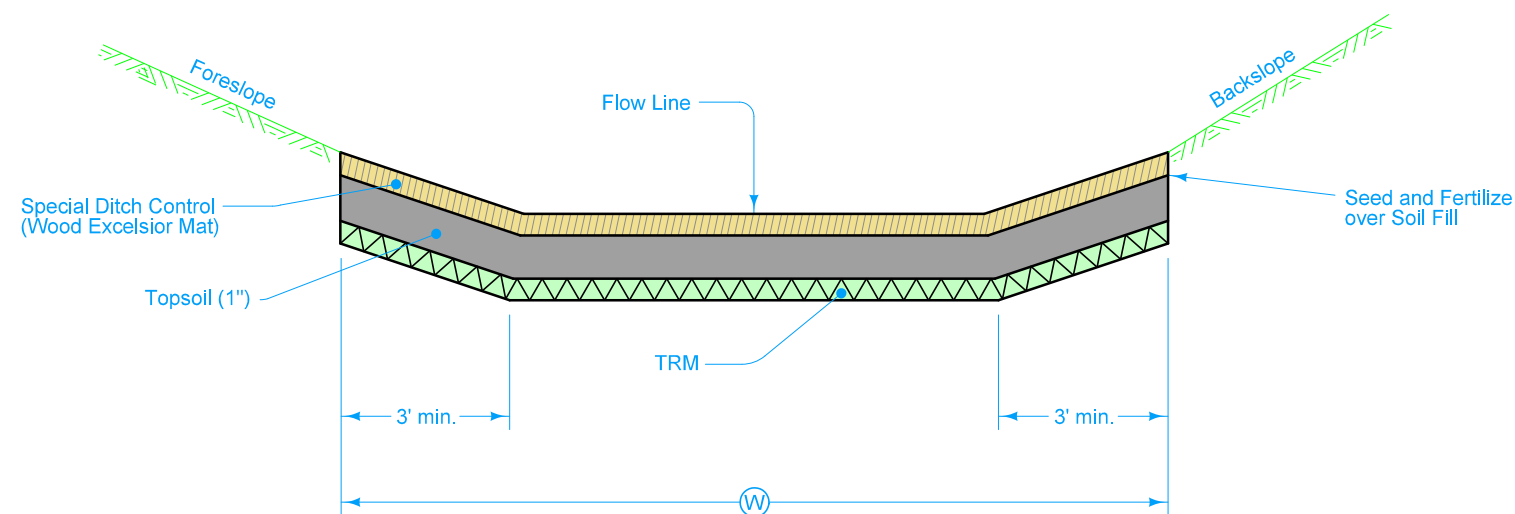


Refer to [EC-101](#) for Special Ditch Control (Wood Excelsior Mat).



- ① Install anchor slot at the beginning (upstream end) of all mat installations.
- ② Place staples alternately in rows approximately 24 inches apart. Approximately 30 staples required per square (100 sq. ft.) of each type of mat.
- ③ Stagger Junction Slots.



Possible Contract Items:
Turf Reinforcement Mat

Possible Tabulation:
100-22

IOWA DOT	REVISION	
	New	04-17-18
STANDARD ROAD PLAN		EC-104
		SHEET 1 of 1

REVISIONS: Added Designer Info button.

Steve Miller
APPROVED BY DESIGN METHODS ENGINEER

TURF REINFORCEMENT MAT (TRM)