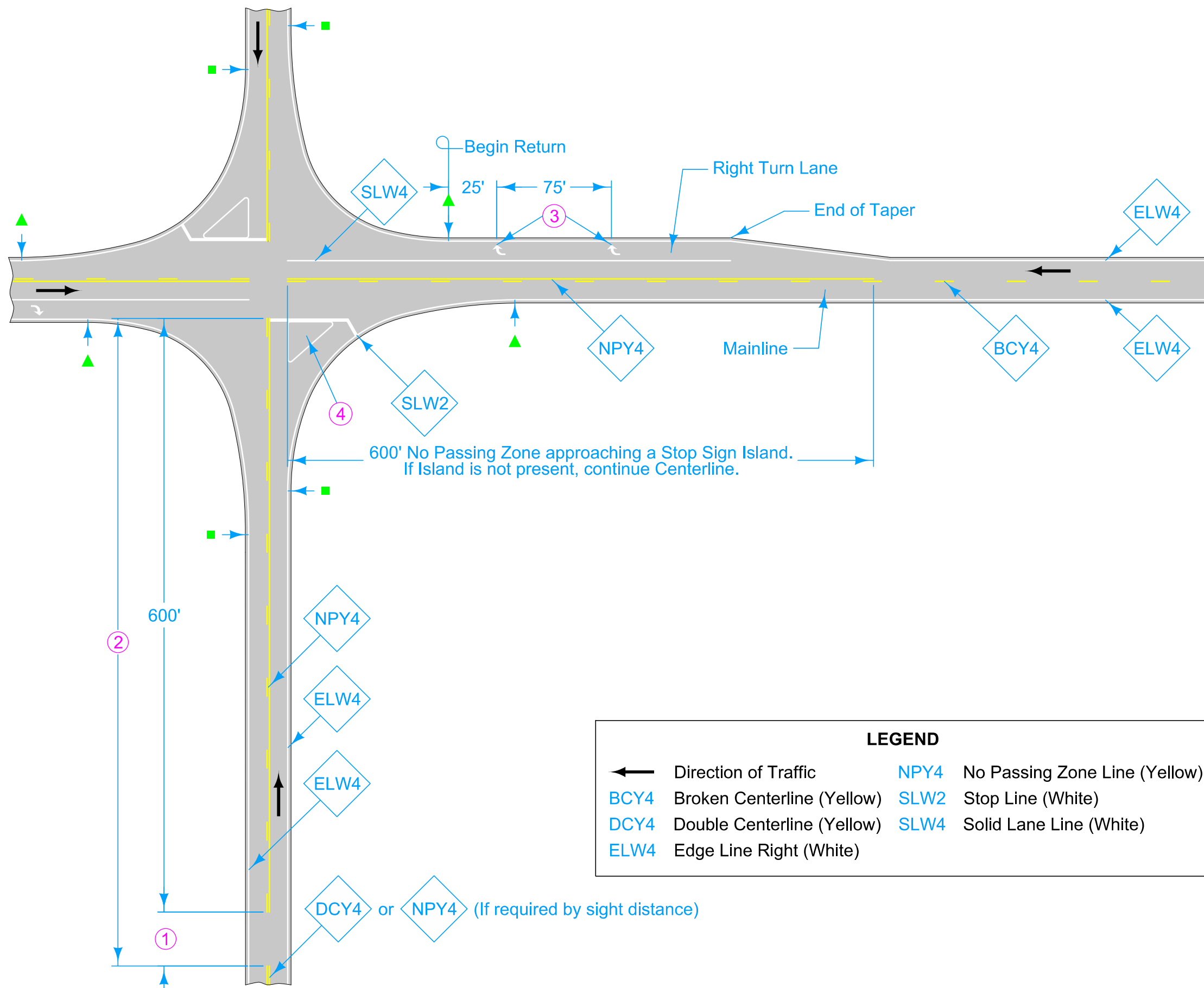


# DESIGNER INFORMATION



Roadways may or may not have edge lines. When the free flow roadway has edge lines but the stop controlled roadway does not, end edge lines at the end of returns (marked by ▲s). When the stop controlled roadway has edge lines but the free flow roadway does not, end edge lines at the end of returns (marked by ■s). If both roadways have edge lines, continue edge lines around the returns.

Terminate all mainline centerline markings at the edge of the thru lanes of the side road.

Start Solid Lane Line for Right Turn Lane at end of taper.

For line information, see [PM-110](#).

For symbol and legend information, see [PM-111](#).

- ① If less than 400 feet, join Yellow Lines.
- ② If less than 1000 feet, extend Yellow Line to Stop Line.
- ③ Symbol and Legend (when listed in 108-29).
- ④ For Island information, see [PM-120](#).

Possible Contract Items:  
 Pavement Marking Line Items  
 Pavement Marking Symbol and Legend Items

Possible Tabulations:  
[108-22](#)  
[108-29](#)

LEGEND	
←	Direction of Traffic
BCY4	Broken Centerline (Yellow)
DCY4	Double Centerline (Yellow)
ELW4	Edge Line Right (White)
NPY4	No Passing Zone Line (Yellow)
SLW2	Stop Line (White)
SLW4	Solid Lane Line (White)

DCY4 or NPY4 (If required by sight distance)

	REVISION	
	1	10-15-19
<b>STANDARD ROAD PLAN</b>		<b>PM-521</b>
REVISIONS: New logo.		SHEET 1 of 1
APPROVED BY DESIGN METHODS ENGINEER		
<b>TWO-LANE ROADWAY                  WITH RIGHT TURN LANES</b>		