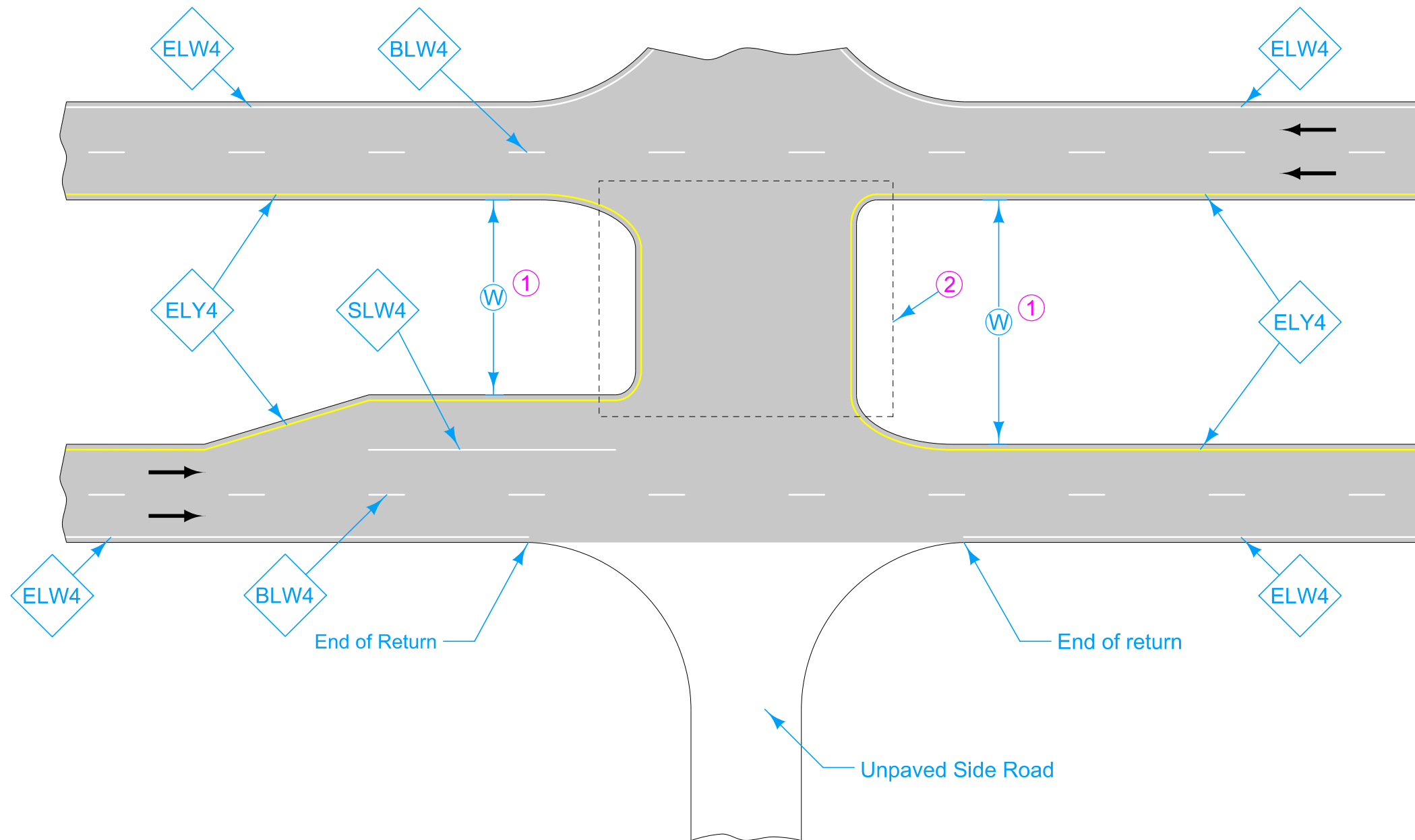


DESIGNER INFORMATION

For line information, see [PM-110](#).

- ① W is the width between pavement edges. Measure W from pavement edge to pavement edge. When W values are different, use the smaller of the two.
- ② See [PM-760](#) for markings placed in the median.



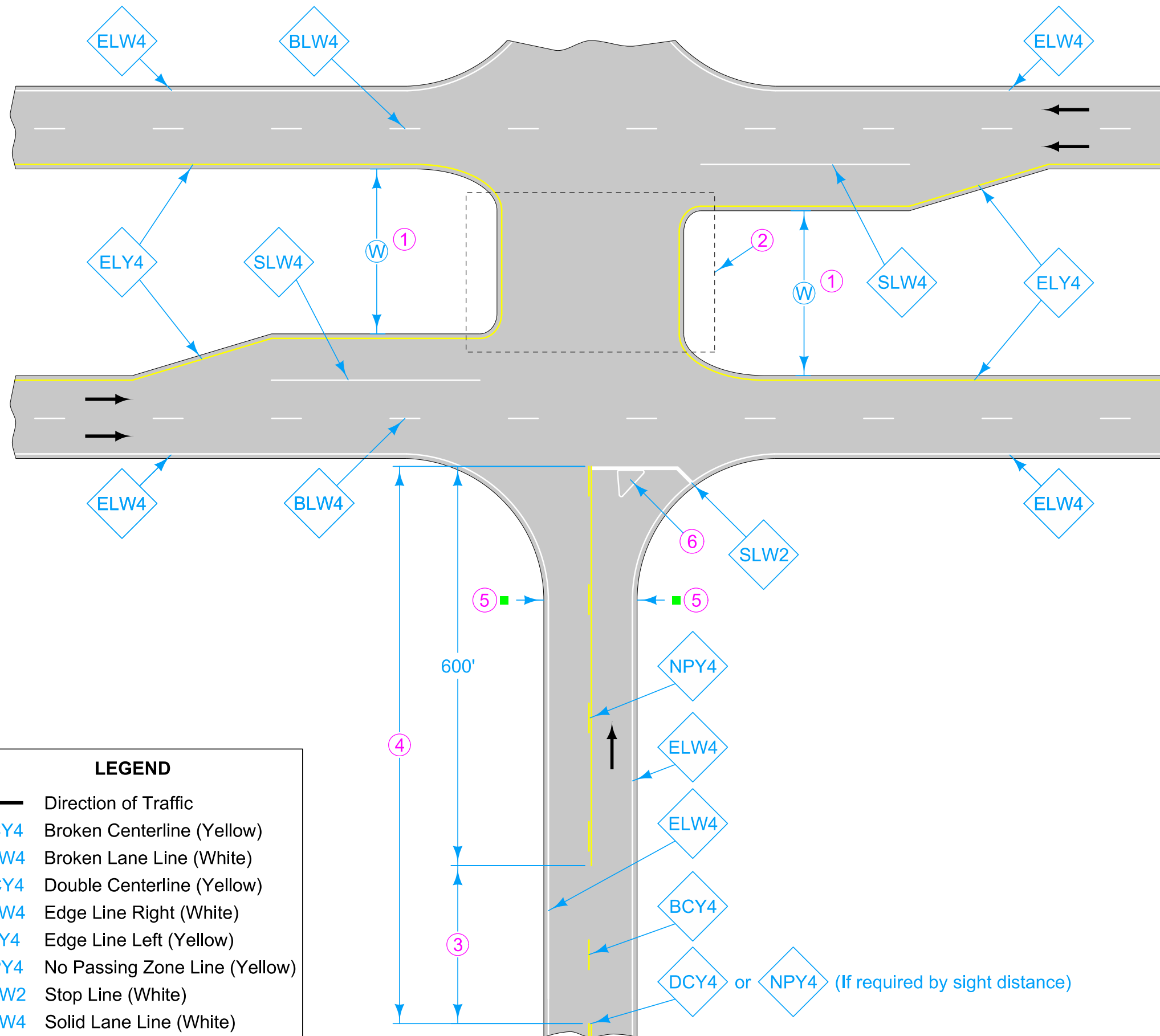
LEGEND	
←	Direction of Traffic
BLW4	Broken Lane Line (White)
ELW4	Edge Line Right (White)
ELY4	Edge Line Left (Yellow)
SLW4	Solid Lane Line (White)

UNPAVED SIDE ROAD

Possible Contract Item:
Pavement Marking Line Items

Possible Tabulation:
108-29

	REVISION	
	1	10-15-19
STANDARD ROAD PLAN		PM-562
REVISIONS: New logo.		SHEET 1 of 2
 APPROVED BY DESIGN METHODS ENGINEER		
DIVIDED MULTI-LANE ROADWAY WITH LEFT TURN LANES		



- ① W is the width between pavement edges. Measure W from pavement edge to pavement edge. When W values are different, use the smaller of the two.
- ② See [PM-760](#) for markings placed in the median.
- ③ If less than 400 feet, join Yellow Lines.
- ④ If less than 1000 feet, extend Yellow Line to Stop Line.
- ⑤ When the free flow roadway has edge lines but the stop controlled roadway does not, end edge lines at the end of returns (marked by ■s). If both roadways have edge lines, continue edge lines around the returns.
- ⑥ If Island present, see [PM-120](#).

LEGEND	
←	Direction of Traffic
BCY4	Broken Centerline (Yellow)
BLW4	Broken Lane Line (White)
DCY4	Double Centerline (Yellow)
ELW4	Edge Line Right (White)
ELY4	Edge Line Left (Yellow)
NPY4	No Passing Zone Line (Yellow)
SLW2	Stop Line (White)
SLW4	Solid Lane Line (White)

TWO-LANE PAVED SIDE ROAD

	REVISION
	1 10-15-19
STANDARD ROAD PLAN	PM-562
REVISIONS: New logo.	SHEET 2 of 2
 APPROVED BY DESIGN METHODS ENGINEER	
DIVIDED MULTI-LANE ROADWAY WITH LEFT TURN LANES	