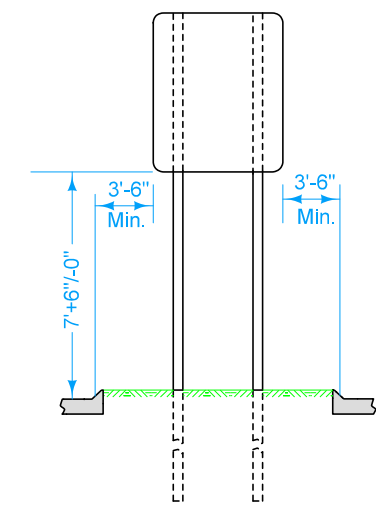
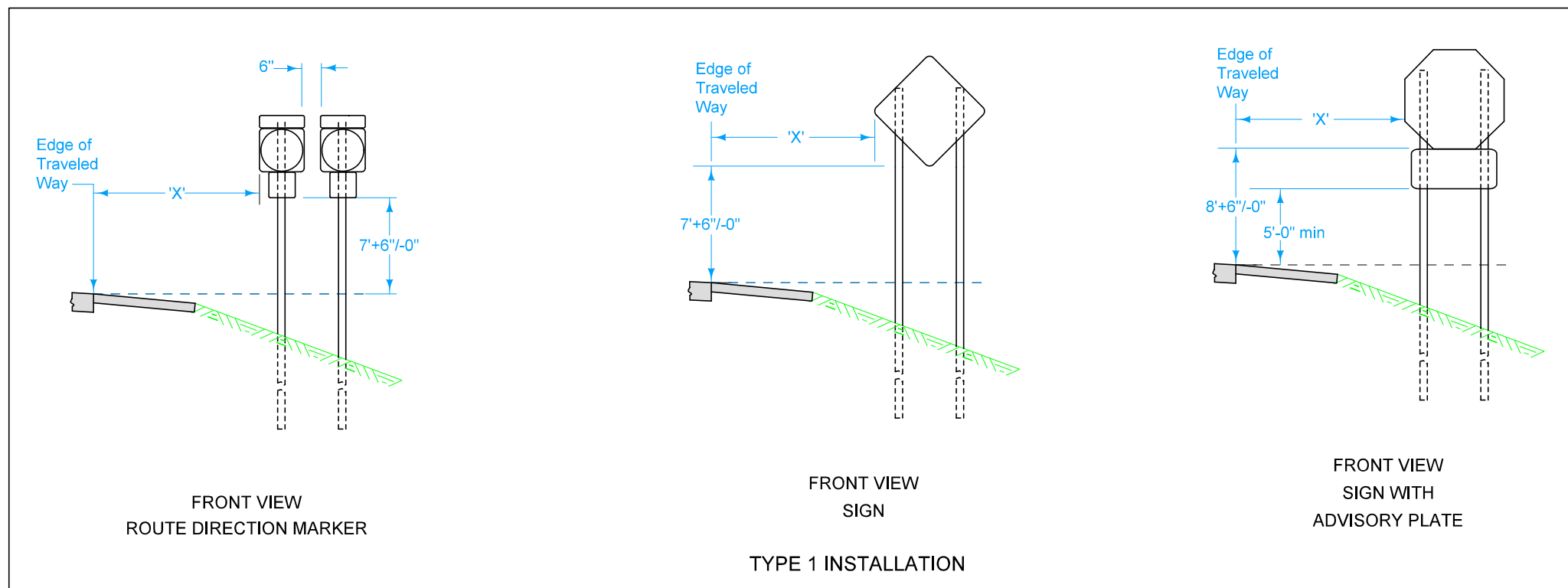


Final sign location will be at the discretion of the Engineer.

Use the Type 1 installation in any case except where:

- (A) Specified otherwise in the plans.
- (B) Directed otherwise by the Engineer.
- (C) A Type 3 installation is required due to location in an island or gore area.



FRONT VIEW
SIGN LOCATION
Type 3 Installation


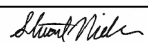
Type 3 installation is intended to show the requirements for a Type 'A' sign when installed in an island or median (where traffic passes on both sides of the sign) as well as for locations where the Type 'A' sign is installed adjacent to a curbed roadway (sign may be located on either side of a roadway as specified in project plans).

Possible Contract Items:

- Remove and Reinstall Sign as per plan
- Wood Posts for Type A or B signs, 4in x 6in
- Perforated Square Steel tube Post (Anchor Series)
- Type A Signs, Sheet Aluminum
- Install Type A Sign

Possible Tabulations:

- 190-51
- 190-61
- 190-62
- 190-66

 STANDARD ROAD PLAN	REVISION	
	1	04-19-16
	SI-101	
SHEET 1 of 1		
REVISIONS: Changed Lane Edge Line' to 'Edge of Traveled Way'. Replaced 'Y' with numerical value including tolerance. Removed advisory sign from middle view.		
 APPROVED BY DESIGN METHODS ENGINEER		

**LOCATIONS-
TYPE 'A' SIGNS**