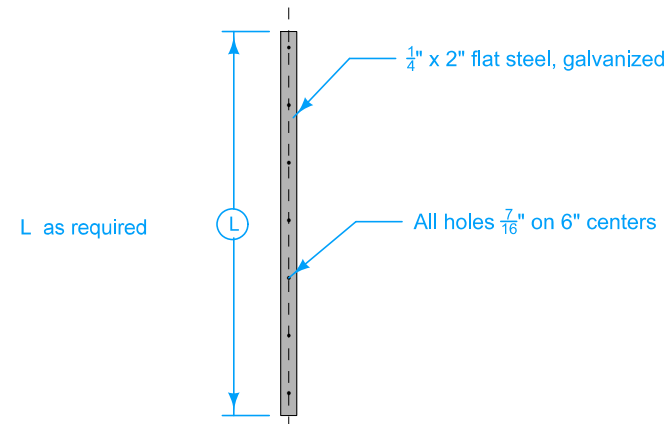
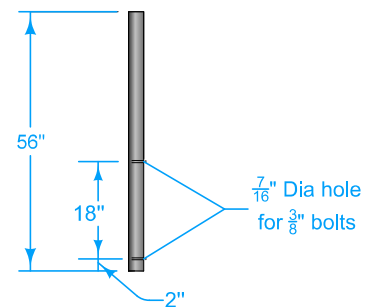


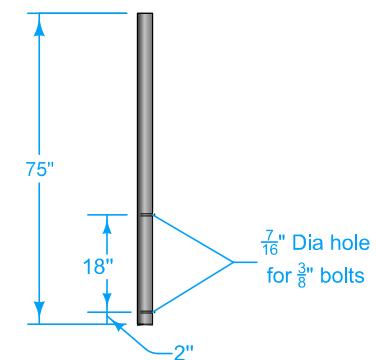
Bid price for the brackets is to include the necessary mounting bolts, washers, nuts, and set screws.



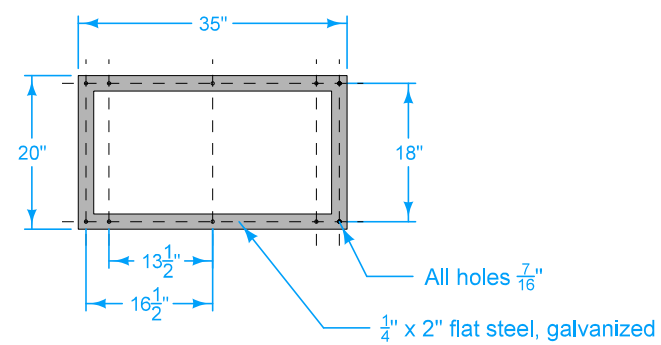
AUXILIARY  
SIGN MOUNTING BAR  
Type 1



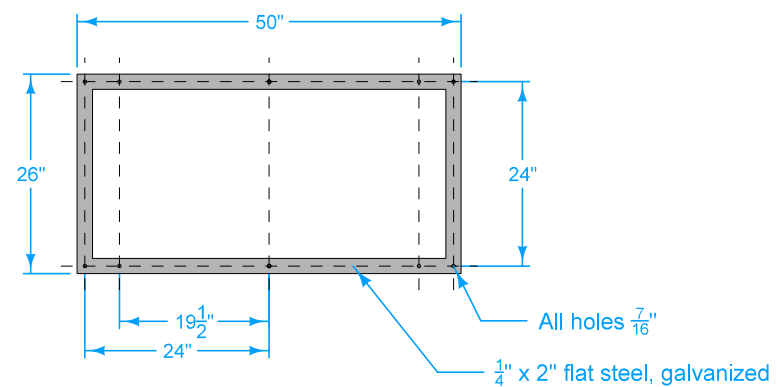
PIPE DETAIL  
(Bracket 'F')  
Type 4A



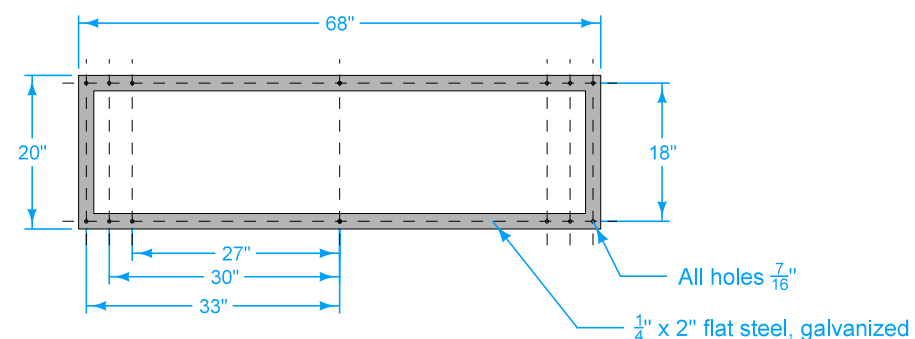
PIPE DETAIL  
(Bracket 'F1')  
Type 4B



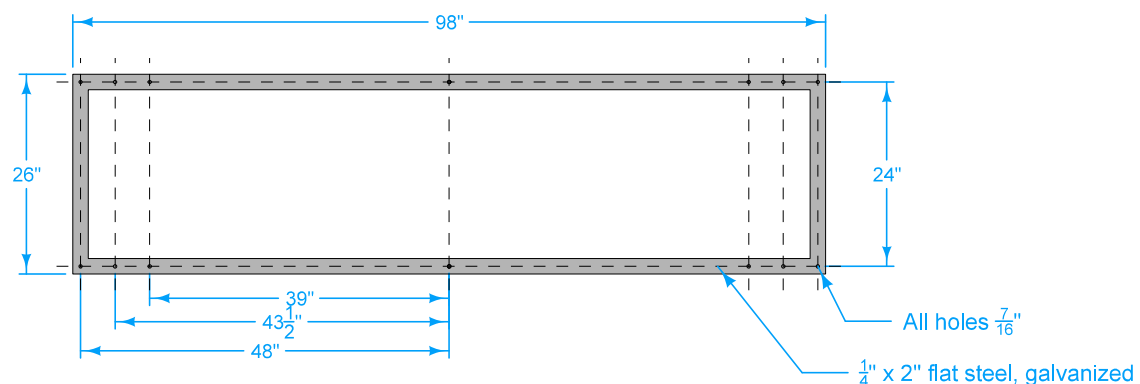
ONE POST  
SIGN MOUNTING BRACKET  
FOR 24" ROUTE SHIELDS  
Type 2



ONE POST  
SIGN MOUNTING BRACKET  
FOR 36" ROUTE SHIELDS  
Type 5

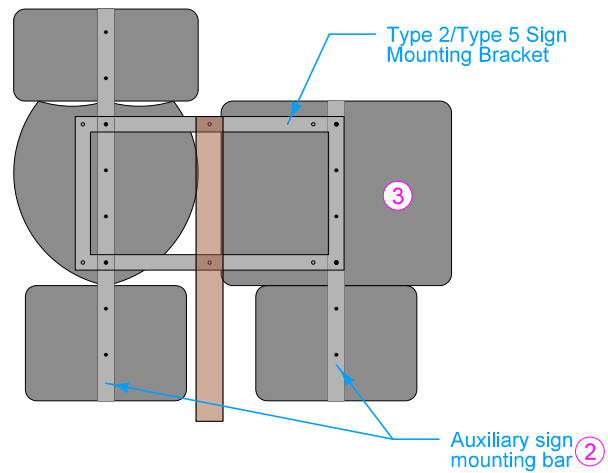
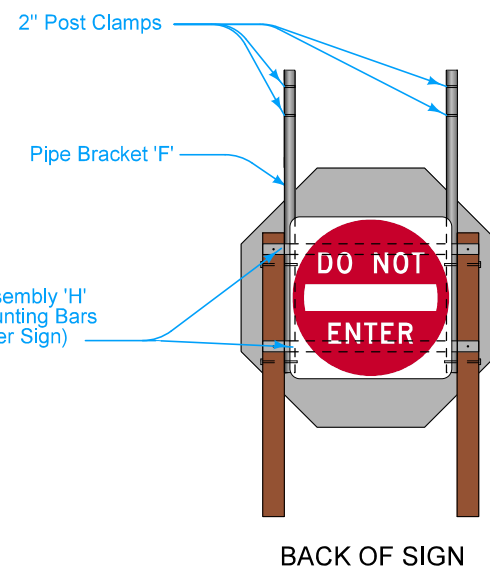
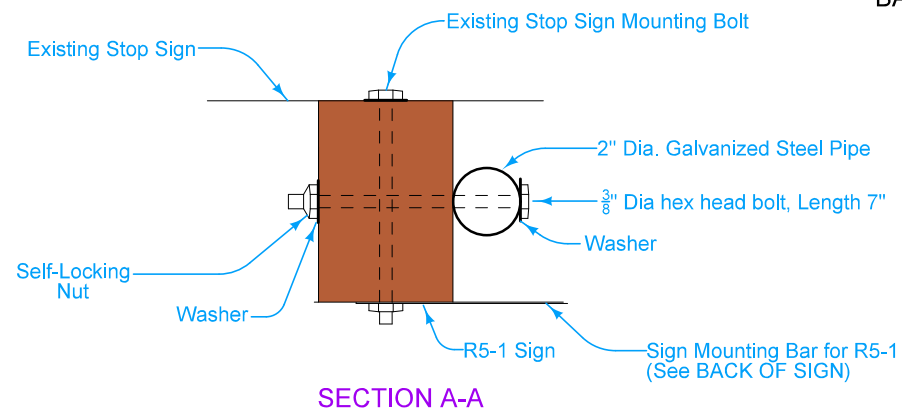
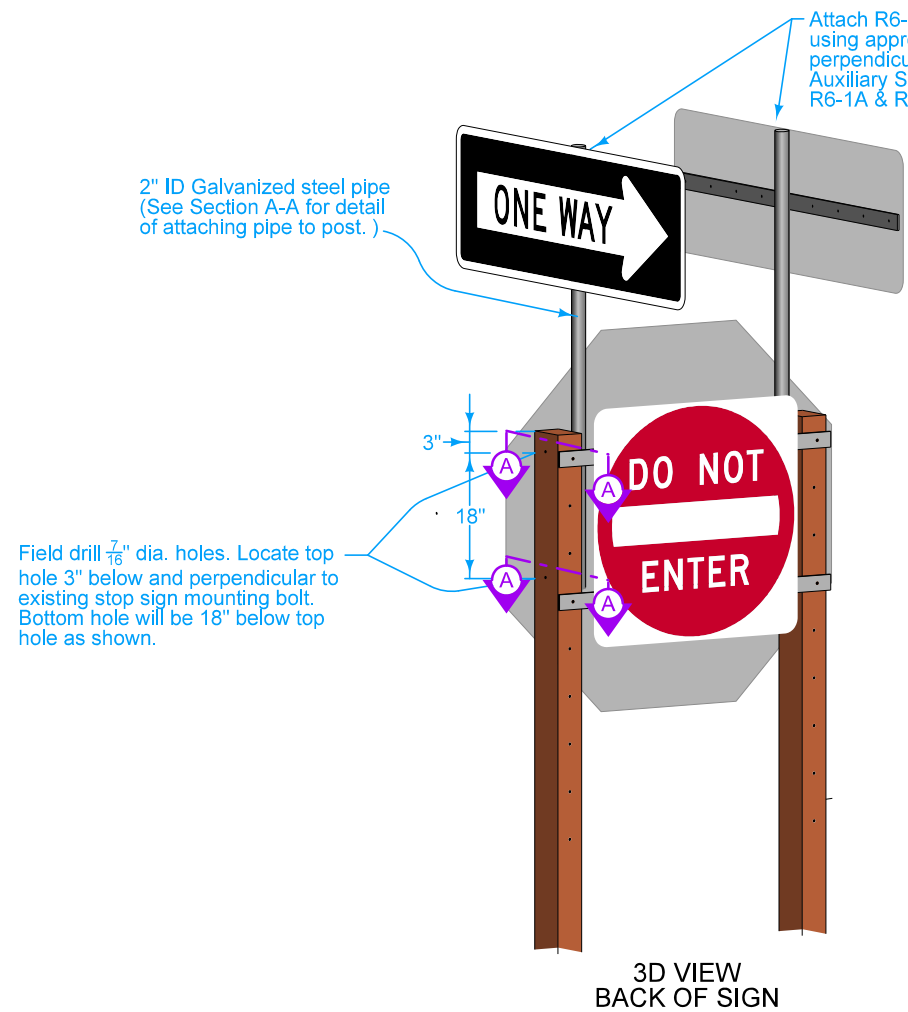


TWO POST  
SIGN MOUNTING BRACKET  
FOR 24" ROUTE SHIELDS  
Type 3

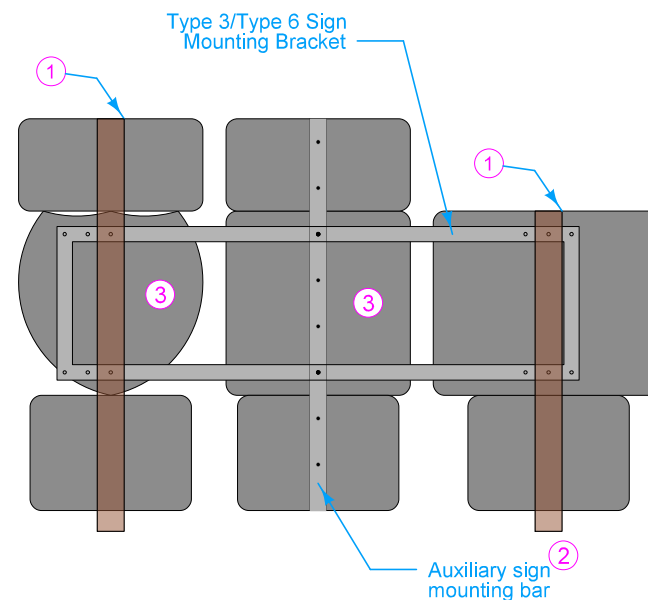


TWO POST  
SIGN MOUNTING BRACKET  
FOR 36" ROUTE SHIELDS  
Type 6

	REVISION	
	3	10-17-17
<b>STANDARD ROAD PLAN</b>		<b>SI-119</b>
		SHEET 1 of 2
REVISIONS: Auxiliary sign mounting brackets have been added to 3D VIEW BACK OF SIGN on page 2.		
APPROVED BY DESIGN METHODS ENGINEER		
<b>SUPPORT STRUCTURES - MOUNTING BRACKETS</b>		



TYPICAL MOUNTING BRACKET ARRANGEMENT  
FOR SINGLE WOOD POST INSTALLATION



TYPICAL MOUNTING BRACKET ARRANGEMENT  
FOR TWO WOOD POST INSTALLATION

- 1 Mount the wood post so that the top is flush with the top of the sign panel.
- 2 Extend the Auxiliary Sign Mounting Bracket to the full length of the proposed mounted sign assembly.
- 3 Maintain a 3 inch space between Route Shields. This should be accomplished by using different drilled holes specified on the brackets, and will vary depending on the number of 2 or 3 digit signs in the assembly.
- 4 Perforated square steel tube (PSST) posts may be substituted for wood posts if approved by the Engineer.

 <b>STANDARD ROAD PLAN</b>	REVISION	
	3	10-17-17
	<b>SI-119</b>	
SHEET 2 of 2		

REVISIONS: Auxiliary sign mounting brackets have been added to 3D VIEW BACK OF SIGN on page 2.

*Steve Miller*  
APPROVED BY DESIGN METHODS ENGINEER

**SUPPORT STRUCTURES -  
MOUNTING BRACKETS**