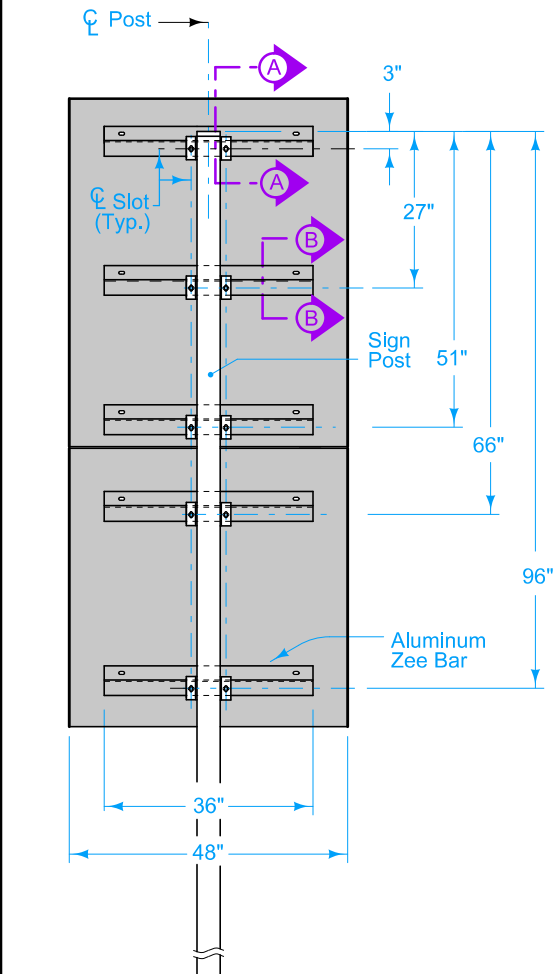


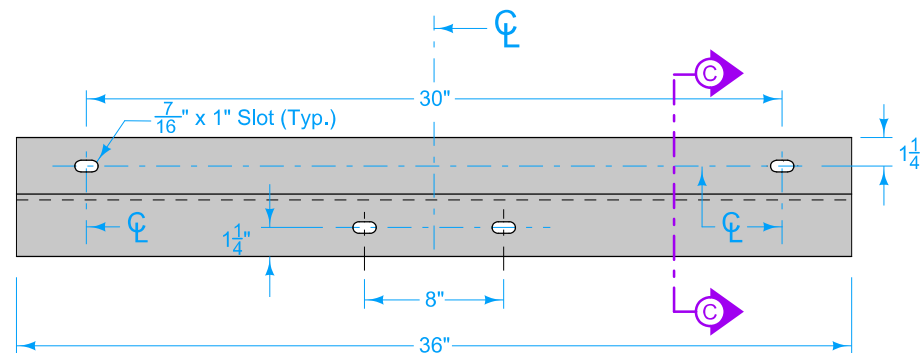
PLAN

*NOTE: Treated Wood or Perforated Square Tube Post

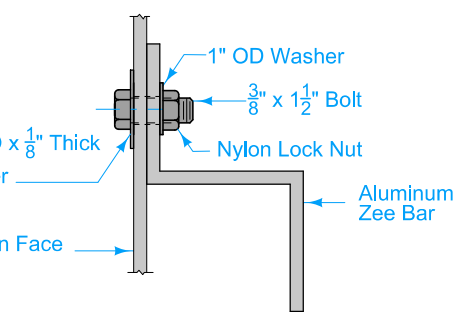
**WOOD OR PERFORATED SQUARE
TUBE POST ATTACHMENT**



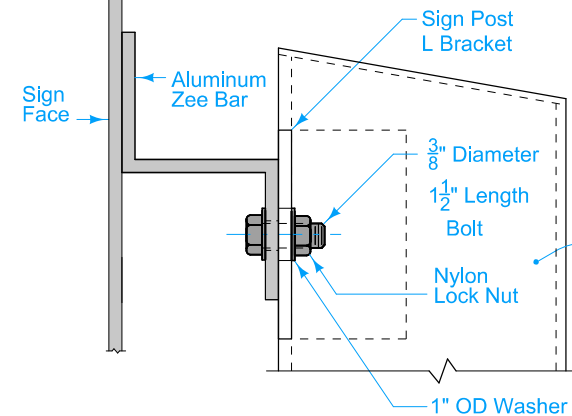
**BACK ELEVATION
4\"/>**



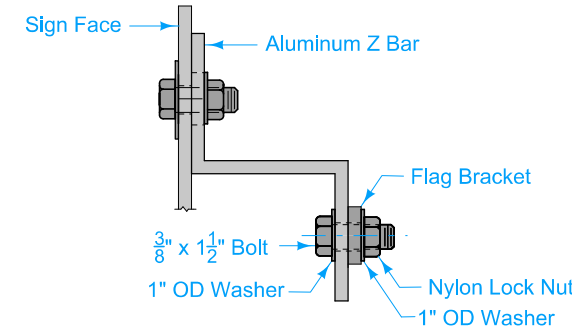
ALUMINUM ZEE BAR



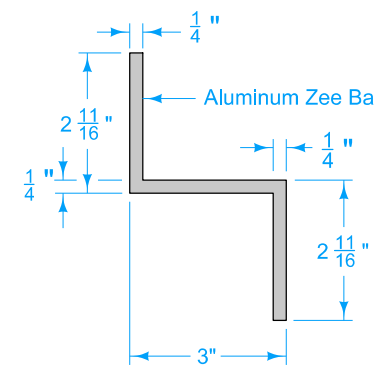
SECTION B-B



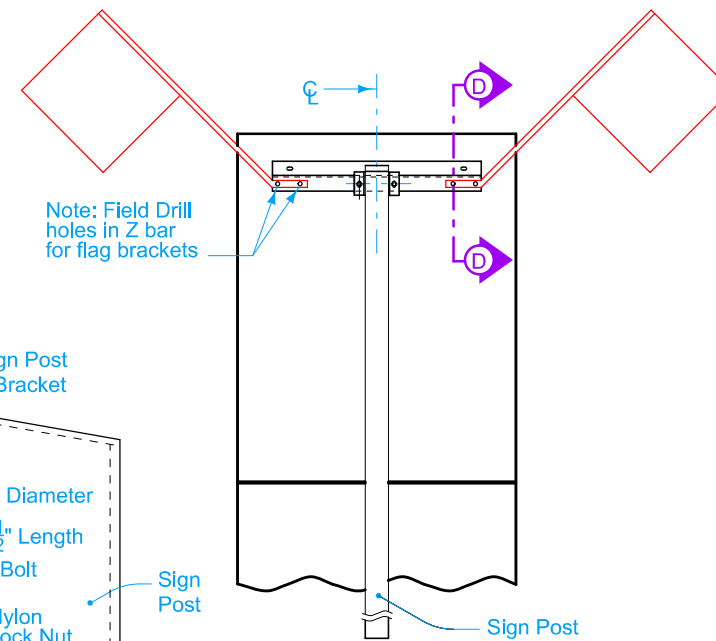
SECTION A-A



SECTION D-D



SECTION C-C



**BACK ELEVATION
ATTACHMENT DETAILS
FOR FLAGS**

Refer to SI-114 for details of steel breakaway sign post rectangular tube.

Possible Contract Items:
Steel Breakaway Sign Post
Wood Sign Post

	REVISION	
	4	10-18-16
	SI-131 SHEET 1 of 1	
REVISIONS: Replaced old Iowa DOT logo with new logo.		
 APPROVED BY DESIGN METHODS ENGINEER		

**INSTALLATION -
TYPE 'A' SIGNS**