

Price bid for "Permanent Road Closure, Rural, SI-181" includes furnishing and installing the barricade, signs, posts, and hardware.

The length will be measured in linear feet based on the width of standard sign panels installed.

The Contractor will be paid the contract unit price per linear foot.

Minimum Barricade length = design width (W).

① Design width (W) equals width of existing roadway and shoulders.

② Install posts according to Section 2524.03.B.1 of the Standard Specifications.

③ Assemble the wood frame with standard strength, hot dip galvanized bolts, nuts and washers according to the following specifications:

- Bolts - ASTM A307
- Nuts - ASTM A563
- Washers - ASTM F884
- Galvanization - ASTM F2329.

④ Recess all bolt heads in a 1 1/4 inch diameter x 1/2 inch deep hole to allow sign panels to lay flush on the planks.

⑤ Use 0.063 inch aluminum blank for sign panel. Install sign panel meeting the requirements of Section 2524 of the Standard Specifications. Attach sign panels to the planks along the top and bottom at 2 foot centers using #10 x 1 1/4 inch self-drilling, phillips, pan head, 18-8 stainless steel screws. Use a 1 in. OD x 1/8 in. thick neoprene washer between the sign panel and the treated wood plank to prevent corrosion.

⑥ Use pressure treated 4 in. x 4 in. x 12 ft. nominal boards for posts, and pressure treated 2 in. x 10 in. x variable length nominal boards for planks. Use planks of sufficient length to span at least 2 posts.

Possible Contract Item:
Permanent Road Closure, Rural, SI-181

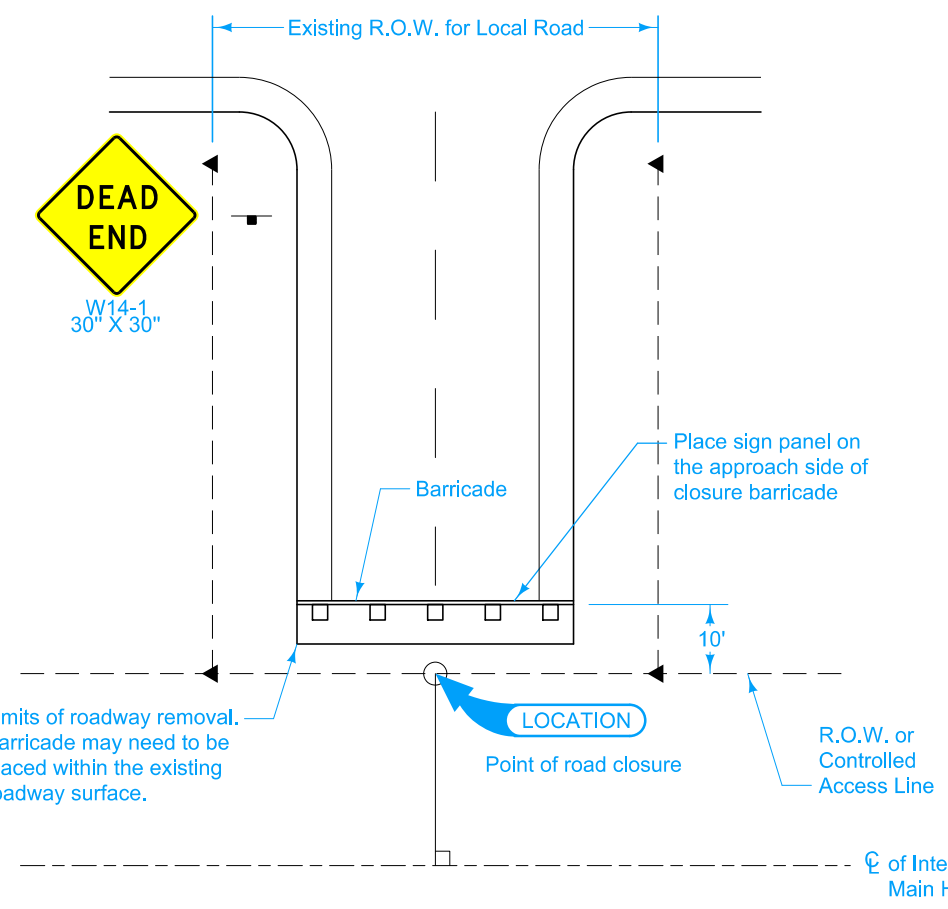
Possible Tabulation:
102-4

IOWA DOT	REVISION	
	2	10-18-16
STANDARD ROAD PLAN		SI-181
		SHEET 1 of 1

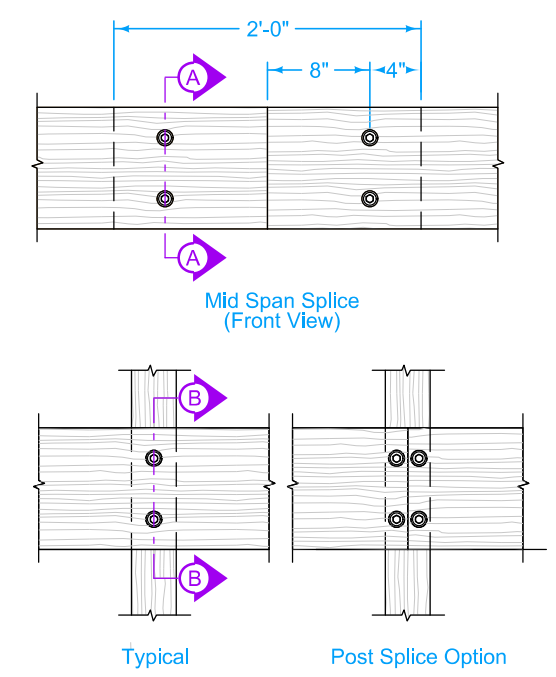
REVISIONS: Replaced old Iowa DOT logo with new logo.

Steve Miller
APPROVED BY DESIGN METHODS ENGINEER

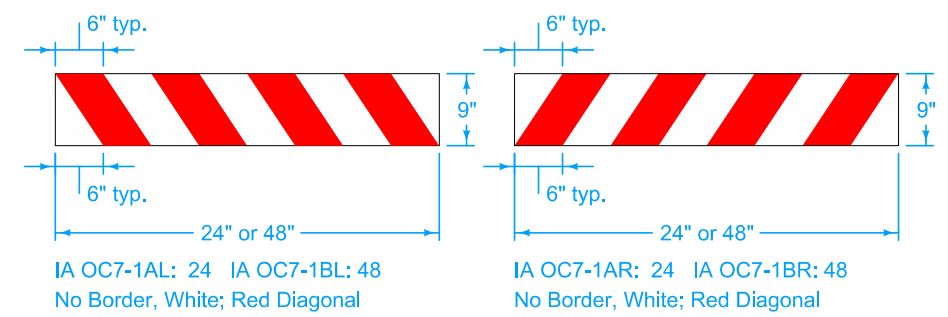
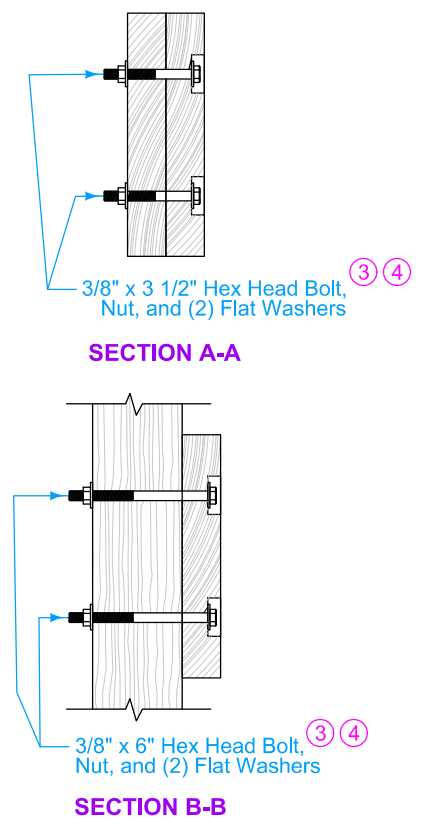
PERMANENT ROAD CLOSURE - RURAL



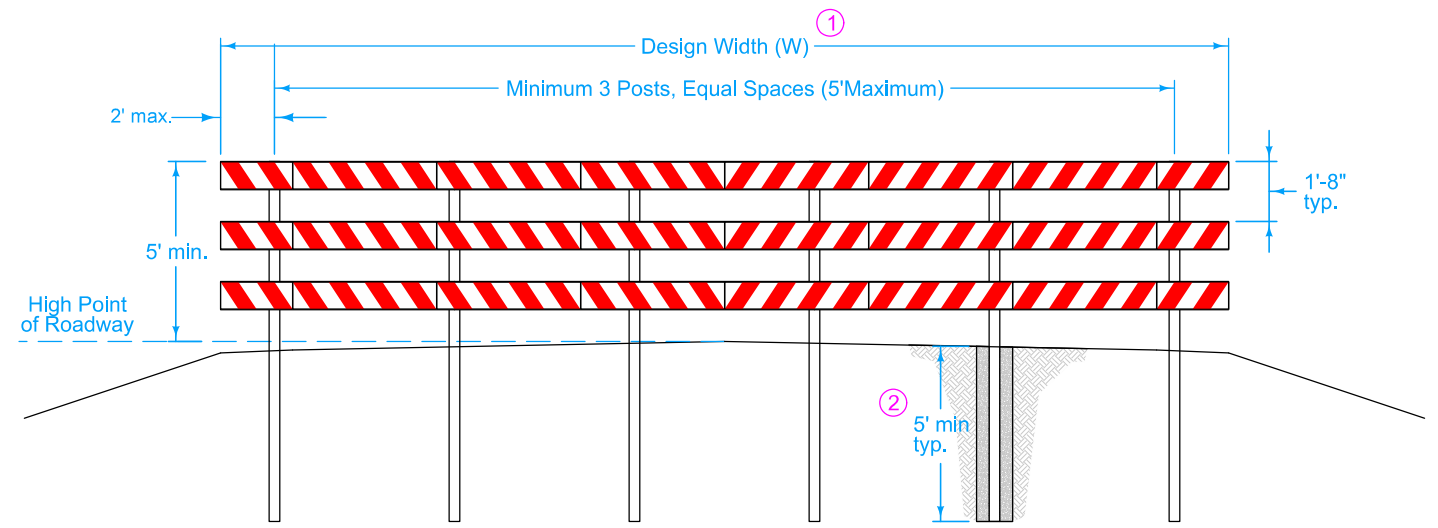
PLAN - INSTALLATION



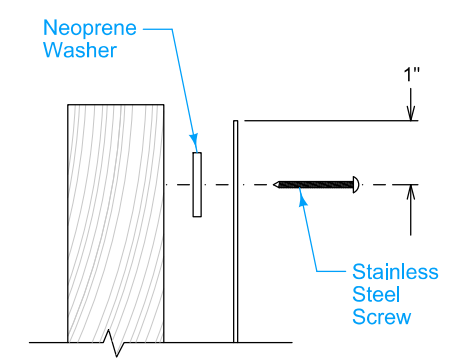
WOOD FRAME ASSEMBLY



SIGN PANEL FABRICATION



APPROACH VIEW



SIGN PANEL INSTALLATION