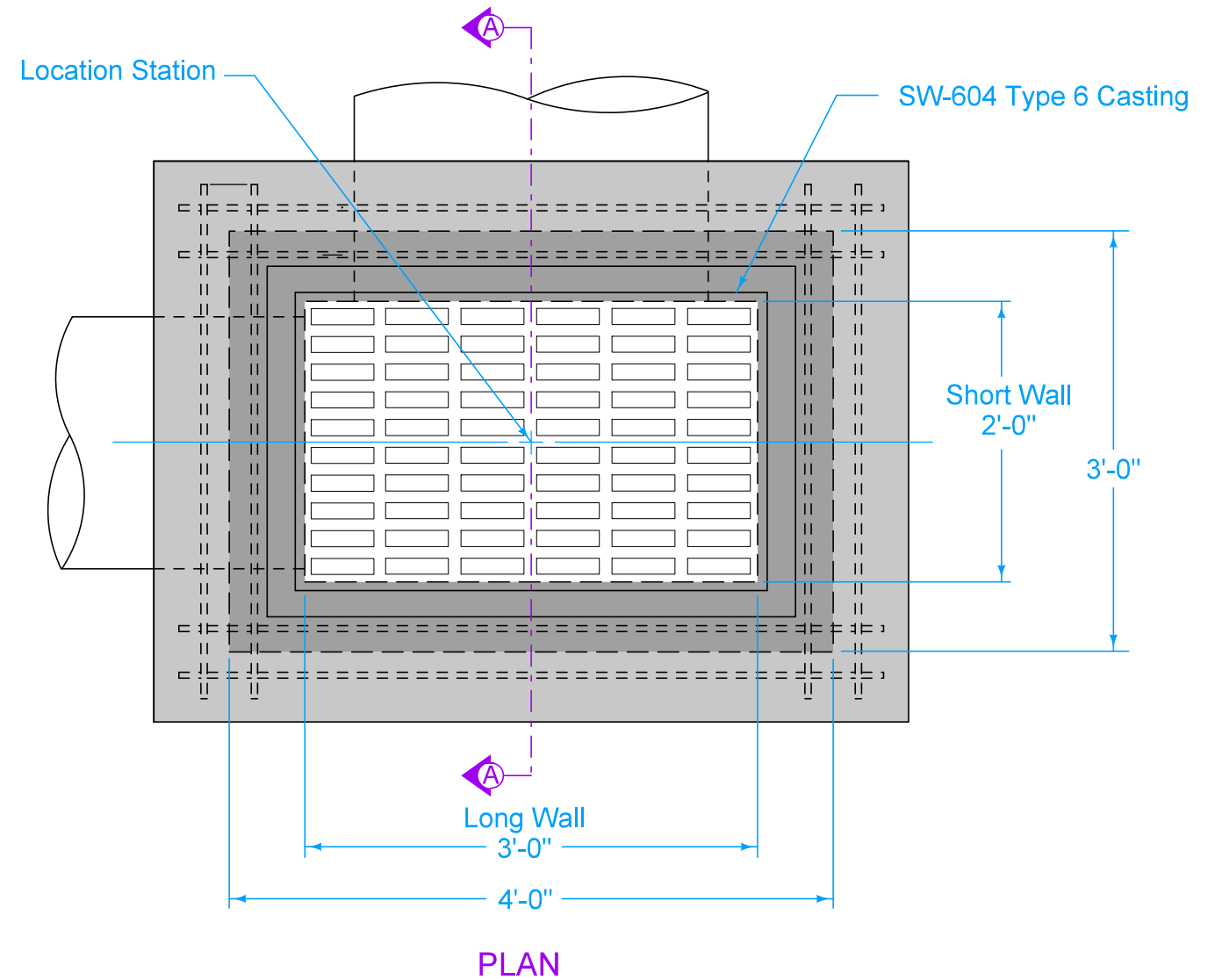


SECTION A-A

MAXIMUM PIPE DIAMETERS		
Pipe Location	Precast Structure	Cast-in-place Structure
Short Wall	15"	18"
Long Wall	24"	30"

- ① Install four #4 diagonal bars at all pipe openings.
- ② Cast-in-place base shown. If base is precast integral with walls, the footprint of the base is not required to extend beyond the outer edge of the walls.
- ③ 12 inch minimum wall height above all pipes.



PLAN

FIGURE 6010.511 SHEET 1 OF 1

SUDAS	IOWA DOT	REVISION	
		2	04-21-20
FIGURE 6010.511	STANDARD ROAD PLAN	SW-511	
SHEET 1 of 1			
REVISIONS: Added Class I Bedding Material.			
Paul D. Wrigand SUDAS DIRECTOR		Shawn Miller DESIGN METHODS ENGINEER	
RECTANGULAR AREA INTAKE			