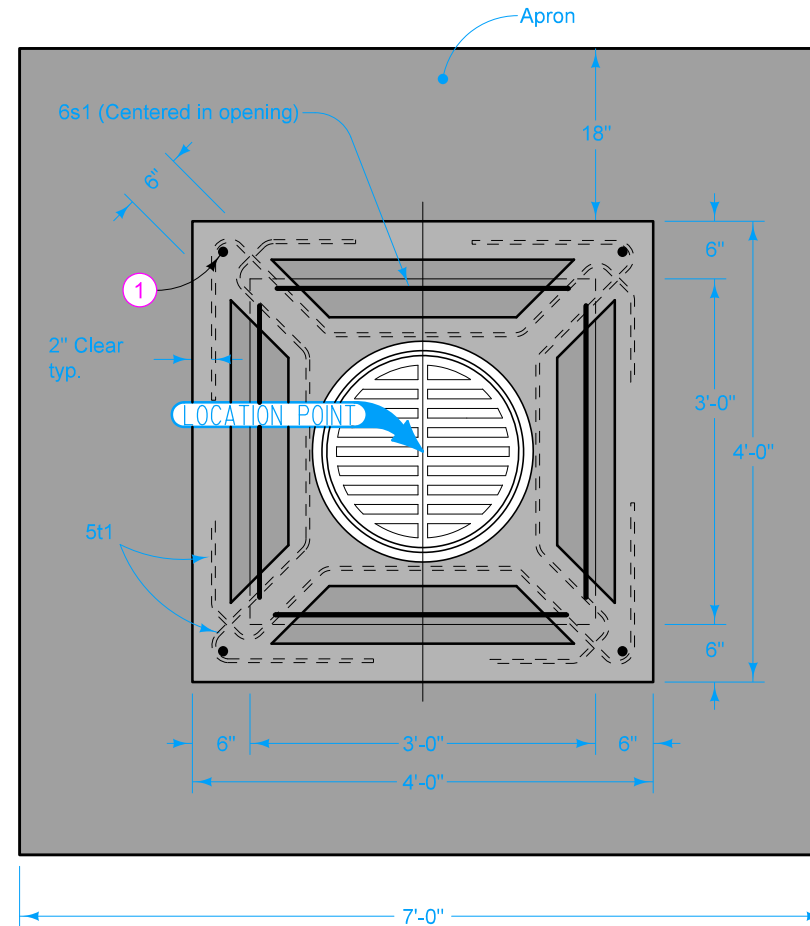
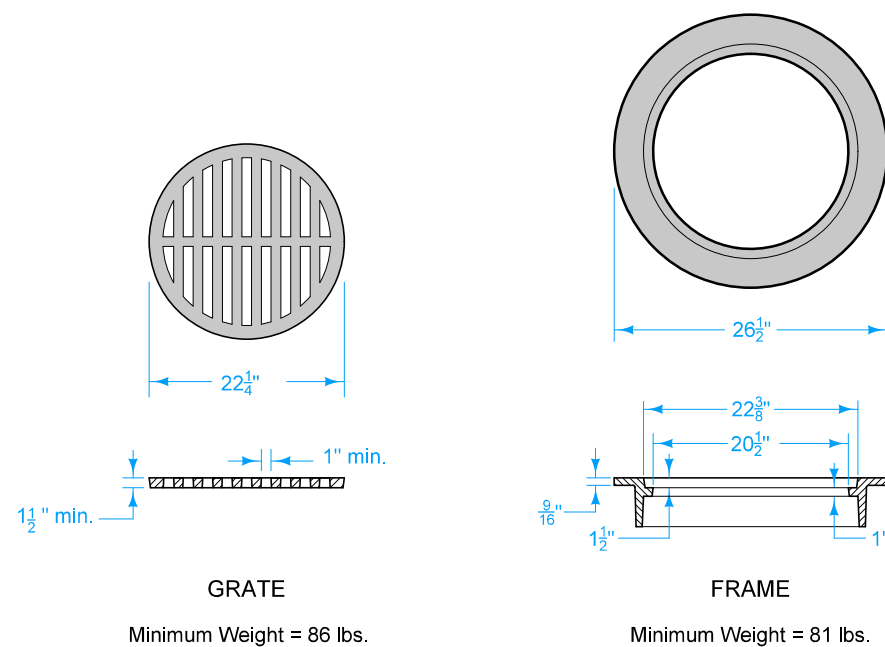
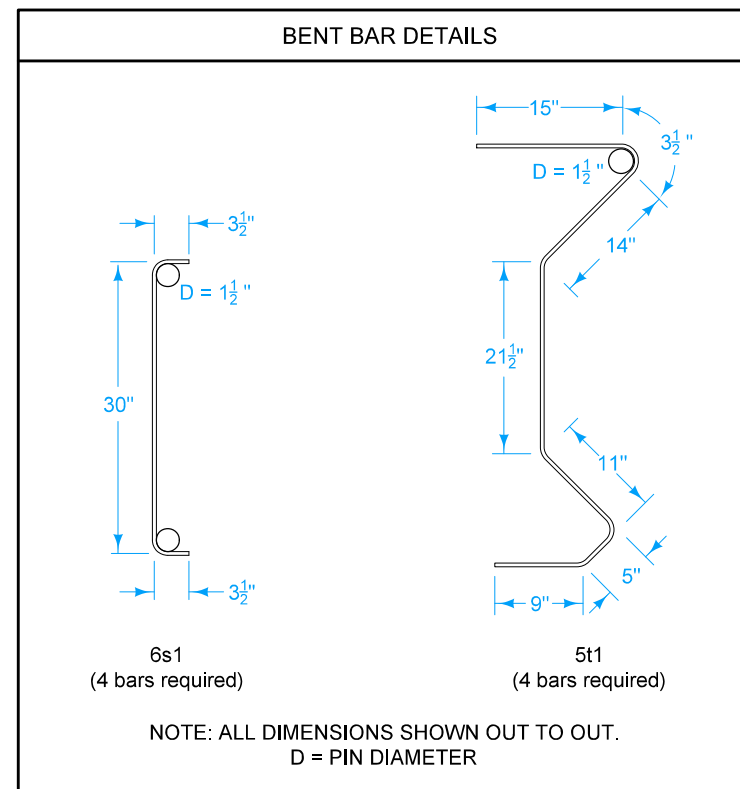


TYPICAL SECTION



PLAN



Top of intake may be poured in the field or precast. For precast units, place a 1 inch diameter X 3 inch deep alignment hole 3 inches from each side of the corners of the unit.

Maximum pipe size 18 inches.

- ① Four #6 X 9 inch alignment pins (precast tops only).
- ② 12 inch minimum wall height above all pipes.

 <b>STANDARD ROAD PLAN</b>	REVISION	
	3	04-17-18
	<b>SW-562</b>	
SHEET 1 of 1		
REVISIONS: Changed the title. Added a Concrete Fillet. Added maximum pipe size.		
 APPROVED BY DESIGN METHODS ENGINEER		

**VERTICAL THROAT AREA INTAKE  
(SMALL BOX)**