

See Sheets 2 and 4 for Details

See Sheets 3 and 4 for Details

OVERVIEW OF CROSSOVER

Place Two-Way Traffic symbol and DO NOT PASS signs alternately on both sides of the roadway at a maximum of one-half mile intervals for both directions of travel. Always have signs in sight of motorists.



When the Average Daily Traffic (ADT) exceeds 20,000 vehicles per day or when a traffic queue extends beyond the advanced signing, place RIGHT/LEFT LANE CLOSED 4 MILES and RIGHT/LEFT LANE CLOSED 2 MILES signs (W20-5) on both sides of the roadway 4 miles and 2 miles in advance of the lane closure, respectively, as appropriate.

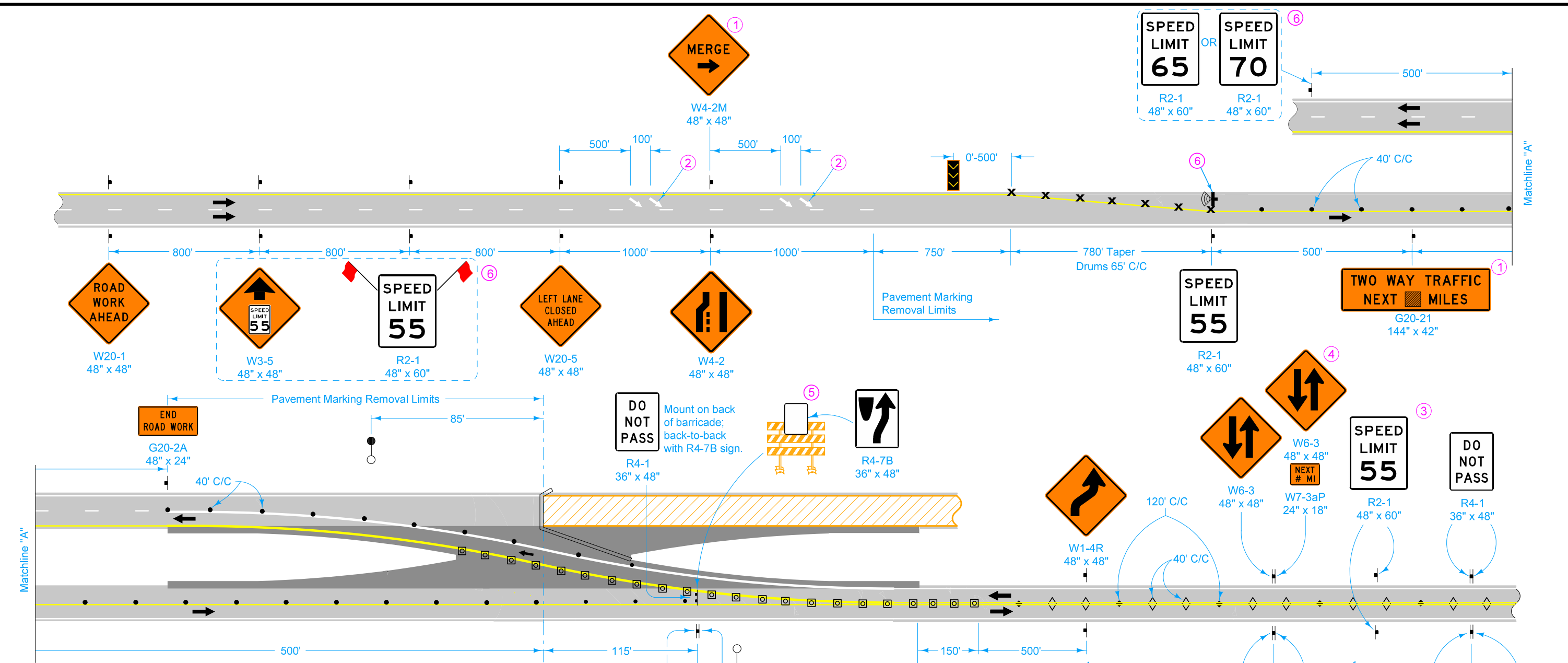
Possible Contract Items:

- Painted Symbols and Legends
- Pavement Marking Items
- Pavement Marking Removed
- Safety Closures
- Temporary Floodlighting
- Temporary Lane Separator System
- Traffic Control

Possible Tabulations:

[108-13A](#), [108-22](#), [108-27](#), [108-29](#), [108-30](#), [108-33](#), [108-35](#)

	REVISION	
	16	04-19-22
STANDARD ROAD PLAN		TC-61
REVISIONS: Removed TBR and crash cushion.		SHEET 1 of 5
 APPROVED BY DESIGN METHODS ENGINEER		
TWO-LANE, TWO WAY OPERATION		



LEGEND	
	Traffic Sign
	Drum
	42" Channelizer
	Channelizer Marker
	Tubular Marker
	Speed Feedback Sign
	Arrow Board
	Safety Closure (Refer to TC-252)
	Temporary Floodlighting
	Work Area
	Direction of Traffic
	Detour Pavement
	Temporary Lane Separator System

See sheet 4 for supplemental drawings.

- ① Refer to [SI-881](#) for sign details.
- ② Refer to [PM-111](#) for arrow details.
- ③ Space Speed Limit signs at one-mile intervals.
- ④ Install an additional supplemental plaque with the message NEXT X MILES on the Two-Way Traffic symbol sign assembly on the right side of the roadway to inform motorists of the remaining length of two-lane traffic. Round X to the nearest whole-mile increment.

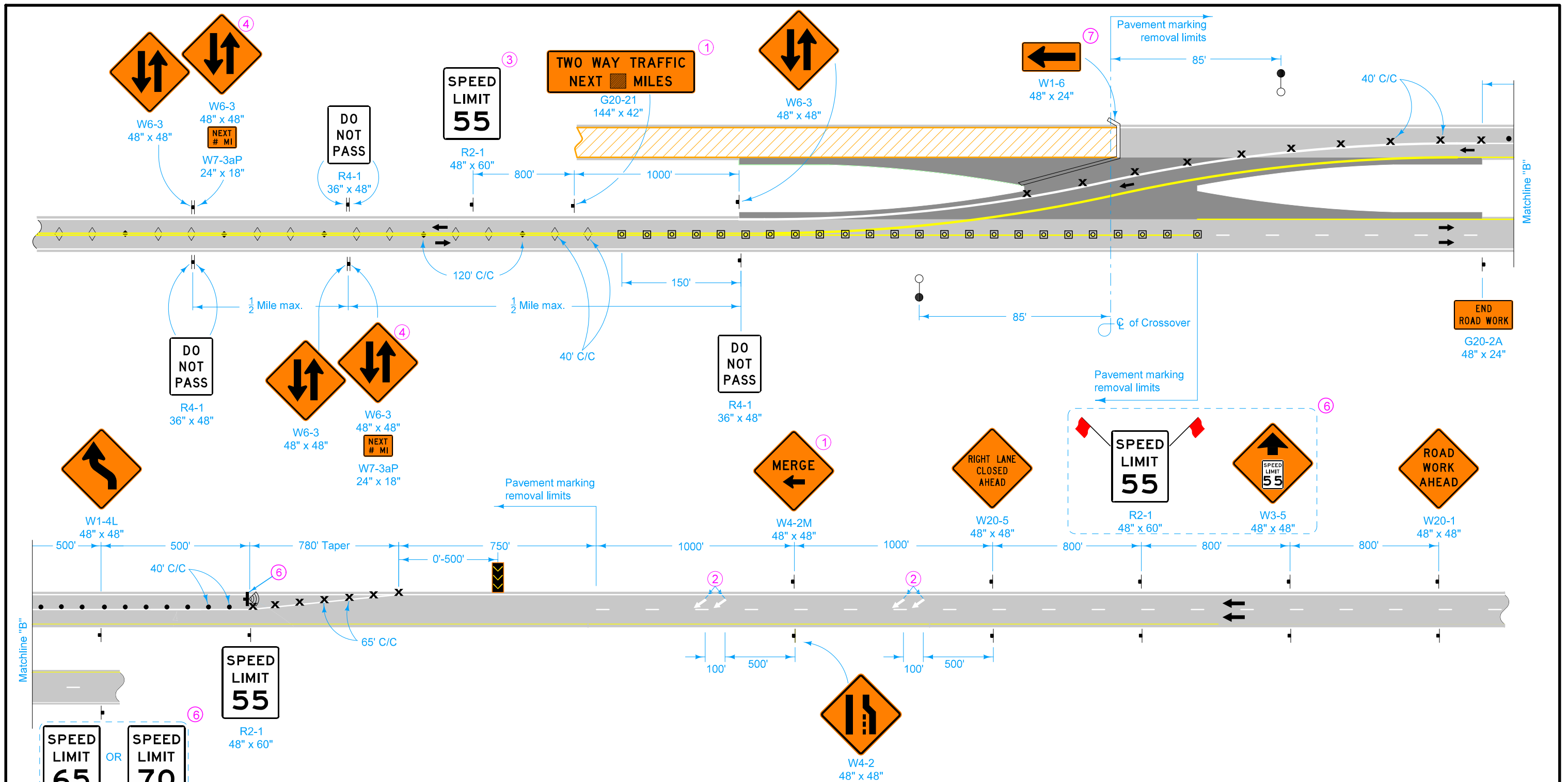
- ⑤ Use a 4 foot wide Type III Barricade.
- ⑥ For roadways with a posted speed limit of 60 mph or greater before road work:

Place SPEED LIMIT AHEAD sign and SPEED LIMIT 55 sign prior to the lane closure as shown. Place SPEED LIMIT 65 or 70 beyond the work area as shown.

Remove or cover all existing signs that conflict with 55 mph speed limit while 55 mph speed limit is in effect.

Place Speed Feedback Sign at the end of the merge taper.

	REVISION 16 04-19-22
	TC-61
STANDARD ROAD PLAN	
SHEET 2 of 5	
REVISIONS: Removed TBR and crash cushion.	
 APPROVED BY DESIGN METHODS ENGINEER	
TWO-LANE, TWO WAY OPERATION	



See sheet 4 for supplemental drawings.

- ① Refer to **SI-881** for sign details.
- ② Refer to **PM-111** for arrow details.
- ③ Space Speed Limit signs at one-mile intervals.
- ④ Install an additional supplemental plaque with the message **NEXT X MILES** on the right side of the roadway to inform motorists of the remaining length of two-lane traffic. Round X to the nearest whole-mile increment.

- ⑥ For roadways with a posted speed limit of 60 mph or greater before road work:
 - Place **SPEED LIMIT AHEAD** sign and **SPEED LIMIT 55** sign prior to the lane closure as shown. Place **SPEED LIMIT 65** or **70** beyond the work area as shown.

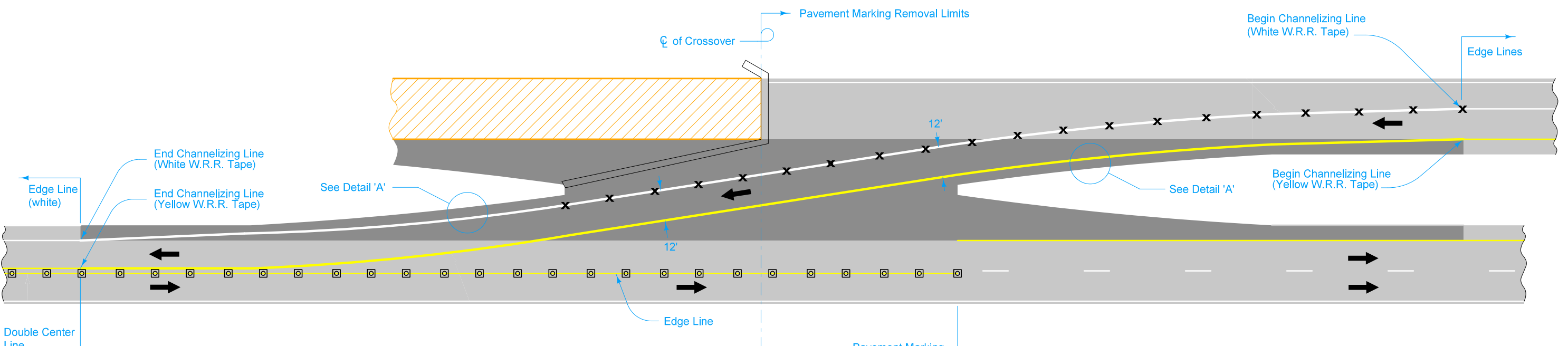
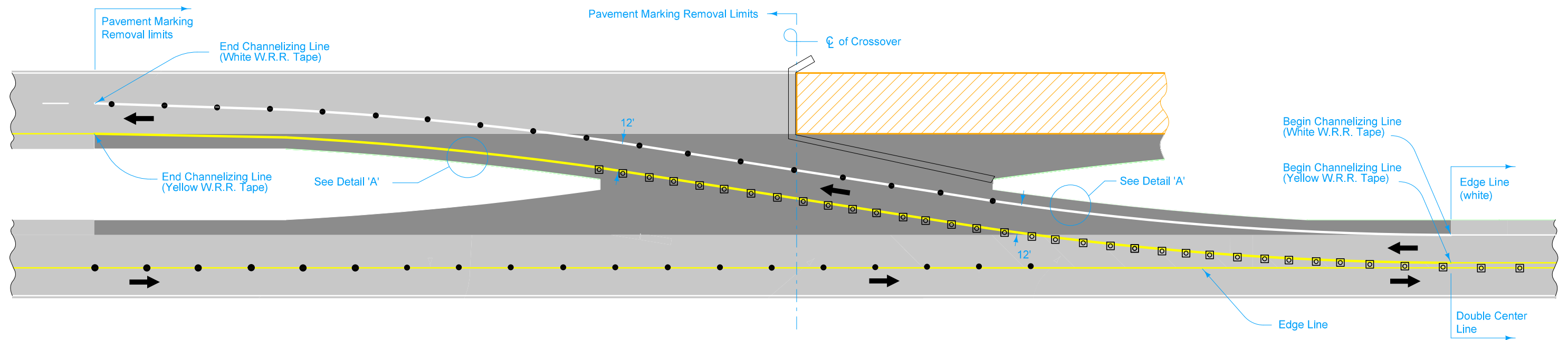
Remove or cover all existing signs that conflict with 55 mph speed limit while 55 mph speed limit is in effect.

Place Speed Feedback Sign at the end of the merge taper.

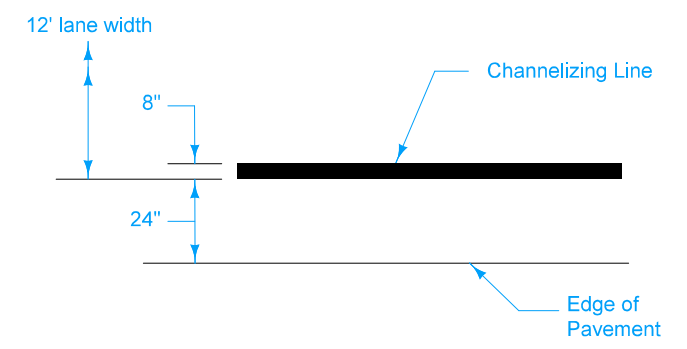
- ⑦ Add below R11-2 already included in Safety Closure.

LEGEND	
	Traffic Sign
	Drum
	42" Channelizer
	Channelizer Marker
	Tubular Marker
	Temporary Lane Separator System
	Speed Feedback Sign
	Arrow Board
	Safety Closure (Refer to TC-252)
	Temporary Floodlighting
	Work Area
	Direction of Traffic
	Detour Pavement

	REVISION
	16 04-19-22
STANDARD ROAD PLAN	TC-61
	SHEET 3 of 5
REVISIONS: Removed TBR and crash cushion.	
 APPROVED BY DESIGN METHODS ENGINEER	
TWO-LANE, TWO WAY OPERATION	



LEGEND	
x	Drum
•	42" Channelizer
	Work Area
	Direction of Traffic
	Detour Pavement
	Safety Closure (Refer to TC-252)
	Temporary Lane Separator System

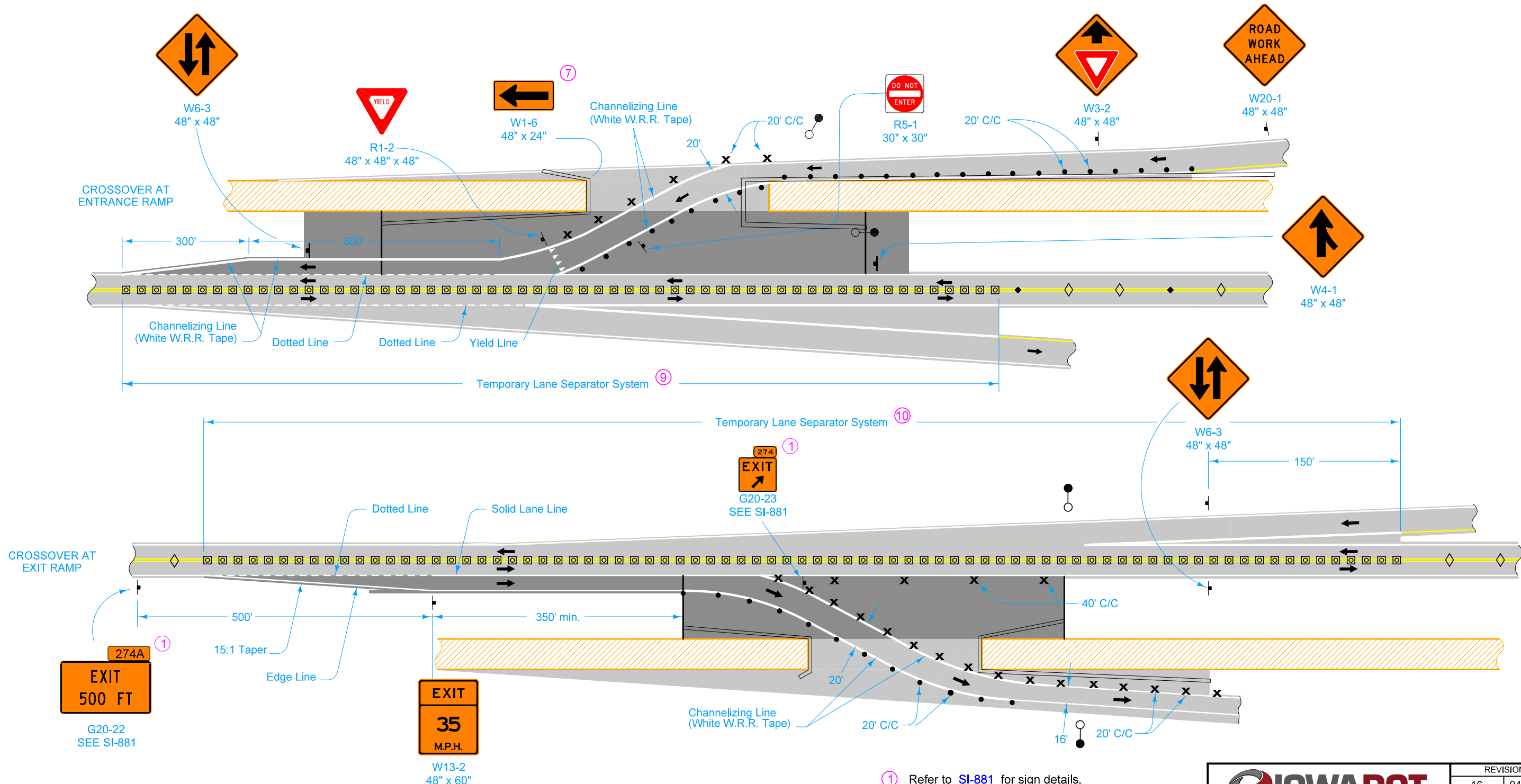


DETAIL 'A'
SUPPLEMENTAL CROSSOVER DRAWINGS 8

8 Details shown hereon are intended to provide additional information to the requirements shown on sheets 2 and 3.

	REVISION
	16 04-19-22
STANDARD ROAD PLAN	
REVISIONS: Removed TBR and crash cushion.	
APPROVED BY DESIGN METHODS ENGINEER	
TWO-LANE, TWO WAY OPERATION	

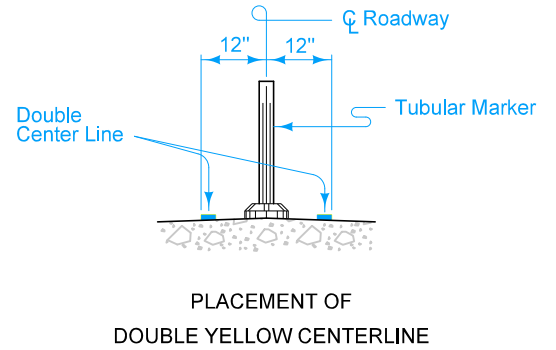
RAMP LOCATIONS



274A
EXIT
500 FT
G20-22
SEE SI-881

EXIT
35
M.P.H.
W13-2
48" x 60"

LEGEND	
	Traffic Sign
	42" Channelizer
	Drum
	Channelizer Marker
	Tubular Marker
	Temporary Floodlighting
	Temporary Lane Separator System
	Work Area
	Detour Pavement
	Direction of Traffic
	Safety Closure (Refer to TC-252)



- ① Refer to SI-881 for sign details.
- ⑦ Add below R11-2 already included in Safety Closure.
- ⑨ Place TLSS from start of ramp gore to end of temporary ramp crossover.
- ⑩ Place TLSS from start of full width decel lane to end of ramp gore.

<p>STANDARD ROAD PLAN</p>	REVISION
	16 04-19-22
	TC-61
SHEET 5 of 5	
REVISIONS: Removed TBR and crash cushion.	
<p>APPROVED BY DESIGN METHODS ENGINEER</p>	
<p>TWO-LANE, TWO WAY OPERATION</p>	