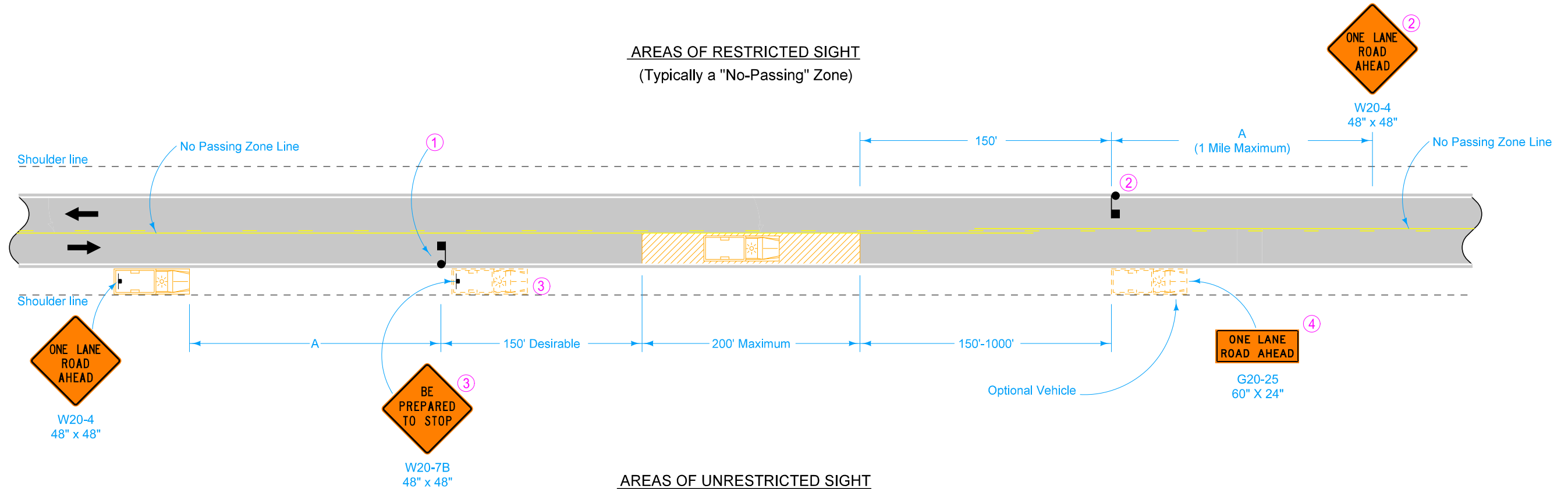
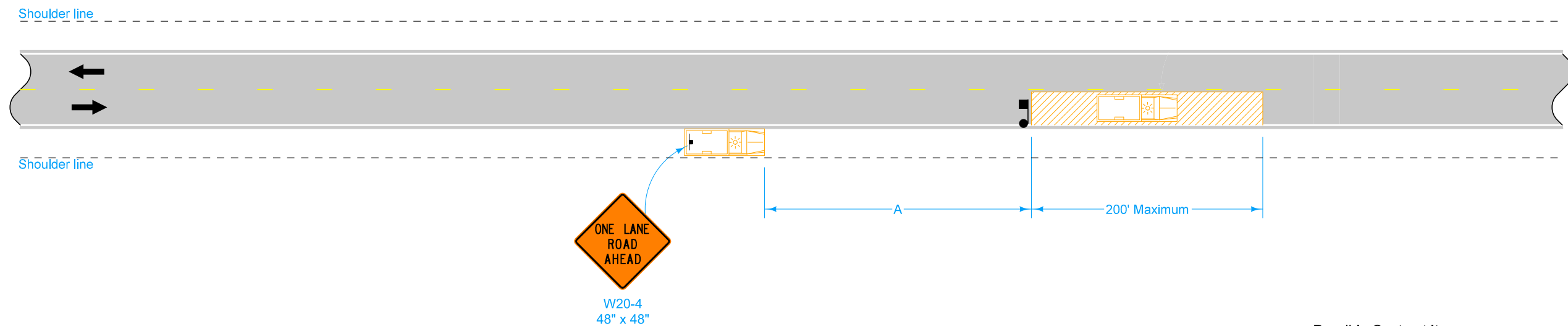


AREAS OF RESTRICTED SIGHT
(Typically a "No-Passing" Zone)



AREAS OF UNRESTRICTED SIGHT



This layout is intended for use with slow-moving operations or with operations involving stops not to exceed 15 minutes. For stops exceeding 15 minutes or in heavy traffic situations, use [TC-213](#).

Equip all vehicles with an amber revolving light or an amber strobe light.

- ① When a stop is made in an area of restricted sight distance, use a flagger to hold traffic in the closed lane and allow traffic to pass when conditions are safe.
- ② When a stop is made or work proceeds in an area where sight distance is restricted from either direction and is anticipated to be more than 5 minutes, a second flagger and ONE LANE ROAD AHEAD sign is required.
- ③ This vehicle and sign may be used in lieu of a flagger for Falling Weight Deflectometer tests.
- ④ Refer to [SI-881](#) for sign details.

Possible Contract Items:
Flaggers
Traffic Control

LEGEND

- Direction of Traffic
- Flagger
- Traffic Sign
- Work Area
- Work Vehicle

Speed Limit (mph)	A min.
25 or less	200'
30-35	300'
40-45	500'
50 or greater	1000'

 STANDARD ROAD PLAN	REVISION	
	3	10-15-19
TC-231		
SHEET 1 of 1		
REVISIONS: New logo.		
<i>Steve Miller</i> APPROVED BY DESIGN METHODS ENGINEER		
SLOW MOVING VEHICLE OPERATING IN THE TRAFFIC LANE		