

VEHICLES NOT STRADDLING CENTERLINE

This layout may be used when painting edgeline or centerline markings.

Equip all vehicles with an amber revolving light or amber strobe light.

- ① Use this sign when painting centerline markings.
- ② Optional Fluorescent Yellow Green (FYG) sign background may be used.
- ③ This arrow board may be operated in a four-corner caution mode.
- ④ Move this vehicle to the shoulder to accommodate passing traffic.
- ⑤ A vehicle mounted Portable Dynamic Message Sign (PDMS) may be used in lieu of this sign.
- ⑥ Refer to [SI-881](#) for sign details.
- ⑦ TMA required for speed limits of 55 mph or greater and ADT greater than 3,000.

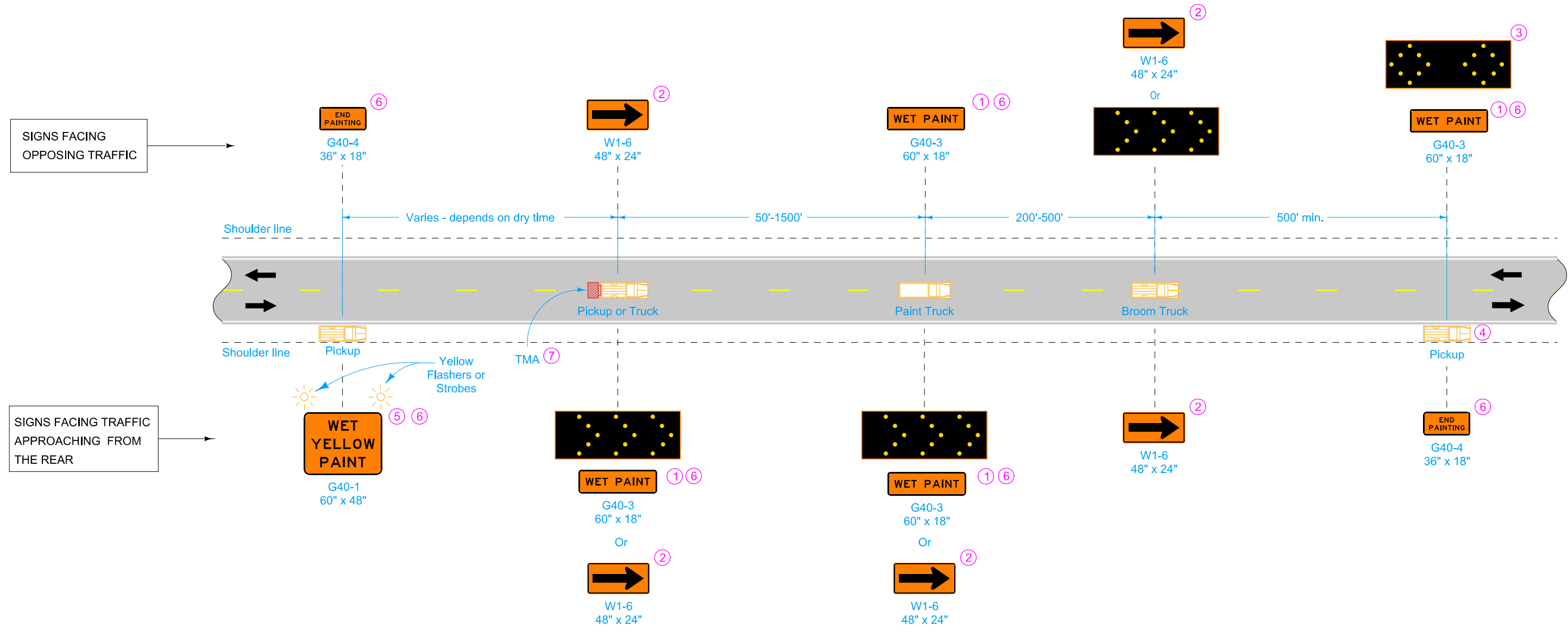
Possible Contract Item:
Traffic Control

LEGEND

← Direction of Traffic

▨ Truck-Mounted Attenuator (TMA)

IOWA DOT	REVISION	
	7	10-17-17
STANDARD ROAD PLAN		TC-233
REVISIONS: Added Circle Note 7.		SHEET 1 of 2
 <small>APPROVED BY DESIGN METHODS ENGINEER</small>		
PAVEMENT MARKING OPERATIONS TWO-LANE		



VEHICLES STRADDLING CENTERLINE

- ① Use this sign when painting centerline markings.
- ② Optional Fluorescent Yellow Green (FYG) sign background may be used.
- ③ This arrow board may be operated in a four-corner caution mode.
- ④ Move this vehicle to the shoulder to accommodate passing traffic.
- ⑤ A vehicle mounted Portable Dynamic Message Sign (PDMS) may be used in lieu of this sign.
- ⑥ Refer to [SI-881](#) for sign details.
- ⑦ TMA required for speed limits of 55 mph or greater and ADT greater than 3,000.

LEGEND

← Direction of Traffic

▨ Truck-Mounted Attenuator (TMA)

	REVISION	
	7	10-17-17
STANDARD ROAD PLAN		TC-233
REVISIONS: Added Circle Note 7.		SHEET 2 of 2
 APPROVED BY DESIGN METHODS ENGINEER		
PAVEMENT MARKING OPERATIONS TWO-LANE		