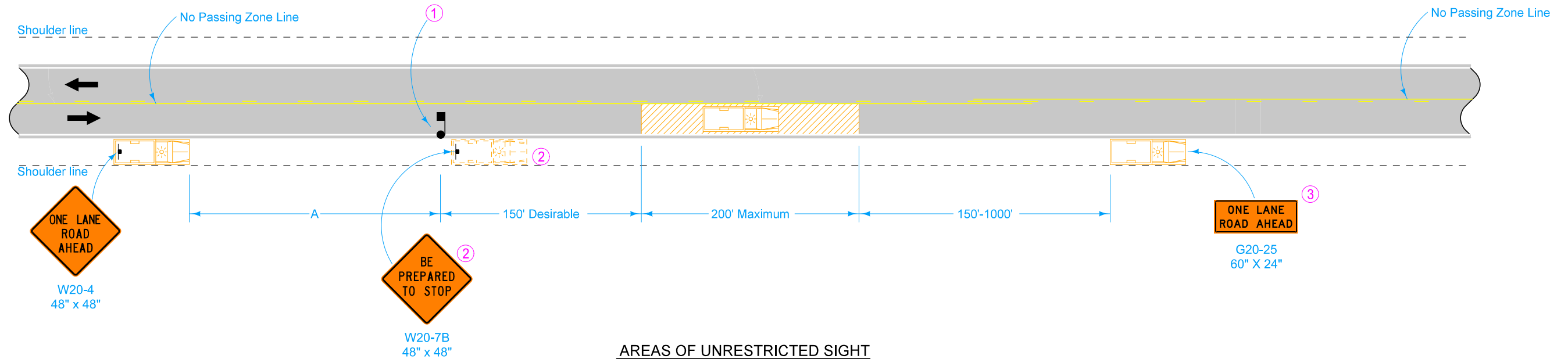
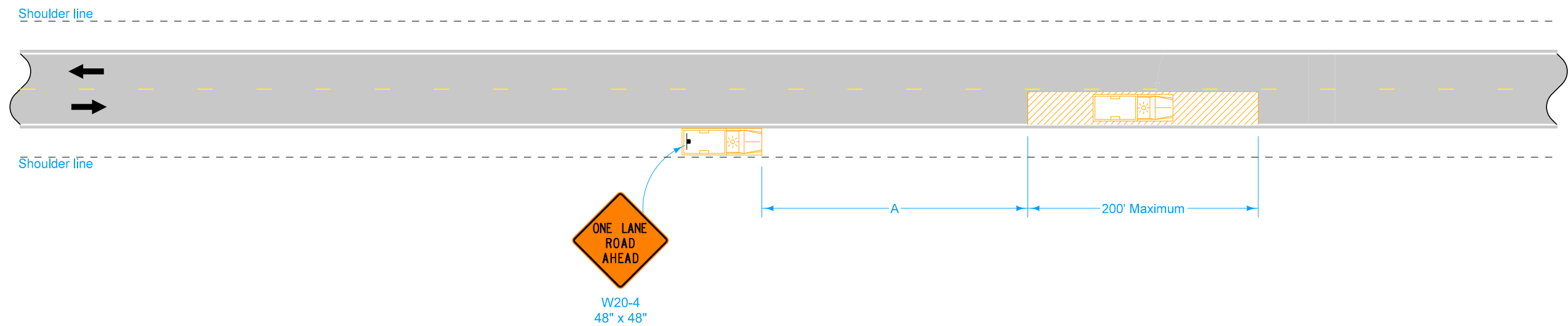


AREAS OF RESTRICTED SIGHT  
(Typically a "No-Passing" Zone)



AREAS OF UNRESTRICTED SIGHT



**LEGEND**

- Direction of Traffic
- Flagger
- Traffic Sign
- Work Area
- Work Vehicle

Speed Limit (mph)	A min.
25 or less	200'
30-35	300'
40-45	500'
50 or greater	1000'

For stops exceeding 15 minutes or in heavy traffic situations, use [TC-213](#).

Equip all vehicles with an amber revolving light or an amber strobe light.

- ① When a stop is made in an area of restricted sight distance, use a flagger to hold traffic in the closed lane and allow to pass when conditions are safe.
- ② This vehicle and sign may be used in lieu of a flagger.
- ③ Refer to [SI-881](#) for sign details.

	REVISION	
	1	10-15-19
<b>STANDARD ROAD PLAN</b>		
REVISIONS: New logo.		
APPROVED BY DESIGN METHODS ENGINEER		
<b>EDGE RUT REPAIR</b>		