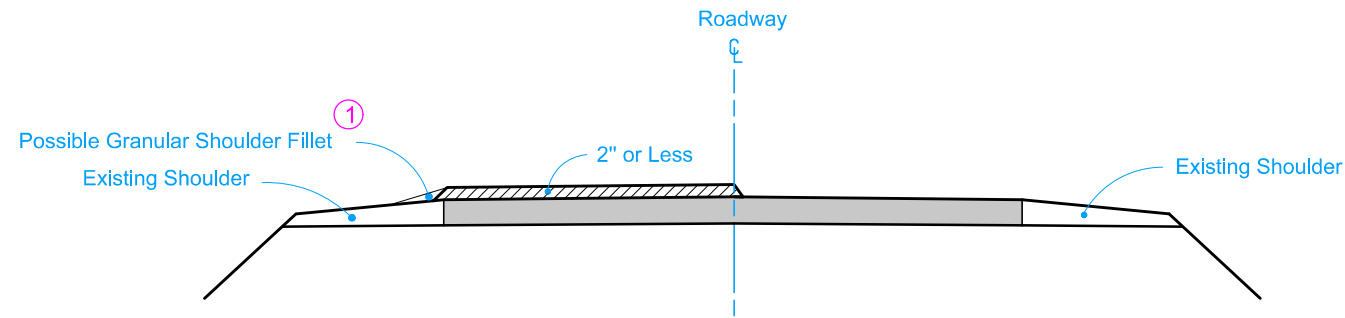
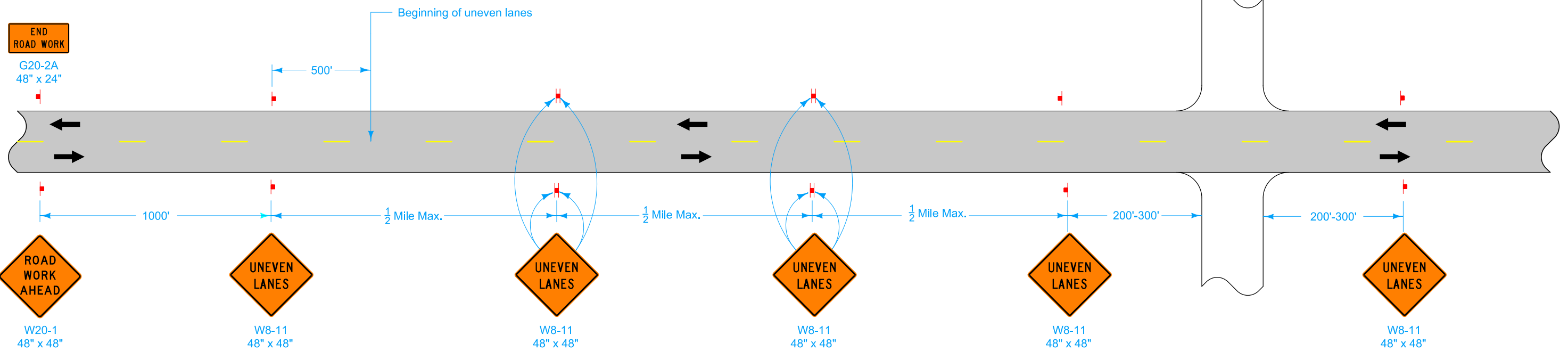
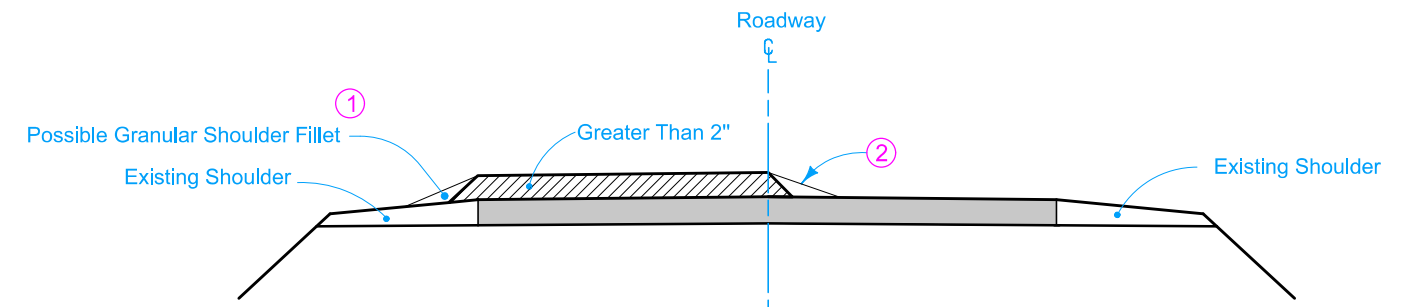


DESIGN LIFT THICKNESSES 2" OR LESS



DESIGN LIFT THICKNESSES GREATER THAN 2" (WITH $\frac{1}{2}$ FILLET)



LEGEND

← Direction of Traffic

▬ Traffic Sign

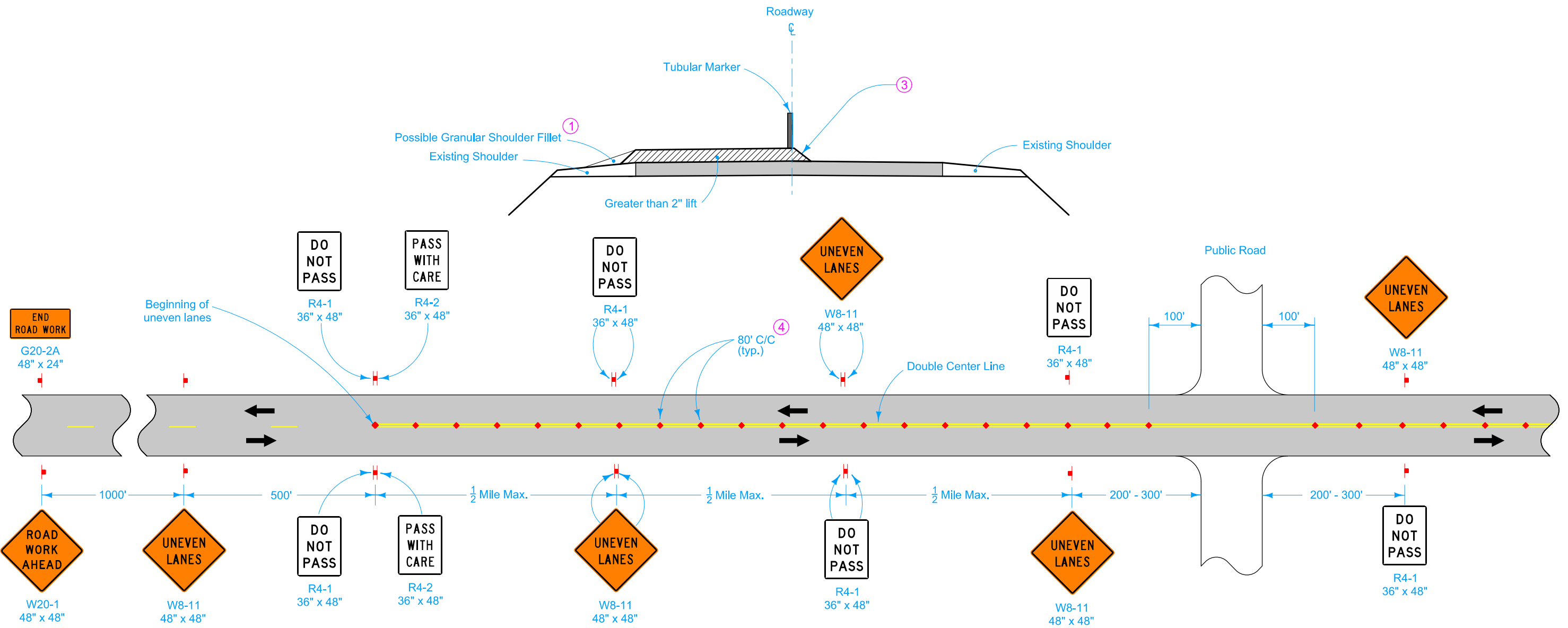
- ① Shoulder Fillet: Refer to Section 1107 of the Standard Specifications and Safety Edge specifications.
- ② Centerline fillet may be notched wedge, Safety Edge, or a temporary 3:1 HMA fillet.

Possible Contract Items:
Pavement Marking Items
Traffic Control

Possible Tabulation:
108-22

	REVISION	
	4	10-15-19
STANDARD ROAD PLAN		
REVISIONS: New logo.		
 APPROVED BY DESIGN METHODS ENGINEER		
UNEVEN LANES		

DESIGN LIFT THICKNESSES GREATER THAN 2" (WITHOUT ϕ FILLET)

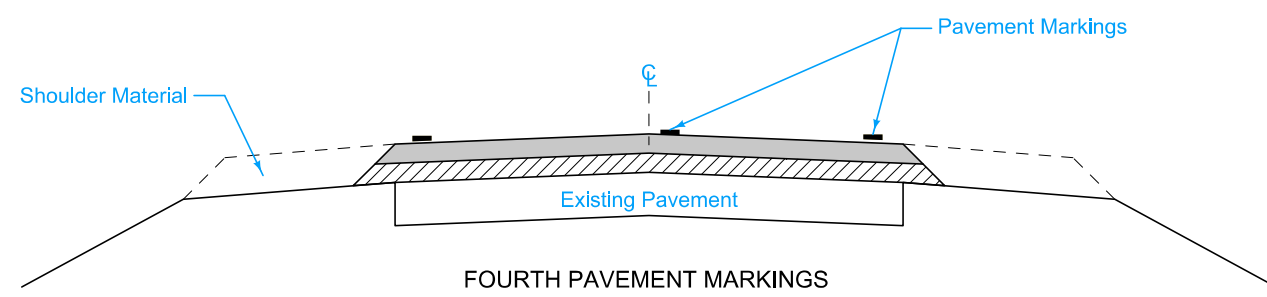
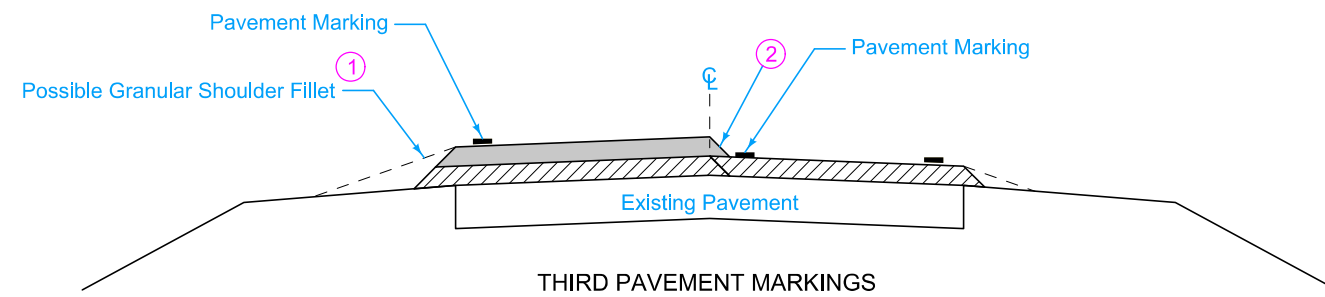
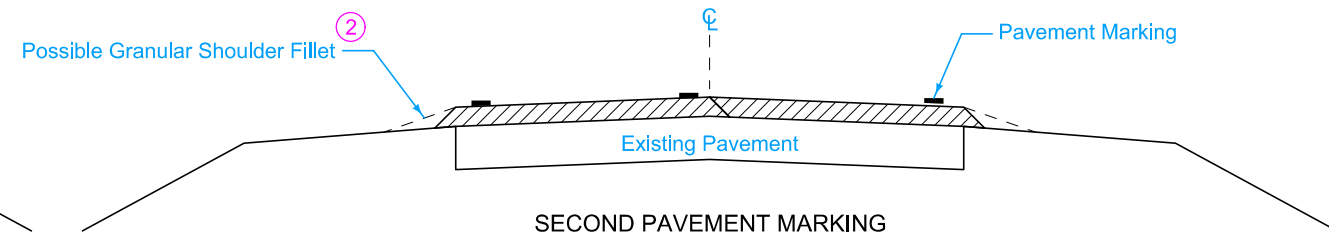
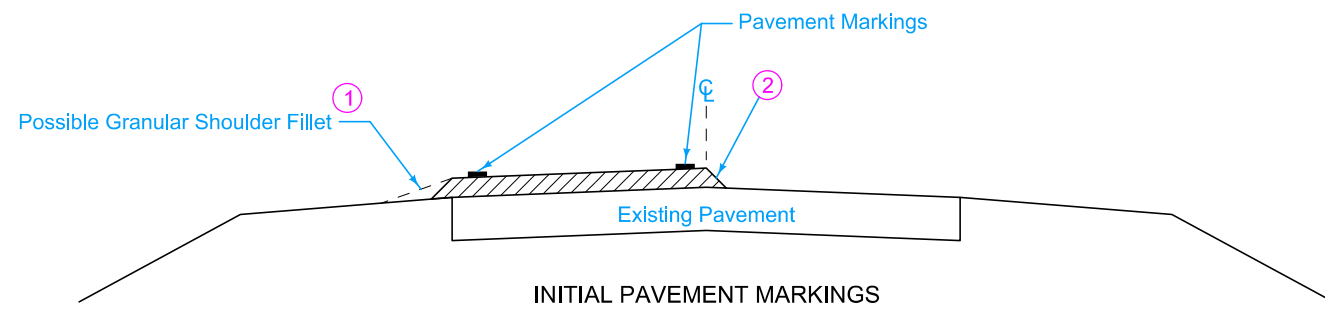


LEGEND	
	Direction of Traffic
	Traffic Sign
	Tubular Marker

"No-Passing" zones shall not exceed 2.5 miles for ADT less than 2500 vpd or 2.0 miles for ADT from 2500 to 5000 vpd.



- ① Shoulder Fillet: Refer to Section 1107 of the Standard Specifications and Safety Edge specifications.
- ③ Typical 1:1 taper.
- ④ Spacing = 40 feet where horizontal curve radius is less than 1000 feet.



	REVISION
	4 10-15-19
	TC-282
SHEET 2 of 3	
REVISIONS: New logo.	
 APPROVED BY DESIGN METHODS ENGINEER	
UNEVEN LANES	



PAVEMENT MARKING SEQUENCE

- ① Shoulder Fillet: Refer to Standard Specification 1107 and Safety Edge specifications.
- ② Centerline fillet may be notched wedge, Safety Edge, or a temporary 3:1 HMA fillet.

LEGEND	
	Surface Course
	Intermediate Course

	REVISION	
	4	10-15-19
STANDARD ROAD PLAN		TC-282
REVISIONS: New logo.		SHEET 3 of 3
 APPROVED BY DESIGN METHODS ENGINEER		
UNEVEN LANES		