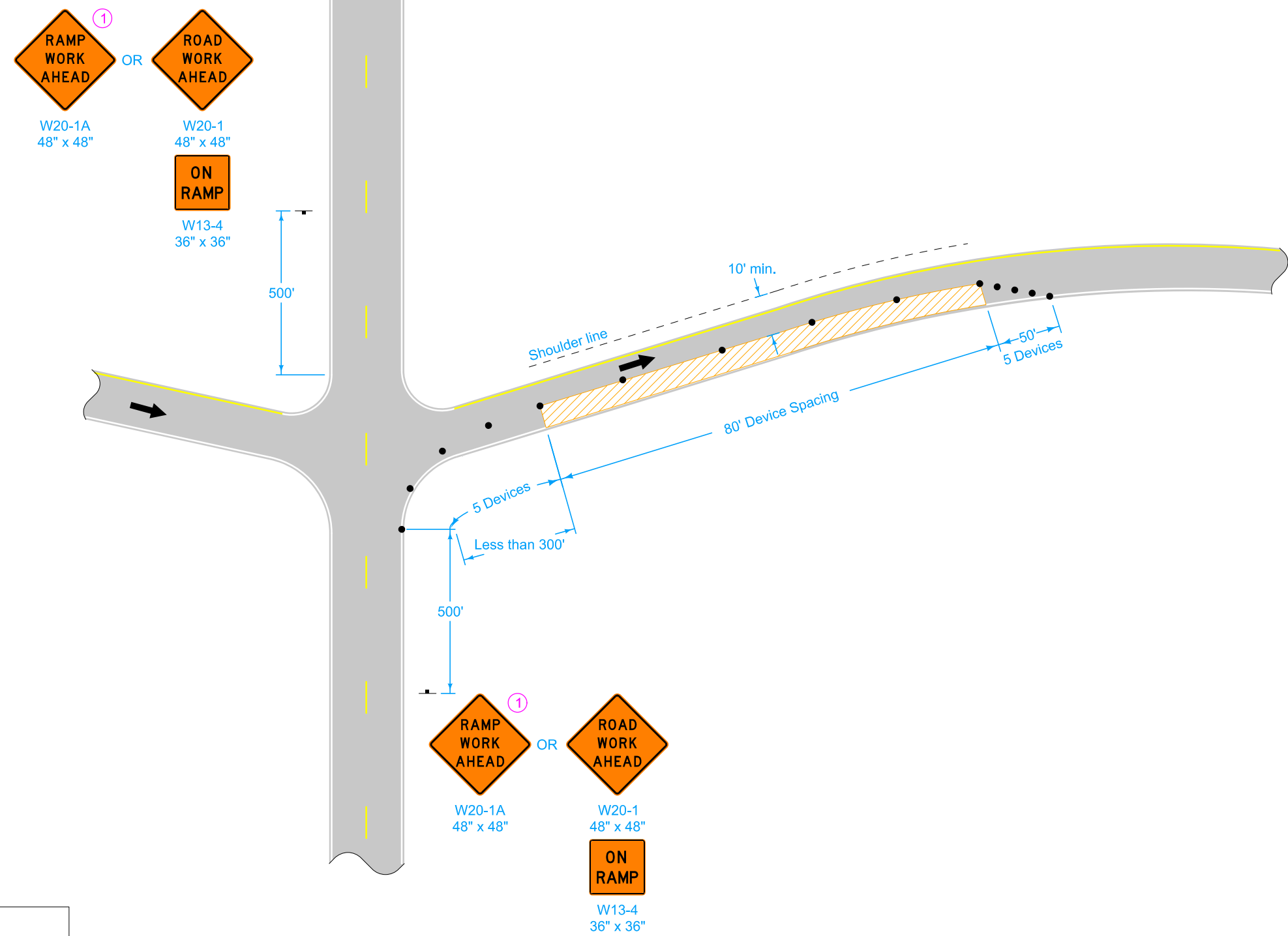


① Refer to SI-881 for sign details.

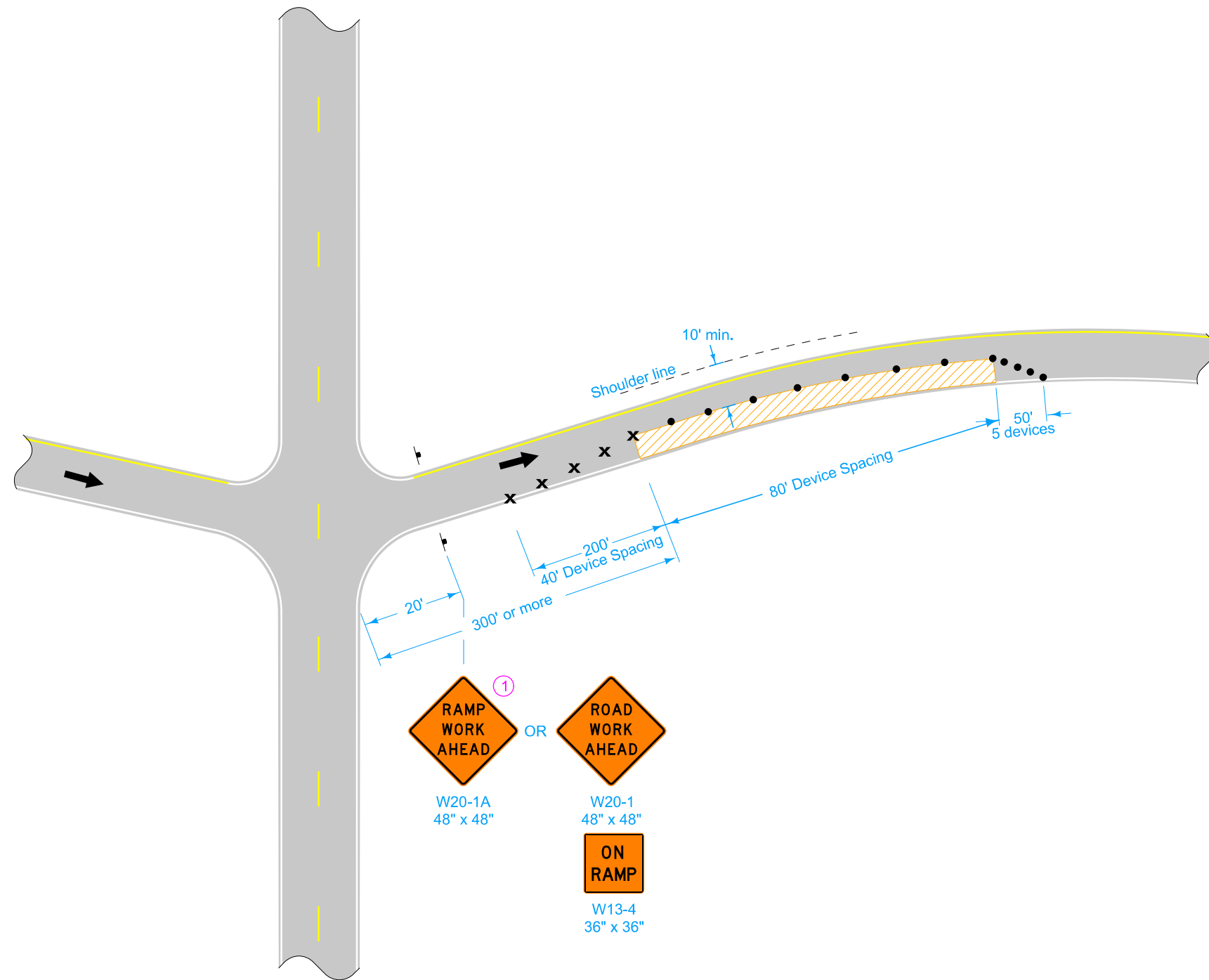


LEGEND	
	Traffic Sign
	42" Channelizer
	Direction of Traffic
	Work Area

Possible Contract Item:
Traffic Control

	REVISION	
	3	10-15-19
STANDARD ROAD PLAN		TC-416
REVISIONS: New logo.		SHEET 1 of 4
 APPROVED BY DESIGN METHODS ENGINEER		
PARTIAL LANE CLOSURE ON RAMPS		

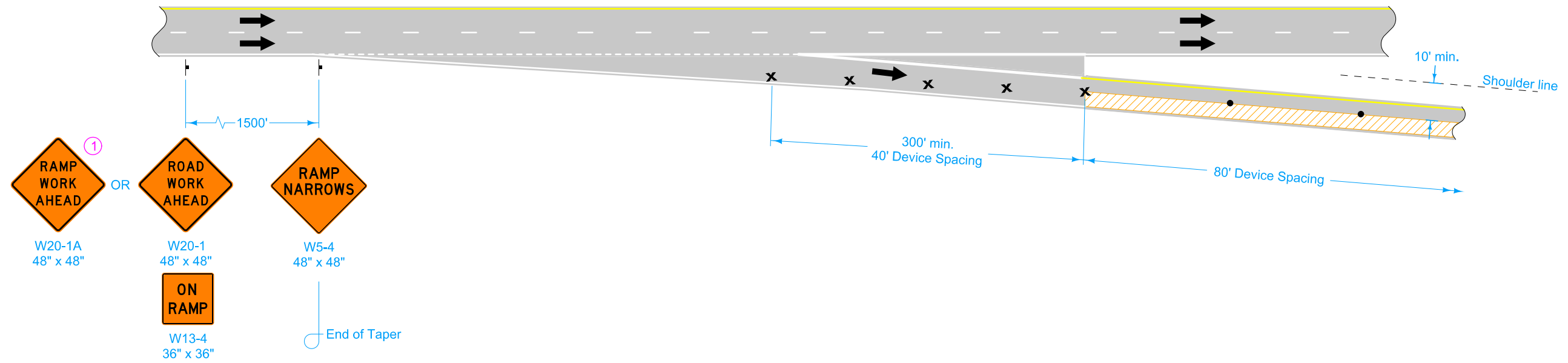
① Refer to SI-881 for sign details.



LEGEND	
x	Drum
↑	Traffic Sign
•	42" Channelizer
←	Direction of Traffic
▨	Work Area

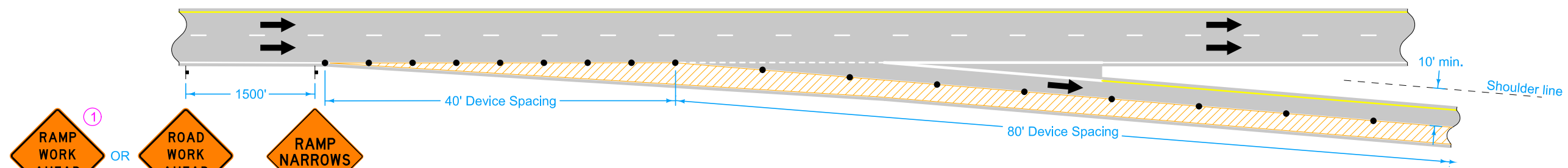
	REVISION	
	3	10-15-19
STANDARD ROAD PLAN		TC-416
REVISIONS: New logo.		SHEET 2 of 4
 APPROVED BY DESIGN METHODS ENGINEER		
PARTIAL LANE CLOSURE ON RAMPS		

① Refer to SI-881 for sign details.



LEGEND	
x	Drum
↑	Traffic Sign
•	42" Channelizer
←	Direction of Traffic
▨	Work Area

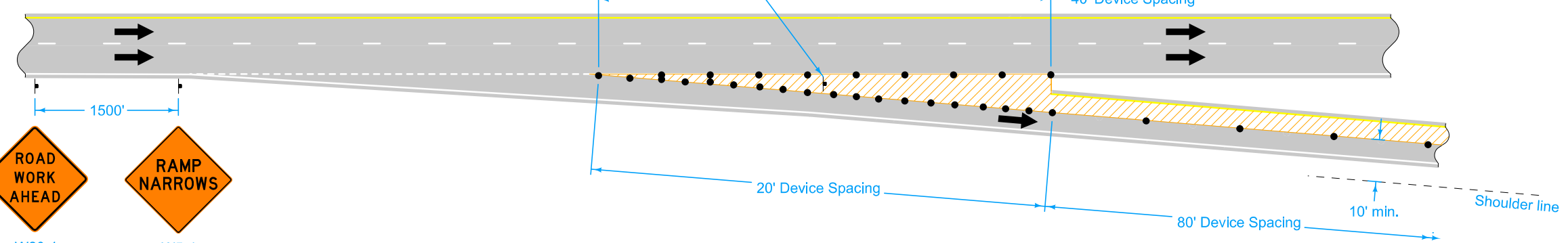
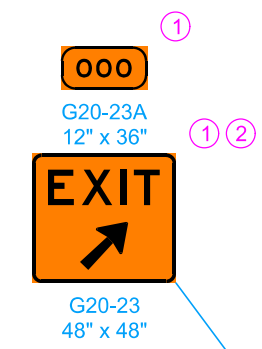
	REVISION	
	3	10-15-19
STANDARD ROAD PLAN		TC-416
REVISIONS: New logo.		SHEET 3 of 4
 APPROVED BY DESIGN METHODS ENGINEER		
PARTIAL LANE CLOSURE ON RAMPS		



- ① **RAMP WORK AHEAD**
W20-1A
48" x 48"
- OR
- ROAD WORK AHEAD**
W20-1
48" x 48"
- ON RAMP**
W13-4
36" x 36"
- RAMP NARROWS**
W5-4
48" x 48"

End of Taper

- ① Refer to SI-881 for sign details.
- ② Temporary EXIT sign, mounted so that bottom of sign is a minimum of 3 feet above pavement surface. If in place for more than one day, mount an Exit Number Panel with the proper exit number above the temporary EXIT sign.



- ① **RAMP WORK AHEAD**
W20-1A
48" x 48"
- OR
- ROAD WORK AHEAD**
W20-1
48" x 48"
- ON RAMP**
W13-4
36" x 36"
- RAMP NARROWS**
W5-4
48" x 48"

End of Taper

LEGEND

- Traffic Sign
- 42" Channelizer
- Direction of Traffic
- Work Area

	REVISION	
	3	10-15-19
STANDARD ROAD PLAN		TC-416
REVISIONS: New logo.		SHEET 4 of 4
 APPROVED BY DESIGN METHODS ENGINEER		
PARTIAL LANE CLOSURE ON RAMPS		