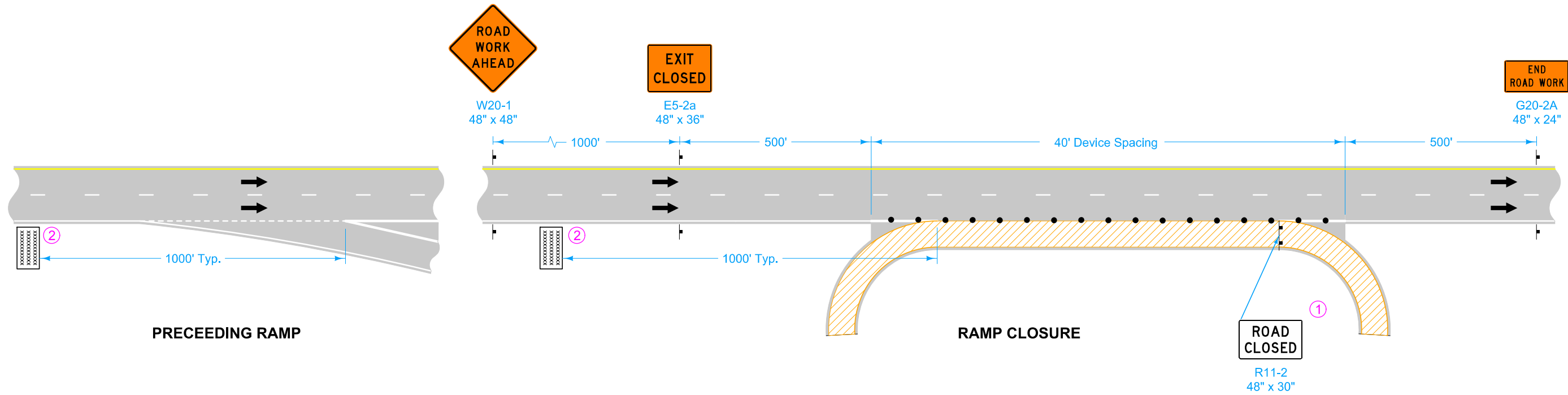


- ① A vehicle with an amber revolving light or amber strobe light may be substituted for the Type III barricade.
- ② Place Portable Dynamic Message Sign 3 calendar days prior to ramp closure. Leave in place until ramp is re-opened. The Engineer will determine the message to display.



Possible Contract Items:
 Safety Closure
 Traffic Control
 Portable Dynamic Message Sign

Possible Tabulation:
 108-13A

LEGEND	
	Type III Barricade
	Traffic Sign
	42" Channelizer
	Direction of Traffic
	Work Area
	Portable Dynamic Message Sign

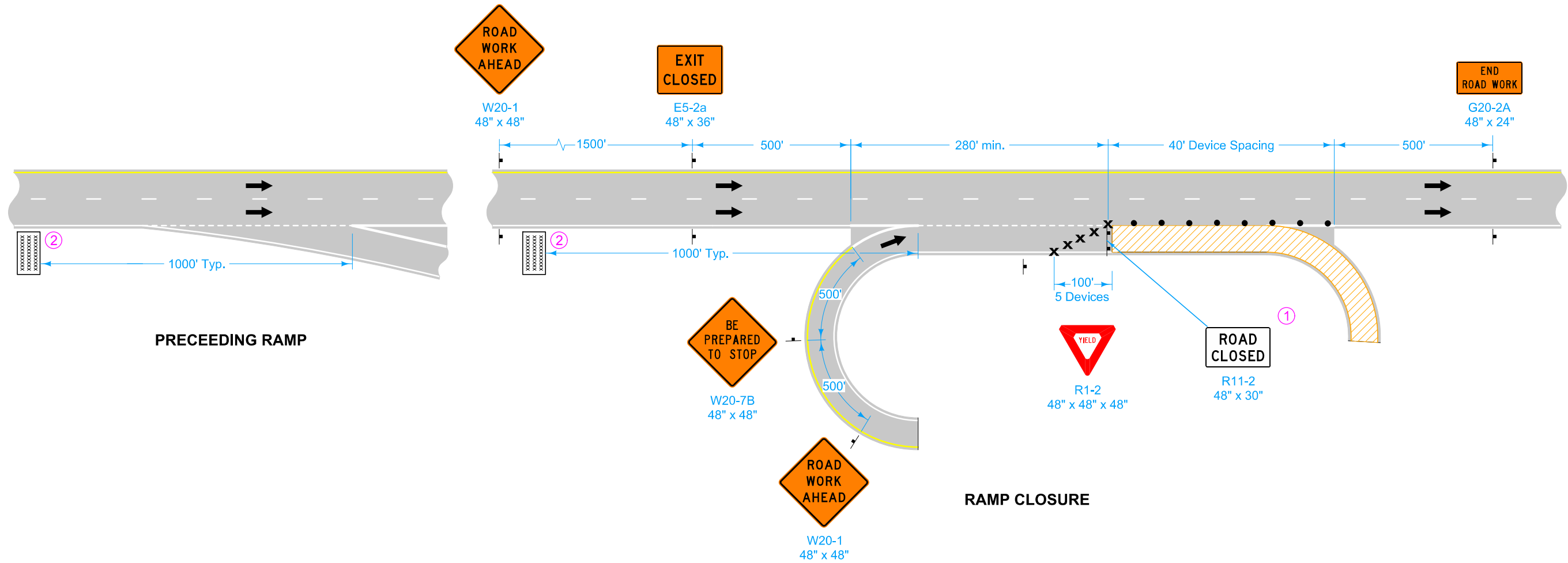
	REVISION	
	5	04-21-20
STANDARD ROAD PLAN		TC-417
		SHEET 1 of 3

REVISIONS: Added Portable Dynamic Message Signs and new note 2. Retitled standard.

Shawn Miller
 APPROVED BY DESIGN METHODS ENGINEER

EXIT RAMP CLOSURE

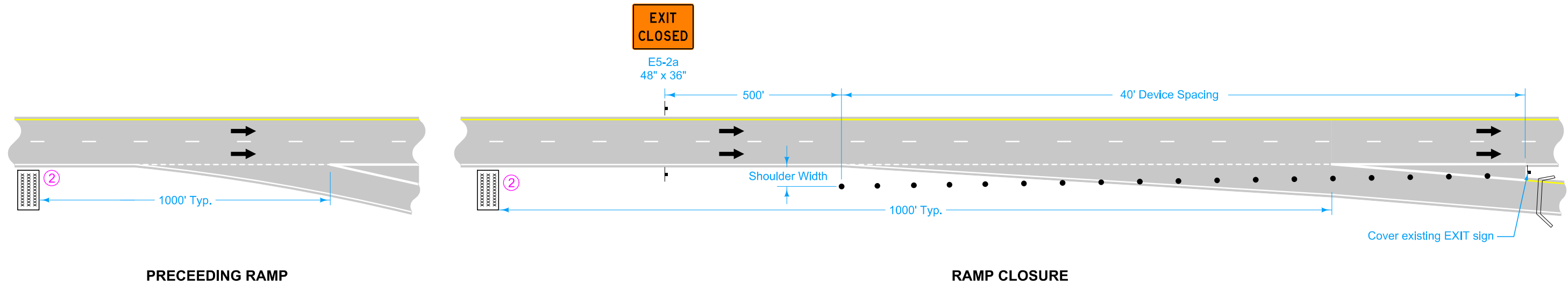
- ① A vehicle with an amber revolving light or amber strobe light may be substituted for the Type III barricade.
- ② Place Portable Dynamic Message Sign 3 calendar days prior to ramp closure. Leave in place until ramp is re-opened. The Engineer will determine the message to display.



LEGEND	
	Type III Barricade
	Traffic Sign
	Drum
	42" Channelizer
	Direction of Traffic
	Work Area
	Portable Dynamic Message Sign

	REVISION	
	5	04-21-20
STANDARD ROAD PLAN		TC-417
		SHEET 2 of 3
REVISIONS: Added Portable Dynamic Message Signs and new note 2. Retitled standard.		
 APPROVED BY DESIGN METHODS ENGINEER		
EXIT RAMP CLOSURE		

② Place Portable Dynamic Message Sign 3 calendar days prior to ramp closure. Leave in place until ramp is re-opened. The Engineer will determine the message to display.



PRECEEDING RAMP

RAMP CLOSURE

LEGEND

	Road Closure
	Traffic Sign
	42" Channelizer
	Direction of Traffic
	Portable Dynamic Message Sign

	REVISION	
	5	04-21-20
STANDARD ROAD PLAN		TC-417
		SHEET 3 of 3
REVISIONS: Added Portable Dynamic Message Signs and new note 2. Retitled standard.		
APPROVED BY DESIGN METHODS ENGINEER		
EXIT RAMP CLOSURE		