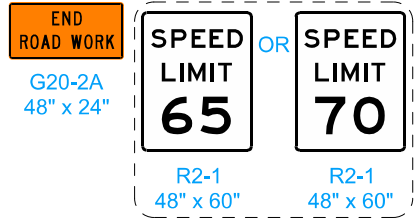


DETAIL 'A'



SPEED LIMIT (mph)	D	E	M	T
45 - 50	45'	300'	630'	100'
55 - 60	55'	400'	770'	100'
65 - 70	65'	500'	910'	100'

**LEGEND**

- Traffic Sign
- Drum
- 42" Channelizer
- Speed Feedback Sign
- Arrow Board
- Temporary Crash Cushion
- Work Area
- Direction of Traffic

Place Concrete Barrier Markers at 10 ft C/C on bridge rail.

① For roadways with a posted speed limit of 60 mph or greater before road work:  
Place SPEED LIMIT AHEAD sign and SPEED LIMIT 55 sign prior to the lane closure as shown. Place SPEED LIMIT 65 or 70 beyond the work area as shown.

For traffic control zones lasting more than 4 hours, place a Speed Feedback Sign at the end of the merge taper.

② Refer to SI-881 for sign details.

③ For lanes closed to traffic, place two drums every 1000 feet. For full depth excavations in a closed lane, place two drums in front of each location. Additional drums need not be placed for full depth excavations spaced closer than 150 feet.

Possible Contract Items:  
 Painted Symbols and Legends  
 Pavement Marking Items  
 Pavement Markings Removed  
 Symbols and Legends Removed  
 Temporary Barrier Rail  
 Temporary Crash Cushions

Possible Tabulations:  
 108-22  
 108-29  
 108-30  
 108-33

**IOWA DOT**

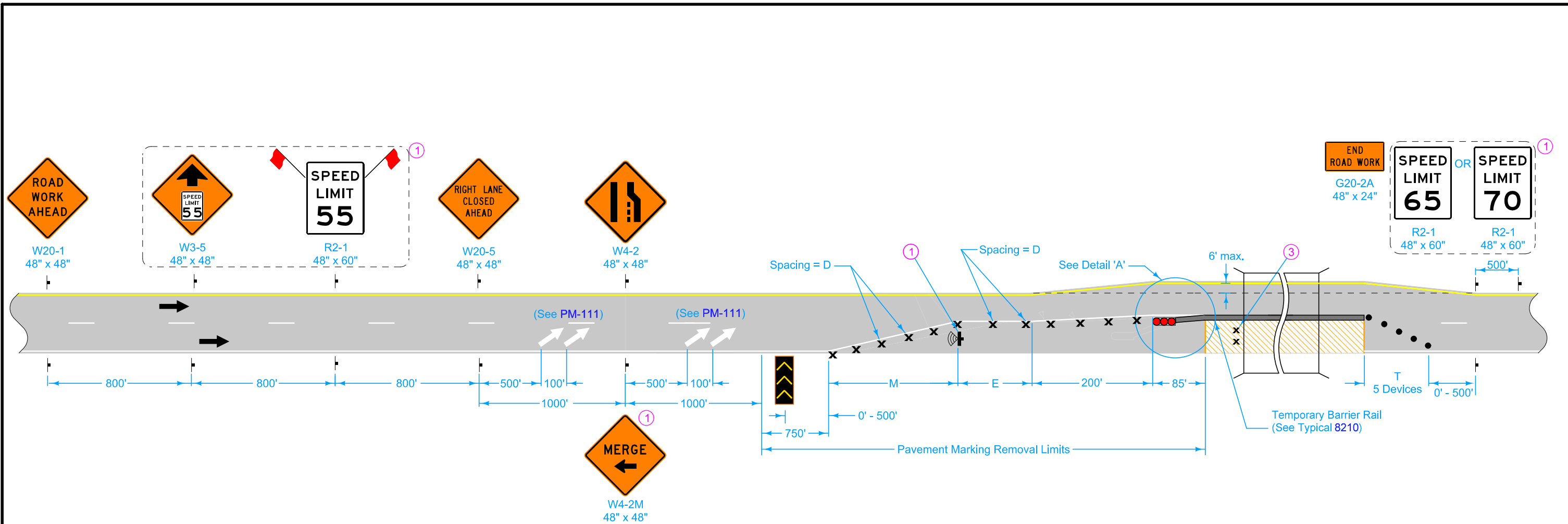
**STANDARD ROAD PLAN**

REVISIONS: Removed note about traffic over 20,000 ADT.

APPROVED BY DESIGN METHODS ENGINEER

**LANE CLOSURE WITH TBR**

REVISION	
18	04-19-22
<b>TC-421</b>	
SHEET 1 of 2	



LEGEND	
	Traffic Sign
	Drum
	42" Channelizer
	Speed Feedback Sign
	Arrow Board
	Temporary Crash Cushion
	Work Area
	Direction of Traffic

- ① For roadways with a posted speed limit of 60 mph or greater before road work:  
Place SPEED LIMIT AHEAD sign and SPEED LIMIT 55 sign prior to the lane closure as shown. Place SPEED LIMIT 65 or 70 beyond the work area as shown.  
  
For traffic control zones lasting more than 4 hours, place a Speed Feedback Sign at the end of the merge taper.
- ② Refer to SI-881 for sign details.
- ③ For lanes closed to traffic, place two drums every 1000 feet. For full depth excavations in a closed lane, place two drums in front of each location. Additional drums need not be placed for full depth excavations spaced closer than 150 feet.

	REVISION	
	18	04-19-22
TC-421		
SHEET 2 of 2		
REVISIONS: Removed note about traffic over 20,000 ADT.		
 APPROVED BY DESIGN METHODS ENGINEER		
LANE CLOSURE WITH TBR		