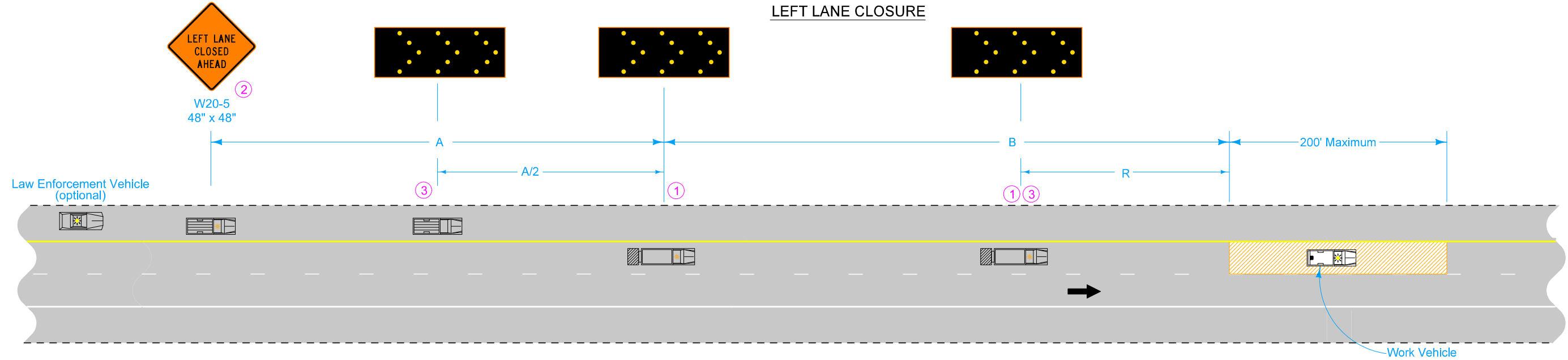
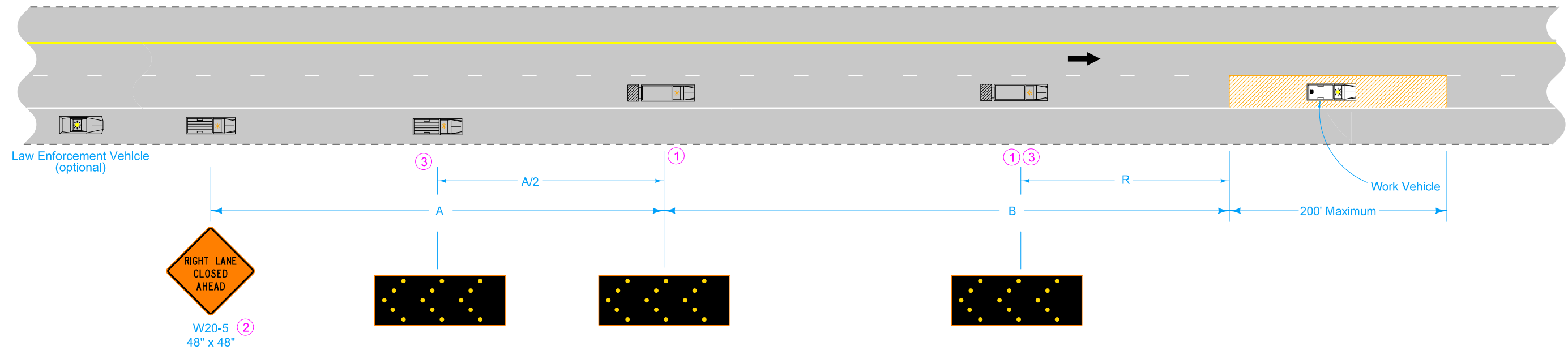


LEFT LANE CLOSURE



RIGHT LANE CLOSURE



Possible Contract Item:
Traffic Control

LEGEND

- Arrow Board
- Truck-Mounted Attenuator (TMA)
- Direction of Traffic
- Work Area

SPEED LIMIT (mph)	Vehicle Spacing		Roll Ahead Distance (R)			
			9900 to 22,000 lbs. GVW		Over 22,000 lbs. GVW	
	A	B	Stationary	Moving 15 mph Max	Stationary	Moving 15 mph Max
25-40	250'	250'	100'	100'	75'	100'
45	500'	250'	125'	175'	100'	150'
50 or greater	1000'	500'	200'	240'	160'	200'

Equip all vehicles with an amber revolving light or amber strobe light.

This layout is intended for use with slow-moving operations involving stops not to exceed 30 minutes. For stops exceeding 30 minutes, use TC-418 or TC-419.

- ① TMA required for speed limits of 45 mph or greater.
- ② Optional Fluorescent yellow green (FYG) sign background may be used.
- ③ Optional vehicle

IOWA DOT

STANDARD ROAD PLAN

REVISIONS: Added additional vehicles, and revised layout distances

APPROVED BY DESIGN METHODS ENGINEER

SLOW MOVING VEHICLE OPERATING IN THE TRAFFIC LANE

REVISION	
8	10-18-22

TC-431

SHEET 1 of 1