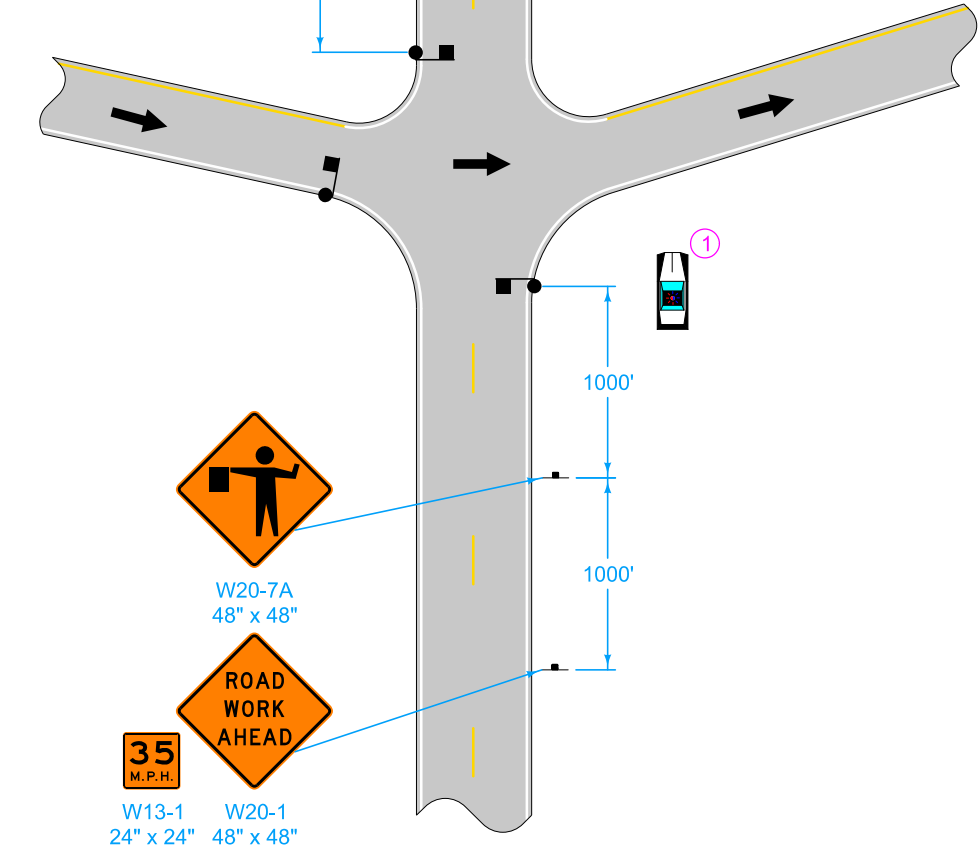


SPEED LIMIT (mph)	M	D
55 - 60	770'	55'
65 - 70	910'	65'

**LEGEND**

- x Drum
- ▬ Traffic Sign
- 42" Channelizer
- Law Enforcement Vehicle
- Arrow Board
- Flagger
- Work Area
- Direction of Traffic

- Give priority to mainline traffic on the ramp.
- Stop side road traffic before mainline traffic is rerouted onto ramp.
- ① For ADT less than 2000, a Contractor vehicle may be substituted for the Enforcement vehicle.
- ② Refer to SI-881 for sign details.



Possible Contract Items:  
 Flaggers  
 Traffic Control

	REVISION	
	7	10-17-17
<b>STANDARD ROAD PLAN</b>		<b>TC-454</b>
REVISIONS: Added Designer Info button and updated DOT logo.		SHEET 1 of 1
APPROVED BY DESIGN METHODS ENGINEER		
<b>TEMPORARY DETOUR USING RAMP ON DIVIDED HIGHWAY</b>		