



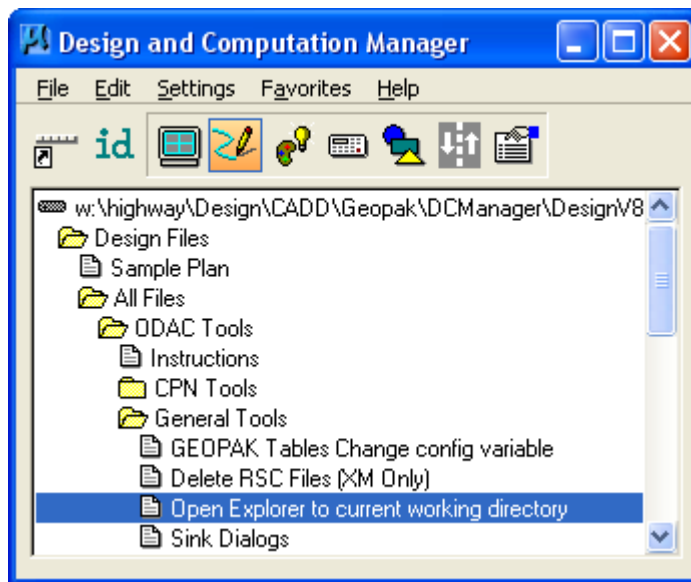
# Open Explorer to Working Directory

Design Manual  
Chapter 21  
Automation Tools  
Instructions

Originally Issued: 08-29-08  
Revised: 04-30-09

This command is accessed through Geopak: D&C Manager, as shown below.

(If the item is not found as shown, use the *D&C > Edit > Find* tool to locate it.)



Double-click the **Open Explorer to current working directory** item and the Microsoft Windows Explorer window will open to the directory where the current active MicroStation file is located, (which is the current working directory). This will save much time, as compared to accessing the current working directory using the manual process of:

*“Right-click Start > Explore All Users > W > Projects > ProjectDirectory > ...”*,

and possibly going even deeper into the directory structure.