



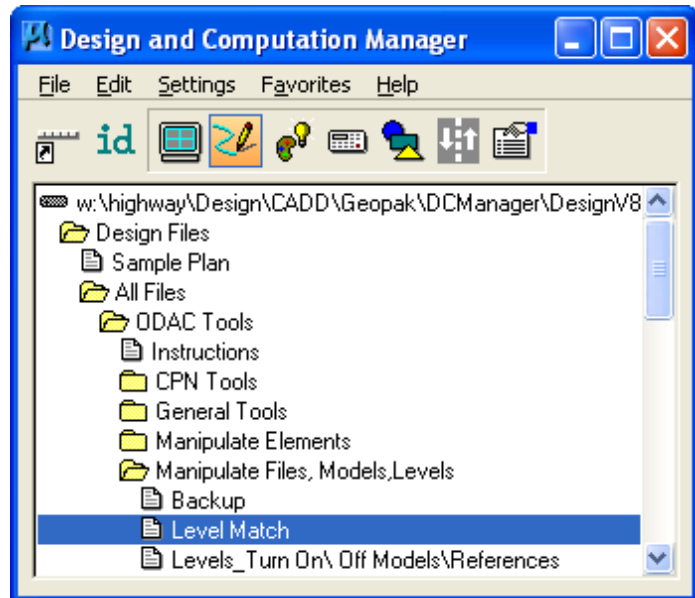
# Level Match tool

Design Manual  
Chapter 21  
Automation Tools  
Instructions

Originally Issued: 11-26-08  
Revised: 04-30-09

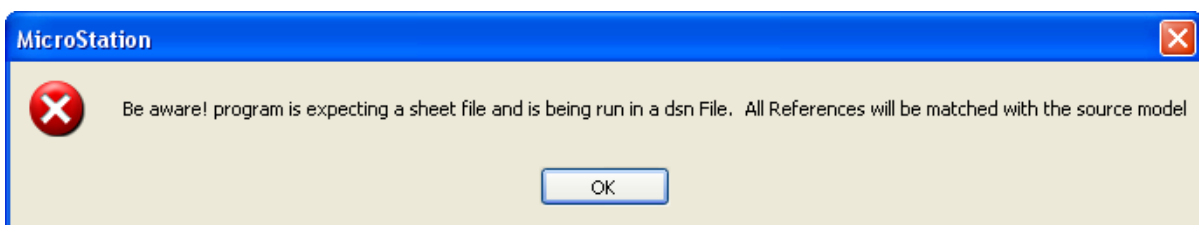
This tool can be accessed from the Geopak:  
D&C Manager, as shown to the right.

(If the item is not found as shown, use the  
*D&C > Edit > Find* tool to locate it.)



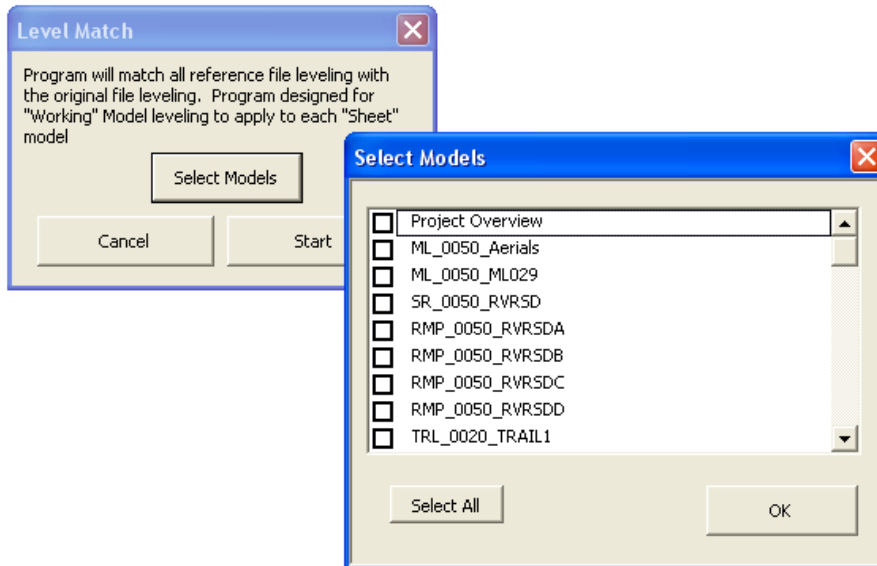
After the leveling is set as desired in the  
active model, (level display ON & OFF), the  
Level Match program will copy the active  
leveling setup to all specified models in the  
file.

If appropriate, the program will display a “wrong file” warning message, as shown below.



When the **OK** button is clicked, (above), the program will continue with the **Level Match** dialog, shown below. When the **Select Models** button is clicked, the **Select Models** dialog will display, as shown below.

Select, (*click*), the appropriate models by checking the “model name” check-boxes, () , and click **OK**.



When the process is complete, the “**Done ...**” dialog will appear, displaying the number of models processed.

