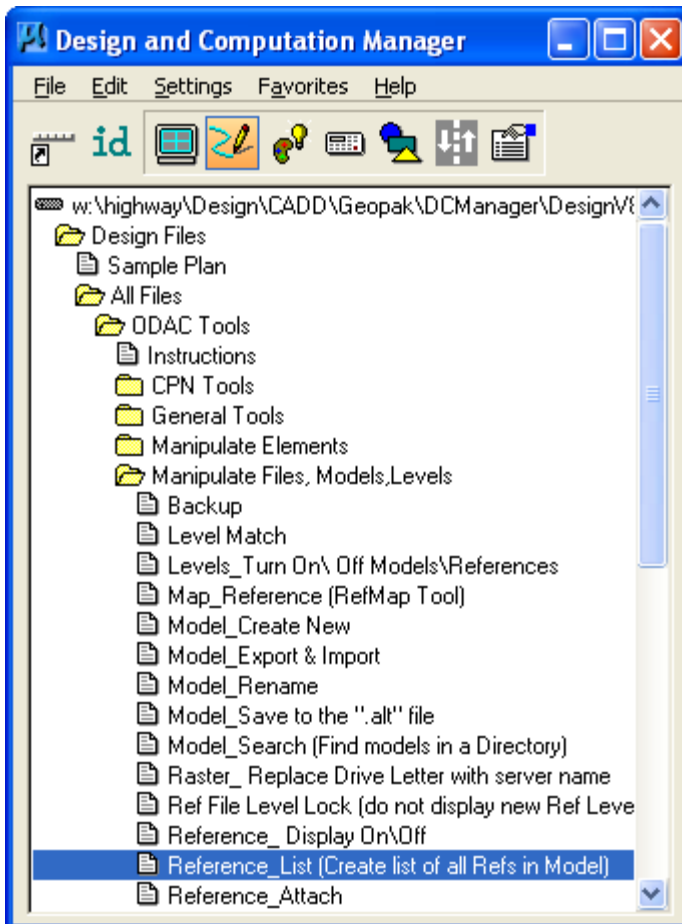




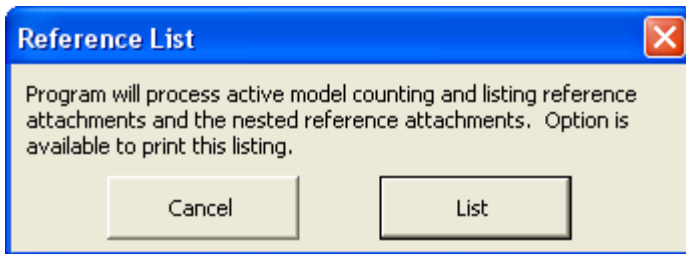
# Reference List

This tool can be accessed from the Geopak: D&C Manager, as shown below:  
(If the item is not found as shown below, use the *D&C > Edit > Find* tool to locate it.)



The **Reference List** command will produce a printable listing of all references and nested reference attachments to the active model.

When the **Reference List** command is *double-clicked*, the following dialog will display.



Clicking the **List** button will produce the following on-screen printable listing.

