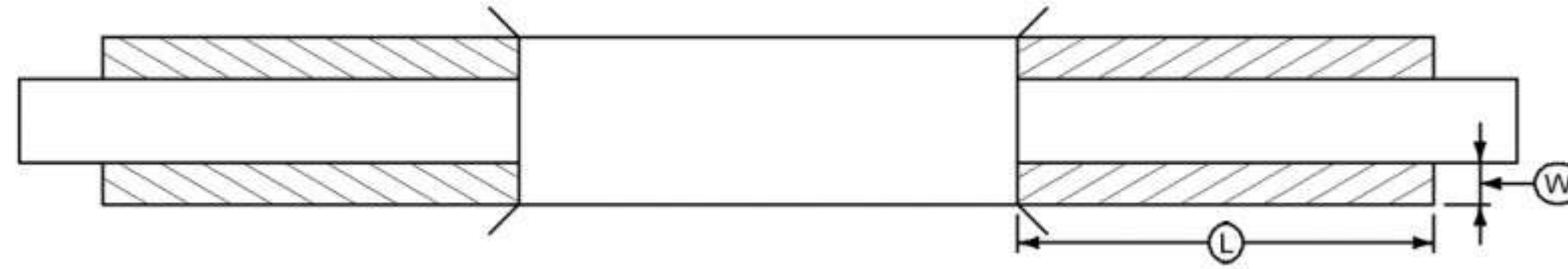


AREAS FOR PAVEMENT OR BASE WIDENING



- (1) Bid Item
- (2) Estimated for two applications to achieve lifts and one application of 0.10 Gal/SY adjacent to existing pavement. Priming of subgrade or finished base is not required.

Line No.	Station From	Station To	Side	Pavement Type	Length (LF)	Width (LF)	Thickness (IN)	HMA Unit Wt. (lbs/cf)	HMA Base Widening (1) (TONS)	HMA Base Widening (1) (SY)	PCC Base Widening (1) (SY)	PCC Pavement Widening (1) (SY)	Tack Coat Unit Wt. (gal/sy)	Tack Coat Lifts (GAL)	Tack Coat Vertical Edge (GAL)	Tack Coat (2) (GAL)	Asphalt Binder (TON)	Class 13 Excavation Widening (1) (CY)	Special Backfill Unit Weight (lbs-cf)	Special Backfill (1) (TONS)	Remarks