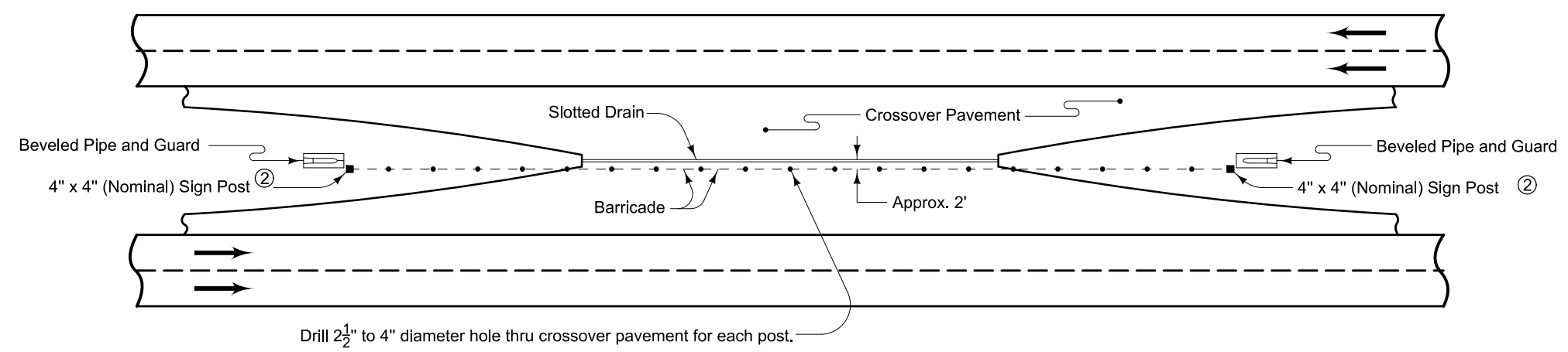
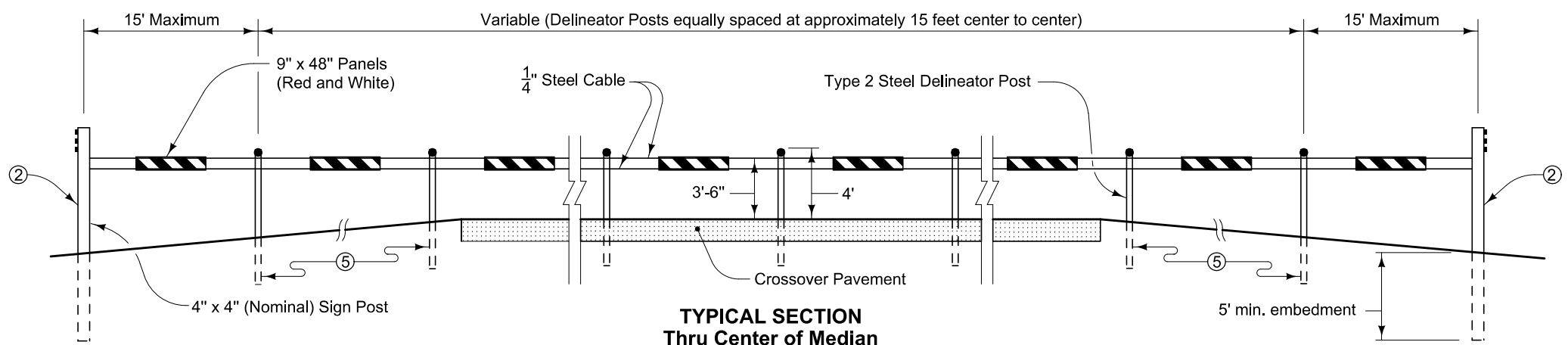


The price bid for "Crossover Barricade", each, is considered full compensation for furnishing all materials and work necessary to construct the barricade as detailed herein.



Drill 2 1/2" to 4" diameter hole thru crossover pavement for each post.

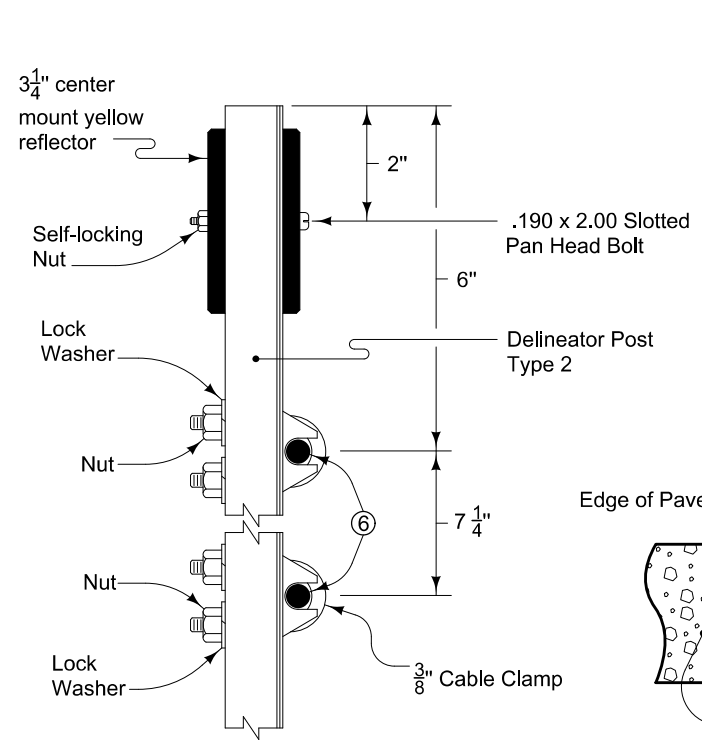
PLAN VIEW



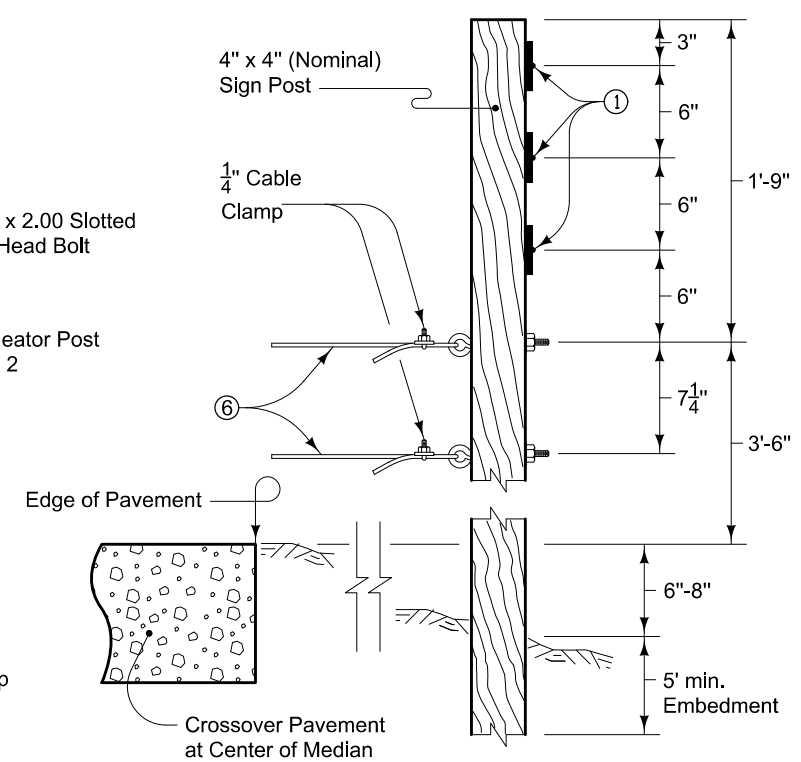
**TYPICAL SECTION
Thru Center of Median**

- ① 3 1/4" center mount yellow reflector, attached to sign post with 0.190 x 1.25 slotted pan head screws.
- ② Extend the barricade to within 2 feet from the top end of the concrete collar.
- ③ 0.125 inch aluminum panel with Type III or IV retroreflective sheeting on both sides.
- ④ ReflectORIZED red stripes on both sides shall slope from upper left to lower right of panel.
- ⑤ Embed all delineator posts a minimum of 2'-6".
- ⑥ 1/4" inch diameter steel cable.

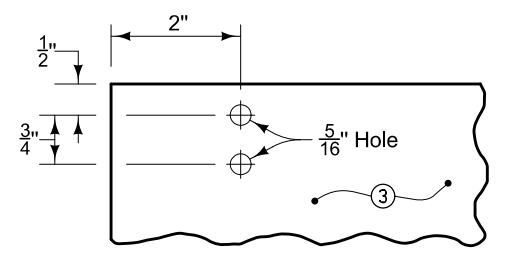
Quantities for Standard Road Plans			Items
PV-500	PV-503	PV-506	
25	19	18	Type 2 Steel Delineator Posts
2	2	2	4" x 4" (Nominal) Sign Post
56	44	42	3 1/4" Yellow Reflectors, center mounted
25	19	18	0.190 x 2.00 slotted pan head bolts and self-locking nuts
6	6	6	0.190 x 1.25 slotted pan head screws
26	20	19	9" x 48" Aluminum panels (red on white)
50	38	36	3/8" Cable clamps, lock washers and nuts
104	80	76	1/4" Cable clamps, neoprene washers and self-locking nuts
4	4	4	3/8" x 6" Eye bolts, washers and nuts
4	4	4	1/4" Cable clamps
820'	640'	610'	Approximate length of 1/4" diameter Steel Cable
405'	315'	300'	Distance from Sign Post to Sign Post based on Note ②



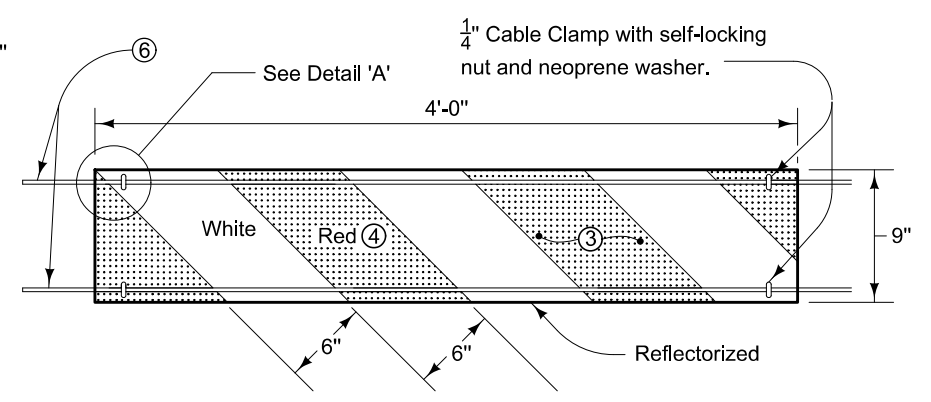
**DELINEATOR POST
ATTACHMENT DETAILS**



SIGN POST ATTACHMENT DETAILS



**TYPICAL HOLE LOCATION
DETAIL 'A'**



PANEL ATTACHMENT DETAILS

 ROAD DESIGN DETAIL	REVISION	
	9	10-19-10
	540-13	
SHEET 1 of 1		
REVISIONS: Changed RV designation to PV.		
DETAILS OF BARRICADE AT CROSSOVER		