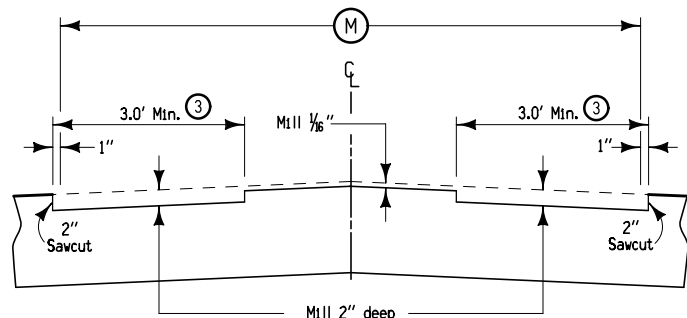
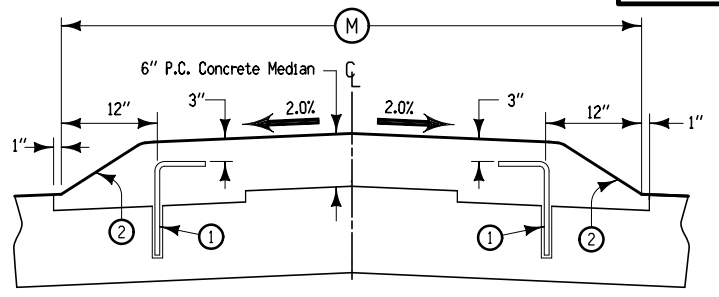


6150  
06-15-93



**Details of Milling**

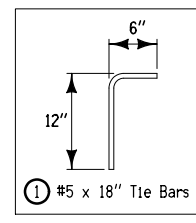
**Notes:**  
 This section may be appropriately modified in areas specifically designated by the Engineer.  
 Use 'C' joints in the doweled median and match the location of all transverse and longitudinal joints to the joints in the existing pavement.  
 Place tie bars at 24" C-C longitudinal spacing between joints in existing pavement. Drill 3/4" holes for tie bars and epoxy to new pavement. See Tabulation 112-5 for additional details. Epoxy material shall be as specified in Materials IM491.11, appendix C.



**Details of Median Placement**

- ② 6" Sloped Curb
- ③ The contractor has the option to mill 2" across the total width of 'M'.

**DOWELED MEDIAN WITH SLOPED CURB**



① #5 x 18" Tie Bars