

PROJECT DESCRIPTION

The Iowa DOT completed an interchange justification study which looked at the existing Hickman Road interchange at US Hwy 6/Hickman Road and the I-35/80 corridor from University Avenue to Douglas Avenue. The study also included a review of Hickman Road between the LifeTime Fitness & Love's entrances, and NW 111th Street.

The study confirmed and concluded the need for a new interchange configuration, as well as additional through lanes on the interstate and on Hickman Road, as the traffic volumes in the corridor are expected to continue to increase by nearly 35% by the year 2024.

For more information related to this project, please visit: www.iowadot.gov/pim



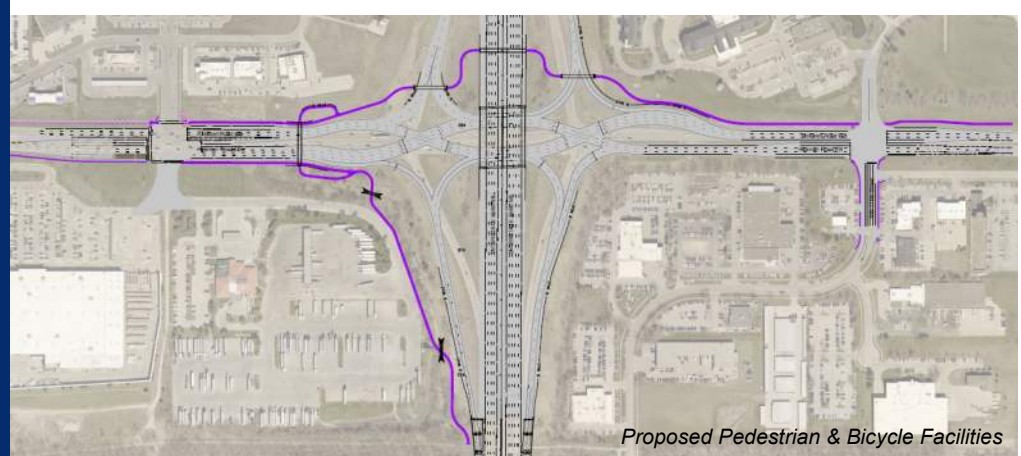
PURPOSE & NEED

The purpose for this project is to reconstruct the existing standard diamond interchange at US Hwy 6/Hickman Road and the I-35/80 to a Diverging Diamond Interchange. This will include widening I-35/80 to include additional through lanes and auxiliary lanes from University Avenue to Douglas Avenue.

The needs within the project corridor include:

- Improving the congestion-related safety performance of the interchange, the Hickman Road corridor, and the I-35/80 corridor;
- Increasing vehicle capacity on the interstate and Hickman Road system, especially during the morning and afternoon peak hours;
- Providing better accessibility across the interstate for pedestrians and bicyclists; and
- Correcting geometric deficiencies to further improve traffic operations.

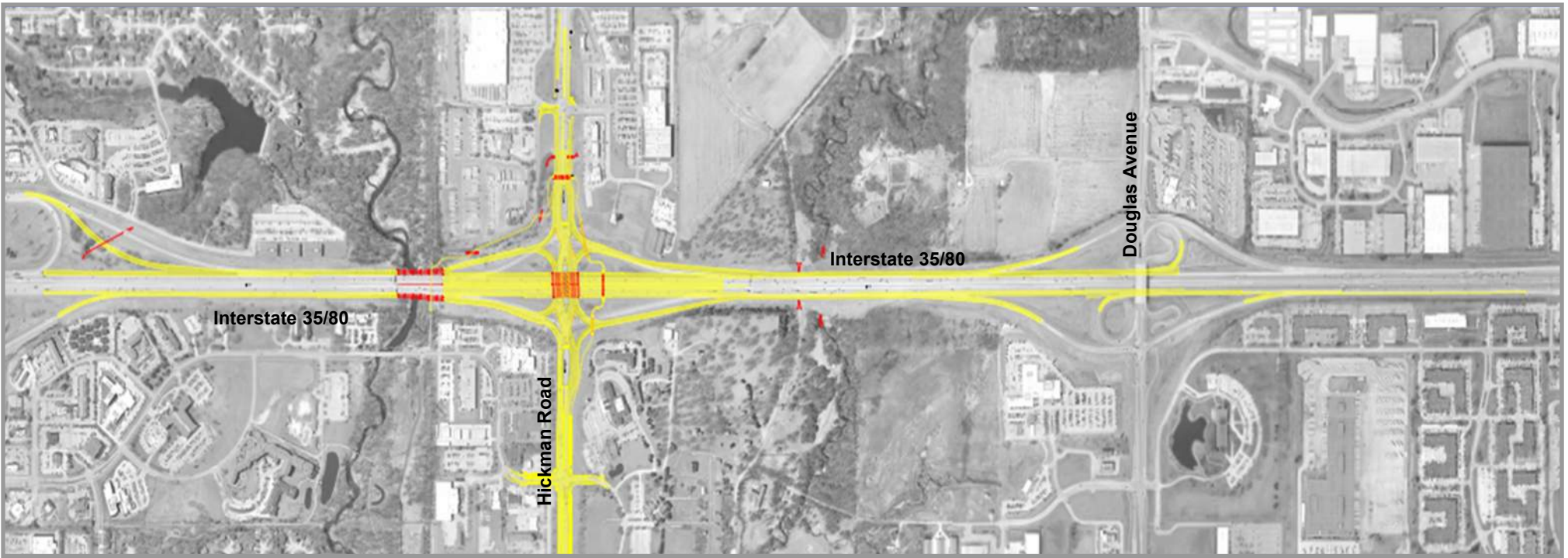
I-35/80 & HICKMAN ROAD INTERCHANGE RECONSTRUCTION PROJECT



PROJECT SCHEDULE

	2024	2025	2026	2027	2028
Right-of-Way Acquisitions	★				
Phase 1 Final Design	■				
Phase 1 Bid Letting	★				
Phase 1 Construction		■	■		
Phase 2 Final Design		■			
Phase 2 Bid Letting		★			
Phase 2 Construction			■	■	
Phase 3 Final Design			■		
Phase 3 Bid Letting				★	
Phase 3 Construction				■	■

★ Current Status



I-35/80 & Hickman Road Interchange Reconstruction Corridor



Proposed Aesthetics & Landscape Elements



Bridge & Retaining Wall Rendering