

## DES MOINES AREA CONSTRUCTION PROJECTS

### I-35 – Ankeny to Huxley

The new bridge on the 315th Street overpass opened to traffic on November 1, 2024.



**The I-35 and IA 210 interchange will be closed beginning Monday, March 17.** All ramps and the bridge will be removed so the new ramps and bridge can be constructed. Traffic will be detoured via U.S. 69 and can access Interstate 35 from U.S. 30 or NE 126th Avenue (Elkhart interchange). The new interchange is anticipated to be open to traffic around December 1, 2025. The contractor has been working on grading and paving the new southbound lanes that will connect from existing I-35 to the new interchange.

The 142nd Street bridge is progressing and is expected to be open to traffic mid-May. Once that bridge is open, the 158th Avenue bridge over I-35 will be removed and construction to replace that will begin. It is expected to be finished in 2026.

Work also continues with paving the new southbound lanes on I-35.

### I-35/80 and U.S. 6/Hickman Road Interchange

There are a couple of long-term closures you should be aware of that will start later this spring. All start dates mentioned below depend on completion of the current work on the retaining walls and Walnut Creek bridge prior to the next stages beginning.

The southbound on-ramp at U.S. 6/Hickman Road and southbound off-ramp at University Avenue will be closed sometime in early to mid-May. The closures are expected to wrap up at the end of July or early August.



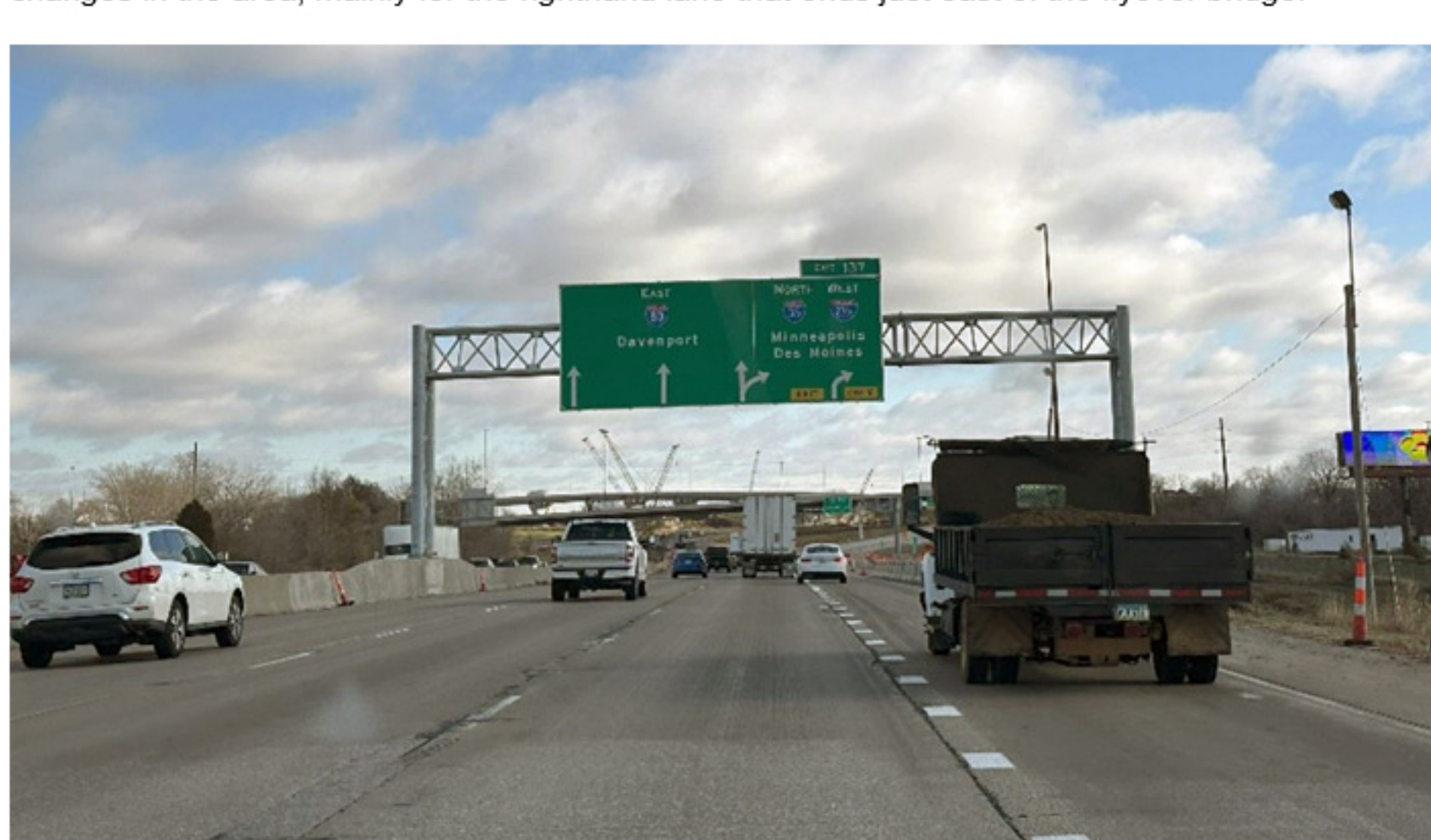
The next stage will overlap with the work noted above and is expected to begin early to mid-June. The northbound I-80/35 Hickman Road ramp and northbound Douglas Avenue off-ramp will be closed. The current plan is to reopen the Douglas Avenue ramp in mid-July and the Hickman ramp will reopen early September.



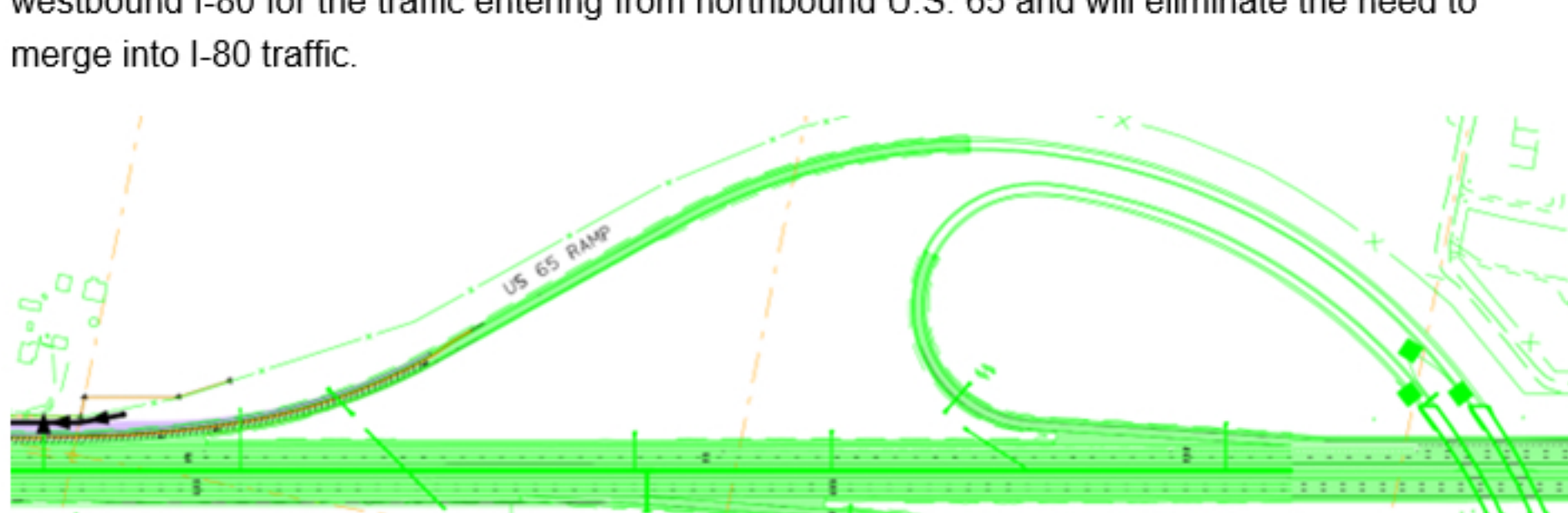
All of these closures are dependent on each stage being completed on time and with the weather being cooperative. You can keep up to date on all detours by following the DSMInterstates Facebook account. Any closures that are anticipated to last more than a week or two can be found on the DSM Interstates website's [Hickman Long Term Detours](#) page.

### I-35/80/235 Interchange – Northeast Mixmaster

The new flyover bridge to northbound I-35 opened on November 21, 2024. We understand there has been some confusion with the I-80 lane changes in the area and are still looking at signage changes in the area, mainly for the righthand lane that ends just east of the flyover bridge.



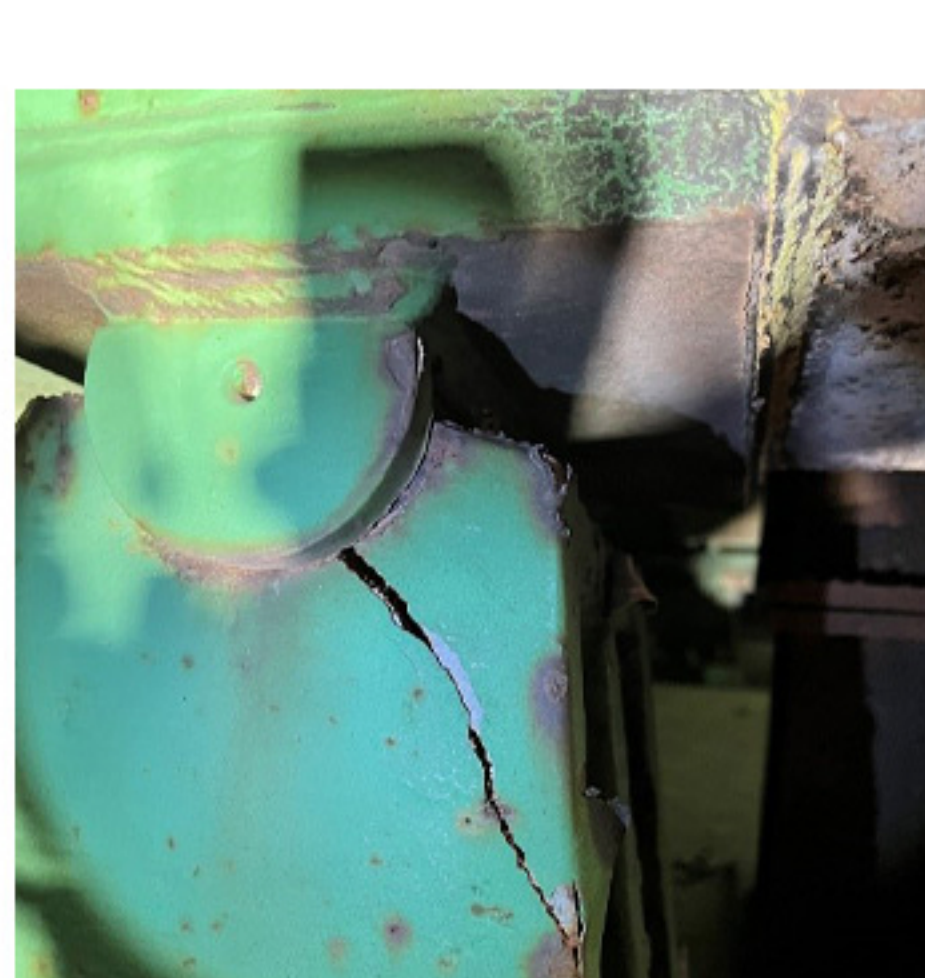
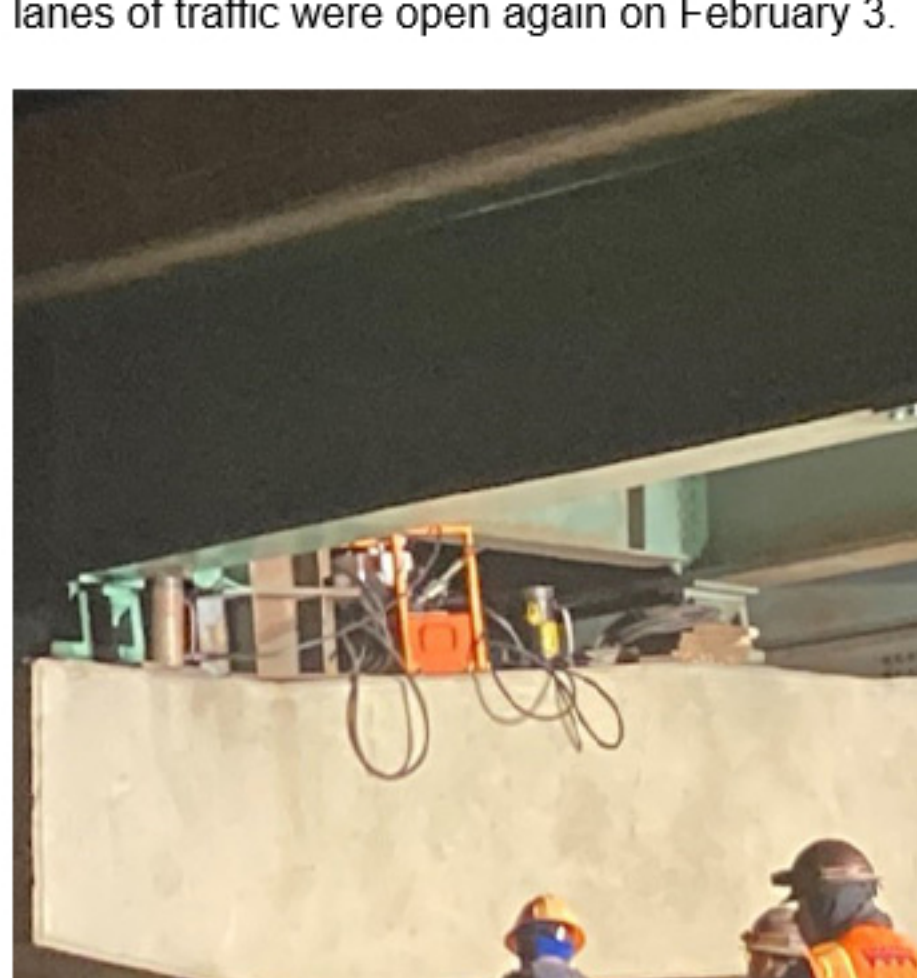
The next phase of the Northeast Mixmaster project will widen I-80 to four lanes in each direction between the Mixmaster and U.S. 65. This includes rehabbing/replacing the bridges at East 38th Street, Four Mile Creek, and East 29th Street. Westbound I-80 traffic will be shifted to the inside lane while construction is completed on the new outside lanes. The westbound travel lanes near the U.S. 65 interchange will go from three lanes east of the interchange down to two lanes and back to three lanes west of the interchange. The new configuration will have a dedicated lane on westbound I-80 for the traffic entering from northbound U.S. 65 and will eliminate the need to merge into I-80 traffic.



No additional impacts to traffic are expected during 2025, other than the removal of the East 38th Street bridge and detour that began in December 2024.

### I-35/80/235 Interchange – Southwest Mixmaster

The bridge over I-235 on the ramp which carries eastbound I-80 traffic to northbound I-35/eastbound I-80 was struck last fall. Although the contractor was able to make most of the repairs shortly after the incident, a specialty piece was damaged. This required one lane of traffic to be closed until that piece could be replaced and the bridge was fully repaired. A custom replacement was fabricated, and that piece arrived at the end of January. It was installed and both lanes of traffic were open again on February 3.



Design work is continuing for the improvements to add new bridges from southbound I-35/westbound I-80 to eastbound I-235 and to westbound I-80. There is a letting in July 2025 for updating the overhead signage, but the majority of this project will begin construction in 2026.