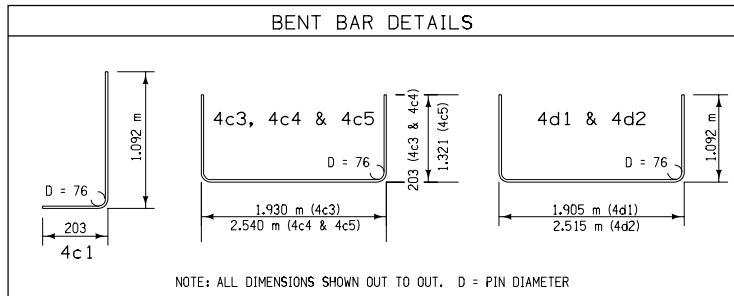


VARIABLE DIMENSIONS AND QUANTITIES

Dimensions						Bar List																		Quantities																					
"H" (m)	A" (mm)	"E" (mm)	"F" (mm)	"G" (mm)	"J" (mm)	4c1		4c2		4c3 (3)			4c4 (3)			4c5 (3)			4d1		4d2		4d3		4d4			Concrete -m ³				Steel (4)													
No.	L(m)	No.	L(m)	L(m)	No. of Spaces "B" "C" "D"	No.	L(m)	No. of Spaces "B" "C" "D"	No.	L(m)	No. of Spaces "B" "C" "D"	No.	L(m)	No. of Spaces "B" "C" "D"	No.	SP(mm)	No.	"K" L(m)	SP(mm)	No.	"M" L(m)	SP(mm)	No.	"N" L(m)	SP(mm)	No.	"P" L(m)	SP(mm)	Base	Lid	Walls	Total	Total kg												
0.914	152	51	51	178	127	24	1.295	---	---	2.337	2	---	---	8	2.947	2	---	---	8	5.182	2	---	---	8	254	9	8	4.09	254	7	6	4.699	254	10	7	2.083	254	8	5	2.692	2.4	2.7	2.5	7.7	810
1.219	152	51	51	178	127	24	1.295	52	1.168	2.337	3	---	---	10	2.947	3	---	---	10	5.182	3	---	---	10	254	9	8	4.09	254	7	6	4.699	254	10	7	2.083	254	8	5	2.692	2.4	2.7	3.4	8.5	989
1.524	152	51	51	178	127	24	1.295	52	1.473	2.337	4	---	---	12	2.947	4	---	---	12	5.182	4	---	---	12	254	9	8	4.09	254	7	6	4.699	254	10	7	2.083	254	8	5	2.692	2.4	2.7	4.2	9.4	1068
1.829	152	51	51	178	127	24	1.295	52	1.778	2.337	5	---	---	14	2.947	5	---	---	14	5.182	5	---	---	14	254	9	8	4.09	254	7	6	4.699	254	10	7	2.083	254	8	5	2.692	2.4	2.7	5.1	10.2	1150
2.134	152	51	51	152	152	24	1.295	52	2.083	2.337	6	---	---	16	2.947	6	---	---	16	5.182	6	---	---	16	203	11	10	4.09	203	8	7	4.699	203	12	9	2.083	203.2	9	6	2.692	2.4	2.7	5.9	11	1273
2.438	229	51	51	152	152	24	1.295	52	2.387	2.337	6	1	---	18	2.947	6	1	---	18	5.182	6	1	---	18	203	11	10	4.09	203	8	7	4.699	203	12	9	2.083	203.2	9	6	2.692	2.4	2.7	6.8	11.9	1353
2.743	305	51	51	152	152	24	1.295	52	2.692	2.337	6	2	---	20	2.947	6	2	---	20	5.182	6	2	---	20	203	11	10	4.09	203	8	7	4.699	203	12	9	2.083	203.2	9	6	2.692	2.4	2.7	7.6	12.7	1434
3.048	152	51	51	152	152	24	1.295	52	2.997	2.337	6	4	---	24	2.947	6	4	---	24	5.182	6	4	---	24	203	11	10	4.09	203	8	7	4.699	203	12	9	2.083	203.2	9	6	2.692	2.4	2.7	8.4	13.6	1562
3.353	229	51	51	152	152	24	1.295	52	3.302	2.337	6	5	---	26	2.947	6	5	---	26	5.182	6	5	---	26	203	11	10	4.09	203	8	7	4.699	203	12	9	2.083	203.2	9	6	2.692	2.4	2.7	9.3	14.4	1641
3.658	305	51	51	152	152	24	1.295	52	3.607	2.337	6	6	---	28	2.947	6	6	---	28	5.182	6	6	---	28	203	11	10	4.09	203	8	7	4.699	203	12	9	2.083	203.2	9	6	2.692	2.4	2.7	10.1	15.3	1722
3.962	152	51	51	152	152	24	1.295	52	3.911	2.337	6	8	---	32	2.947	6	8	---	32	5.182	6	8	---	32	203	11	10	4.09	203	8	7	4.699	203	12	9	2.083	203.2	9	6	2.692	2.4	2.7	11	16.1	1849
4.267	229	0	0	76	76	24	1.295	52	4.216	2.337	6	9	---	34	2.947	6	9	---	34	5.182	6	9	---	34	152	15	14	4.09	152	11	10	4.699	152	16	13	2.083	152.4	15	12	2.692	2.4	2.7	11.8	17	2050
4.572	305	0	0	76	76	24	1.295	52	4.521	2.337	6	10	---	36	2.947	6	10	---	36	5.182	6	10	---	36	152	15	14	4.09	152	11	10	4.699	152	16	13	2.083	152.4	15	12	2.692	2.4	2.7	12.7	17.8	2129
4.877	305	0	0	76	76	24	1.295	52	4.826	2.337	6	10	2	40	2.947	6	10	2	40	5.182	6	10	2	40	152	15	14	4.09	152	11	10	4.699	152	16	13	2.083	152.4	15	12	2.692	2.4	2.7	13.5	18.6	2256
5.182	305	0	0	76	76	24	1.295	52	5.131	2.337	6	10	4	44	2.947	6	10	4	44	5.182	6	10	4	44	152	15	14	4.09	152	11	10	4.699	152	16	13	2.083	152.4	15	12	2.692	2.4	2.7	14.4	19.5	2363
5.486	305	0	0	76	76	24	1.295	52	5.435	2.337	6	10	6	48	2.947	6	10	6	48	5.182	6	10	6	48	152	15	14	4.09	152	11	10	4.699	152	16	13	2.083	152.4	15	12	2.692	2.4	2.7	15.2	20.3	2509
5.791	305	0	0	76	76	24	1.295	52	5.74	2.337	6	10	8	52	2.947	6	10	8	52	5.182	6	10	8	52	152	15	14	4.09	152	11	10	4.699	152	16	13	2.083	152.4	15	12	2.692	2.4	2.7	16.0	21.2	2636
6.096	305	0	0	76	76	24	1.295	52	6.045	2.337	6	10	10	56	2.947	6	10	10	56	5.182	6	10	10	56	152	15	14	4.09	152	11	10	4.699	152	16	13	2.083	152.4	15	12	2.692	2.4	2.7	16.9	22.0	2763
6.401	305	0	0	76	76	24	1.295	52	6.35	2.337	6	10	12	60	2.947	6	10	12	60	5.182	6	10	12	60	152	15	14	4.09	152	11	10	4.699	152	16	13	2.083	152.4	15	12	2.692	2.4	2.7	17.7	22.9	2888
6.706	305	0	0	76	76	24	1.295	52	6.655	2.337	6	10	14	64	2.947	6	10	14	64	5.182	6	10	14	64	152	15	14	4.09	152	11	10	4.699	152	16	13	2.083	152.4	15	12	2.692	2.4	2.7	18.6	23.7	3015
7.01	305	0	0	76	76	24	1.295	52	6.959	2.337	6	10	16	68	2.947	6	10	16	68	5.182	6	10	16	68	152	15	14	4.09	152	11	10	4.699	152	16	13	2.083	152.4	15	12	2.692	2.4	2.7	19.4	24.6	3141
7.315	305	0	0	76	76	24	1.295	52	7.264	2.337	6	10	18	72	2.947	6	10	18	72	5.182	6	10	18	72	152	15	14	4.09	152	11	10	4.699	152	16	13	2.083	152.4	15	12	2.692	2.4	2.7	20.3	25.4	3269
7.62	305	0	0	76	76	24	1.295	52	7.569	2.337	6	10	20	76	2.947	6	10	20	76	5.182	6	10	20	76	152	15	14	4.09	152	10	10	4.699	152	16	13	2.083	152.4	15	12	2.692	2.4	2.7	21.1	26.3	3395
7.925	305	0	0	76	76	24	1.295	52	7.874	2.337	6	10	22	80	2.947	6	10	22	80	5.182	6	10	22	80	152	15	14	4.09	152	10	10	4.699	152	16	13	2.083	152.4	15	12	2.692	2.4	2.7	22	27.1	3521
8.23	305	0	0	76	76	24	1.295	52	8.179	2.337	6	10	24	84	2.947	6	10	24	84	5.182	6	10	24	84	152	15	14	4.09	152	10	10	4.699	152	16	13	2.083	152.4	15	12	2.692	2.4	2.7	22.8	27.9	3647
8.534	305	0	0	76	76.2	24	1.295	52	8.483	2.337	6	10	26	88	2.947	6	10	26	88	5.182	6	10	26	88	152	15	14	4.09	152	10	10	4.699	152	16	13	2.083	152.4	15	12	2.692	2.4	2.7	23.7	28.8	3774

The clear distance from face of concrete to near edge or end of reinforcing bar to be 50 unless otherwise noted.



- ① H = Wall height = form grade elevation (minus) bottom well elevation (minus) 406 mm, rounded up.
- ② A = First bar spacing at top of wall. Minimum spacing = 75 mm. Maximum spacing = 300 mm. Adjust as necessary.
- ③ See Section A-A on Standard Road Plan RA-81(2) for spacing of 4c3, 4c4 and 4c5.
- ④ Quantity includes 142 kg for lid.

All dimensions given in millimeters unless noted.

METRIC VERSION	M		Iowa Department of Transportation Highway Division
	STANDARD ROAD PLAN RA-47A(4)		REVISION NO. NEW
	<i>Deanna Marfeld</i> APPROVED BY DESIGN METHODS ENGINEER		REVISION DATE 04-18-06
	TRIPLE GRATE BARRIER INTAKE (Sheet 4 of 4)		